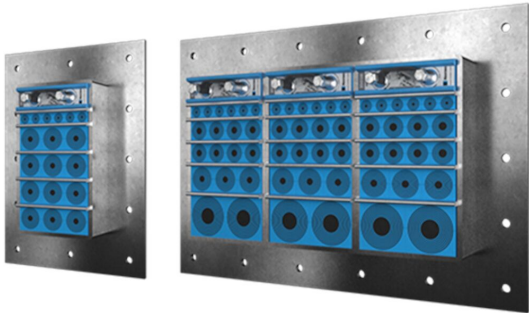




Roxtec GHM 穿隔系统

用于高电缆密度和大电缆的穿隔系统。

Roxtec GHM 是一种轻型电缆引入密封系统通过栓接安装于包括用于密封结构的密封条。其穿隔框架可提供采用不同材料制成的型号于可用于单开孔或多种组合开孔。其密封模块可适配各种规格的电缆和管道于并可在穿隔系统内提供备用容量。



- 防啮齿动物
- 节省空间

产品特性



耐火



水密



IP/UL NEMA



气密

安装结构



夹芯板



箱柜和机柜



金属

安装类型



栓接

等级和证书

火灾

- A 级符合 IMO 2010 FTP 规范
- E/EI 等级符合 EN 13501

密封性

- 气体: 1 bar 洪水
- 水: 2 bar 洪水
- 符合 IEC 60529 标准 IP 66/67 防护等级

框架尺寸

mm/kg

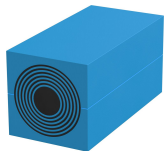
下方的不同框架只是部分选择。要了解全部的框架和配置请访问 [roxtec.com](https://www.roxtec.com)。

标题	框架开口	密封空间	外部尺寸 WxHxD	开孔尺寸 w x h	重量	产品编号
GHM 6x1 GALV INCL TSL 15x6	1	120 x 180	252.5 x 350 x 60	147.5(+5/-5) x 245(+5/-5)	4.5	5GHM000004089
GHM 6x2 GALV INCL TSL 15x6	2	120 x 180	383 x 350 x 60	278(+5/-5) x 245(+5/-5)	7.7	5GHM000006300
GHM 6x3 GALV INCL TSL 15x6	3	120 x 180	513.5 x 350 x 60	408.5(+5/-5) x 245(+5/-5)	10.5	5GHM000004091
GHM 6x1 PRIMED INCL TSL 15x6	1	120 x 180	252.5 x 350 x 60	147.5(+5/-5) x 245(+5/-5)	4.9	GHM6000000112
GHM 6x2 PRIMED INCL TSL 15x6	2	120 x 180	383 x 350 x 60	278(+5/-5) x 245(+5/-5)	7.4	GHM6000000212
GHM 6x3 PRIMED INCL TSL 15x6	3	120 x 180	513.5 x 350 x 60	408.5(+5/-5) x 245(+5/-5)	9.9	GHM6000000312
GHM 6x1 AISI316 INCL TSL 15x6	1	120 x 180	252.5 x 350 x 60	147.5(+5/-5) x 245(+5/-5)	4.9	5GHM000004746
GHM 6x2 AISI316 INCL TSL 15x6	2	120 x 180	383 x 350 x 60	278(-2) x 245	7.4	5GHM000004027
GHM 6x3 AISI 316 INCL TSL 15x6	3	120 x 180	513.5 x 350 x 60	408.5(+5/-5) x 245(+5/-5)	9.9	5GHM000004044

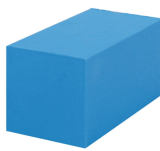


密封组件数据

密封组件



Multidiameter™ 多径 RM 模块



RM 盲堵模块



密封套件



隔层板



润滑脂



支架工具



楔形压紧件和楔形压紧套件

如需了解详细信息请访问 [roxtec.com](https://www.roxtec.com)。

The product information provided by Roxtec does not release the purchaser of the Roxtec system, or part thereof, from the obligation to independently determine the suitability of the products for the intended process, installation and/or use. Roxtec gives no guarantee for the Roxtec system or any part thereof and assumes no liability for any loss or damage whatsoever, whether direct, indirect, consequential, loss of profit or otherwise, occurred or caused by the Roxtec systems or installations containing components not manufactured by an authorized manufacturer and/or occurred or caused by the use of the Roxtec system in a manner or for an application other than for which the Roxtec system was designed or intended. Roxtec expressly excludes any implied warranties of merchantability and fitness for a particular purpose and all other express or implied representations and warranties provided by statute or common law. User determines suitability of the Roxtec system for intended use and assumes all risk and liability in connection therewith. In no event shall Roxtec be liable for indirect, consequential, punitive, special, exemplary or incidental damages or losses. The Roxtec products are offered and sold in accordance with the conditions of the Roxtec General Terms of Sales. The latest version of the Roxtec General Terms of Sales can be downloaded from <https://www.roxtec.com/en/about-us/about-roxtec/general-terms-of-sales/>. We reserve the right to make changes to the product and technical information without further notice. Any errors in print or entry are no claims for indemnity. The content of this publication is the property of Roxtec International AB and is protected by copyright. This document was generated on: 2025-07-03