



Moldura Roxtec CF 8/32

Solução de alta densidade de cabo com moldura de alumínio.

As vedações de passagem de cabo Roxtec CF 8 e CF 32 possuem molduras de alumínio fundido e módulos de vedação que são adaptáveis para uma variedade de tamanhos de cabo.



- Resistente a roedores
- Leve
- Eficiente em área
- Permite cabos pré-terminados

Características do produto



IP/UL NEMA

Estrutura da instalação



Gabinetes e invólucros

Classificações e certificados

Proteção contra vazamento

- IP 66/67, UL/NEMA 4,4X,12,13

Dimensões da moldura

mm/kg

As variantes de molduras abaixo são uma seleção limitada. Para a gama completa de molduras e configurações, acesse [roxtec.com](https://www.roxtec.com).

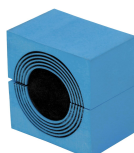
Título	Aberturas da moldura	Espaço de montagem	Dimensões externas WxHxD	Dimensões da abertura w x h	Peso	Art. No.
CF 8	1	40 x 80	75 x 140 x 60	61(+0.5/-0.5) x 127(+0.5/-0.5)	0.6	CSF0000080035
CF 32	2	40 x 160	130 x 230 x 60	110(+0.5/-0.5) x 216(+0.5/-0.5)	1.4	CSF0000320035

Dados de componente de vedação

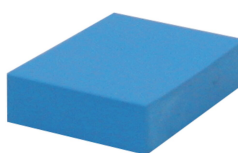
Componentes de vedação



Lubrificante Roxtec



Módulo CM com Multiâmetro™



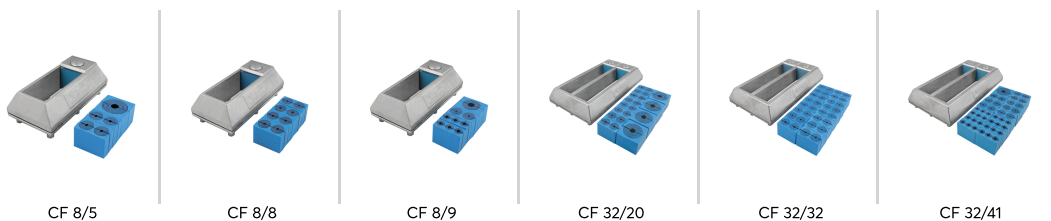
Módulo de compensação sólida CM

Para obter informações detalhadas, acesse [roxtec.com](https://www.roxtec.com).



Kits de passagem pré-configurada

mm/kg



Título	Configuração	Dimensões externas WxHxD	Dimensões da abertura w x h	Peso	Art. No.
CF 8/5	1x (9.5-32.5), 4x (3.5-16.5)	75 x 140 x 59	61(+0.5/-0.5) x 127(+0.5/-0.5)	0.8	CKT8000000005
CF 8/8	8x (3.5-16.5)	75 x 140 x 59	61(+0.5/-0.5) x 127(+0.5/-0.5)	0.8	CKT8000000008
CF 8/9	2x (3.5-16.5), 1x (10.0-25.0), 6x (3.5-10.5)	75 x 140 x 59	61(+0.5/-0.5) x 127(+0.5/-0.5)	0.8	CKT0000000009
CF 32/20	4x (9.5-32.5), 16x (3.5-16.5)	130 x 230 x 59	110(+0.5/-0.5) x 216(+0.5/-0.5)	2	CKT3200000020
CF 32/32	32x (3.5-16.5)	130 x 230 x 59	110(+0.5/-0.5) x 216(+0.5/-0.5)	2	CKT3200000032
CF 32/41	1x (9.5-32.5), 24x (3.5-10.5), 16x (3.5-16.5)	130 x 230 x 59	110(+0.5/-0.5) x 216(+0.5/-0.5)	2	CKT3200000041

The product information provided by Roxtec does not release the purchaser of the Roxtec system, or part thereof, from the obligation to independently determine the suitability of the products for the intended process, installation and/or use.

Roxtec gives no guarantee for the Roxtec system or any part thereof and assumes no liability for any loss or damage whatsoever, whether direct, indirect, consequential, loss of profit or otherwise, occurred or caused by the Roxtec systems or installations containing components not manufactured by an authorized manufacturer and/or occurred or caused by the use of the Roxtec system in a manner or for an application other than for which the Roxtec system was designed or intended.

Roxtec expressly excludes any implied warranties of merchantability and fitness for a particular purpose and all other express or implied representations and warranties provided by statute or common law. User determines suitability of the Roxtec system for intended use and assumes all risk and liability in connection therewith. In no event shall Roxtec be liable for indirect, consequential, punitive, special, exemplary or incidental damages or losses.

The Roxtec products are offered and sold in accordance with the conditions of the Roxtec General Terms of Sales. The latest version of the Roxtec General Terms of Sales can be downloaded from <https://www.roxtec.com/en/about-us/about-roxtec/general-terms-of-sales/>

We reserve the right to make changes to the product and technical information without further notice. Any errors in print or entry are no claims for indemnity. The content of this publication is the property of Roxtec International AB and is protected by copyright.

This document was generated on: 2025-01-14