

烙克赛克保留所有权利。未经授权严禁复制，使用以及向第三方泄漏。

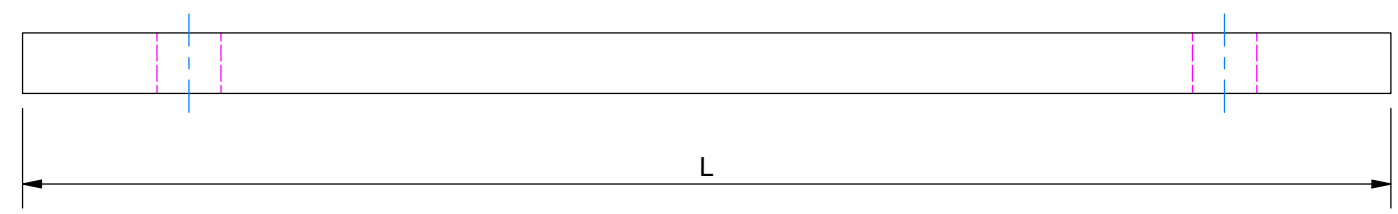
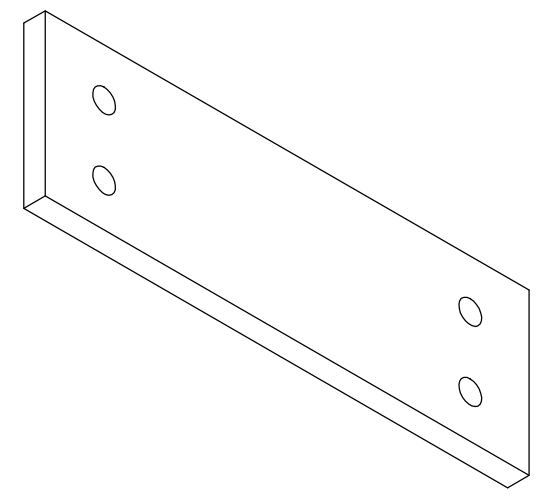
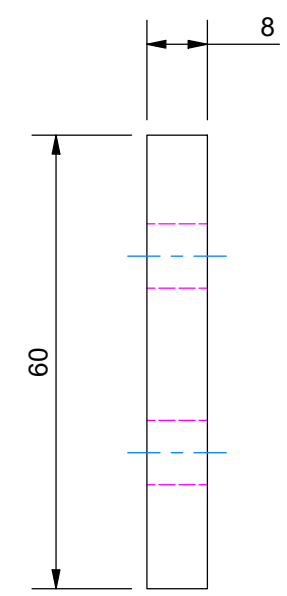
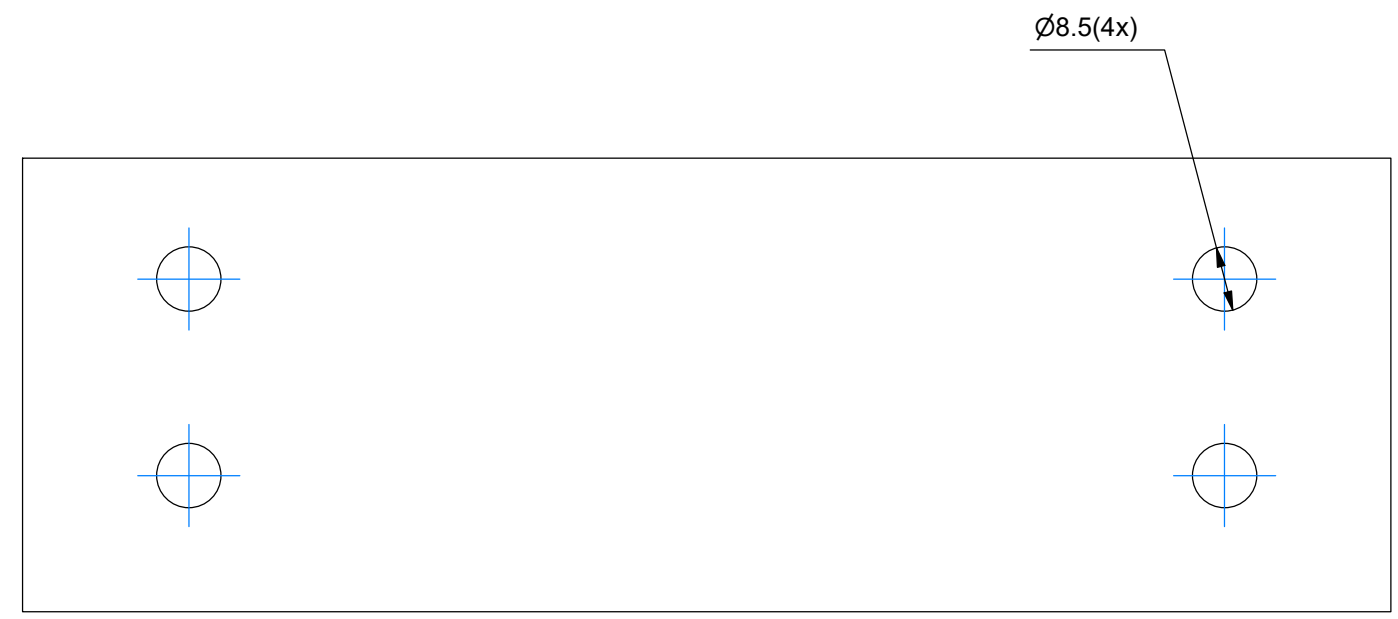
All rights reserved. Unauthorized reproduction, use or disclosure to third parties is strictly forbidden.

Rev 3.0


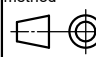
PART	L
PARTITION WALL 2	181
PARTITION WALL 4	239.5
PARTITION WALL 6	298
PARTITION WALL 8	358

MATERIAL MILD STEEL  
HOT DIPPED GALVANIZED ACC, TO ISO 1461

MATERIAL STAINLESS STEEL



A		2023-05-17	se-parham
Rev	Type of revision	Date	Sign

General tolerances used for manufacturing shown in document DOC-002180		Designed by/date se-parham 2023-05-17	Latest save date 2023-05-23	Format A3	Scale	Sheet no 1 / 1	TotWeight 0,7 kg
 <b>Roxtec</b> www.roxtec.com		Title B FRAME PARTITION WALL			Projection method 		Rev A
		Restricted due to Information drawing		Drawing number S1591975			

Information drawings show general design and nominal dimensions if not else stated