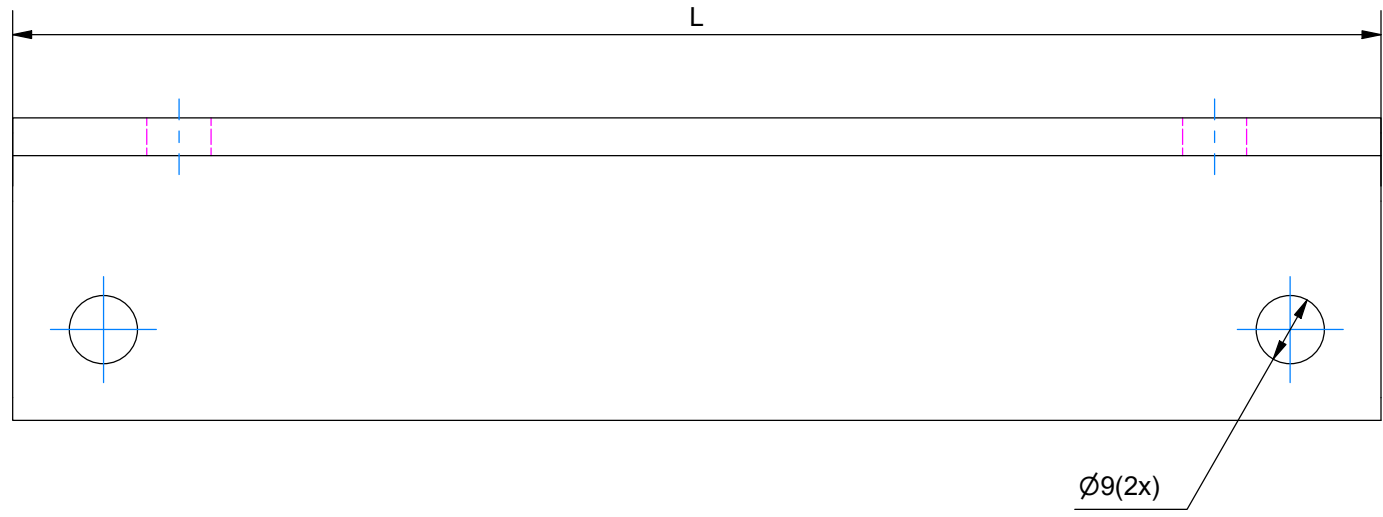
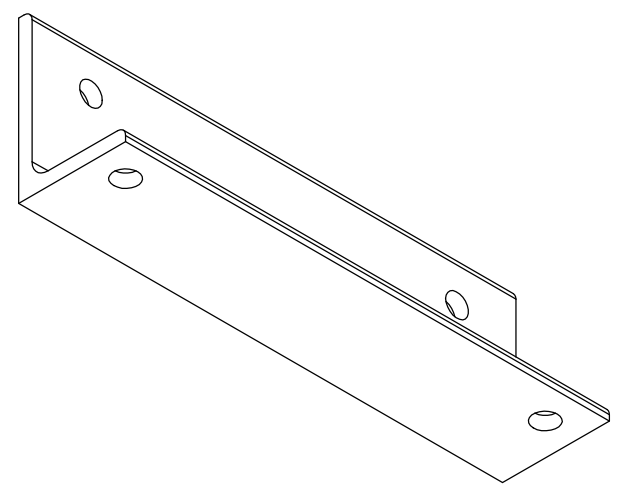
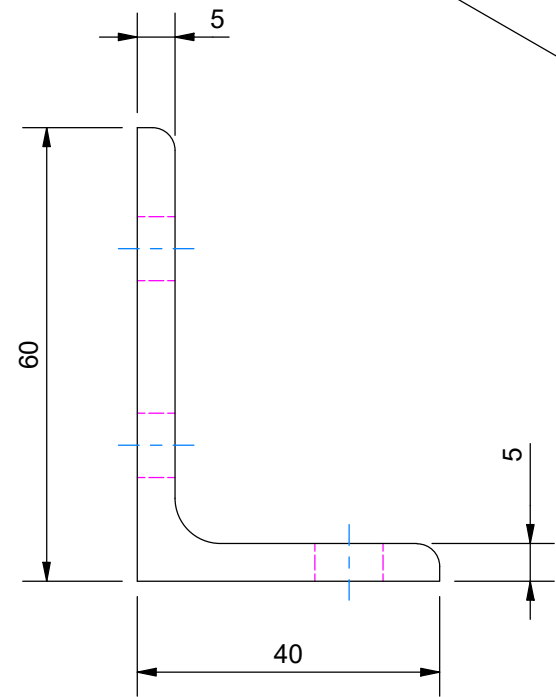
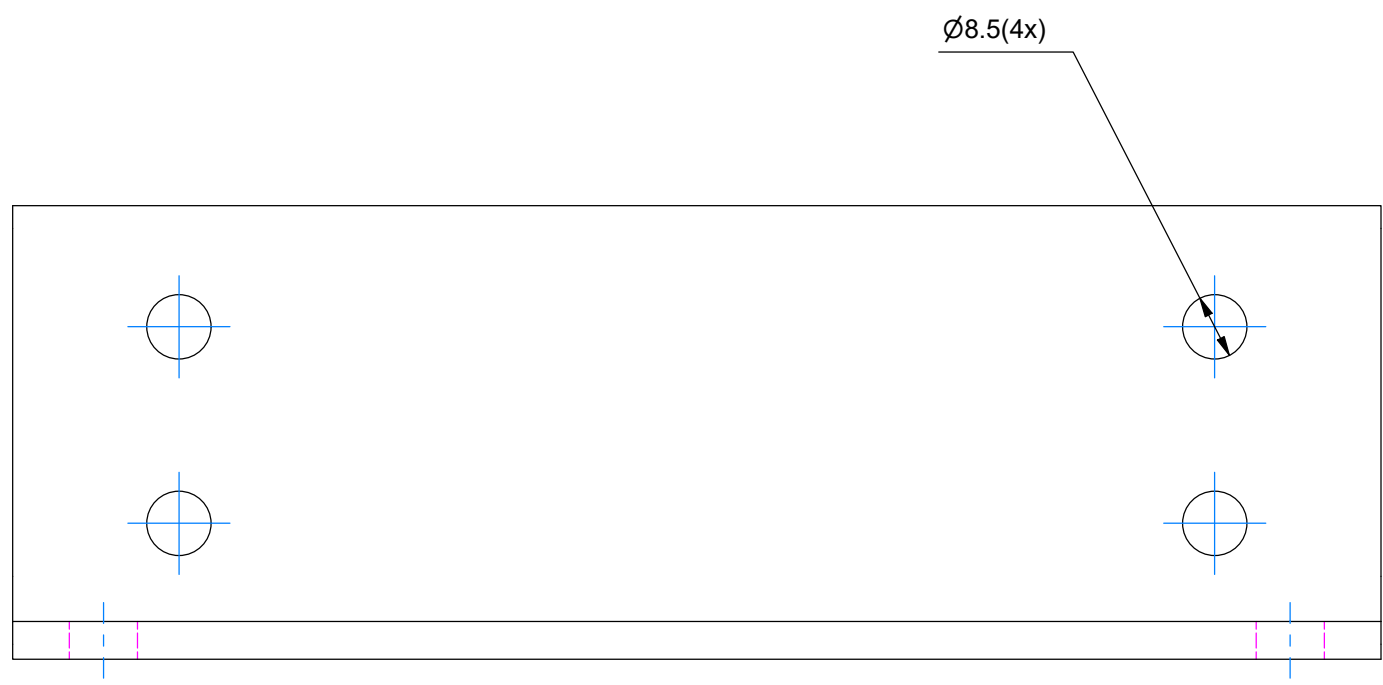


烙克赛克保留所有权利。未经授权严禁复制，使用以及向第三方泄漏。


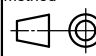
Rev 3.0 All rights reserved. Unauthorized reproduction, use or disclosure to third parties is strictly forbidden.

PART	L
LONG SIDE 2	181
LONG SIDE 4	239.5
LONG SIDE 6	298
LONG SIDE 8	358

MATERIAL MILD STEEL
HOT DIPPED GALVANIZED ACC, TO ISO 1461
MATERIAL STAINLESS STEEL



A		2023-05-16	se-parham
Rev	Type of revision	Date	Sign

General tolerances used for manufacturing shown in document DOC-002180		Designed by/date se-parham 2023-05-16	Latest save date 2023-05-23	Format A3	Scale	Sheet no 1 / 1	TotWeight 0.7 kg
 www.roxtec.com		Title B FRAME LONG SIDE			Projection method 		Rev A
		Restricted due to Information drawing		Drawing number S1591943			

Information drawings show general design and nominal dimensions if not else stated