

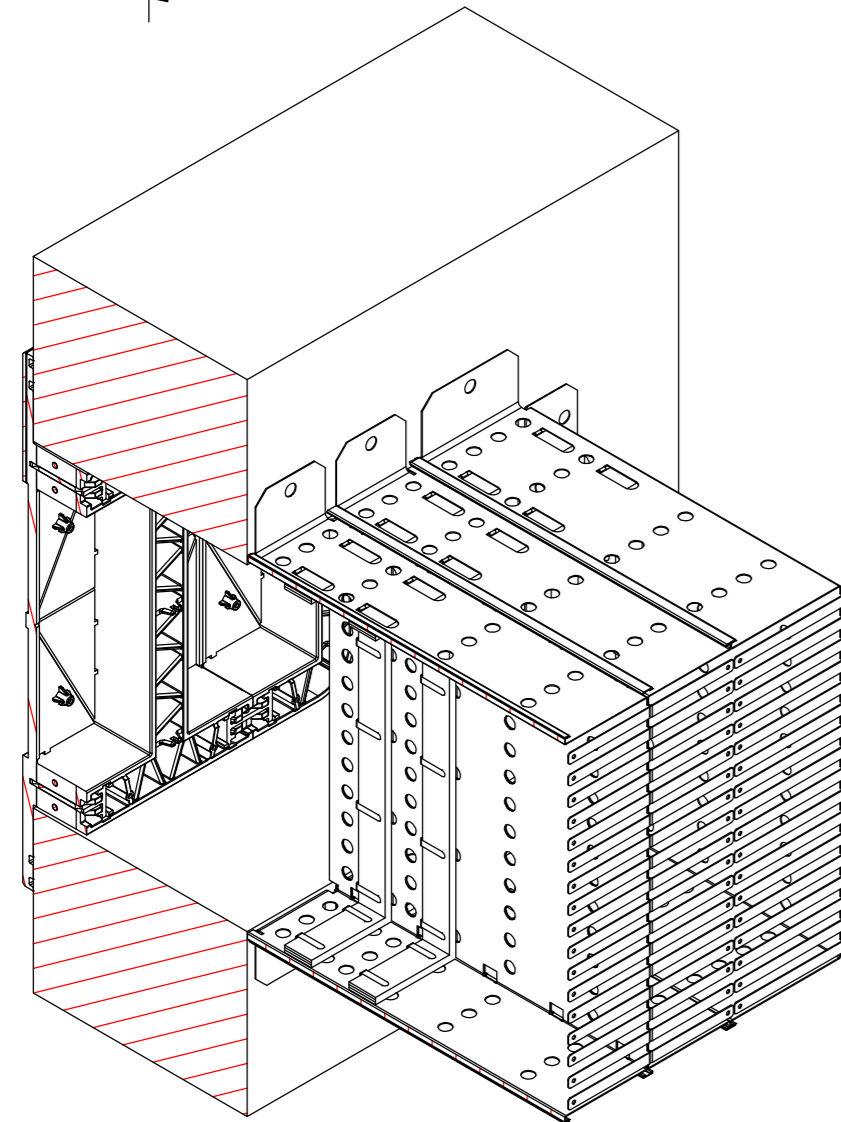
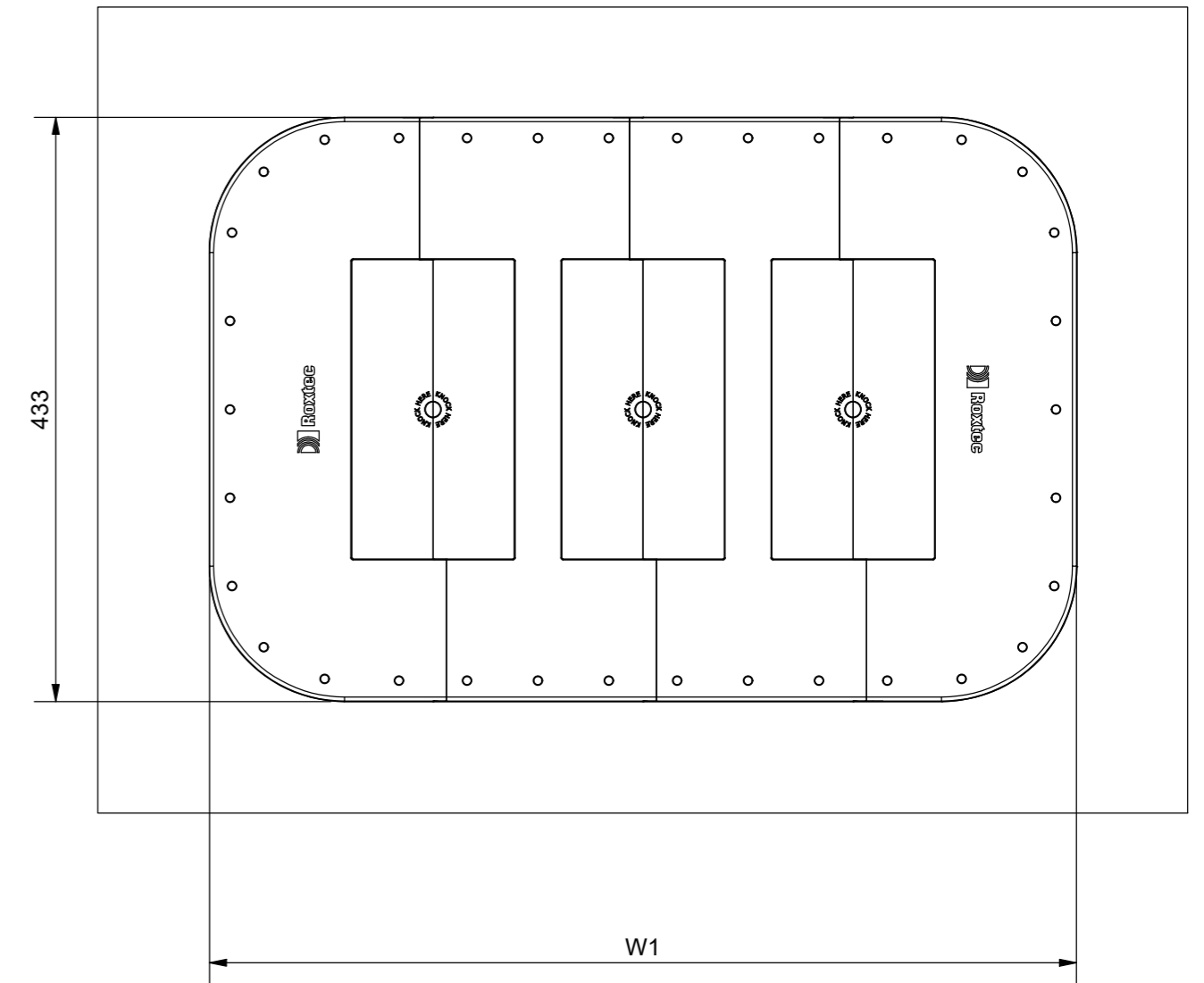
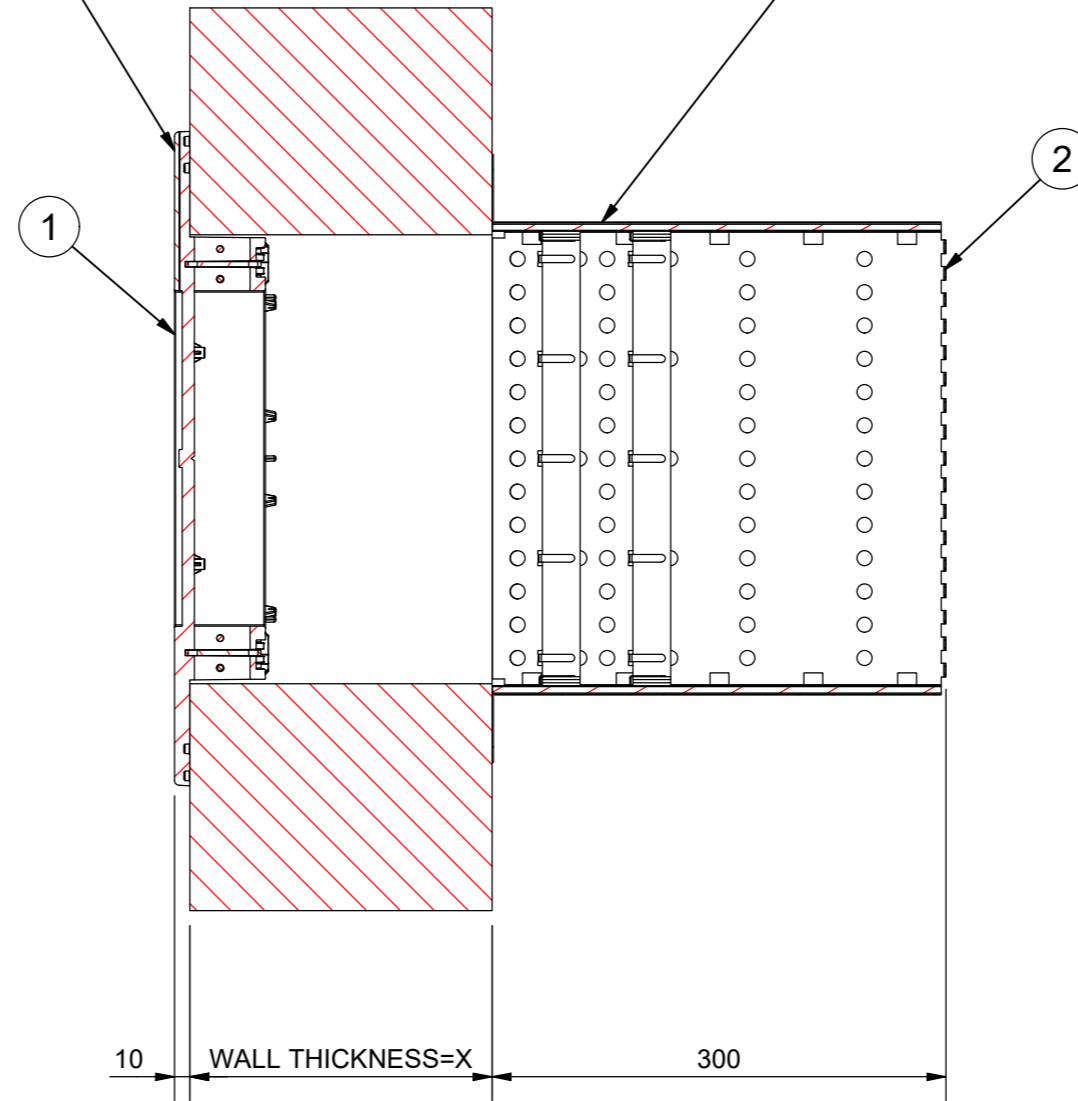
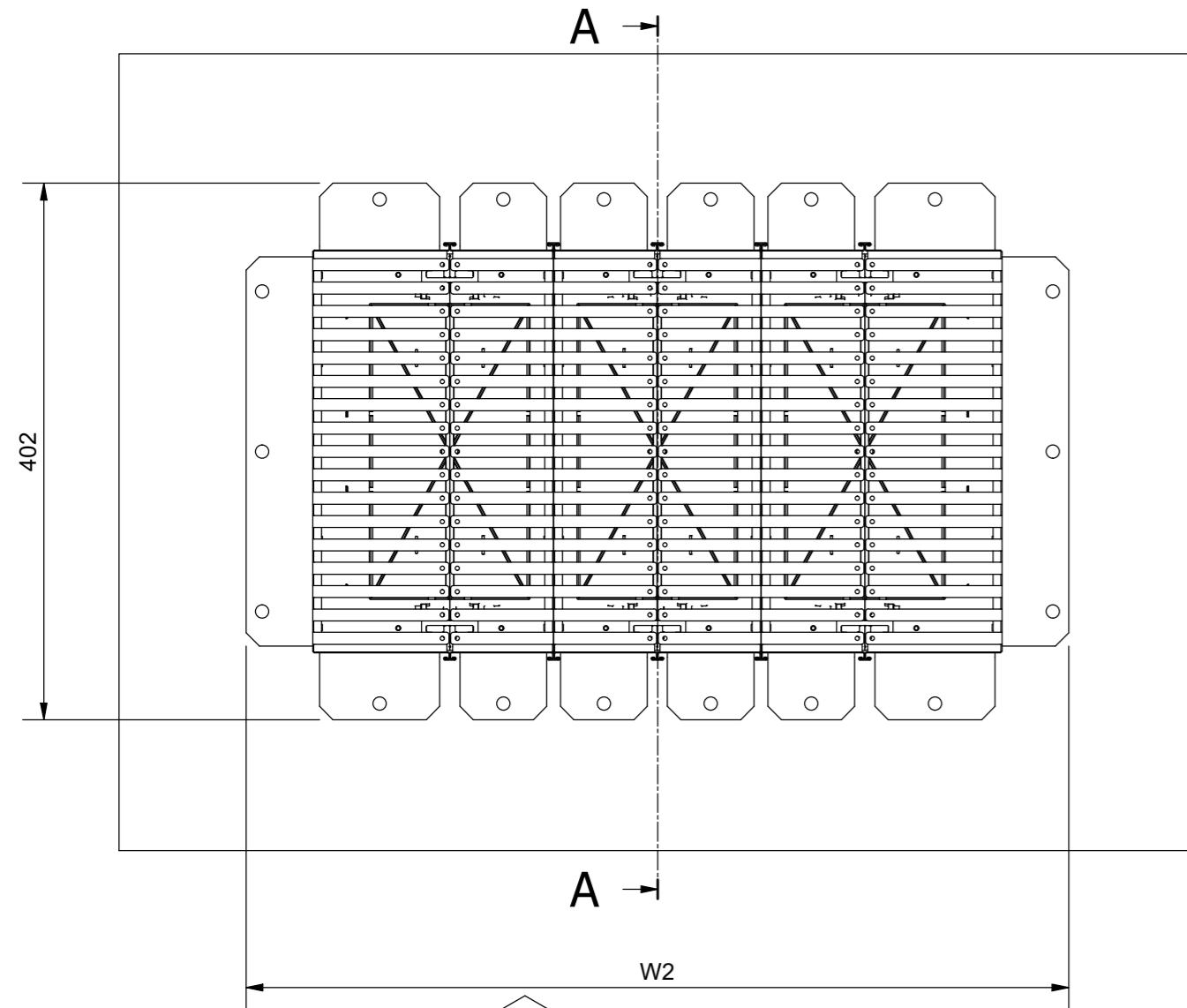
Frame Size	Ext Frame size	ART NR	W1	W2
FLAMEPLUS 6X1	FLAMEPLUS EXT FRAME 6X1	223805	331	306
FLAMEPLUS 6X2	FLAMEPLUS EXT FRAME 6X2	223806	487	461
FLAMEPLUS 6X3	FLAMEPLUS EXT FRAME 6X3	223807	642	616

Installation example: FlamePlus 6x3

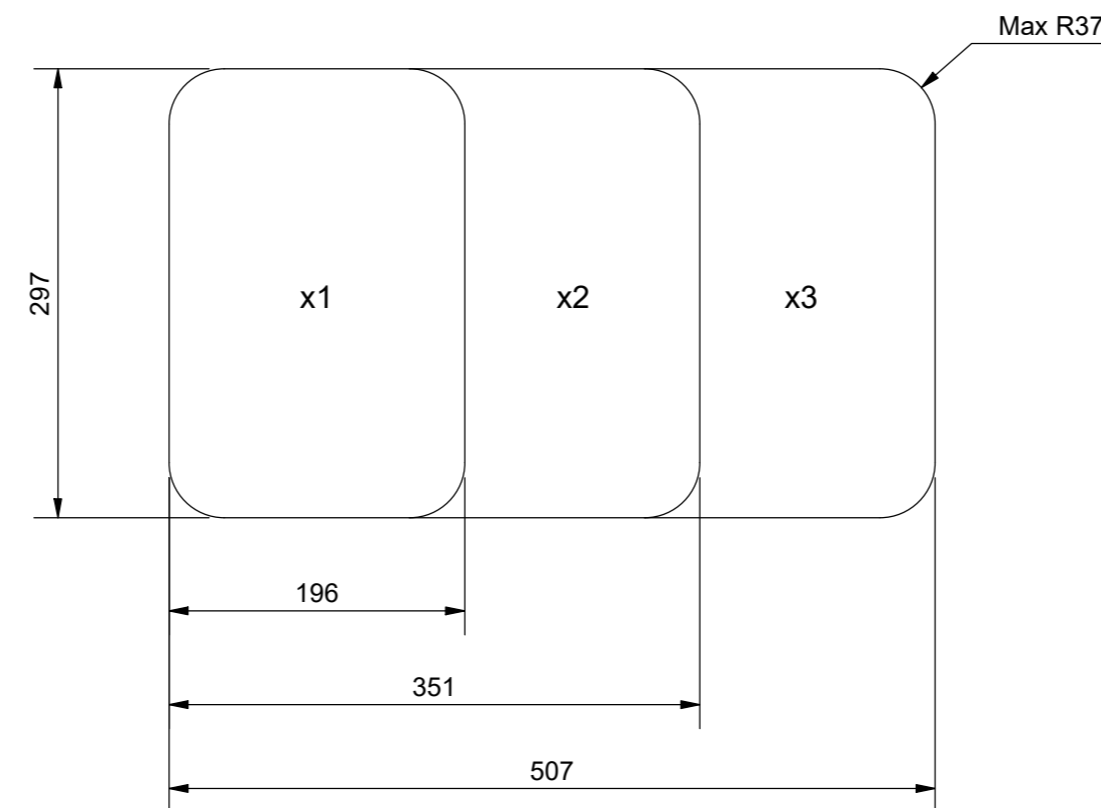
Frame side

A-A (1:5)

Extension frame mounted opposite side of frame.



Aperture dimension
(Tolerance all dims. +5)



2	-	FLAMEPLUS EXT. FRAME 6X1-6X2-6X3	S1582459, S1582504, S1582505						
1	-	FLAMEPLUS FRAME 6X1-6X2-6X3	S1570419, S1577979, S1570405						
ITEM	QTY	Designation	Specification				Weight		
General tolerances used for manufacturing shown in document DDC-002180		Designed by/date se-andrek 2022-10-19	Latest save date 2022-10-20	Format A2	Scale	Sheet no 1 / 1	TotWeight		
www.roxtec.com		Title FLAMEPLUS WITH EXT. FRAME		Restricted due to Information drawing		Drawing number S1584743	Rev A		

Information drawings show general design and nominal dimensions if not else stated

Rev	Type of revision	Date	Sign
A		2022-10-19	se-andrek