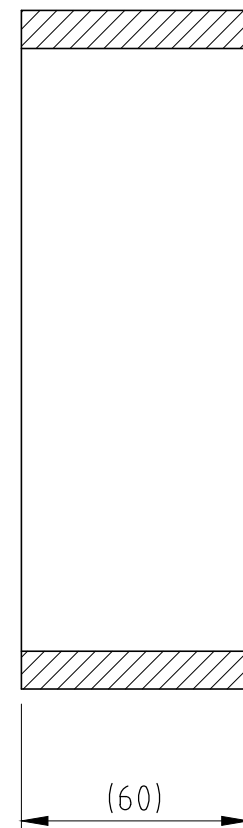
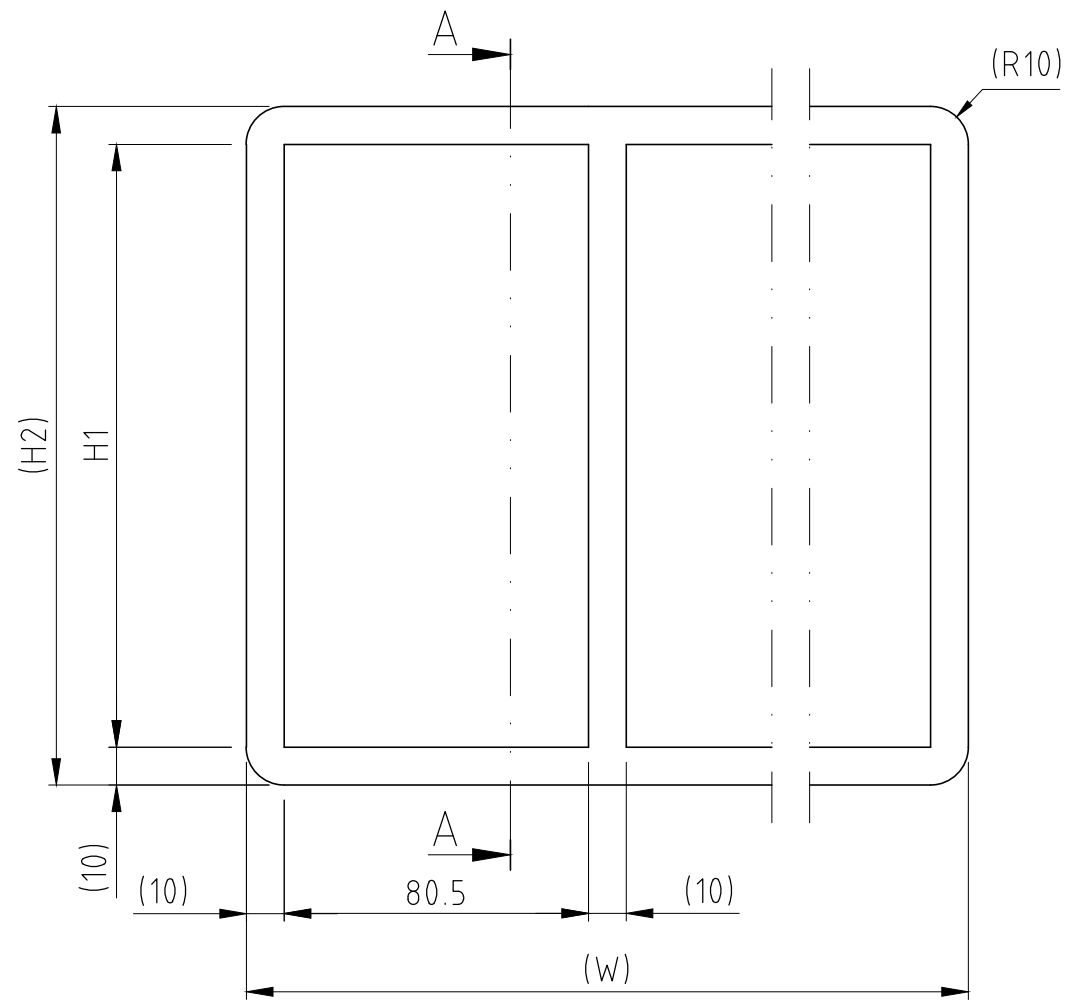


烙克赛克保留所有权利。未经授权严禁复制，使用以及向第三方泄漏。

All rights reserved. Unauthorized reproduction, use or disclosure to third parties is strictly forbidden.

Rev 3.0




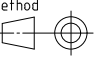
HEIGHT:

| TYPE | H1 (mm) | H2 (mm) |
|---------|---------|---------|
| S80 2xN | 101 | 121 |
| S80 4xN | 159,5 | 179,5 |
| S80 6xN | 218 | 238 |
| S80 8xN | 278 | 298 |

WIDTH:

| COMB. | W (mm) |
|-------|--------|
| x2 | 191 |
| x3 | 281,5 |
| x4 | 372 |
| x5 | 462,5 |
| x6 | 553 |
| x7 | 643,5 |
| x8 | 734 |
| x9 | 824,5 |
| x10 | 915 |

| Rev | Type of revision | Date | Sign |
|-----|------------------|------------|-----------|
| A | | 2022-07-21 | se-tontor |

| Item | Qty | Designation | Specification | | | | | Net Weight |
|---|-----|---|----------------------------|--------------------------------|--------------|--------------|--|--|
| General tolerances used for manufacturing shown in document DOC-002180 | | Designed by se-tontor | Created Date 2022-07-21 | Latest save date 2022-09-08 | Format A3 | Scale 1:2 | Sheet no | Tot Weight - |
|  www.roxtec.com | | Title S80 FRAME COMBINATION FRAME Restricted due to Information drawing | | | | | Projection method  | Drawing number S1581649 Rev A |

Information drawings show general design and nominal dimensions if not else stated