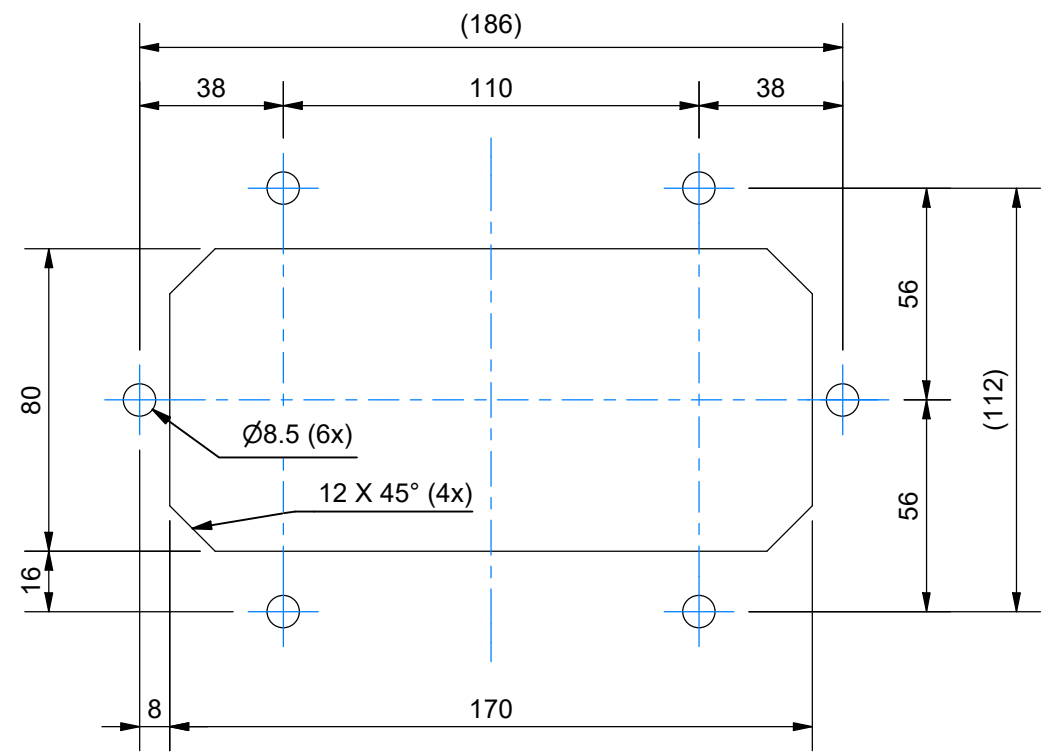


APERTURE DIMENSIONS



9	1	INSTALLATION INSTRUCTION CM		
8	1	INSTALLATION INSTRUCTION CRF		
7	1	LUBRICANT BLUE		
6	6	SEALING WASHER	M8 A4	
5	4	SERRATED WASHER	NSK-M A4 M8	
4	4	SCREW	M6S M8x40 ISO 4014 A4-70	
3	1	GASKET CRF 80x160	EPDM CELLULAR RUBBER	0
2	2	SHORT SIDE 80	ANODIZED ALUMINUM	0.2
1	2	LONG SIDE	ANODIZED ALUMINUM	0.4

ITEM	QTY	Designation	Specification				Weight
General tolerances used for manufacturing shown in document DOC-002180		Designed by/date se-robgus 2022-04-01	Latest save date 2026-01-26	Format A3	Scale 1 : 2	Sheet no 1 / 1	TotWeight 1.1 kg
		Title <b>CRF 80x160 ASSEMBLY</b>				Projection method 	
Restricted due to roxtec.com		Information drawing		Drawing number <b>S1578384</b>		Rev <b>E</b>	

E		2026-01-26	se-marfre
Rev	Type of revision	Date	Sign