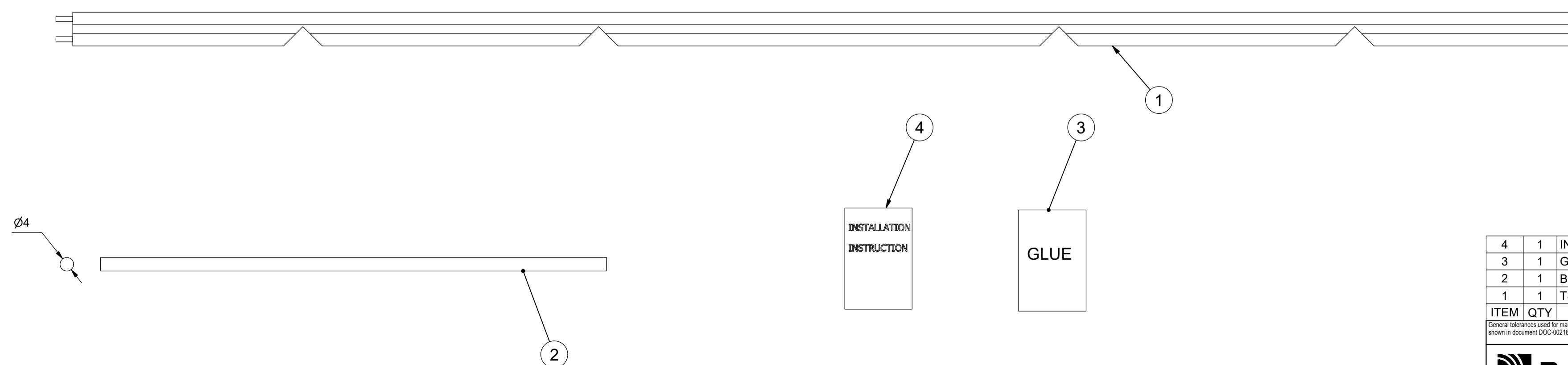
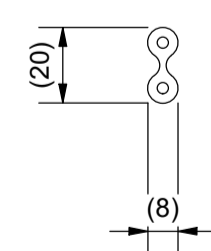


SIZE/TYPE	H1 (mm)
2x1	193
4x1	251,5
6x1	310
8x1	370
2+2x1	304
4+4x1	421
6+6x1	538
8+8x1	658
2+2+2x1	415
4+4+4x1	590,5
6+6+6x1	766
8+8+8x1	946
2+2+2+2x1	526
4+4+4+4x1	760
6+6+6+6x1	994
8+8+8+8x1	1234
SIZE/TYPE	W1 (mm)
Nx1	192,5

SIZE/TYPE	H1 (mm)
2xN	173
4xN	231,5
6xN	290
8xN	350
2+2xN	286
4+4xN	403
6+6xN	520
8+8xN	640
2+2+2xN	399
4+4+4xN	574,5
6+6+6xN	750
8+8+8xN	930
2+2+2+2xN	512
4+4+4+4xN	746
6+6+6+6xN	980
8+8+8+8xN	1220

SIZE/TYPE	W1 (mm)
x2	323
x3	453,5
x4	584
x5	714,5
x6	845
x7	975,5
x8	1106
x9	1236,5
x10	1367
x11	1497,5
x12	1628
x13	1758,5
x14	1889
x15	2019,5
x16	2150
x17	2280,5
x18	2411
x19	2541,5
x20	2672
x21	2802,5
x22	2933
x23	3063,5
x24	3194
x25	3324,5



ITEM	QTY	Designation	Specification	Weight
4	1	INSTALLATION INSTRUCTION		
3	1	GLUE		
2	1	BUTYL STRIP Ø4		
1	1	TSL 20x8 RUBBER PROFILE	ROXYLON HE BLUE	0,1

General information used for manufacturing (shown in document DCC-0010)		Designed by/size	Latest save date	Format	Scale	Sheet no	Total weight
se-ronpet	2021-06-09	2021-06-09	A1		1 / 1	0,1 kg	

Title		Projection method	
SEALING STRIP ACCESSORIES TSL 20x8 FOR GH		1st angle	

www.roxtec.com		Information drawing		Drawing number		Rev	
				S1567964		A	