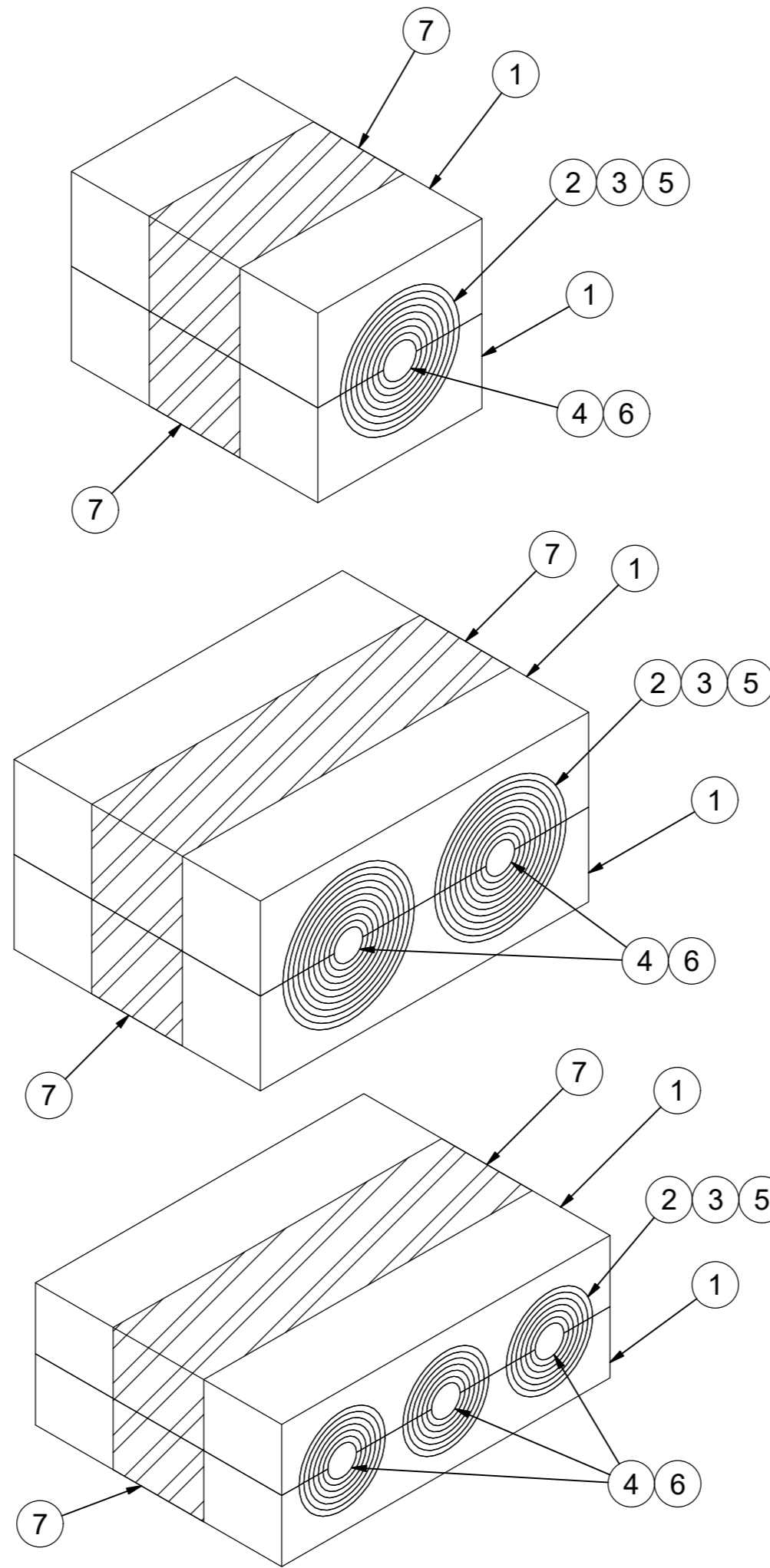
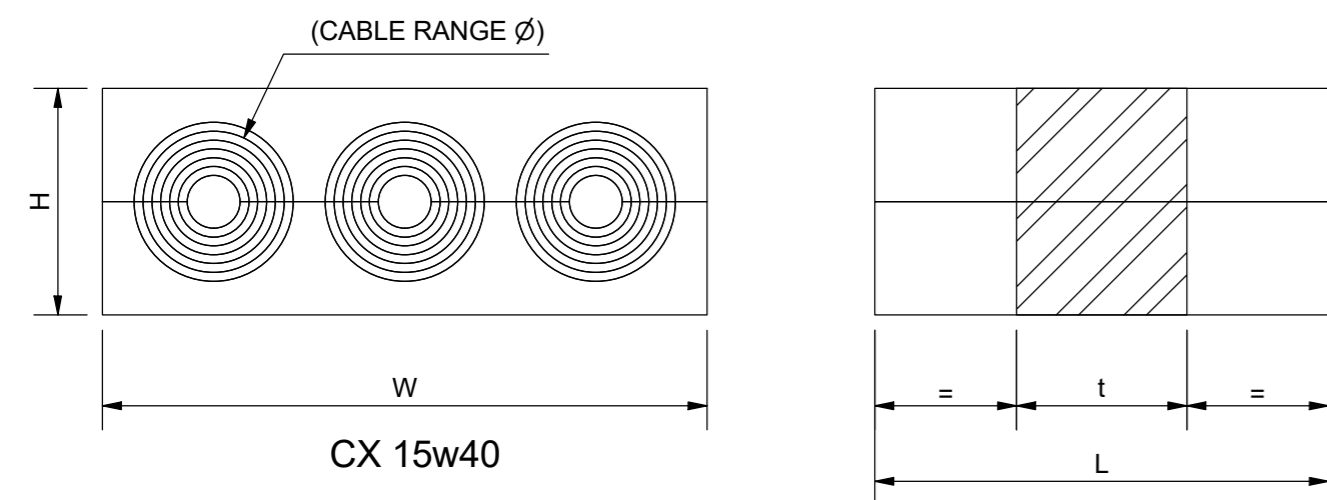
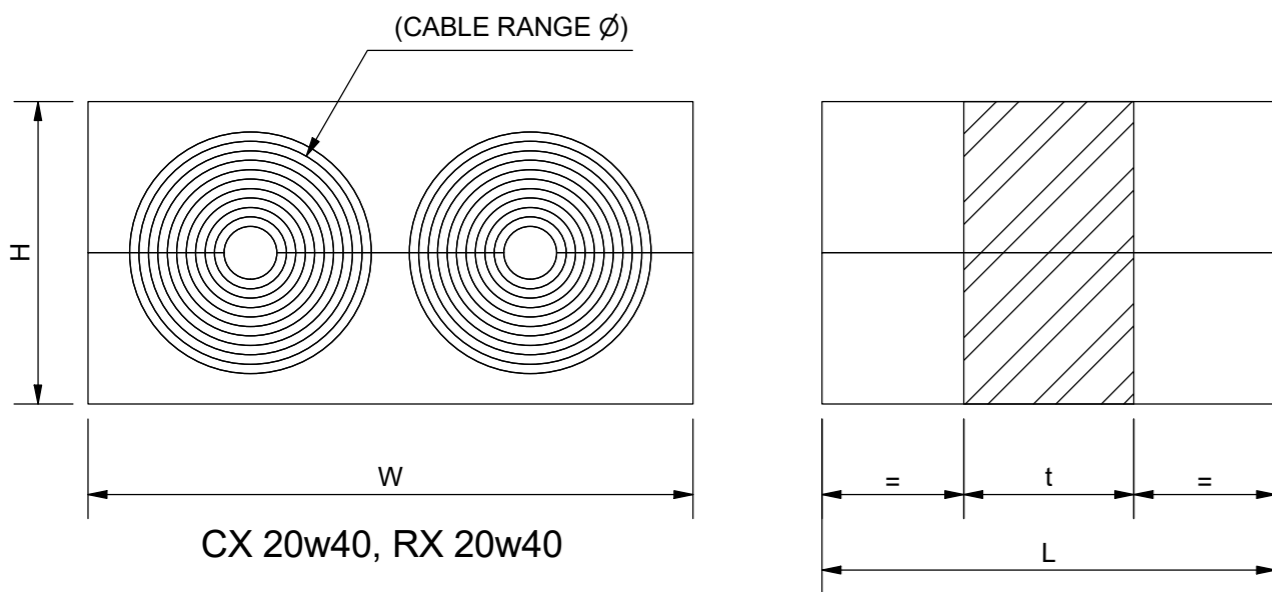
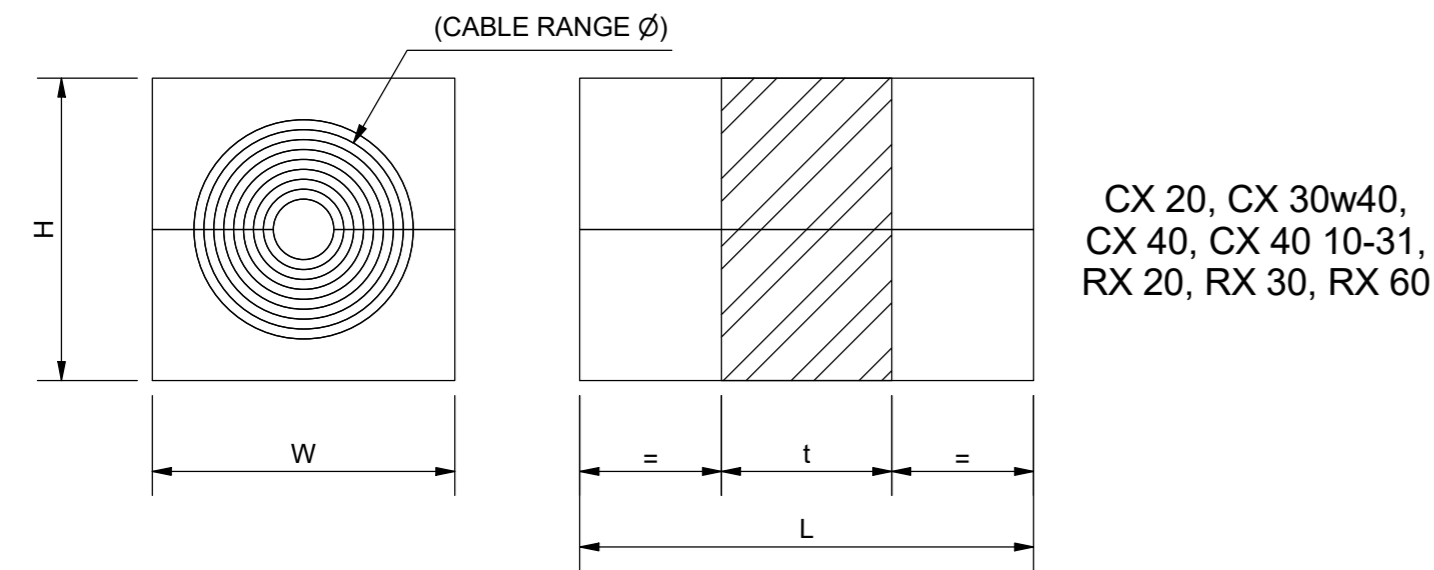
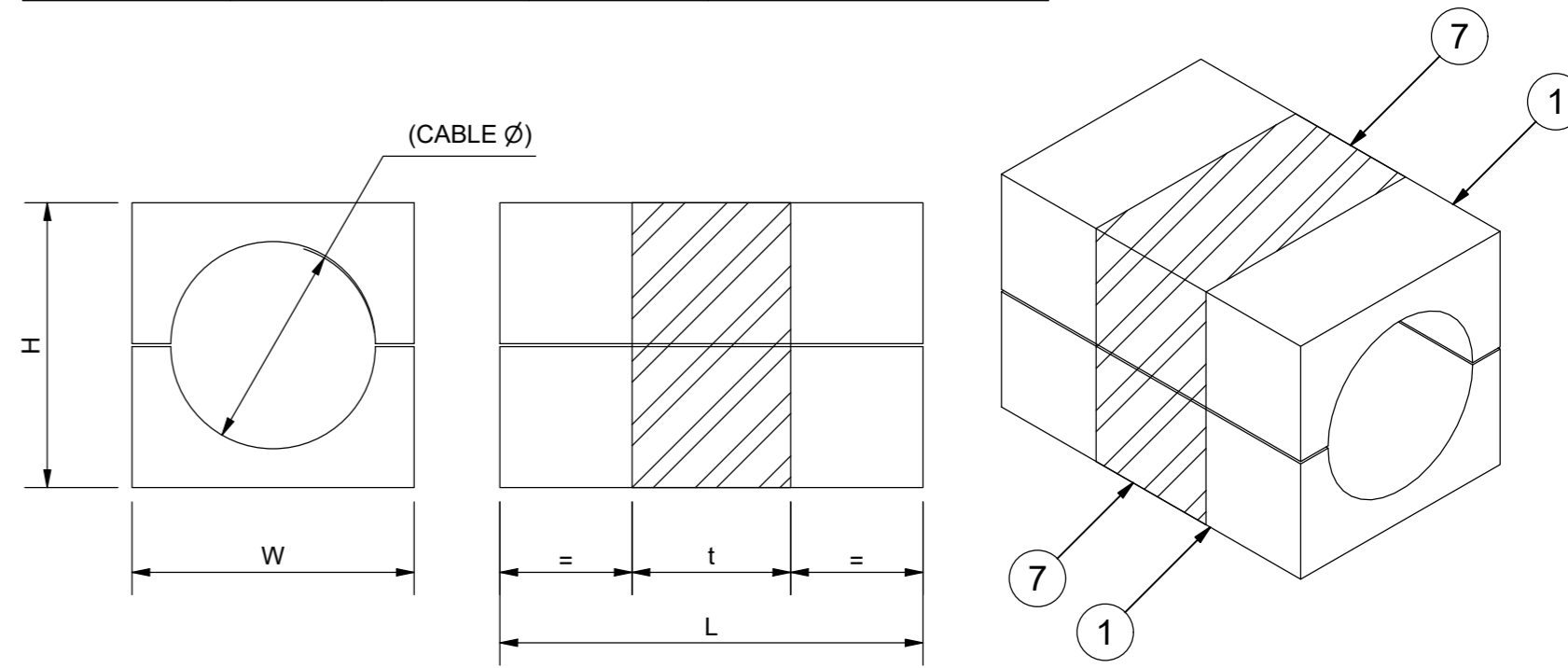


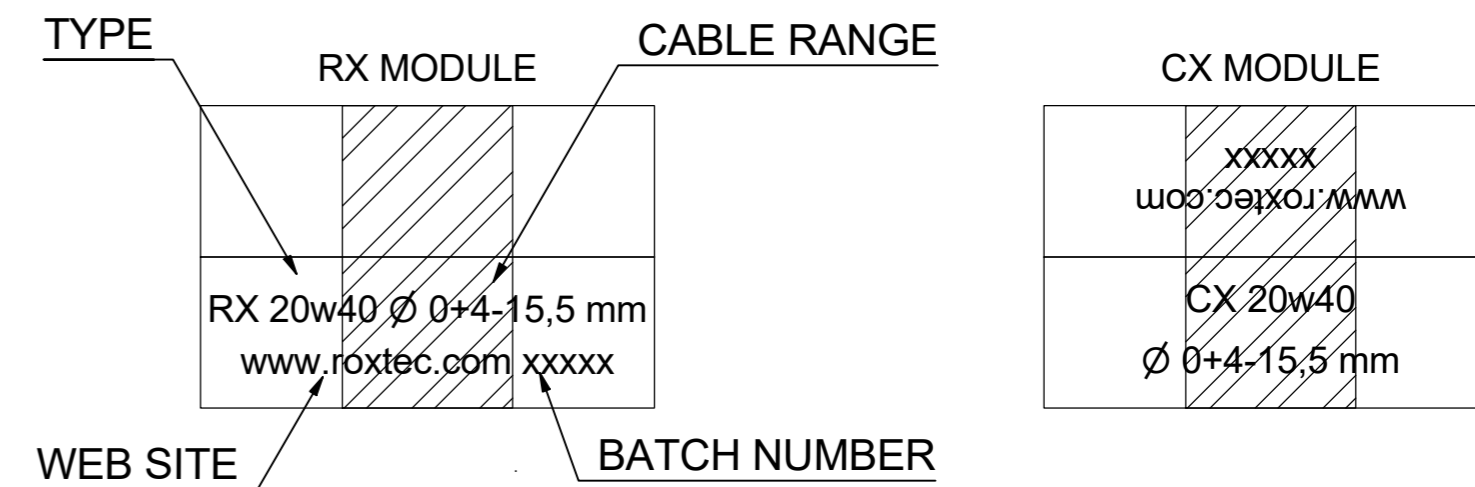
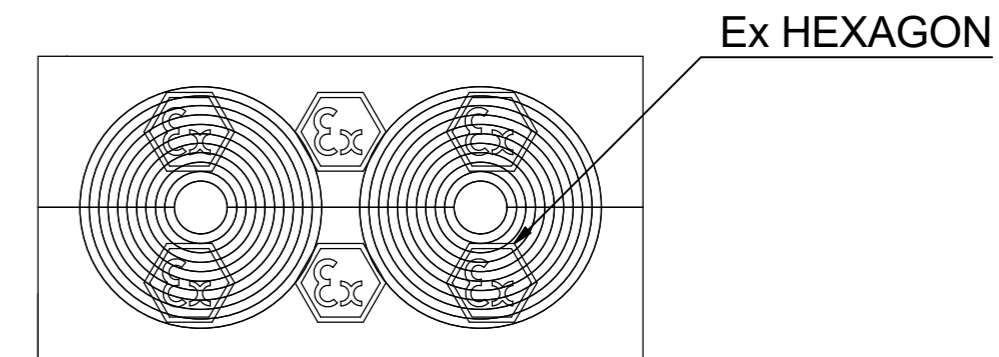
CX / RX MDM MODULES					
Type	H(mm)	W(mm)	N(Qty)	(L)	Cable Range(mm)
CX 15w40	15	40	3	40	0+4-9,5
CX 20	20	20	1	40	0+4-13,5
CX 20w40	20	40	2	40	0+4-15,5
CX 30w40	30	40	1	40	0+10-24
CX 40	40	40	1	40	0+21,5-33,5
CX 40 10-31	40	40	1	40	0+9,5-31
RX 20	20	20	1	60	0+4-13,5
RX 20w40	20	40	2	60	0+4-15,5
RX 30	30	30	1	60	0+10-24
RX 60	60	60	1	60	0+24-52



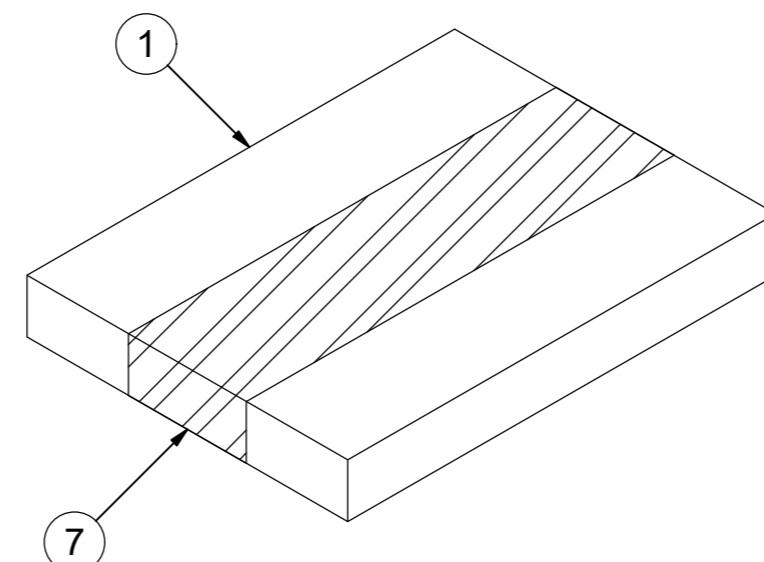
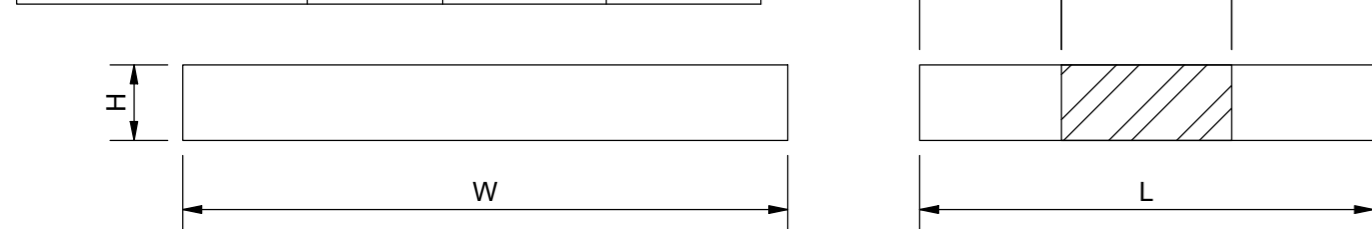
SINGLE DIAMETER MODULES				
Type	H(mm)	W(mm)	L(mm)	Cable Ø(mm)
CX 20/14	20	20	40	14
CX 20/15	20	20	40	15
CX 20/16	20	20	40	16
CX 40/34	40	40	40	34
CX 40/36	40	40	40	36



MODULE MARKING



SOLID COMPENSATION MODULES			
Type	H(mm)	W(mm)	L(mm)
CX 5w40/0	5	40	40
CX 10w40/0	10	40	40
CX 20/0	20	20	40
CX 40/0	40	40	40
RX 20/0	20	20	60
RX 30/0	30	30	60
RX 60/0	60	60	60



ITEM	QTY	Designation	Specification	Weight
7	-	TIN-CLAD COPPER TAPE		
6	-	CORE GLUE		
5	-	PROFILE GLUE		
4	N	CORE		
3	-	MDM BAND BLUE		
2	-	MDM BAND BLACK		
1	-	RUBBER PROFILE		

General tolerance:	Welded details:	General surface roughness:	Designed by/date	Latest save date	Format	Scale	Sheet no	Total Weight
ISO 2768-1/2-m/K	EN ISO 5817-B	EN ISO 1302-BF	se-danstr 2020-03-12	2020-03-12	A2		1 / 1	N/A
			CX AND RX MODULES ASSEMBLY		Restricted due to Information drawing		Drawing number S1553485	
www.roxtec.com			Title		Rev		A	

All rights reserved. Unauthorised reproduction, use or disclosure to third parties is strictly forbidden.

All rights reserved. Unauthorised reproduction, use or disclosure to third parties is strictly forbidden.