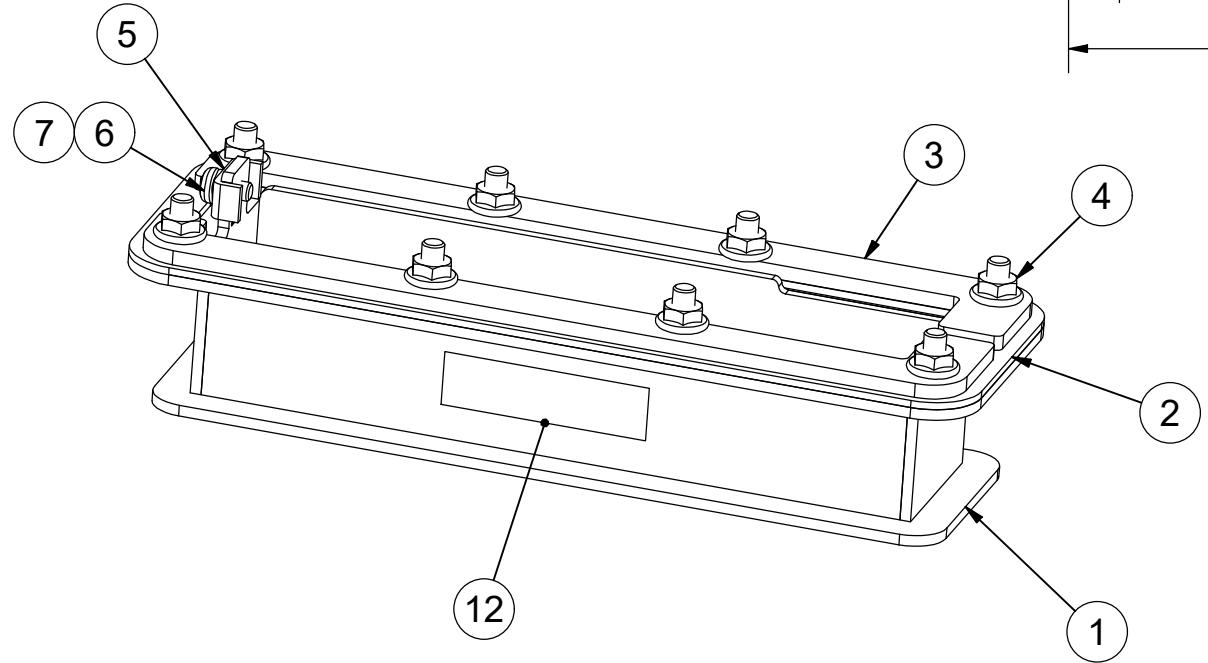
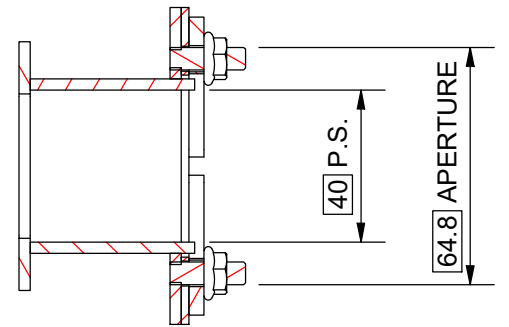
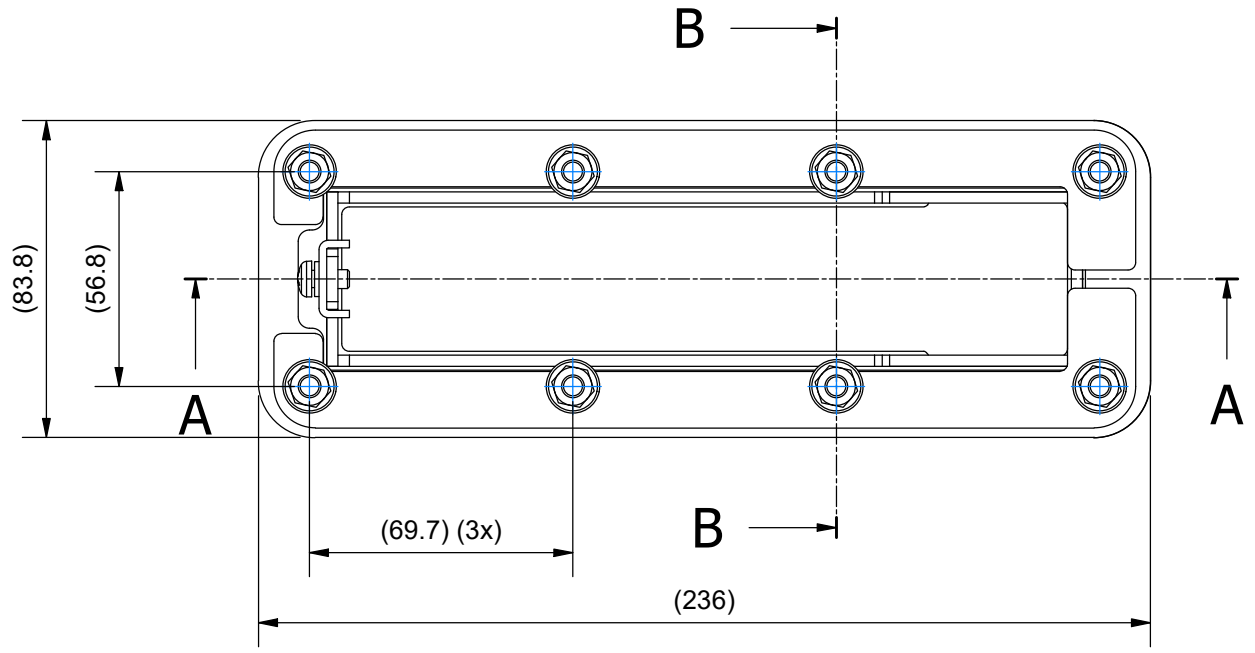
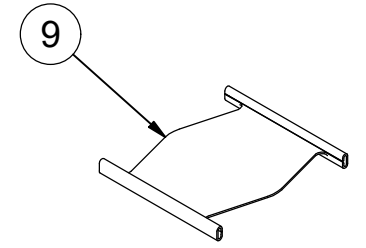
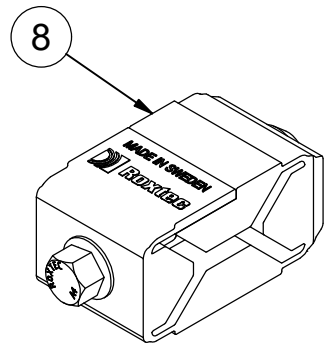
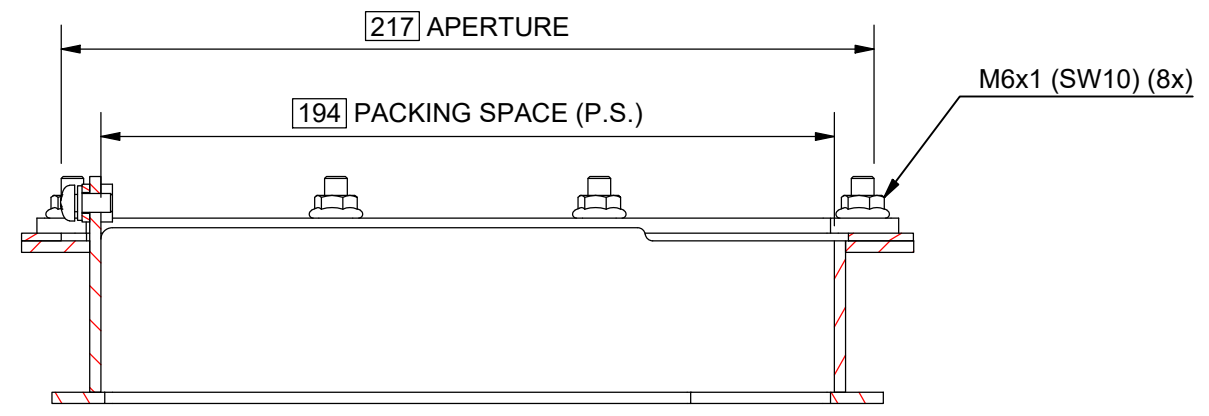
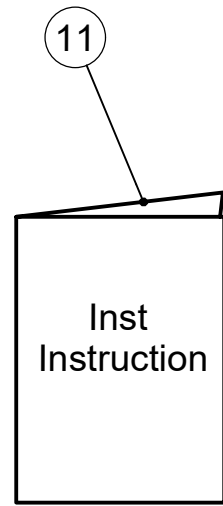
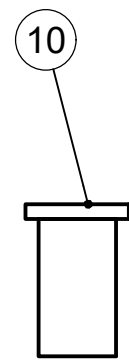


烙克赛克保留所有权利。未经授权严禁复制，使用以及向第三方泄漏。

Rev 1.0 All rights reserved. Unauthorized reproduction, use or disclosure to third parties is strictly forbidden.



12	1	LABEL	HD 16	
11	1	INSTALLATION INSTRUCTION		
10	1	LUBRICANT		
9	1	STAYPLATE 40 HD	ACID PROOF STAINLESS STEEL	
8	1	C WEDGE HD AISI316		
7	1	SCREW	M5x10, A4	
6	1	SPRING WASHER	M5, A4	
5	1	SADDLE WASHER	ACID PROOF STAINLESS STEEL	
4	8	FLANGED NUT	M6 SERRATED A4	
3	2	COUNTER FRAME	ACID PROOF STAINLESS STEEL	
2	1	GASKET	EPDM CELLULAR RUBBER	
1	1	HD 16 FRAME	ACID PROOF STAINLESS STEEL	

ITEM	QTY	Designation	Specification	Weight
General tolerance:		Welded details:	General surface roughness:	Designed by/date
ISO 2768-1/2-m/K		EN ISO 5817-B	Ra 12.5	se-robgus 2019-03-05
EN ISO 13920-BF		EN ISO 10042-B		Latest save date
				2024-01-30
				Format
				A3
				Scale
				Sheet no
				1 / 1
				TotWeight
				N/A
Title				Projection method
HD 16 FRAME ASSEMBLY				First angle
Restricted due to			Drawing number	Rev
Information drawing			S1541524	B

B		2024-01-30	se-parham
Rev	Type of revision	Date	Sign