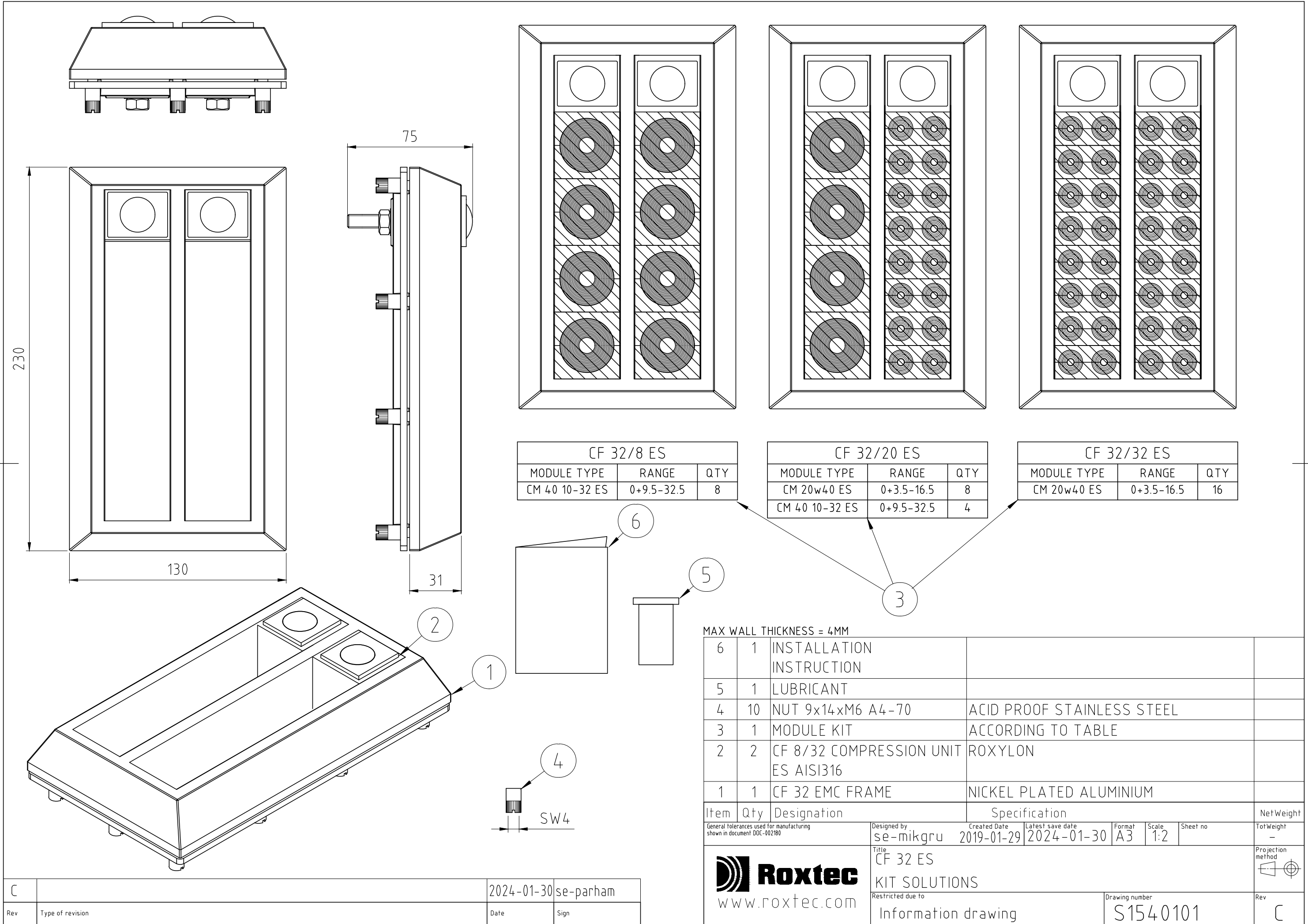


烙克囊克保留所有权利。未经授权严禁复制，使用以及向第三方泄漏。

All rights reserved. Unauthorized reproduction, use or disclosure to third parties is strictly forbidden.

Rev 2.0



CF 32/8 ES		
MODULE TYPE	RANGE	QTY
CM 40 10-32 ES	0+9.5-32.5	8

CF 32/20 ES		
MODULE TYPE	RANGE	QTY
CM 20w40 ES	0+3.5-16.5	8
CM 40 10-32 ES	0+9.5-32.5	4

CF 32/32 ES		
MODULE TYPE	RANGE	QTY
CM 20w40 ES	0+3.5-16.5	16

MAX WALL THICKNESS = 4MM

Item	Qty	Designation	Specification	NetWeight
6	1	INSTALLATION INSTRUCTION		
5	1	LUBRICANT		
4	10	NUT 9x14xM6 A4-70	ACID PROOF STAINLESS STEEL	
3	1	MODULE KIT	ACCORDING TO TABLE	
2	2	CF 8/32 COMPRESSION UNIT ES AISI316	ROXYLON	
1	1	CF 32 EMC FRAME	NICKEL PLATED ALUMINIUM	

General tolerances used for manufacturing shown in document DOC-002180		Designed by se-mikgru	Created Date 2019-01-29	Latest save date 2024-01-30	Format A3	Scale 1:2	Sheet no	NetWeight -
 www.roxtec.com		Title CF 32 ES KIT SOLUTIONS		Drawing number S1540101		Projection method 		Rev C
Restricted due to Information drawing								

Rev	Type of revision	Date	Sign
C		2024-01-30	se-parham

Information drawings show general design and nominal dimensions if not else stated