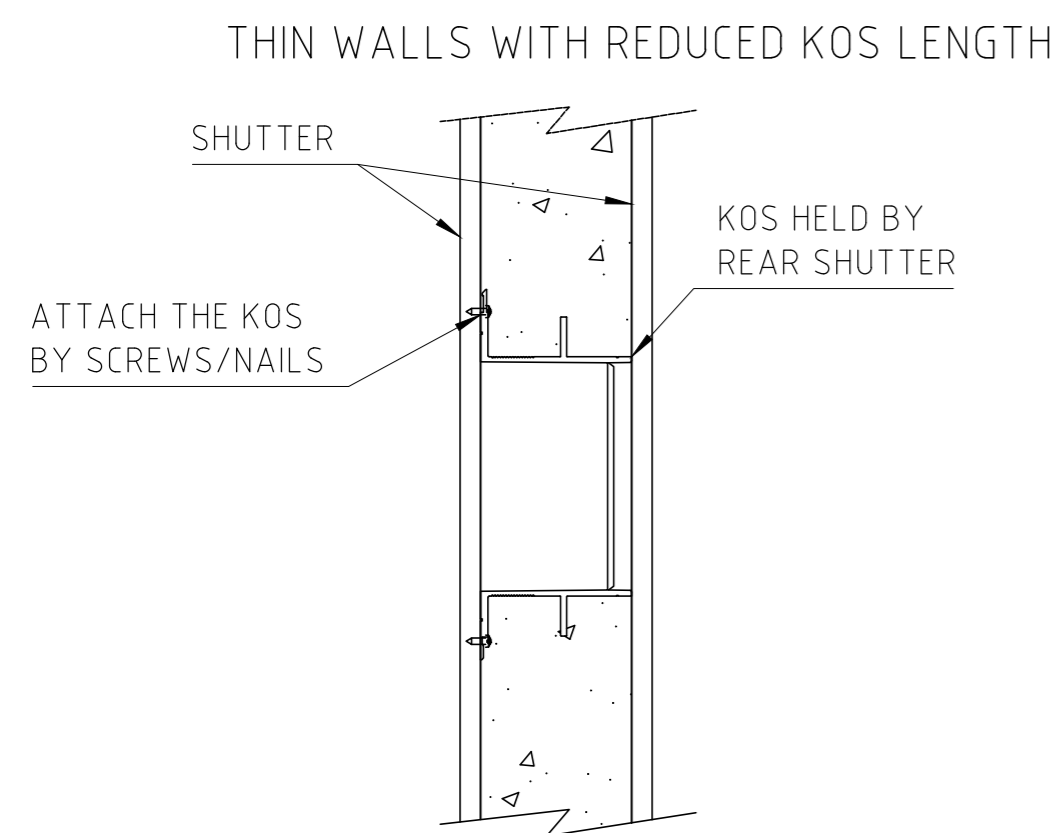
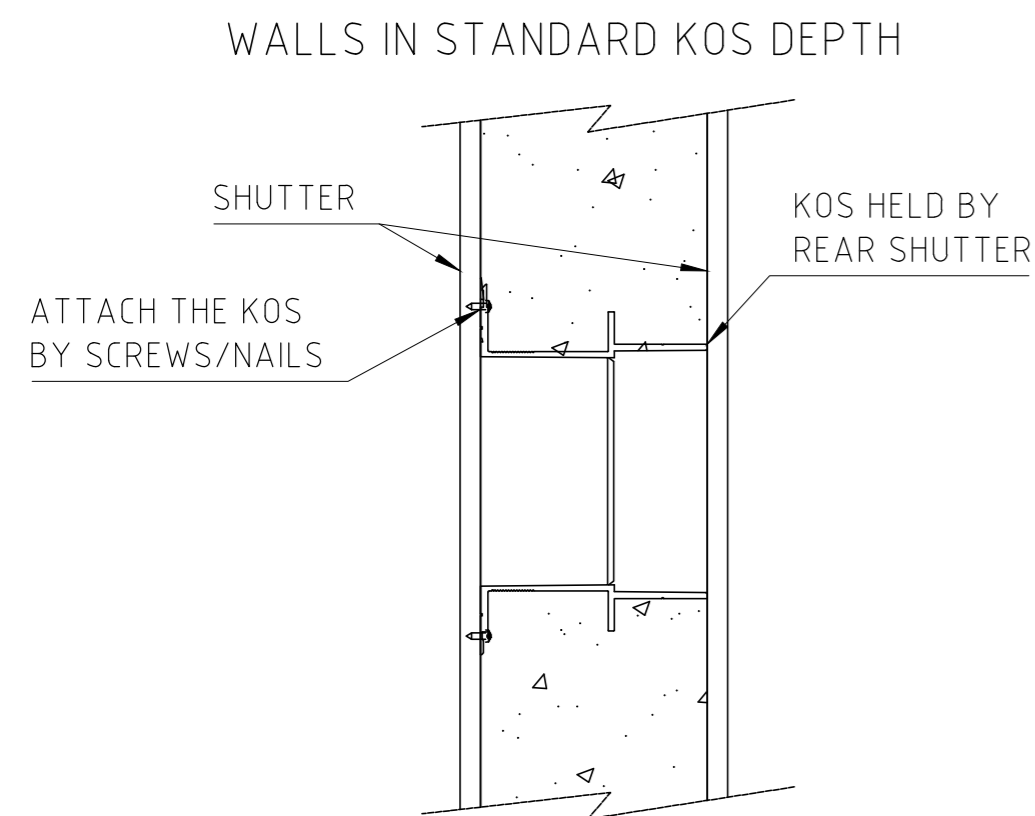
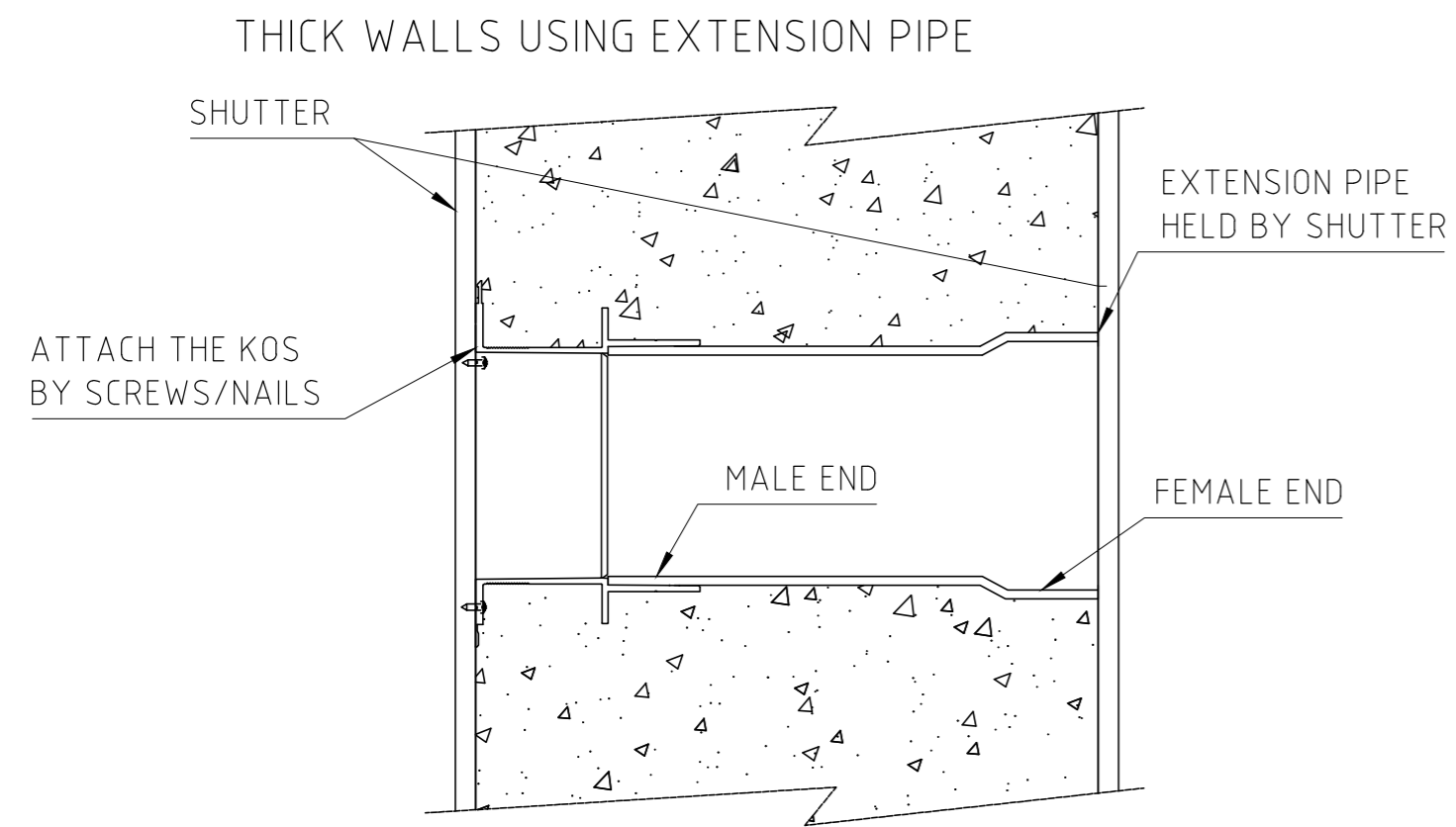
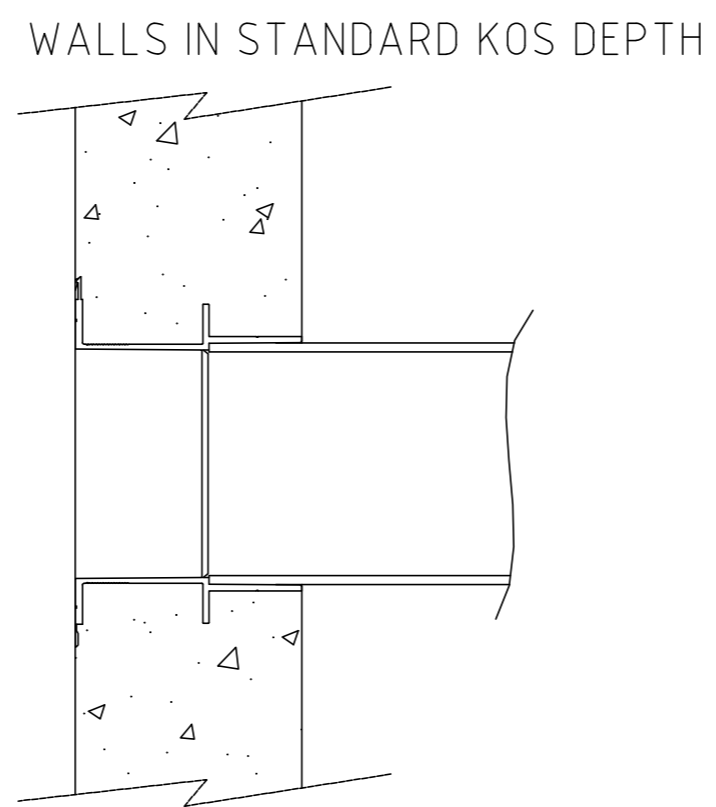
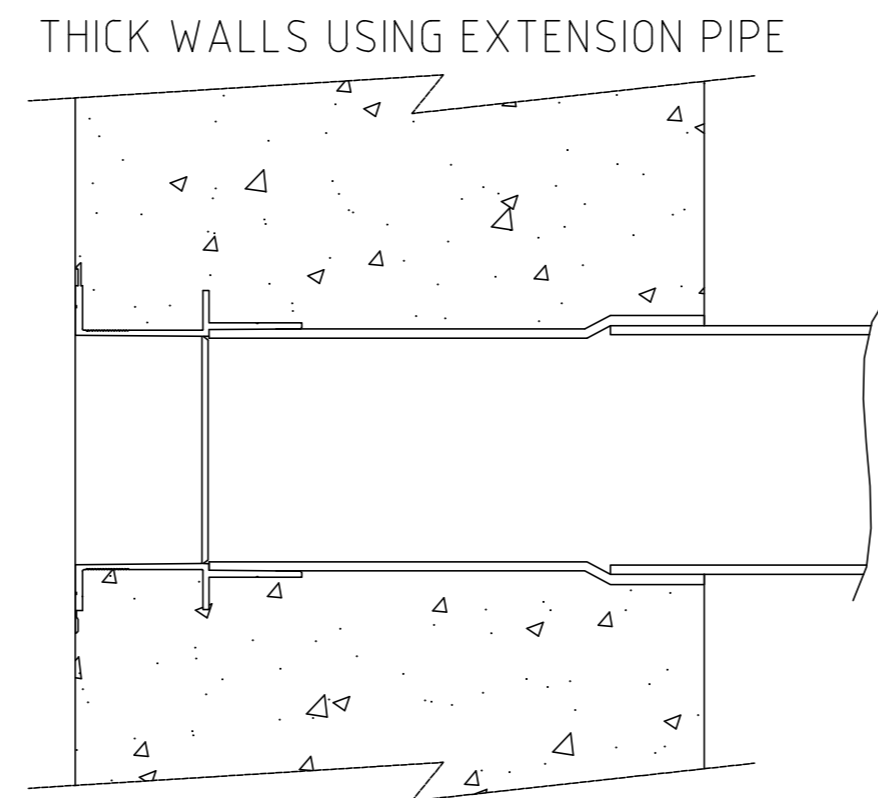


POSITION BETWEEN SHUTTERS

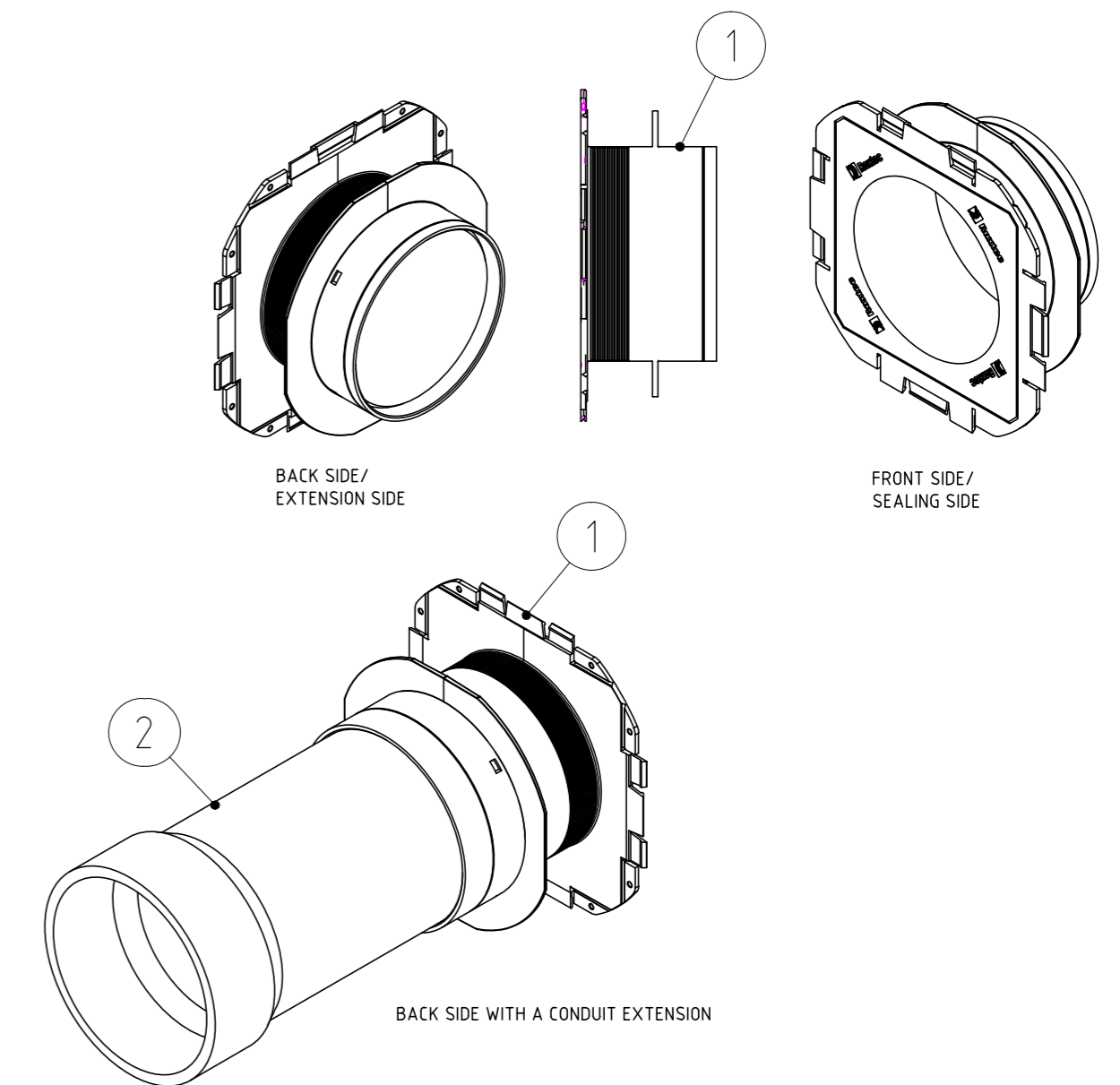
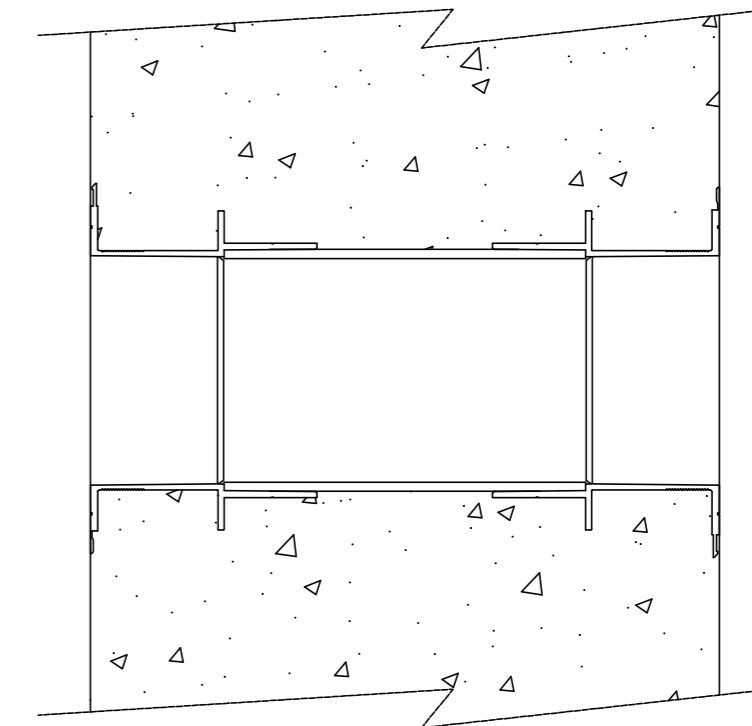


ADDING CONDUITS IN OR OUTSIDE



DOUBLE SIDED KOS INSTALLATION

THICK WALLS USING SEALS ON BOTH SIDES



NOTE:

- WATERPROOF CONCRETE MUST BE USED
- CONSOLIDATION AT SLEEVE AREA REQUIRED TO FILL VOIDS
- SLEEVE LENGTH CAN BE CUT ON SITE IF NECESSARY
- EXTENTION PIPES NEEDS TO BE FULLY INSERTED.

2	-	CABLE PROTECTION PIPE	STD PIPE DIMENSIONS FIT INSIDE KOS	
1	-	KOS	KNOCK-OUT SLEEVE	
Item	Qty	Designation	Specification	NetWeight
General tolerances used for manufacturing shown in document DOC-002180		Designed by	Created Date	Latest save date
		se-robqus	2018-07-04	2024-04-23
		Title	Format	Scale
		KOS - KNOCK OUT SLEEVE	A2	1:5
		INSTALLATION ALTERNATIVES	Sheet no	Projection method
		Restricted due to	Information drawing	Rev
		www.roxtec.com	Drawing number	S1534137
				C

烙克賽克保留所有权利。未经授权严禁复制，使用以及向第三方泄漏。

All rights reserved. Unauthorized reproduction, use or disclosure to third parties is strictly forbidden.

Rev 2.0

C	VISUAL PIPE UPDATE.	2024-04-23	se-larlar
Rev	Type of revision	Date	Sign