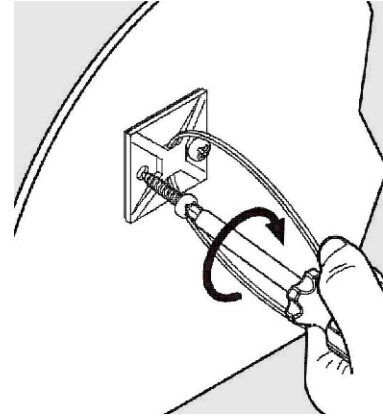
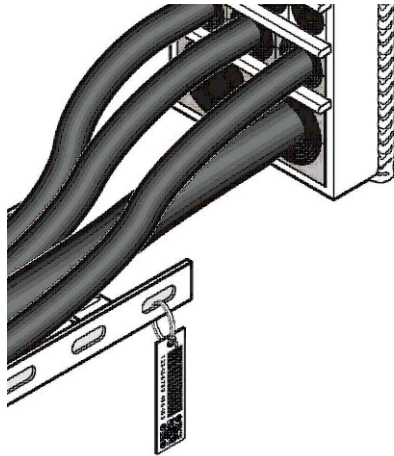


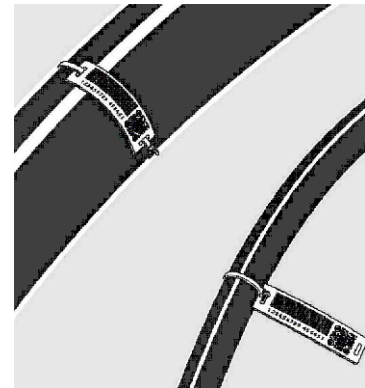
ATTACHMENT WITH SELF ADHESIVE
STRAP HOLDER AND STRAP




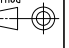
ATTACHMENT WITH SCREWED ON
STRAP HOLDER AND STRAP



ATTACHMENT WITH STRAP ON LADDER
OR TRAY



ATTACHMENT WITH STRAP ON CABLE

| Item | Qty | Designation | Specification | | | | | Net Weight | |
|---|---------------------------------|--|--|----------------------------|--------------------------------|--------------|--------------|---|----------------|
| General Tolerance ISO 2768-1/2-m/K | Welded details EN ISO 5817-B | General surface roughness, Ra 12.5 | Designed by se-jenboh | Created Date 2018-05-08 | Latest save date 2018-05-08 | Format A3 | Scale 1:1 | Sheet no | TotWeight - |
|  Roxtec www.roxtec.com | | | Title ROXTEC TOOLS ROXTEC TRANSIT IDENTIFICATION TAG Restricted due to Information drawing | | | | | Projection method  | Rev A |
| | | | Drawing number S1532671 | | | | | | |

| Rev | Type of revision | Date | Sign |
|-----|------------------|------------|-----------|
| A | | 2018-05-08 | se-jenboh |