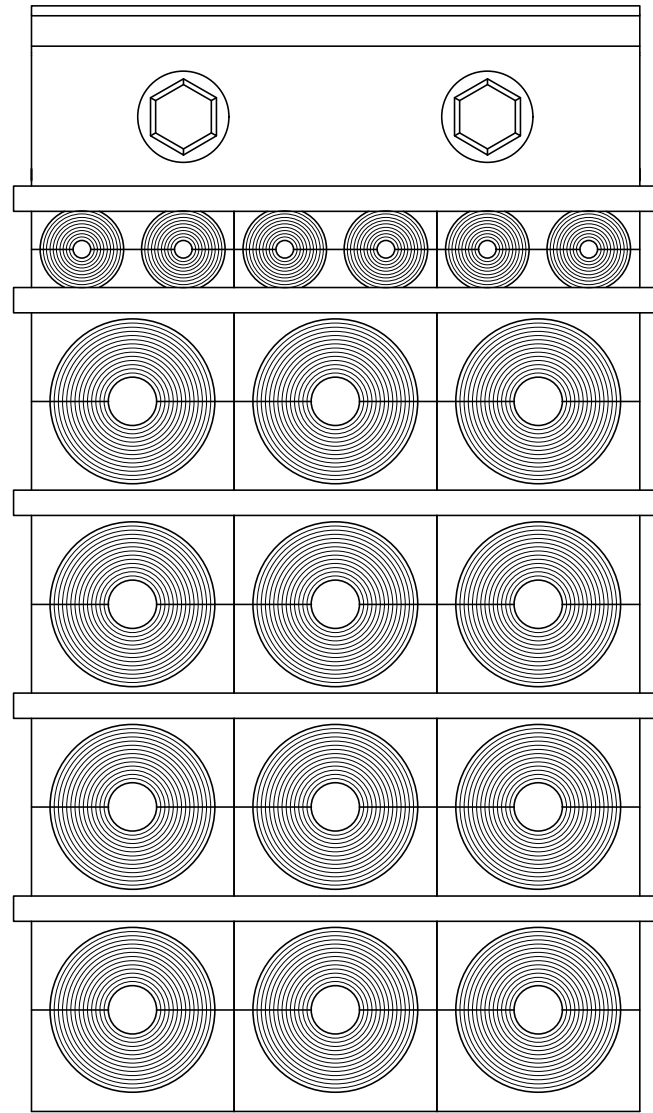


烙克赛克保留所有权利。未经授权严禁复制，
使用以及向第三方泄露。

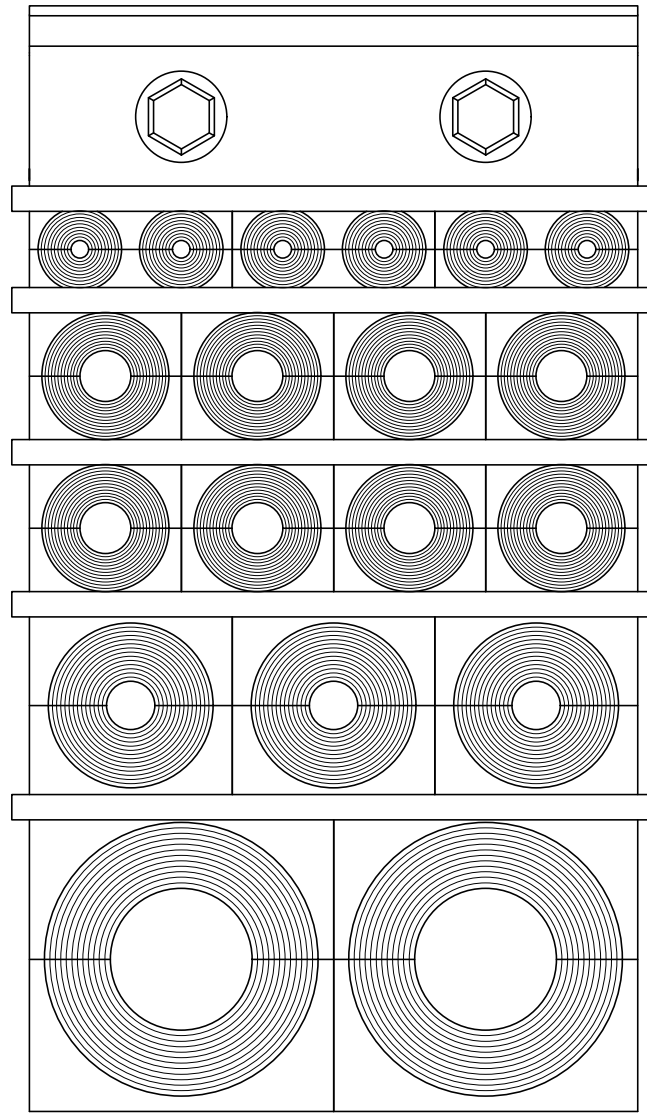
All rights reserved. Unauthorized reproduction, use
or disclosure to third parties is strictly forbidden.

Rev 10



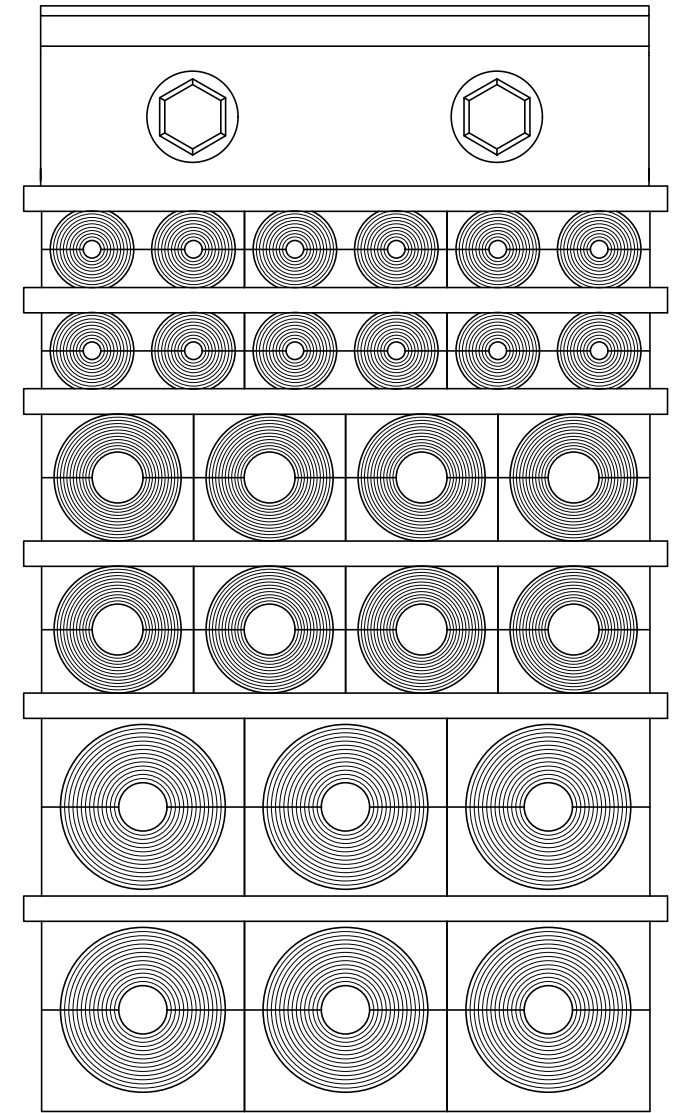
SEALING KIT 6/18 BG B Ex

- 12x RM 40 BG B Ex RANGE $\phi 0+21,5-34,5$
- 3x RM 20w40 BG B Ex RANGE $\phi 0+3,5-16,5$
- 5x STAYPLATE 120 Ex
- 1x WEDGE 120 Ex
- 1X LUBRICANT
- 1x INSTALLATION INSTRUCTION
- 1x Ex MEASURING TOOL



SEALING KIT 6/19 BG B Ex

- 2x RM 60 BG B Ex RANGE $\phi 0+28-54$
- 3x RM 40 BG B Ex RANGE $\phi 0+21,5-34,5$
- 8x RM 30 BG B Ex RANGE $\phi 0+10-25$
- 3x RM 20w40 BG B Ex RANGE $\phi 0+3,5-16,5$
- 5x STAYPLATE Ex
- 1x WEDGE 120 Ex
- 1x LUBRICANT
- 1x INSTALLATION INSTRUCTION
- 1x Ex MEASURING TOOL




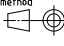
SEALING KIT 6/26 BG B Ex

- 6x RM 40 BG B Ex RANGE $\phi 0+21,5-34,5$
- 8x RM 30 BG B Ex RANGE $\phi 0+10-25$
- 6x RM 20w40 BG B Ex RANGE $\phi 0+3,5-16,5$
- 6x STAYPLATE Ex
- 1x WEDGE 120 Ex
- 1X LUBRICANT
- 1x INSTALLATION INSTRUCTION
- 1x Ex MEASURING TOOL

NOTE:

SEALING KITS ARE AVAILABLE IN
GALVANIZED AND ACID PROOF STAINLESS
STEEL VERSIONS.

B		2018-11-06	se-henols
Rev	Type of revision	Date	Sign

Item	Qty	Designation	Specification				Net Weight		
General tolerance ISO 2768-1/2-m/k EN ISO 1920-BF	Welded details EN ISO 5817-B EN ISO 10042-B	General surface roughness, Ra 12,5	Designed by se-parham	Created Date 2018-04-23	Latest save date 2018-11-06	Format A2	Scale 1:1	Sheet no	TotWeight -
 www.roxtec.com			Title SEALING KIT BG B Ex 6/18, 6/19, 6/26 Restricted due to		Drawing number S1532266		Projection method 	Rev B	