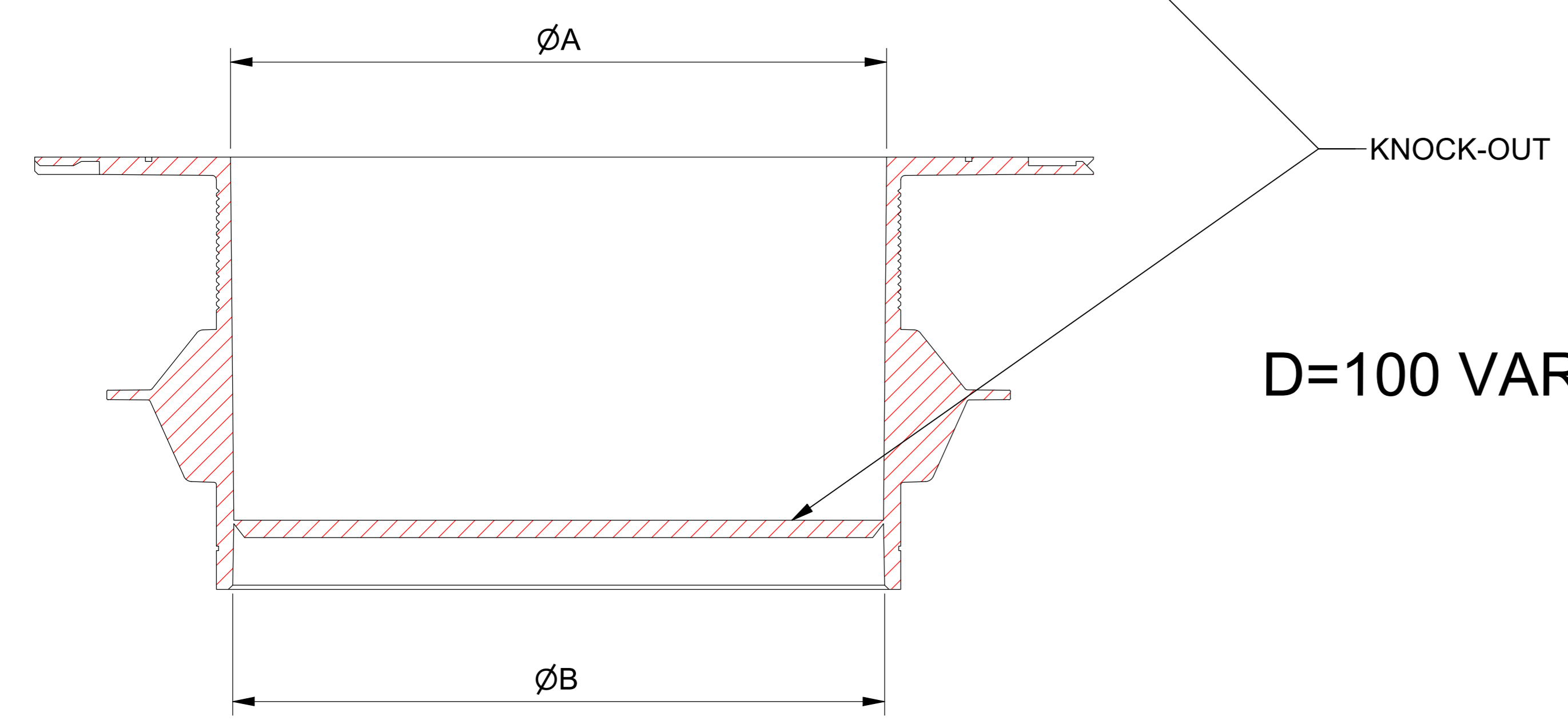
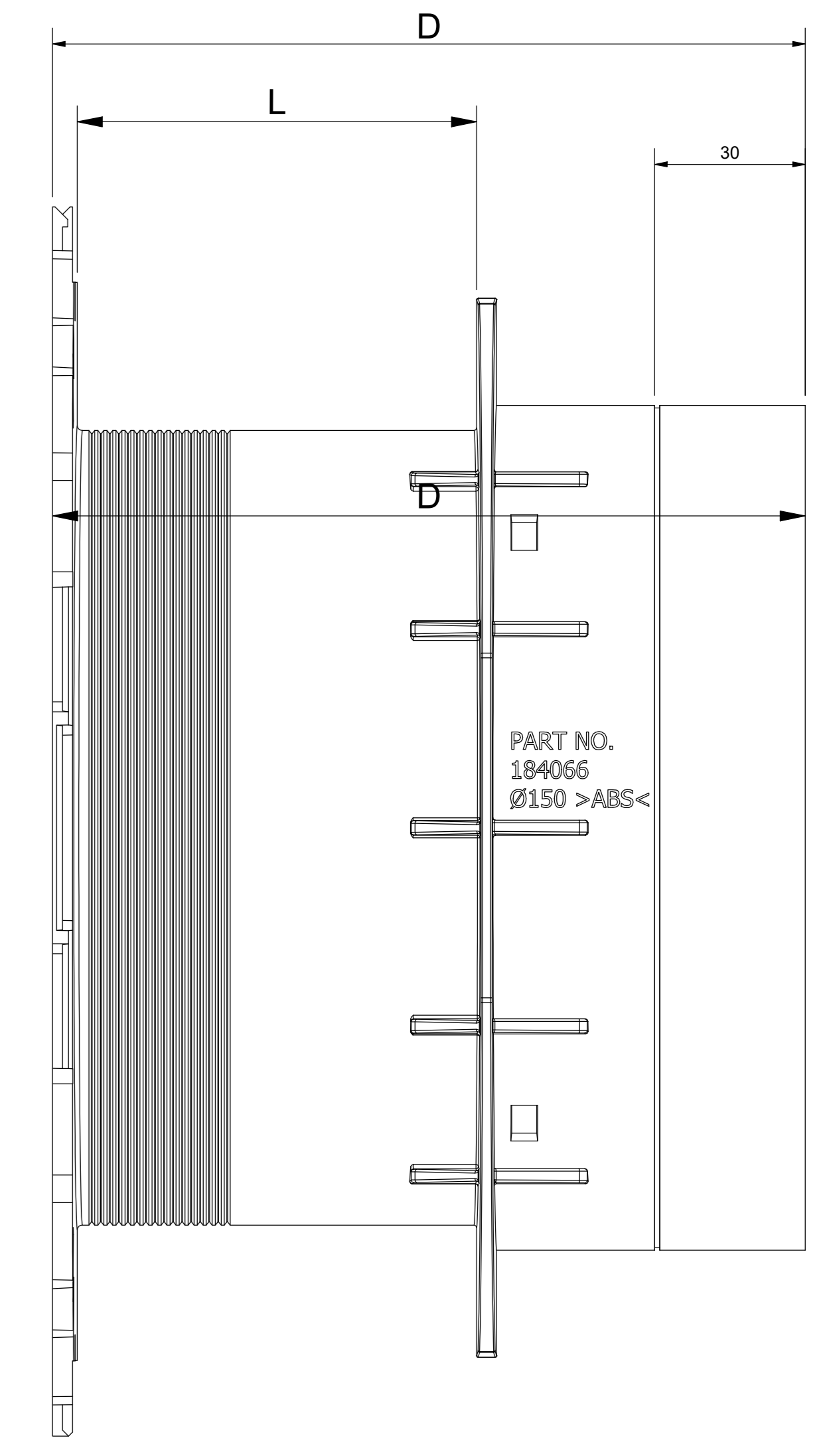
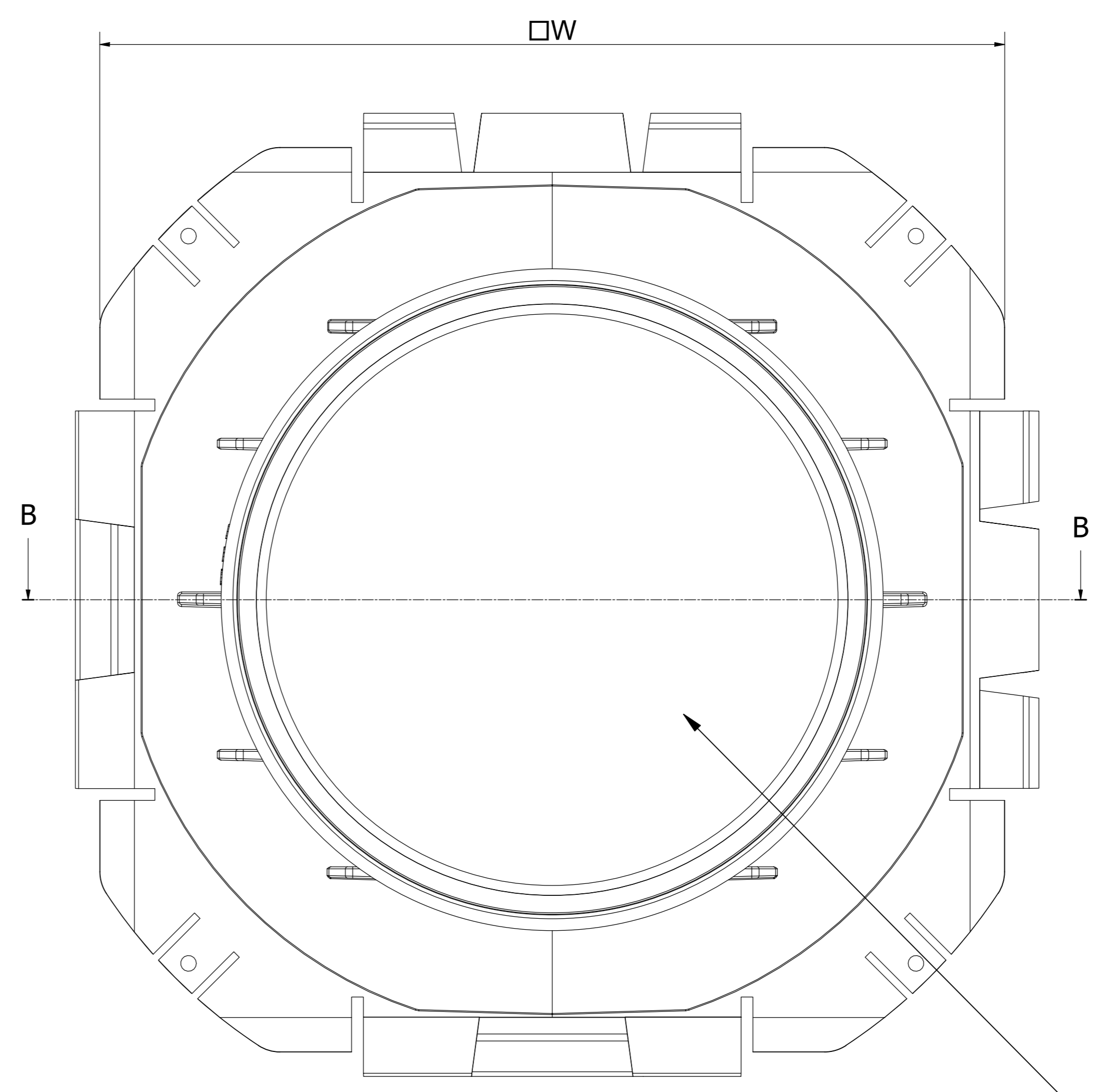
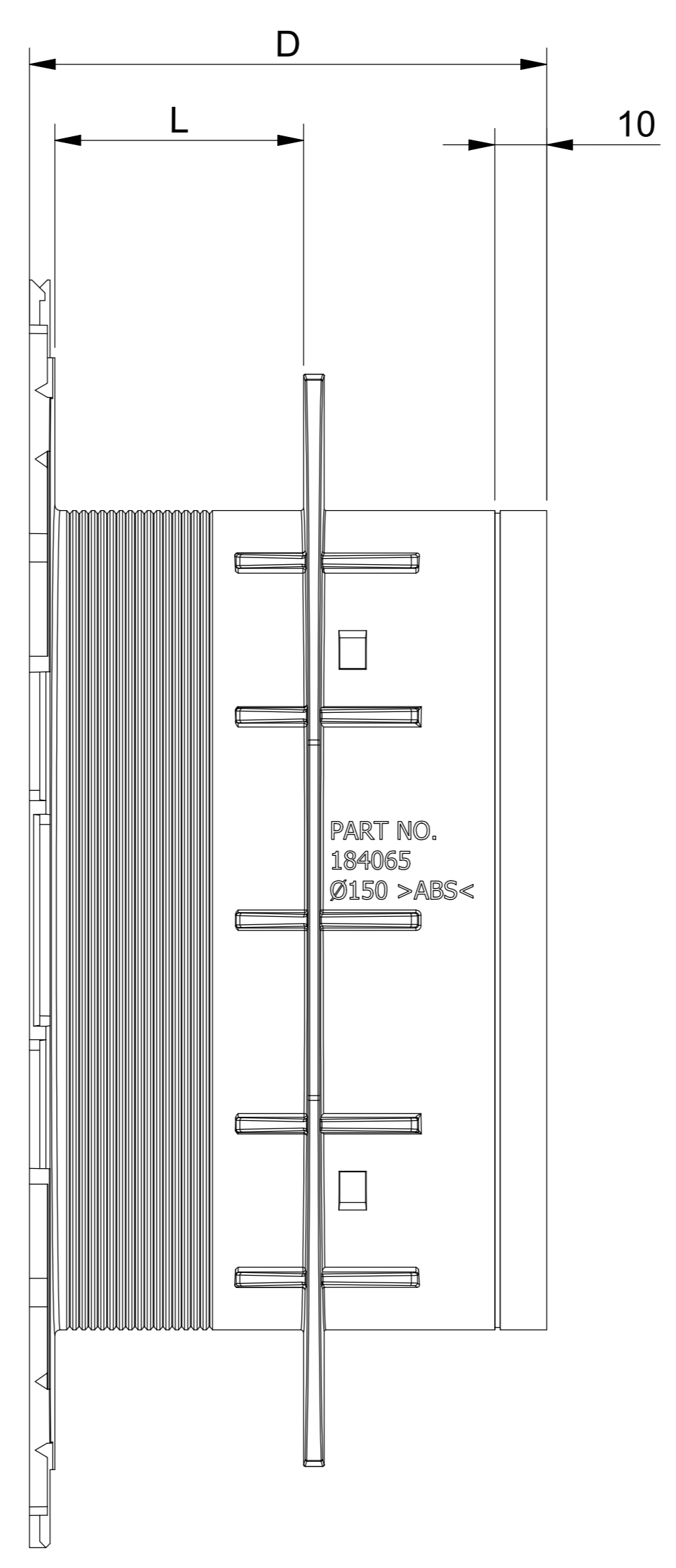
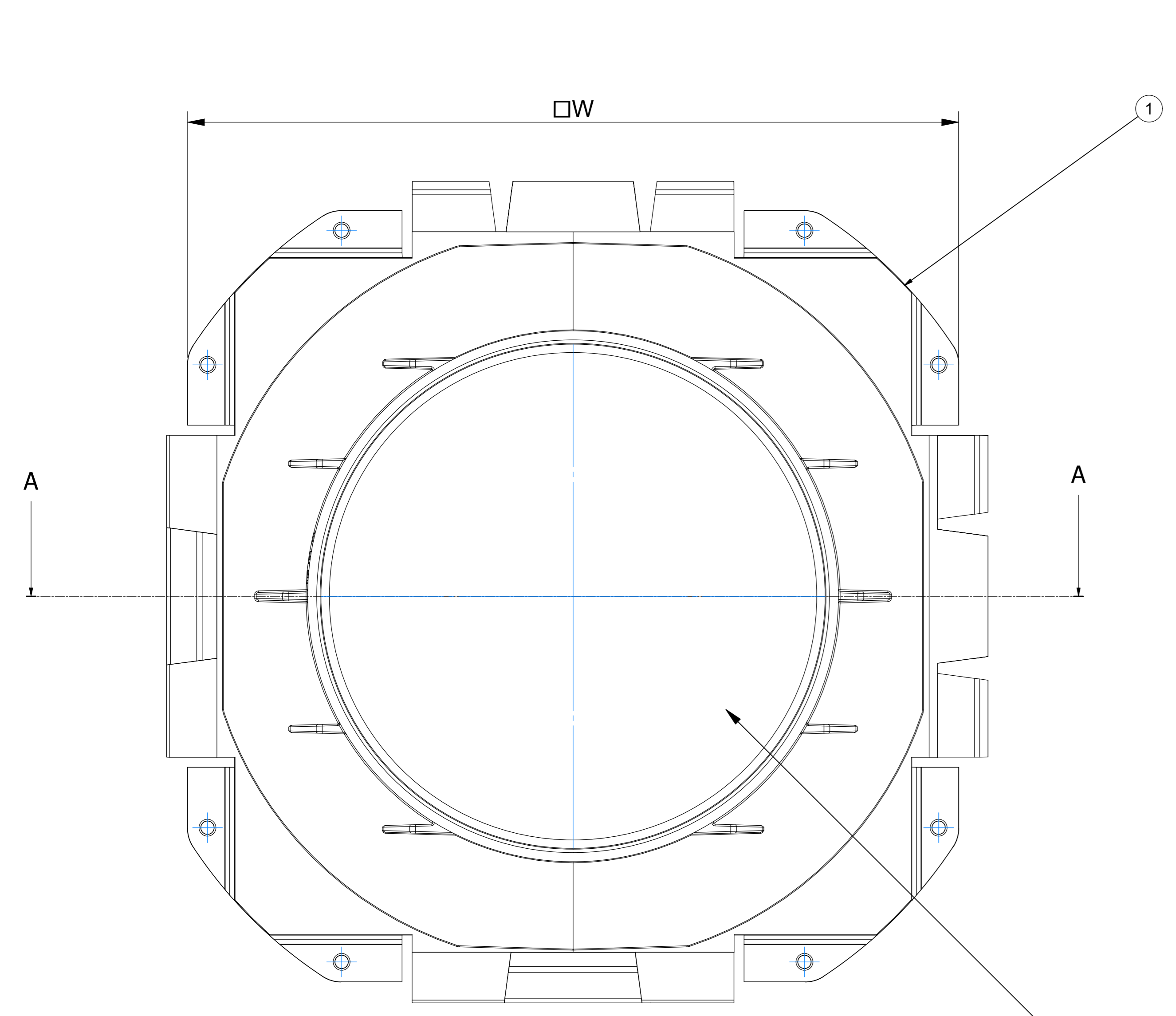
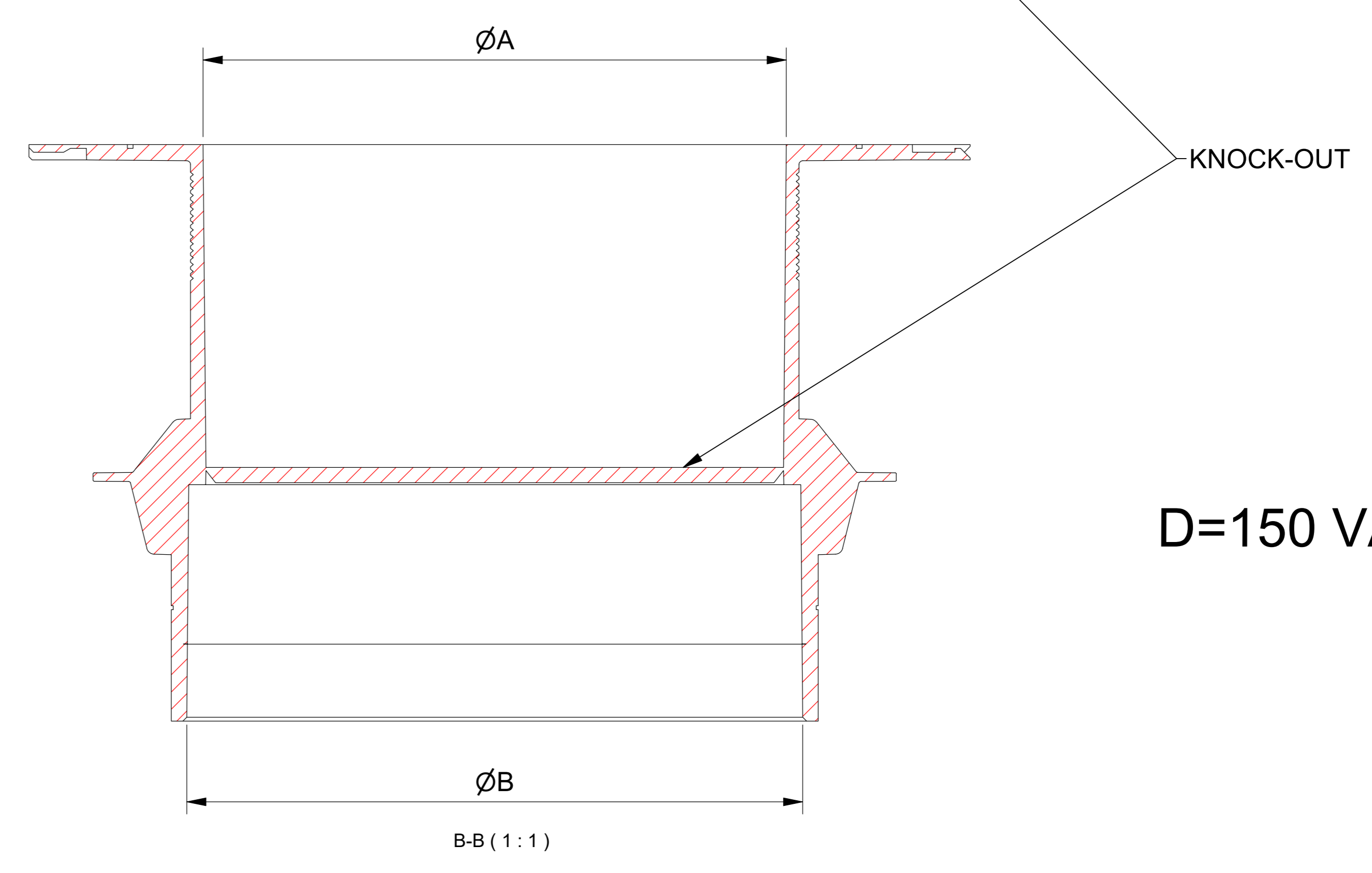


所有权利保留。未经Roxtec生产许可，禁止以任何形式复制或传播。Roxtec及其产品均为注册商标。

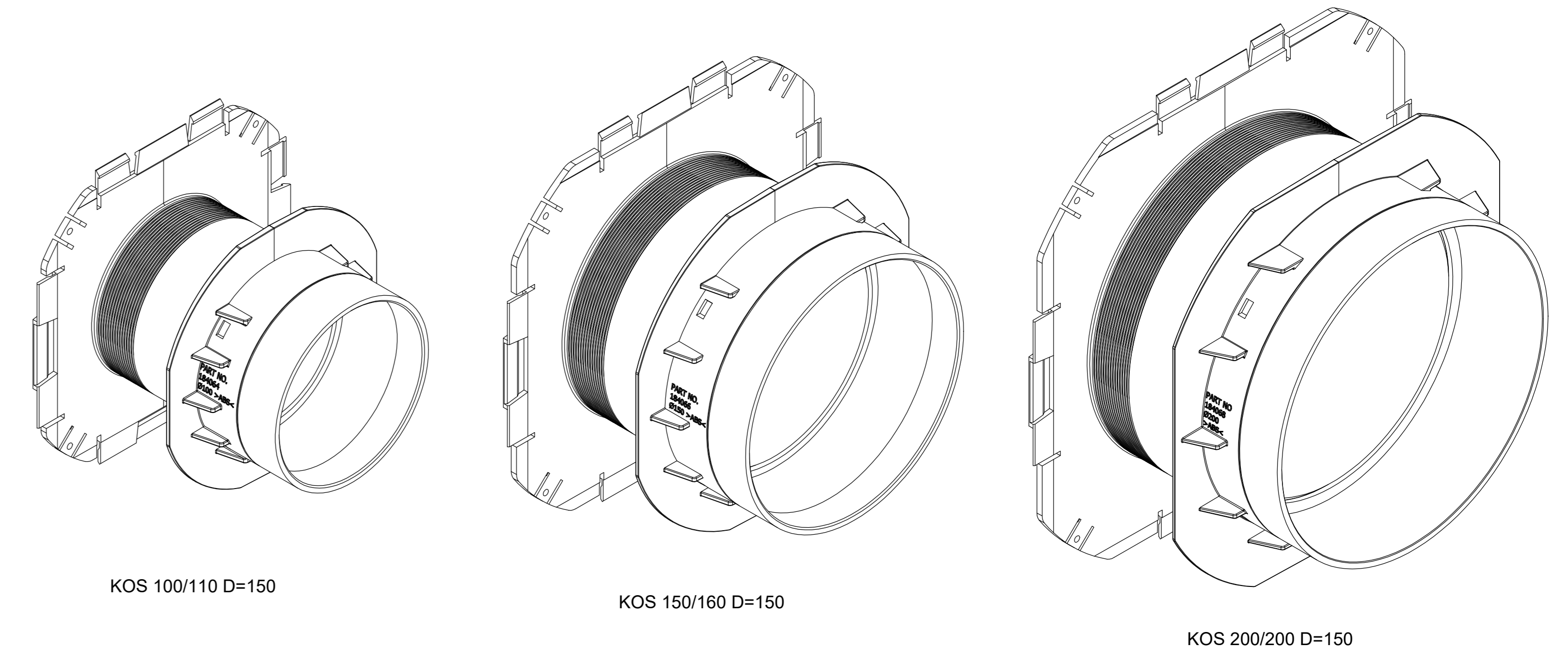
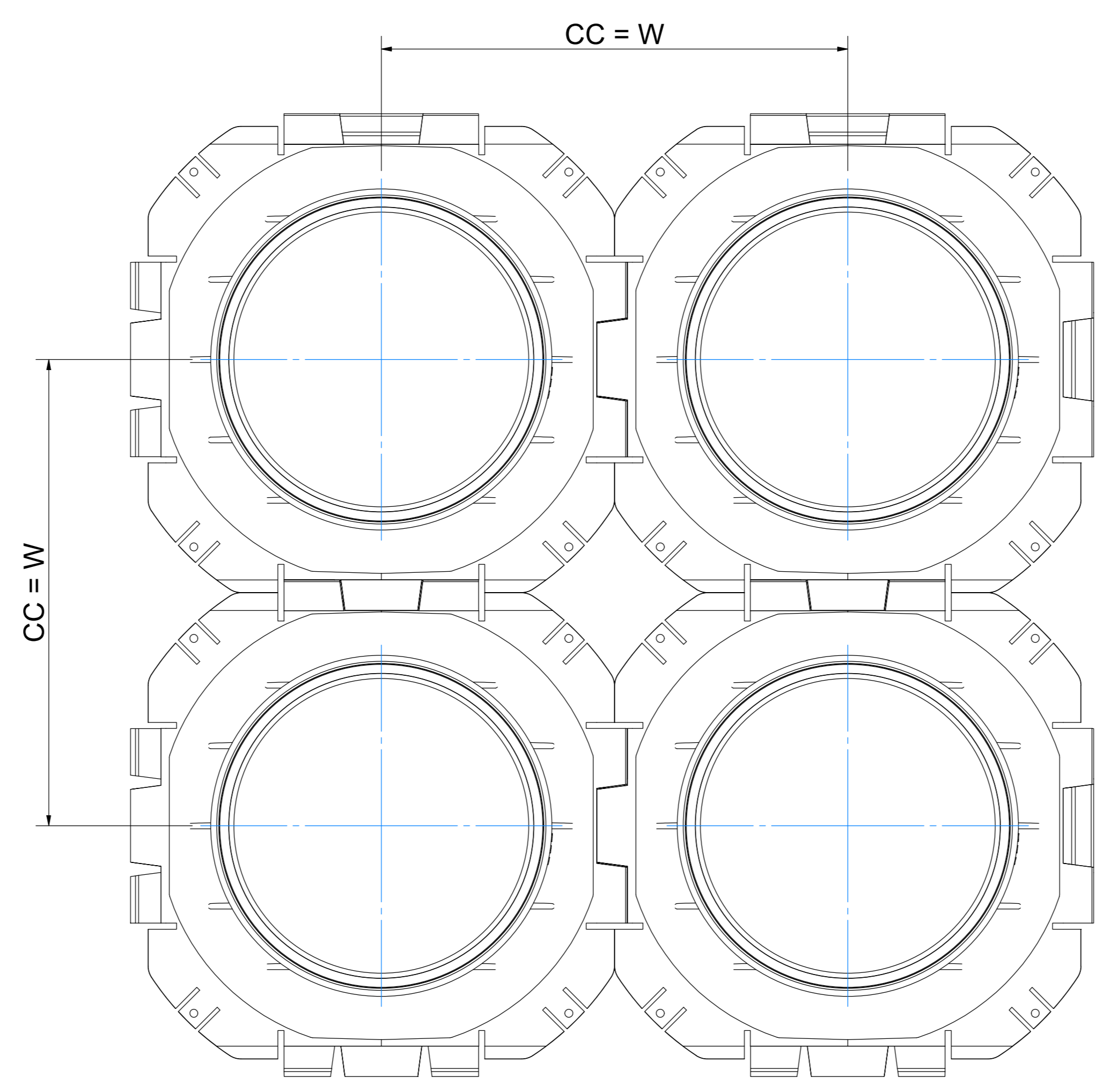
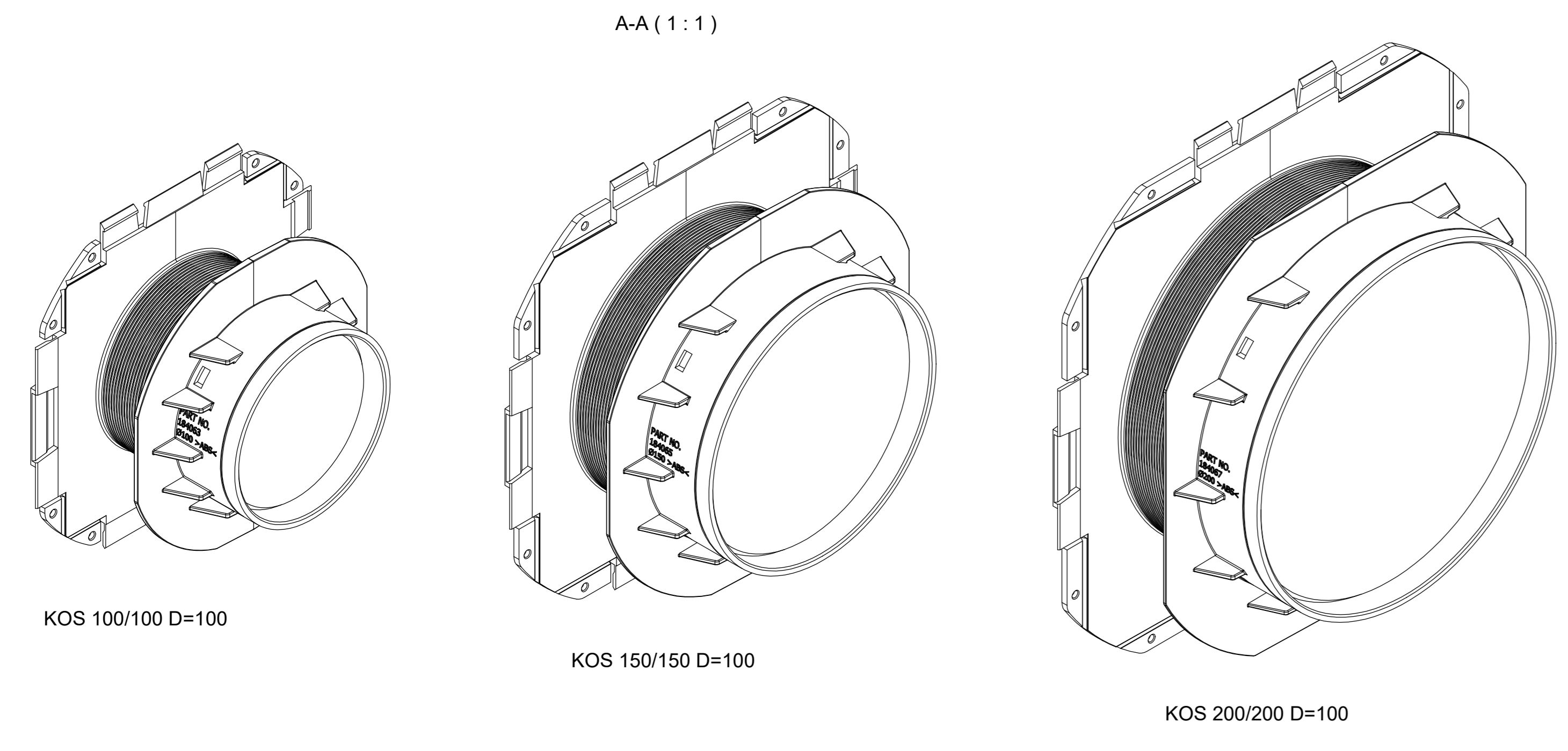
KOS VARIANTS					
SIZE	D (mm)	W (mm)	ØA (mm)	ØB (mm)	L (mm)
KOS 100/100 D=100	100	180	102	101	48
KOS 100/110 D=150	150	180	102	111	80
KOS 150/150 D=100	100	230	152	151	48
KOS 150/160 D=150	150	230	152	161	80
KOS 200/200 D=100	100	280	202	201	48
KOS 200/200 D=150	150	280	202	201	80



D=100 VARIANTS



D=150 VARIANTS



Rev	C	CLUSTER VIEW ADDED	2024-02-01	se-robus
Rev		Type of revision	Date	Sign

2	INSTALLATION INSTRUCTION	ABS	0.4
1	KOS	Specification	Weight
ITEM	QTY	Designation	Weight
1	1	KOS SLEEVES ASSEMBLY	0.3 kg
Rev		Issue date	1 / 1
Rev		Issue date	1 / 1
www.roxtec.com			Information drawing
S1531134			C