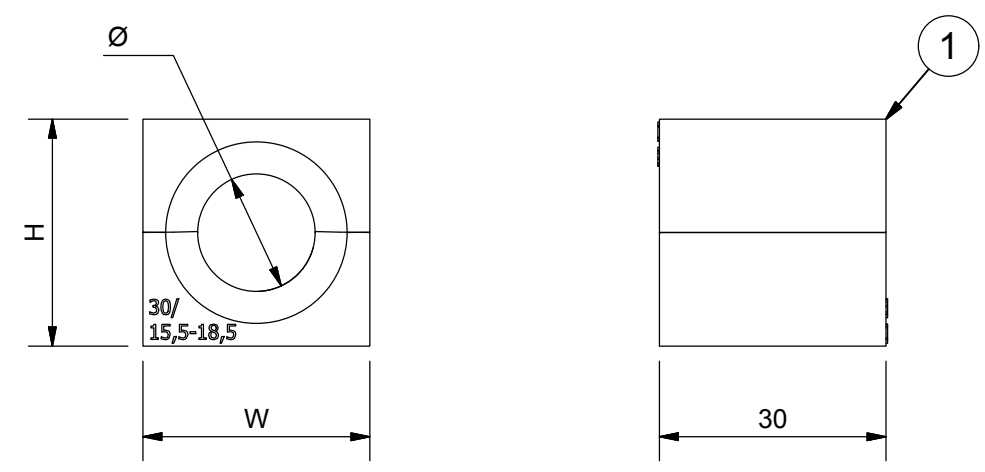


烙克赛克保留所有权利。未经授权严禁复制，使用以及向第三方泄露。

All rights reserved. Unauthorized reproduction, use or disclosure to third parties is strictly forbidden.

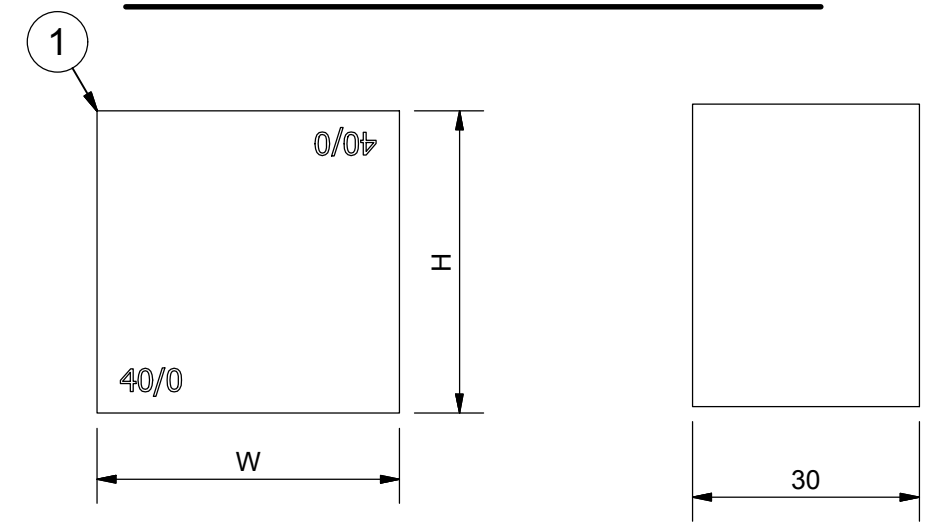
ART.NR.	TYPE	H (MM)	W (MM)	Ø (mm)	Ømax. (MM)	WEIGHT (KG)
177074	CRF 15/3-4	15	15	3	4	0,01
177075	CRF 15/4-5	15	15	4	5	0,01
177076	CRF 15/5-6	15	15	5	6	0,01
177077	CRF 15/6-7	15	15	6	7	0,01
174769	CRF 20/2,4-3,4	20	20	2,4	3,4	0,02
174770	CRF 20/3-4	20	20	3	4	0,02
174771	CRF 20/4-5	20	20	4	5	0,02
174772	CRF 20/5-6	20	20	5	6	0,02
174773	CRF 20/6-8	20	20	6	8	0,01
174774	CRF 20/8-10	20	20	8	10	0,01
174775	CRF 30/8-11	30	30	8	11	0,04
174776	CRF 30/11-14	30	30	11	14	0,03
174777	CRF 30/12,5-15,5	30	30	12,5	15,5	0,03
174778	CRF 30/15,5-18,5	30	30	15,5	18,5	0,03
174765	CRF 40/16-19	40	40	16	19	0,06
174766	CRF 40/19-23	40	40	19	23	0,05
174768	CRF 40/22-26	40	40	22	26	0,05
174744	CRF 40/25-29	40	40	25	29	0,04
174779	CRF 60/26-30	60	60	26	30	0,13
174780	CRF 60/30-34	60	60	30	34	0,12
174781	CRF 60/34-38	60	60	34	38	0,11
174782	CRF 60/38-42	60	60	38	42	0,10

CRF MODULES



ART.NR.	TYPE	H (MM)	W (MM)	Weight (KG)
177982	CRF 15/0	15	15	0,01
174783	CRF 20/0	20	20	0,02
174784	CRF 30/0	30	30	0,04
174785	CRF 40/0	40	40	0,08
174786	CRF 60/0	60	60	0,17

SOLID MODULES



B	WEIGHT AND ART.NR. COLUMNS	2017-05-24	se-andrek
Rev	Type of revision	Date	Sign

1	-	RUBBER	ROXYLON HEFR
ITEM	QTY	Designation	Specification
General tolerance: ISO 2768-1/2-m/K EN ISO 13920-BF		Welded details: EN ISO 5817-B EN ISO 10042-B	General surface roughness: Ra 12,5
Designed by/date		2017-04-25	Latest save date: 2017-05-24 Format: A3 Scale: Sheet no: 1 / 1
		Title: RAILWAY MODULES CRF MODULES	
www.roxtec.com		Restricted due to: Information drawing	Drawing number: S1522186 Rev: B