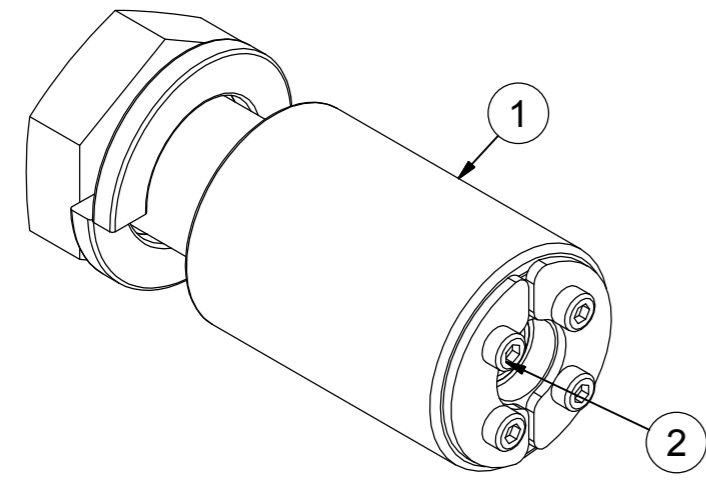
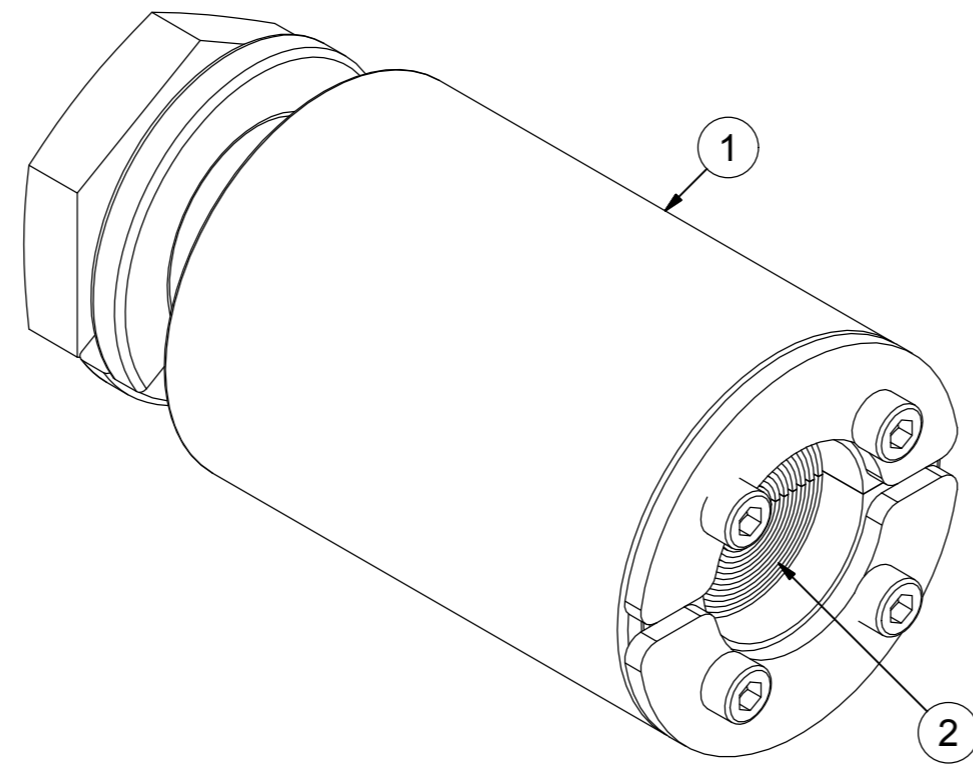


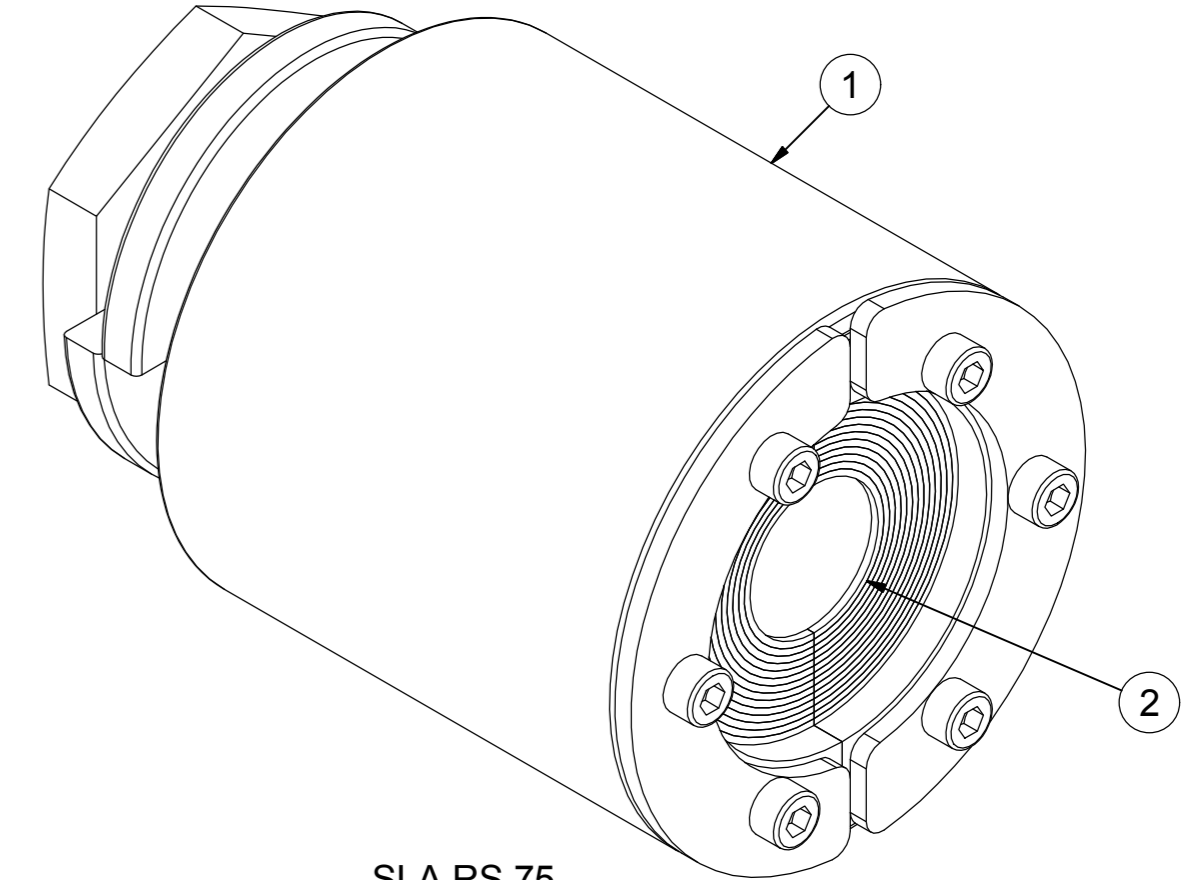
ACID PROOF STAINLESS STEEL
MILD STEEL - GALVANIZED



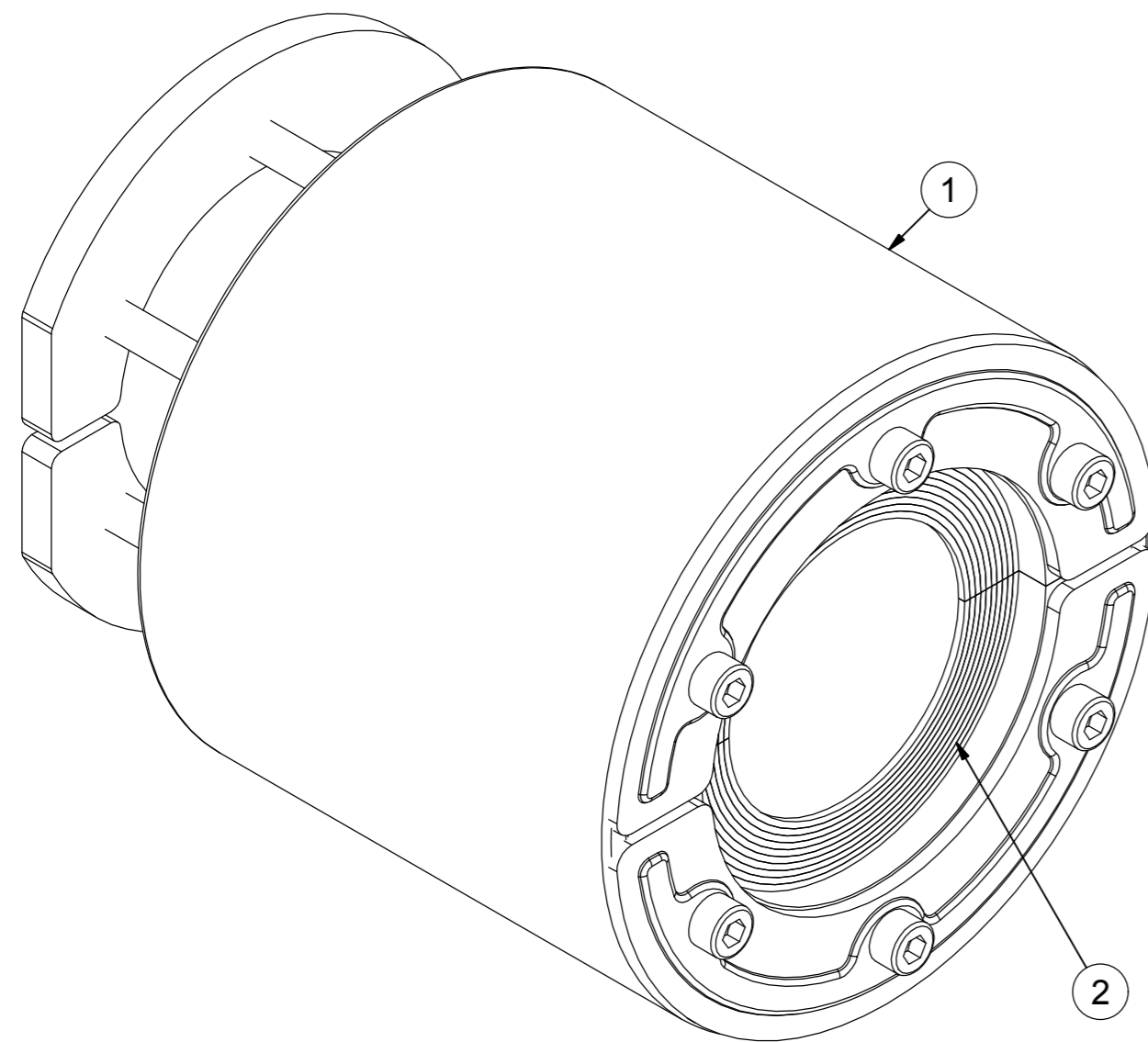
SLA RS 25



SLA RS 50



SLA RS 75

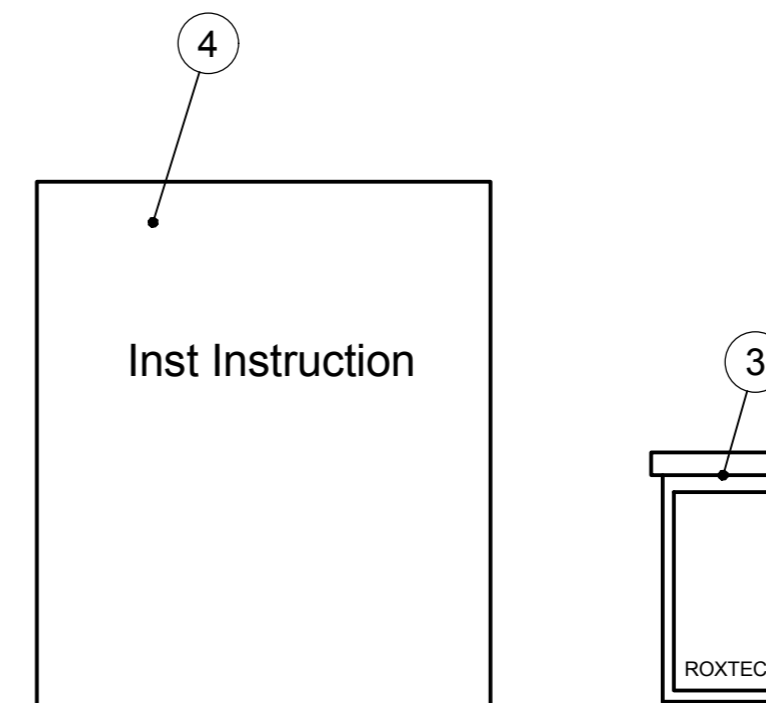


SLA RS 100

SEAL	RANGE
SLA RS 100	0+48-53
SLA RS 75	0+24-34
SLA RS 50	0+8-25
SLA RS 25	0+3.6-12

B

NOTE: THE TABLE SHOWS THE RANGE ALLOWED BY THE SLEEVE.
THE MULTIDIAMETER OF THE SEAL MIGHT MANAGE LARGER CABLES/PIPES THAN THE SLEEVE.



4	1	INSTALLATION INSTRUCTION																	
3	1	LUBRICANT	TALLOW																
2	1	RS SEAL	S1005507, S1005509, S1005510																
1	1	SLA SLEEVE	S1508276, S1508275																
ITEM	QTY	Designation			Specification					Weight									
General tolerance: ISO 2768-1/2-m/K EN ISO 13920-BF		Welded details: EN ISO 5817-B EN ISO 10042-B		General surface roughness: Ra 12.5		Designed by/date se-jenboh 2017-02-03		Latest save date 2017-06-05		Format A2	Scale	Sheet no 1 / 1	TotWeight N/A						
Title SLA KIT RS SEALS		Restricted due to Information drawing		Drawing number S1519368		Rev B		Projection method ⊕											
www.roxtec.com																			

B	SEAL NAMES CORRECTED	2017-06-05	se-jenboh
Rev	Type of revision	Date	Sign

格克赛克保留所有权利。未经授权严禁复制，使用以及向第三方泄漏。

All rights reserved. Unauthorized reproduction, use or disclosure to third parties is strictly forbidden.