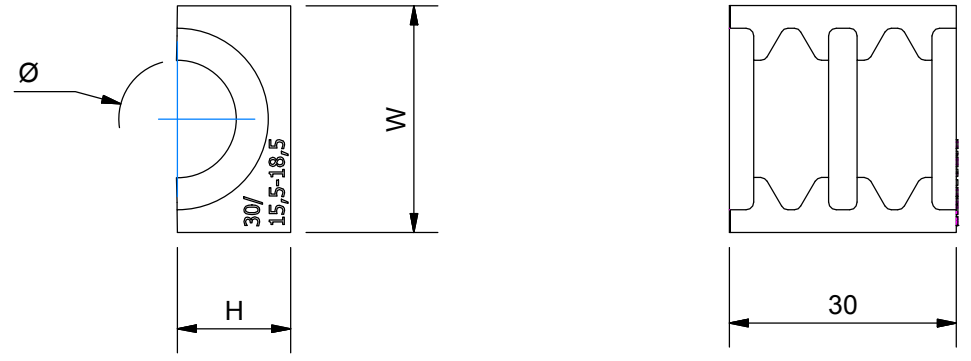


烙克赛克保留所有权利。未经授权严禁复制，使用以及向第三方泄漏。

All rights reserved. Unauthorized reproduction, use or disclosure to third parties is strictly forbidden.

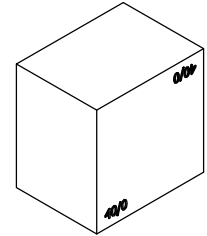
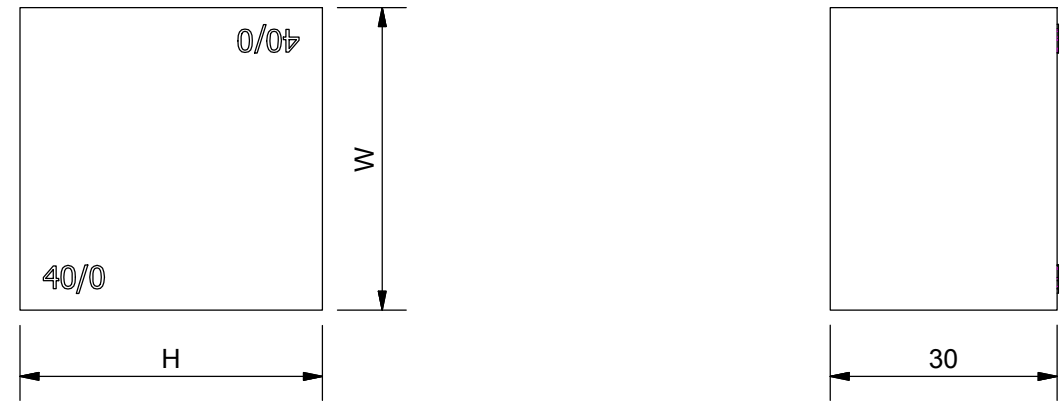
TYPE	H (mm)	W (mm)	Ø (mm)
15/3-4	7,5	15	3
15/4-5	7,5	15	4
15/5-6	7,5	15	5
15/6-7	7,5	15	6
20/2,4-3,4	10	20	2,4
20/3-4	10	20	3
20/4-5	10	20	4
20/5-6	10	20	5
20/6-8	10	20	6
20/8-10	10	20	8
30/8-11	15	30	8
30/11-14	15	30	11
30/12,5-15,5	15	30	12,5
30/15,5-18,5	15	30	15,5
40/16-19	20	40	16
40/19-23	20	40	19
40/22-26	20	40	22
40/25-29	20	40	25
60/26-30	30	60	26
60/30-34	30	60	30
60/34-38	30	60	34
60/38-42	30	60	38

# CRF MODULES


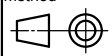


TYPE	H (mm)	W (mm)	Ø (mm)
15/0	15	15	-
20/0	20	20	-
30/0	30	30	-
40/0	40	40	-
60/0	60	60	-

# SOLID MODULES



B	SIZE 15	2017-03-21	se-andrek
Rev	Type of revision	Date	Sign

General tolerance: ISO 2768-1/2-m/K EN ISO 13920-BF	Welded details: EN ISO 5817-B EN ISO 10042-B	General surface roughness: Ra 12,5	Designed by/date se-andrek 2016-12-15	Latest save date 2017-03-21	Format A3	Scale	Sheet no 1 / 1	TotWeight N/A
 www.roxtec.com		Title RAILWAY MODULES CRF			Projection method 		Rev B	
		Restricted due to Information drawing			Drawing number S1518164			