

烙克赛克保留所有权利。未经授权严禁复制、使用以及向第三方泄露。

All rights reserved. Unauthorized reproduction, use or disclosure to third parties is strictly forbidden.

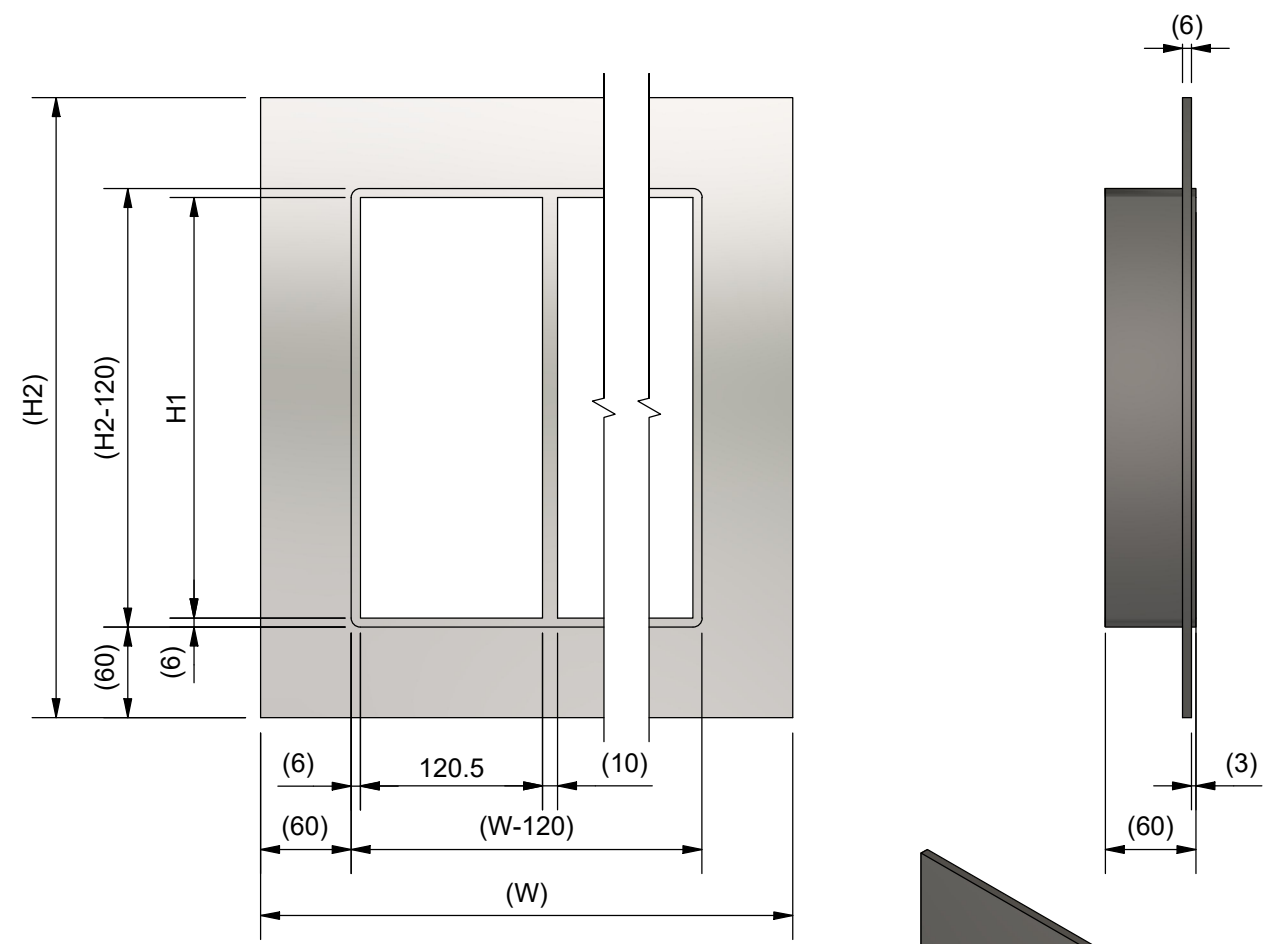
Rev 3.1

TYPE	H1 [mm]	H2 [mm]
G 2xN W Ex	101	233
G 4xN W Ex	159.5	291.5
G 6xN W Ex	218	350
G 8xN W Ex	278	410

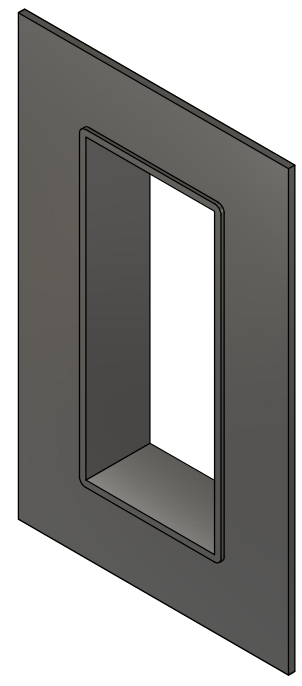
N	W [mm]
x1	252.5
x2	383
x3	513.5
x4	644
x5	774.5
x6	905
x7	1035.5
x8	1166
x9	1296.5
x10	1427

N: NUMBER OF FRAME OPENINGS

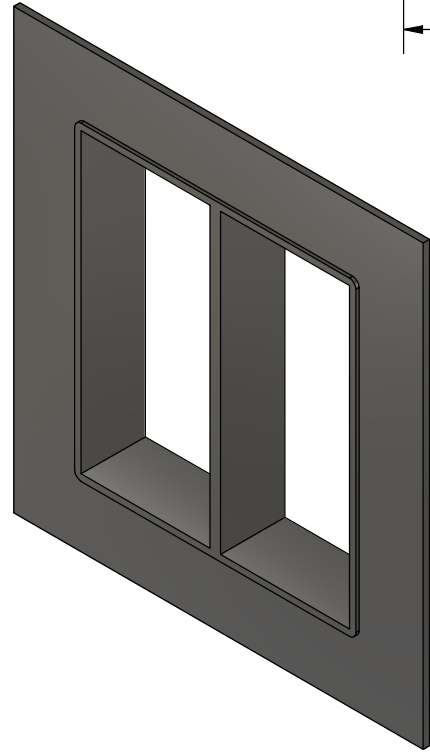
MATERIAL ACID PROOF STAINLESS STEEL
MATERIAL MILD STEEL
PRIMED (TRANSPORT PROTECTION)



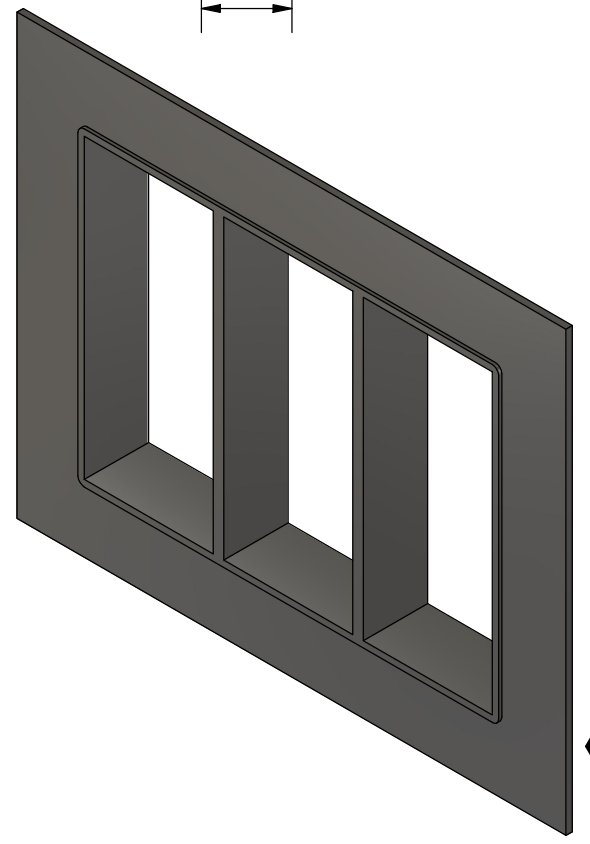
G 8x1 W Ex
N=1




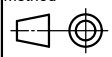
G 8x2 W Ex
N=2



G 8x3 W Ex
N=3



C	TYPE NAMES CLARIFIED	2024-11-07	se-marfre
Rev	Type of revision	Date	Sign

General tolerances used for manufacturing shown in document DOC-002180		Designed by/date xx-benlun 2016-04-20	Latest save date 2024-11-07	Format A3	Scale	Sheet no 1 / 1	TotWeight
 www.roxtec.com		Title G...W Ex FRAME SINGLE AND COMBINATION FRAME				Projection method 	
		Restricted due to Information drawing			Drawing number S1511958		Rev C

Information drawings show general design and nominal dimensions if not else stated