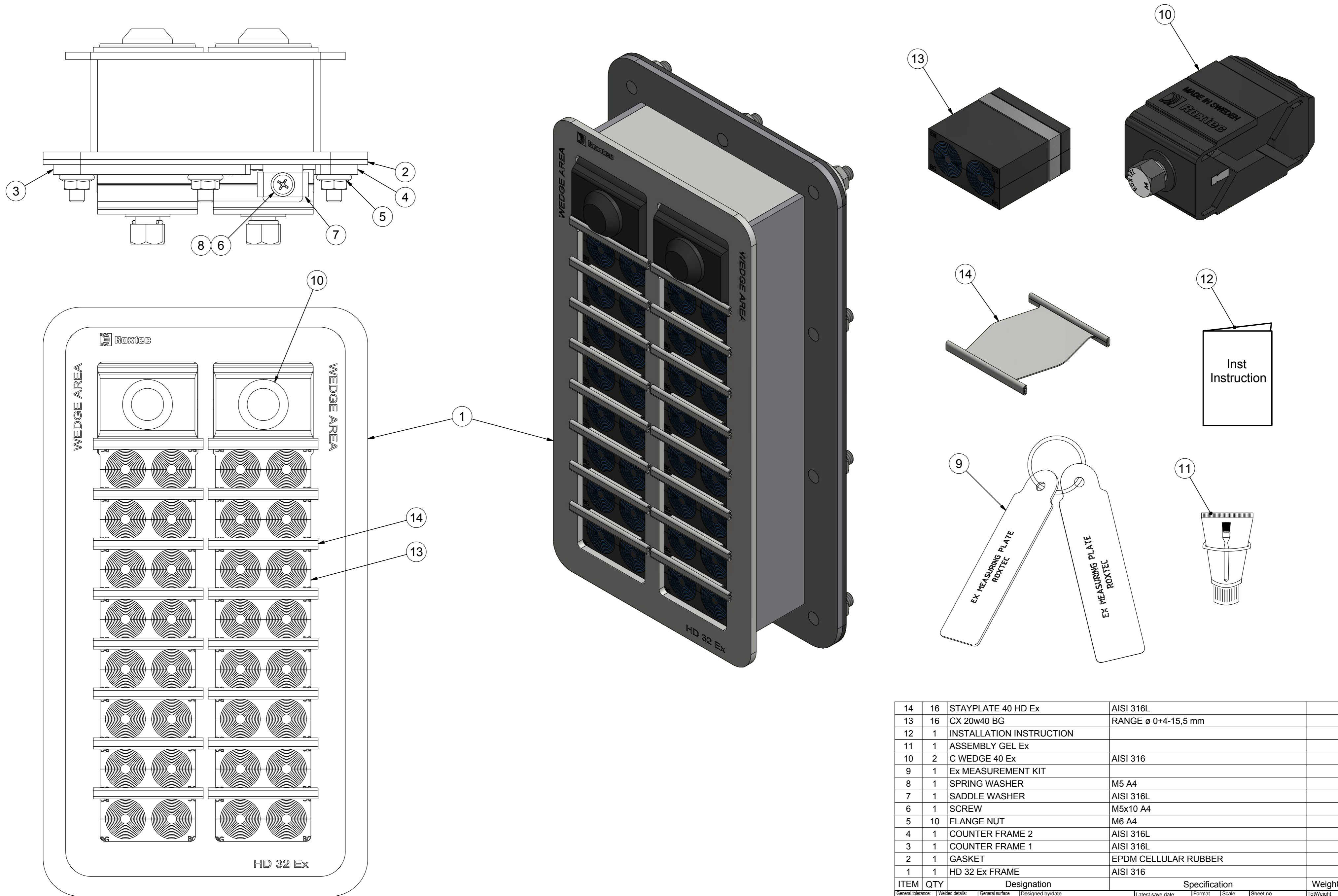


格克赛克保留所有权利。未经授权严禁复制，使用以及向第三方泄漏。

All rights reserved. Unauthorized reproduction, use or disclosure to third parties is strictly forbidden.



ITEM	QTY	Designation	Specification	Weight
14	16	STAYPLATE 40 HD Ex	AISI 316L	
13	16	CX 20w40 BG	RANGE $\varnothing$ 0+4-15,5 mm	
12	1	INSTALLATION INSTRUCTION		
11	1	ASSEMBLY GEL Ex		
10	2	C WEDGE 40 Ex	AISI 316	
9	1	Ex MEASUREMENT KIT		
8	1	SPRING WASHER	M5 A4	
7	1	SADDLE WASHER	AISI 316L	
6	1	SCREW	M5x10 A4	
5	10	FLANGE NUT	M6 A4	
4	1	COUNTER FRAME 2	AISI 316L	
3	1	COUNTER FRAME 1	AISI 316L	
2	1	GASKET	EPDM CELLULAR RUBBER	
1	1	HD 32 Ex FRAME	AISI 316	

General tolerance:		Welded details:		General surface roughness:		Designed by/date:		Latest save date:		Format:		Scale:		Sheet no:		TotWeight:	
ISO 2768-1/2-m/K		EN ISO 5817-B		EN ISO 13920-BF		se-danstr 2016-02-01		2016-04-22		A2		1 / 1		1 / 1		N/A	
Title:		Restricted due to:		Drawing number:		Rev:		Projection method:									
Roxtec		www.roxtec.com		HD 32/32 BG Ex ASSEMBLY KIT		Information drawing		S1509533		B							

Rev	Type of revision	Date	Sign
B		2016-04-22	se-danstr