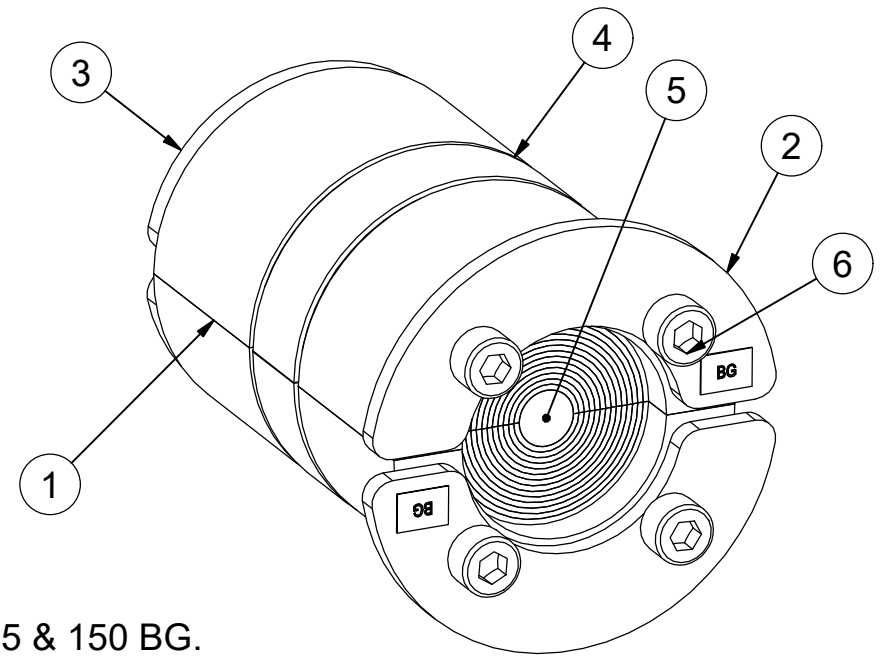
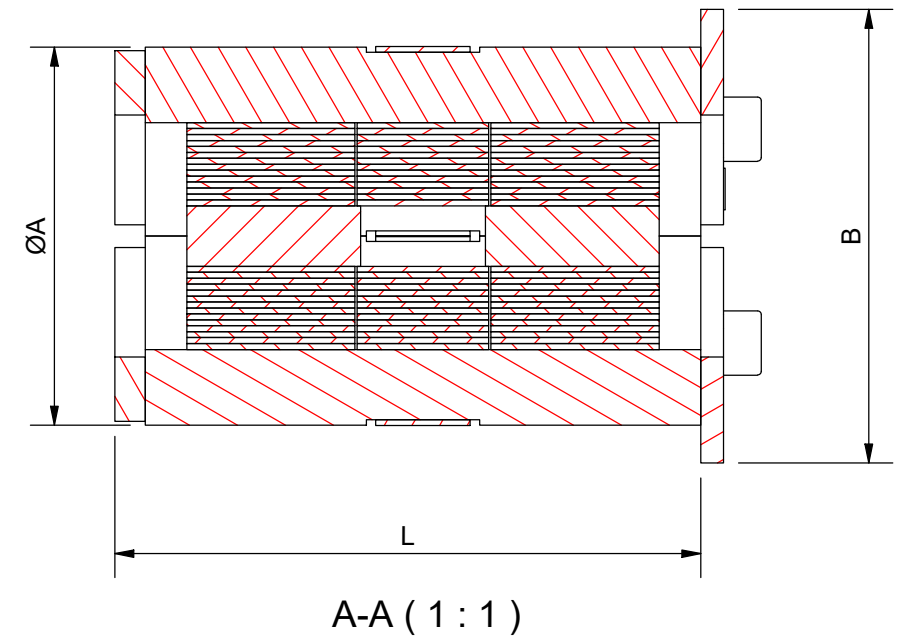
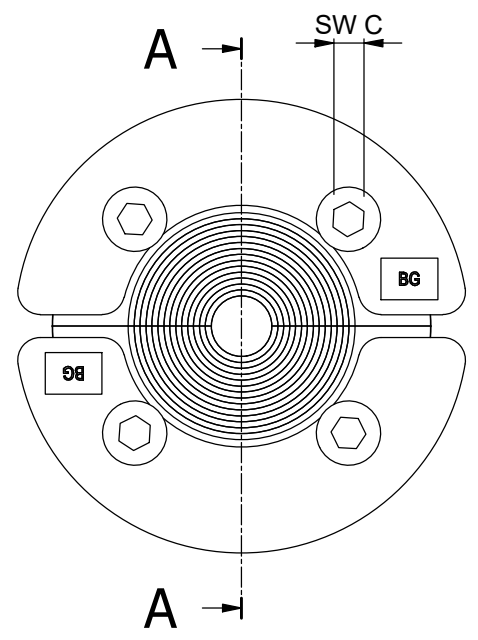


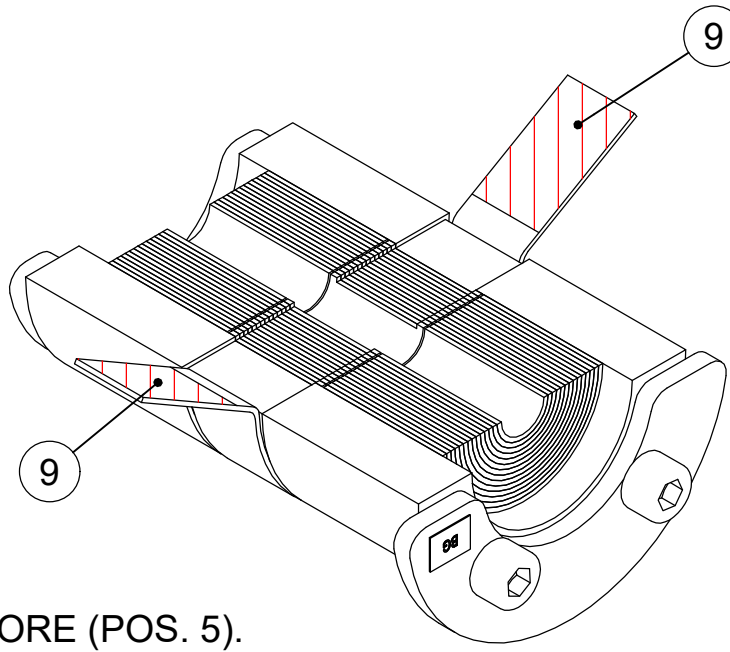
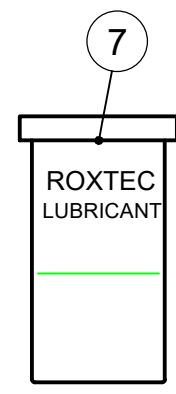
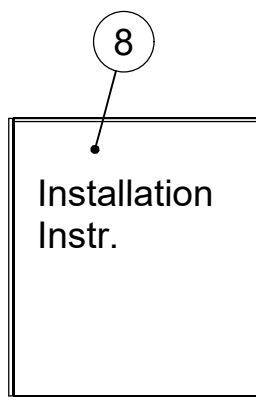
烙克赛克保留所有权利。未经授权严禁复制，使用以及向第三方泄漏。

Rev 2.0 All rights reserved. Unauthorized reproduction, use or disclosure to third parties is strictly forbidden.

RS BG							
SEAL	A	B	C	L	N	RANGE Ø	BRAID CU SQ MM
RS 25 BG	25	32	2,5	38,5	4	0+3.6-12	13
RS 31 BG	31	37	2,5	38,5	4	0+4-17	13
RS 43 BG	43	53	4	77	4	0+4-23	13
RS 50 BG	50	60	4	77	4	0+8-30	24
RS 68 BG*	68	78	4	77	4	0+26-48	42
RS 75 BG*	75	85	4	77	6	0+24-54	42
RS 100 BG*	100	110	4	77	6	0+48-70	42
RS 125 BG*	125	145	5	78	6	0+66-98	42
RS 150 BG WOC ONLY*	150	170	5	80	8	93-119	42



9 ONLY VALID FOR THE RS 125 & 150 BG.



NOTE *
WOC VERSION IS WITHOUT CENTER CORE (POS. 5).
THE RANGE OF THE SEAL INDICATES THE SMALEST POSSIBLE DIAMETER OF THE CABLE ARMOR TO THE LARGEST POSSIBLE DIAMETER OF THE CABLE JACKET.

ITEM	QTY	Designation	Specification	Weight
9	4	DOUBLE ADHESIVE TAPE	ONLY FOR SIZE 125 AND 150	
8	1	INSTALLATION INSTR.		
7	1	LUBRICANT		
6	N	SCREW	ACCORDING TO THE TABLE (N)	
5	2	CORE		
4	2	BRAID	COPPER/TIN-PLATED	
3	2	REAR FITTING	RS AISI316	
2	2	FRONT FITTING	RS AISI316	
1	2	RUBBER PROFILE	RS	

E	BRAID CU SQ MM UPD. FOR RS 50 BG	2020-08-25	se-mikgru
Rev	Type of revision	Date	Sign

General tolerances used for manufacturing shown in document DOC-002180		Designed by/date se-almah 2015-12-15	Latest save date 2020-09-04	Format A3	Scale	Sheet no 1 / 1	TotWeight 0,3 kg
 www.roxtec.com		Title RS BG RS 25-150 BG			Projection method 		Rev E
		Restricted due to Information drawing		Drawing number S1508686			

Information drawings show general design and nominal dimensions if not else stated