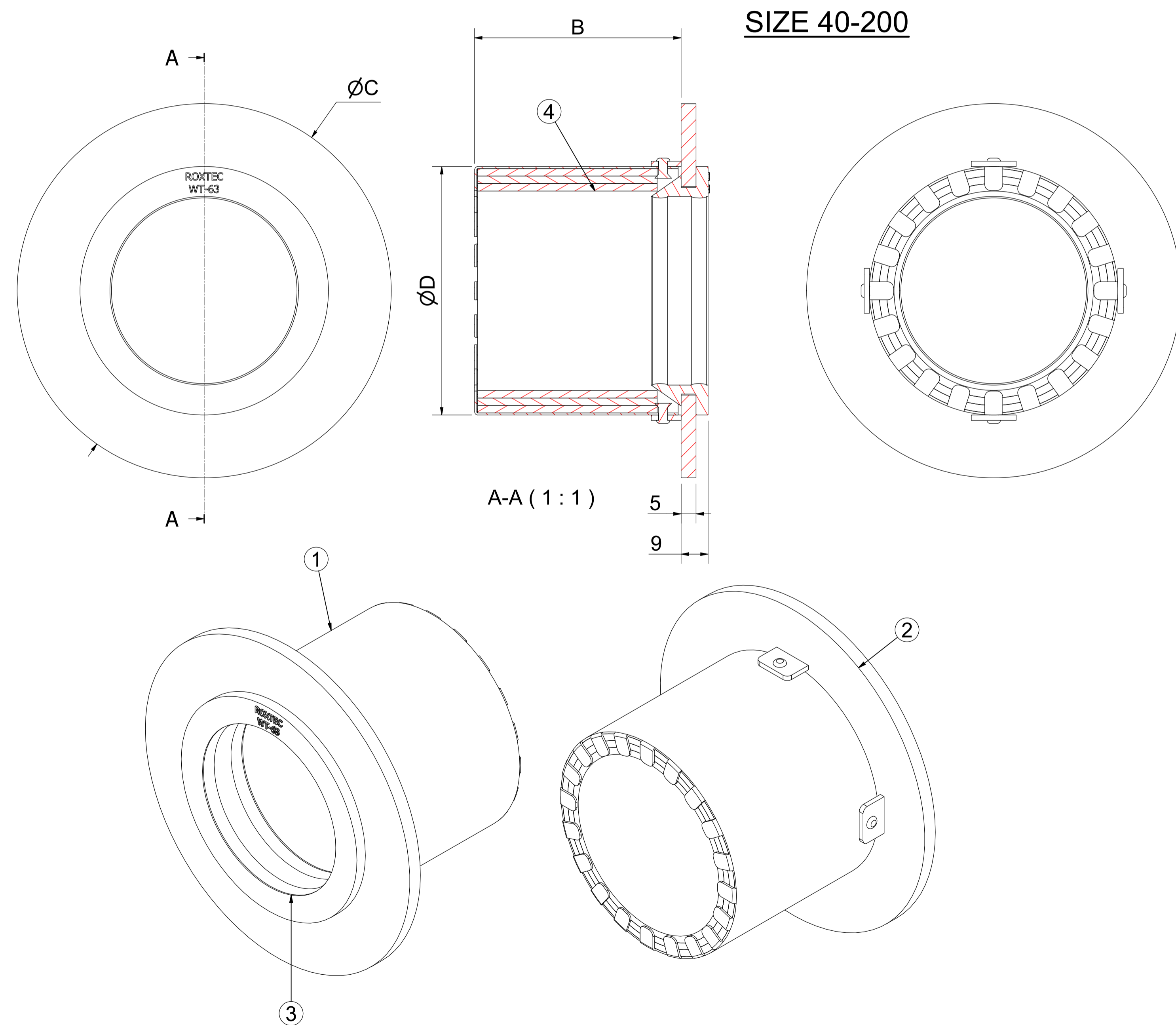
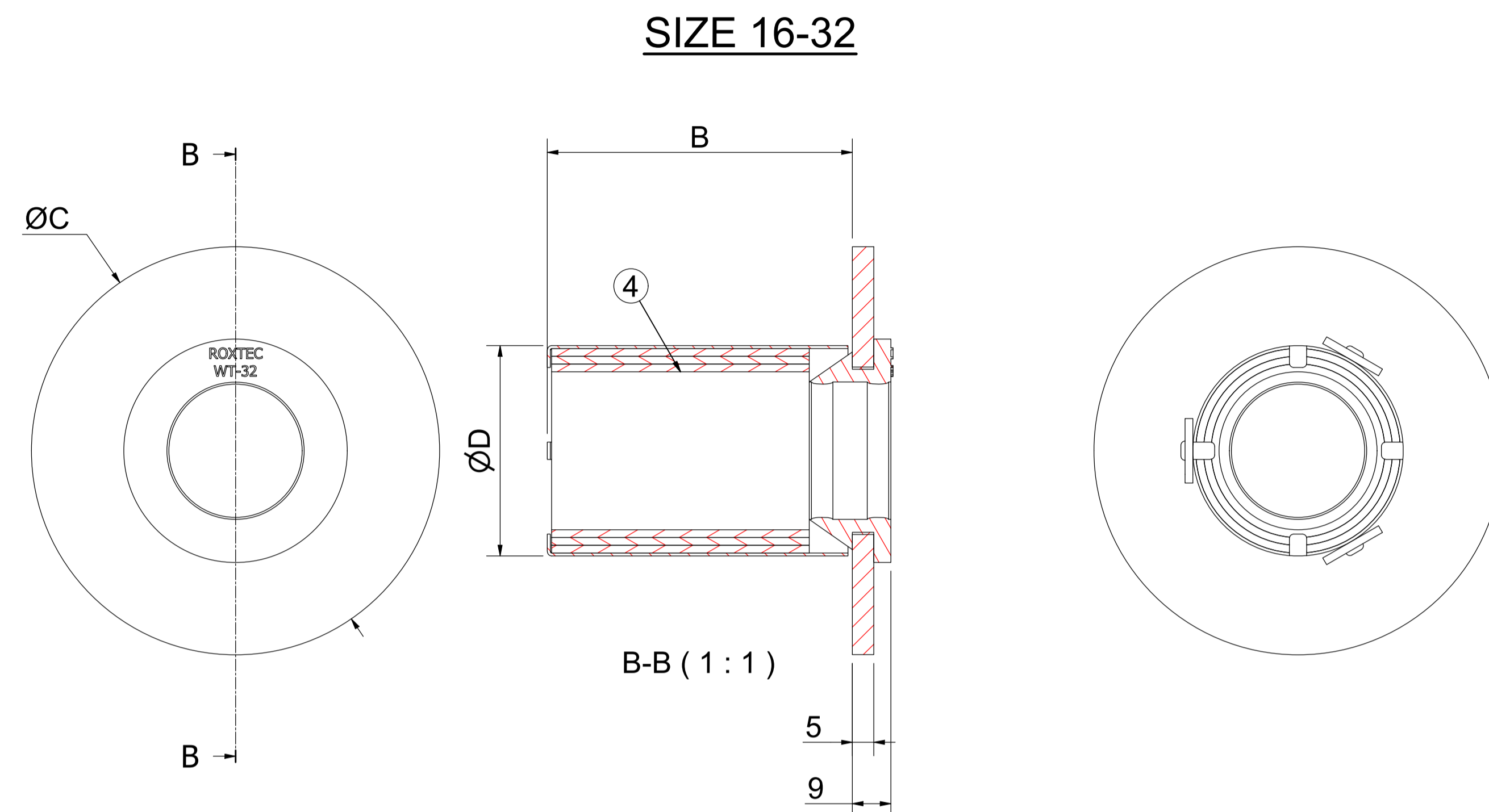


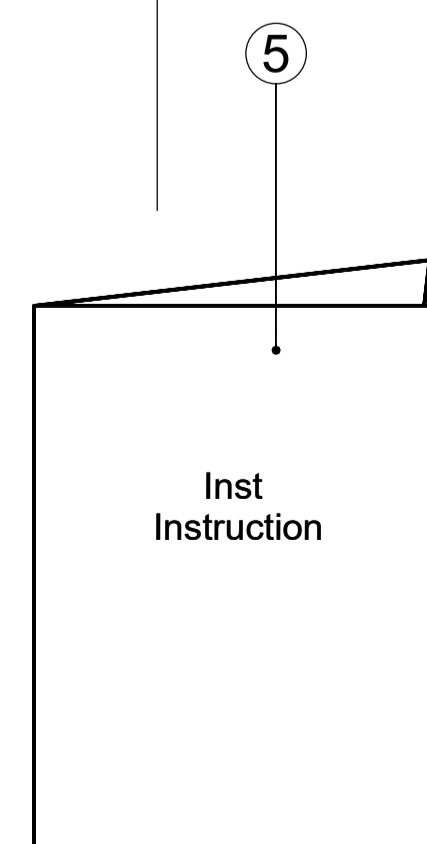
SIZE	FOR PIPE Ø (mm)	B (mm)	C (mm)	D (mm)
SLEEV-IT WT-MAR16M ALU	16	71	75	30,9
SLEEV-IT WT-MAR20M ALU	20	71	80	36,4
SLEEV-IT WT-MAR25M ALU	25	71	85	42,9
SLEEV-IT WT-MAR32M ALU	32	71	95	49
SLEEV-IT WT-MAR40M ALU	40	69	100	56
SLEEV-IT WT-MAR50M ALU (1.5")	48,3	69	110	64
SLEEV-IT WT-MAR50M ALU	50	69	110	66
SLEEV-IT WT-MAR60M ALU (2")	60,3	69	125	80
SLEEV-IT WT-MAR63M ALU	63	69	125	83
SLEEV-IT WT-MAR75M ALU	75	69	145	100
SLEEV-IT WT-MAR90M ALU (3")	88,9	69	160	114
SLEEV-IT WT-MAR90M ALU	90	69	160	115
SLEEV-IT WT-MAR110M ALU	110	69	185	140
SLEEV-IT WT-MAR115M ALU (4")	114,3	69	190	145
SLEEV-IT WT-MAR125M ALU	125	69	200	155
SLEEV-IT WT-MAR140M ALU	140	69	220	175
SLEEV-IT WT-MAR160M ALU	160	69	240	195
SLEEV-IT WT-MAR169M ALU (6")	168,3	69	250	204
SLEEV-IT WT-MAR200M ALU	200	69	290	245



SIZE 40-200



SIZE 16-32



NOTE:
 BLACK GROMMET METRIC SIZE
 RED GROMMET INCH SIZE

ITEM	QTY	Designation	Specification	Weight
5	1	INST. INSTRUCTION		
4	1	INTUMESCENT MATERIAL		
3	1	GROMMET	EPDM (SEE NOTE)	
2	1	FLANGE	ALUMINIUM	
1	1	COLLAR	STAINLESS STEEL	

ITEM	QTY	Designation	Specification	Weight
5	1	INST. INSTRUCTION		
4	1	INTUMESCENT MATERIAL		
3	1	GROMMET	EPDM (SEE NOTE)	
2	1	FLANGE	ALUMINIUM	
1	1	COLLAR	STAINLESS STEEL	

General tolerances used for manufacturing (shown in document DCC-002-10)	Designed by/date	Latest save date	Format	Scale	Sheet no	Total weight
	xxx-benlun 2015-11-04	2020-11-10	A1		1 / 1	N/A

Rev	Type of revision	Date	Sign
E	TABLE UPDATED	2020-11-10	se-jenboh

Rev	Type of revision	Date	Sign
E	TABLE UPDATED	2020-11-10	se-jenboh