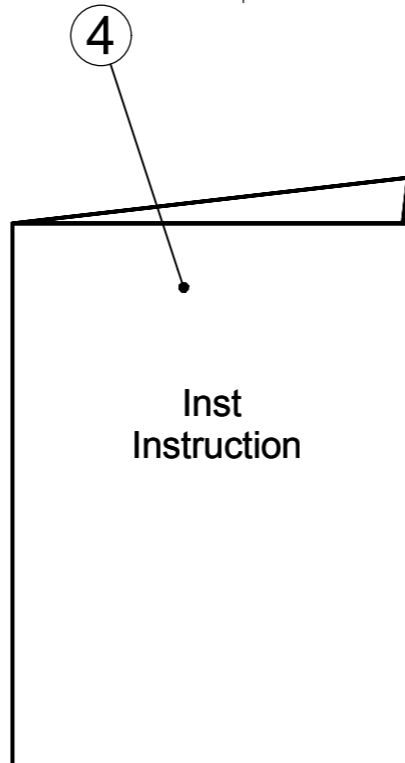
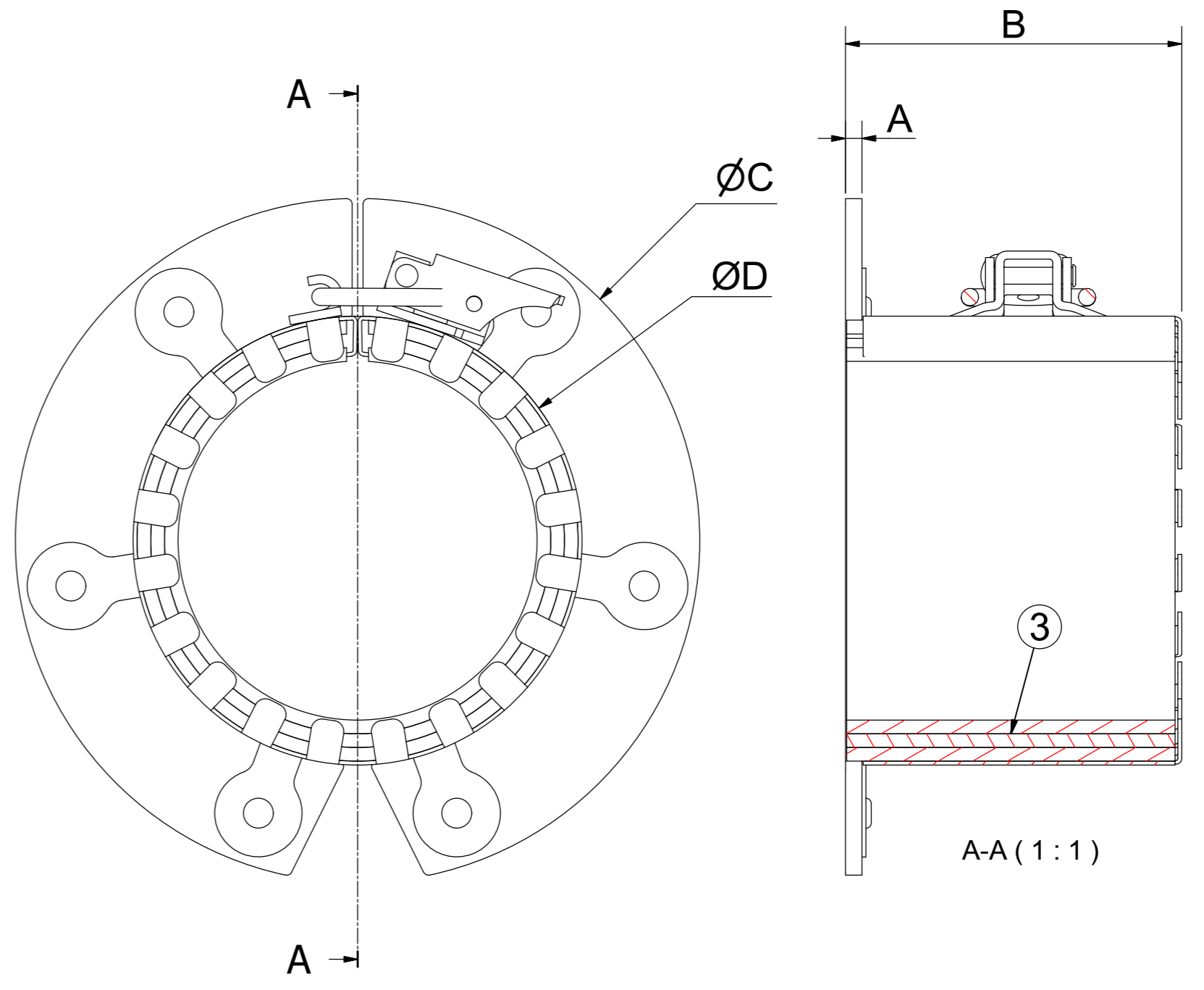
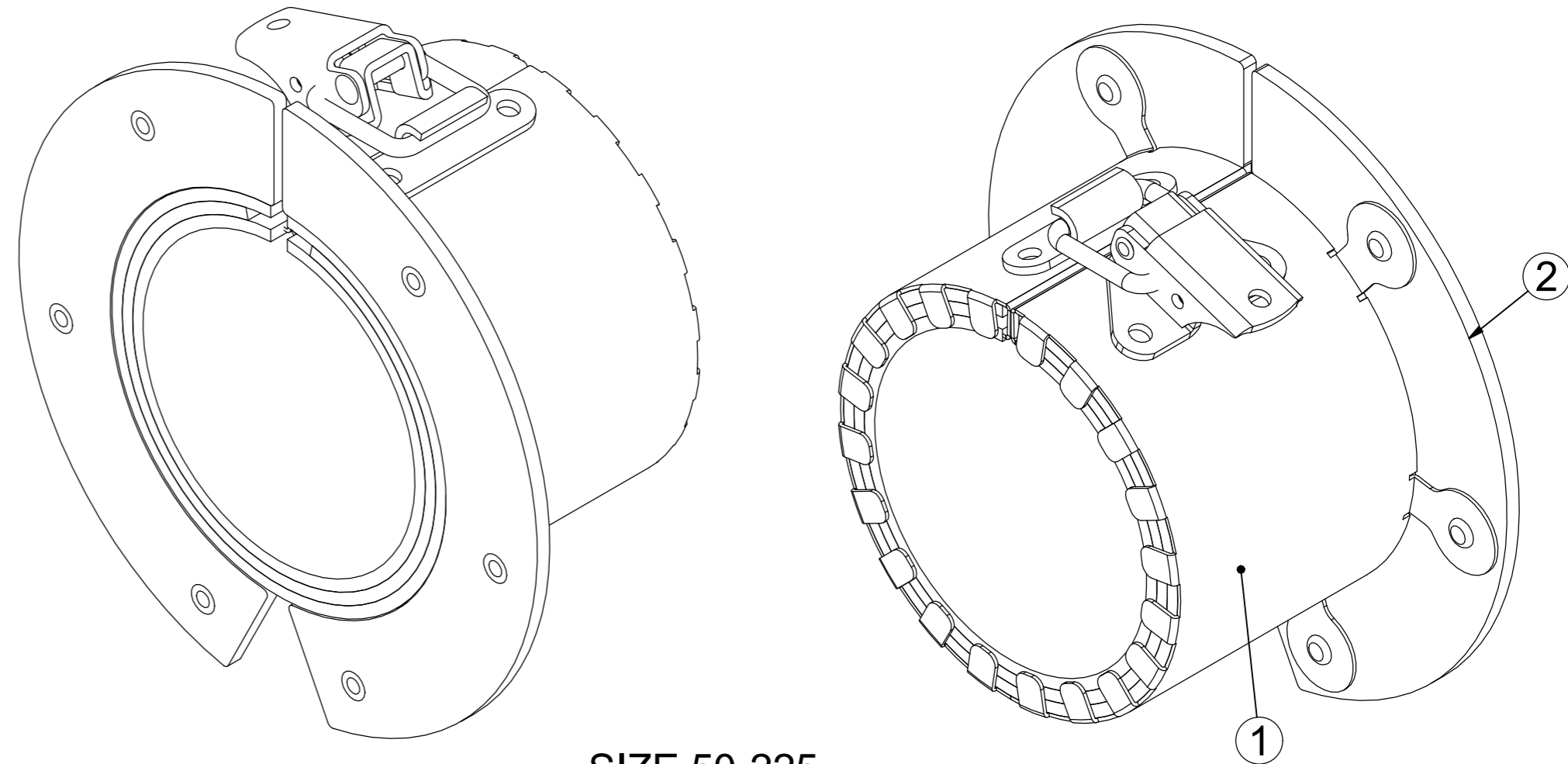
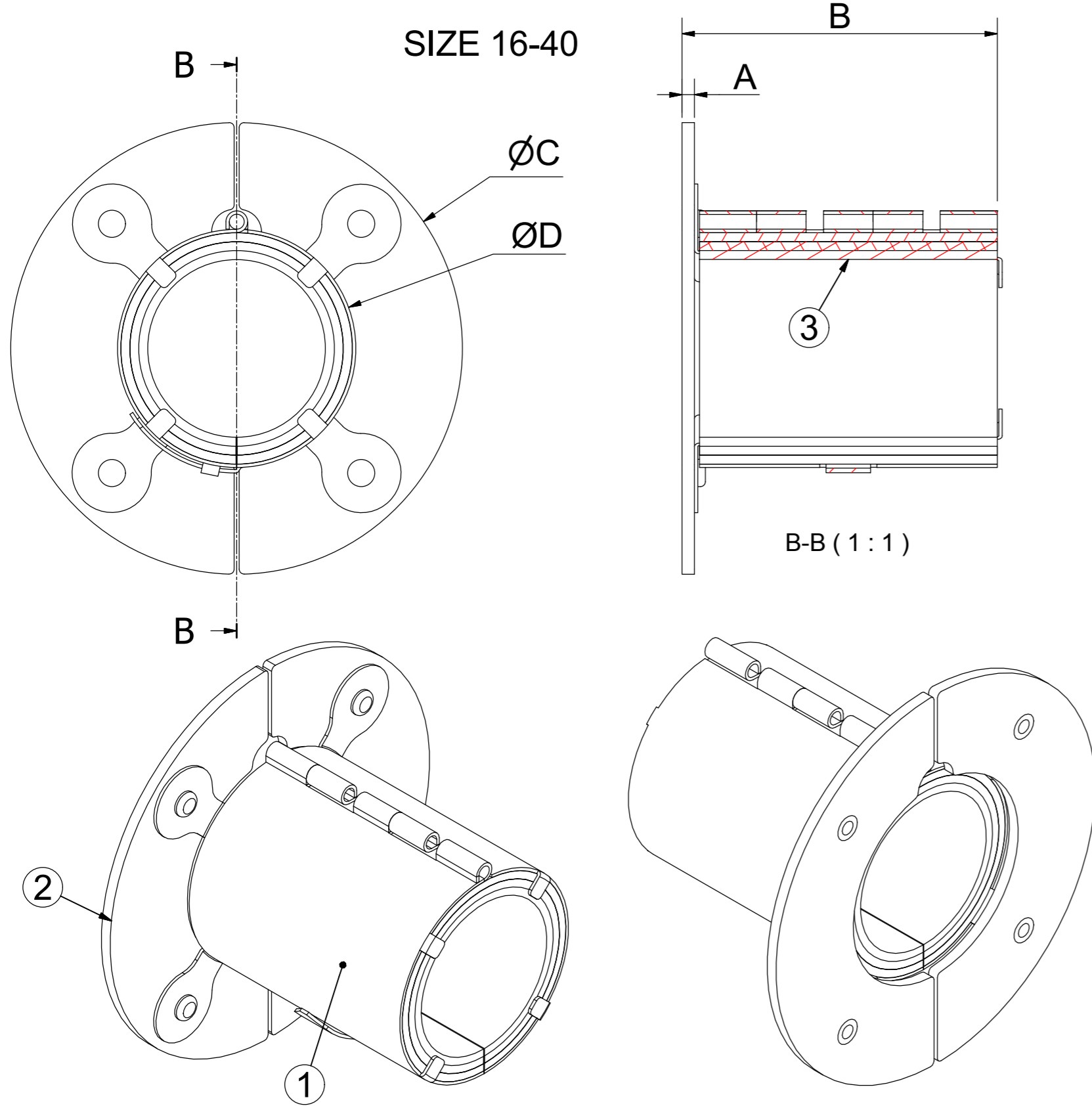


格克赛克保留所有权利。未经授权严禁复制，使用以及向第三方泄露。

All rights reserved. Unauthorized reproduction, use or disclosure to third parties is strictly forbidden.

SIZE	FOR PIPE P (mm)	A (mm)	B (mm)	C (mm)	D (mm)
SLEEV-IT FC-MAR16M ALU	16	2,5	63,5	72	28
SLEEV-IT FC-MAR20M ALU	20	2,5	63,5	80,5	36,5
SLEEV-IT FC-MAR25M ALU	25	2,5	63,5	85,5	41,5
SLEEV-IT FC-MAR32M ALU	32	2,5	63,5	92	48
SLEEV-IT FC-MAR40M ALU	40	2,5	63,5	100,5	56,5
SLEEV-IT FC-MAR50M ALU (1.5")	48,3	3	61,4	114	69
SLEEV-IT FC-MAR60M ALU (2")	60,3	3	61,4	127	82
SLEEV-IT FC-MAR63M ALU	63	3	61,4	130	85
SLEEV-IT FC-MAR66M ALU	66	3	61,4	138	93
SLEEV-IT FC-MAR75M ALU	75	3	61,4	147	102
SLEEV-IT FC-MAR82M ALU	82	3	61,4	154	109
SLEEV-IT FC-MAR90M ALU (3")	88,9	3	61,4	163	118
SLEEV-IT FC-MAR110M ALU	110	3	61,4	188	143
SLEEV-IT FC-MAR115M ALU (4")	114,3	3	61,4	192	148
SLEEV-IT FC-MAR125M ALU	125	3	61,4	203	158
SLEEV-IT FC-MAR140M ALU	140	3	61,4	223	178
SLEEV-IT FC-MAR160M ALU	160	3	61,4	243	198
SLEEV-IT FC-MAR169M ALU (6")	168,3	3	61,4	252	207
SLEEV-IT FC-MAR200M ALU	200	3	61,4	293	248
SLEEV-IT FC-MAR219M ALU (8")	219,1	3	61,4	325	280
SLEEV-IT FC-MAR225M ALU	225	3	61,4	331	286



4	1	INST. INSTRUCTION							
3	1	INTUMESCENT MATERIAL	GRAPHITE / ELASTOMERIC						
2	1	FLANGE	ALUMINIUM						
1	1	COLLAR	STAINLESS STEEL						
ITEM	QTY	Designation			Specification			Weight	
General tolerance: ISO 2768-1/2-m/K		Welded details: EN ISO 5817-B		General surface roughness: Ra 12.5		Designed by/date: xx-benlun 2015-11-04		Latest save date: 2016-05-26	
EN ISO 13920-BF		EN ISO 10042-B		Format: A2		Scale: 1 / 1		Sheet no: 1 / 1	
Title: SLEEV IT FC ALU FC 16-225 ALU		Restricted due to: Information drawing		Drawing number: S1507771		Rev: B		TotWeight: N/A	
www.roxtec.com		Projection method: 1st angle							

B	INSTRUCTION ADDED.	2016-05-24	se-jenboh
Rev	Type of revision	Date	Sign