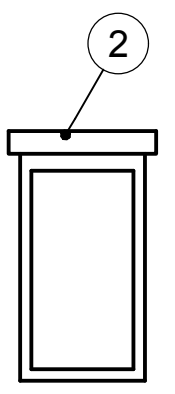
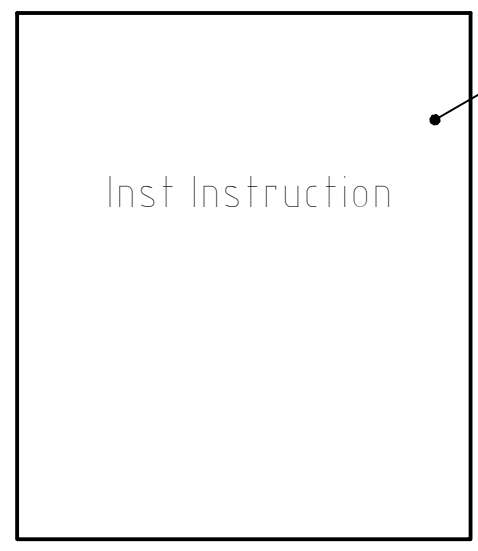
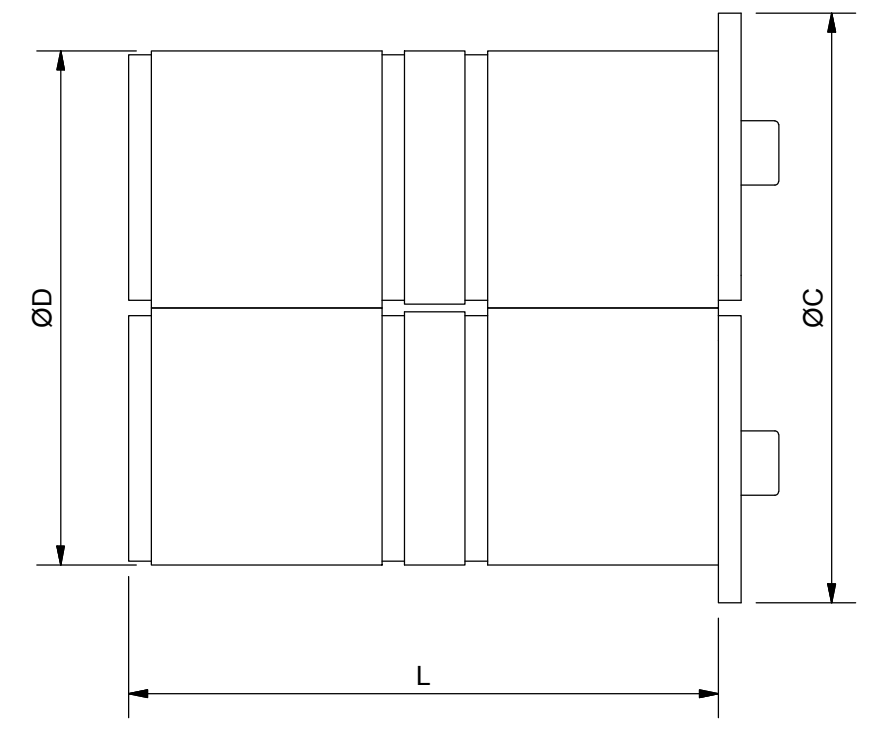
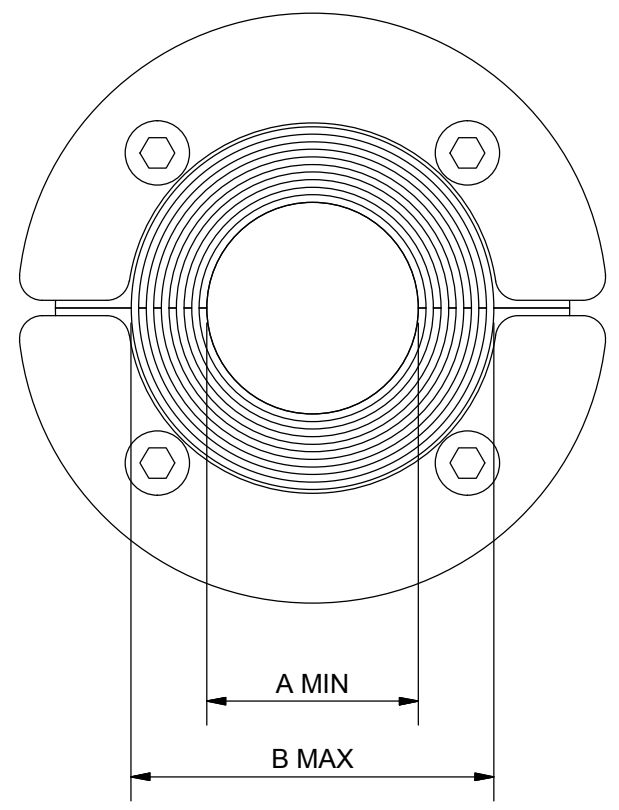
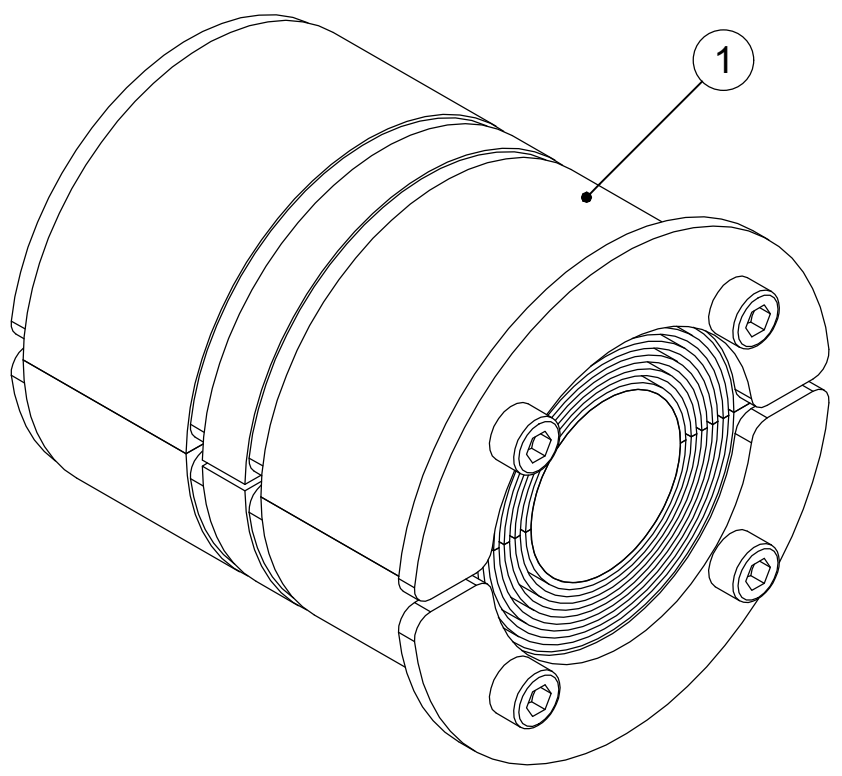


烙克赛克保留所有权利。未经授权严禁复制，使用以及向第三方泄漏。

All rights reserved. Unauthorized reproduction, use or disclosure to third parties is strictly forbidden.

ROXTEC PPS/S F+WT KIT					
SEAL	Ø A (mm)	Ø B (mm)	Ø C (mm)	Ø D (mm)	L (mm)
RS PPS/S F+WT 43 AISI 316	4	23	53	43	78
RS PPS/S F+WT 50 AISI 316	8	30	60	50	78
RS PPS/S F+WT 68 AISI 316	26	48	78	68	78
RS PPS/S F+WT 75 AISI 316	48	54	85	75	78
RS PPS/S F+WT 100 AISI 316 WOC	48	70	110	100	83
RS PPS/S F+WT 125 AISI 316 WOC	66	98	145	125	83
RS PPS/S F+WT 150 AISI 316 WOC	93	119	170	150	83

NOTE: WOC VERSION IS WITHOUT CORE



3	1	INSTALLATION INSTRUCTION	
2	1	LUBRICANT	25ML
1	2	RS PPS/S F+WT SEAL	

ITEM	QTY	Designation	Specification	Weight
General tolerance:		Welded details:	General surface roughness:	Designed by/date
ISO 2768-1/2-m/K		EN ISO 5817-B	Ra 12.5	se-jenboh 2015-02-17
EN ISO 13920-BF		EN ISO 10042-B		Approved by/date
				Format A3
				Scale 1:-
				TotWeight
Roxtec www.roxtec.com			Title RS PPS/S F+WT ASSEMBLY	Projection method
Restricted due to Information			Drawing number S1501853	Rev A

A		2015-02-17	se-jenboh
Rev	Type of revision	Date	Sign