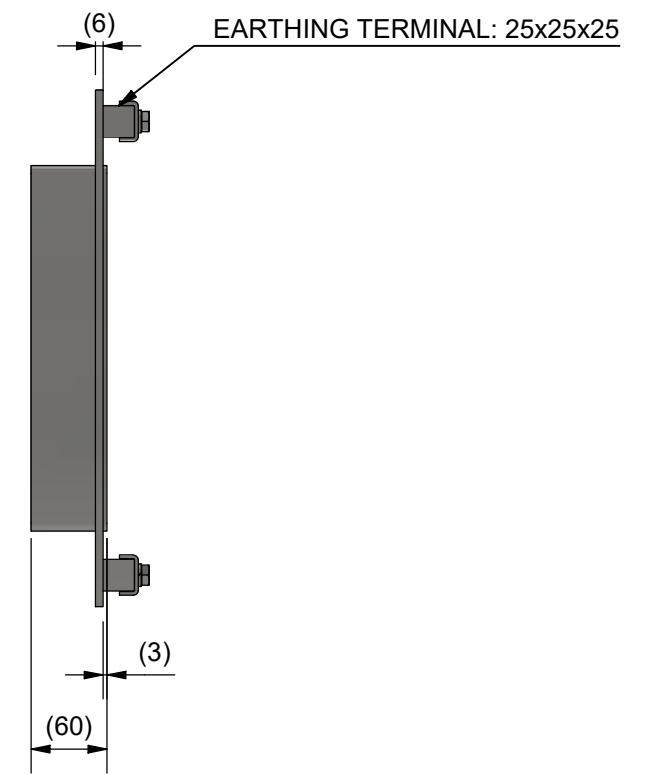
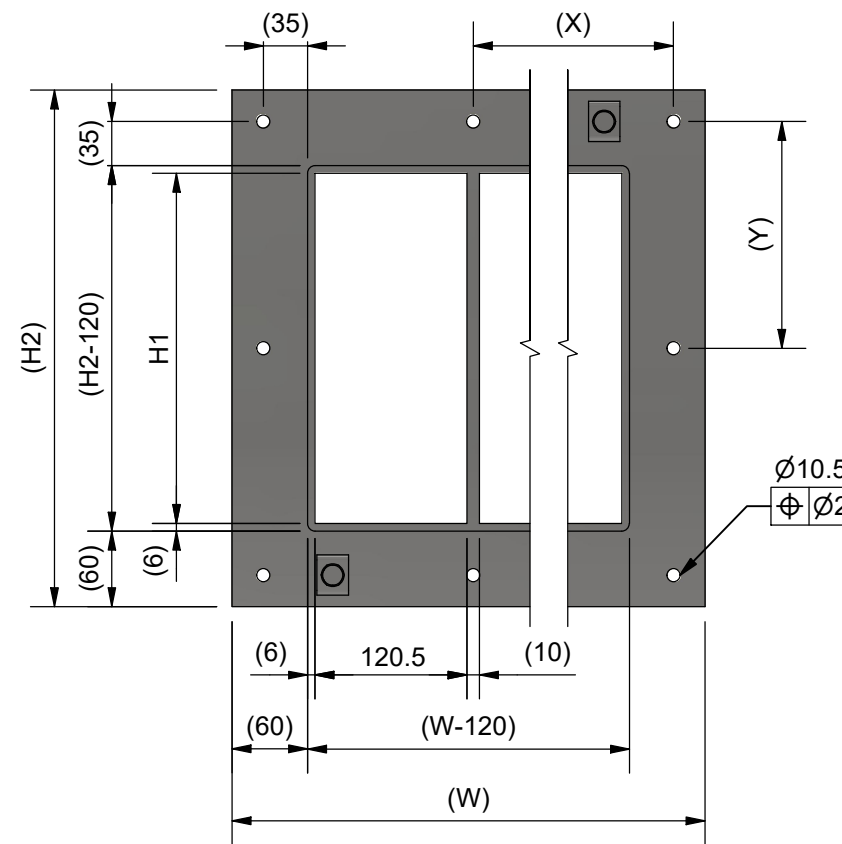


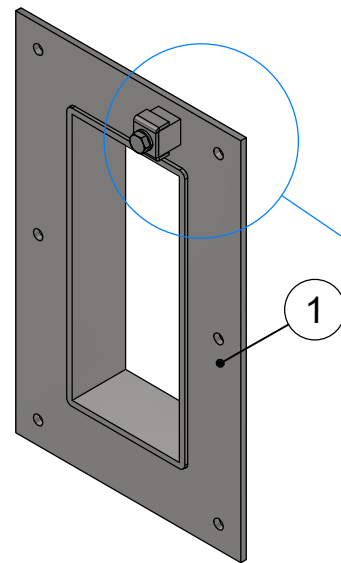
TYPE	H1 [mm]	H2 [mm]	Y [mm]	VERTICAL HOLES [QTY]
GH BG 2xN	101	233	183	2
GH BG 4xN	159.5	291.5	120.8	3
GH BG 6xN	218	350	150	3
GH BG 8xN	278	410	180	3

N [QTY]	E: EARTHING TERMINAL [QTY]	W [mm]	X [mm]	HORIZONTAL HOLES [QTY]
x1	1	252.5	202.5	2
x2	2	383	166.5	3
x3	2	513.5	154.5	4
x4	2	644	148.5	5
x5	2	774.5	181.1	5
x6	2	905	171	6
x7	2	1035.5	164.2	7
x8	2	1166	159.4	8
x9	2	1296.5	155.8	9
x10	2	1427	153	10

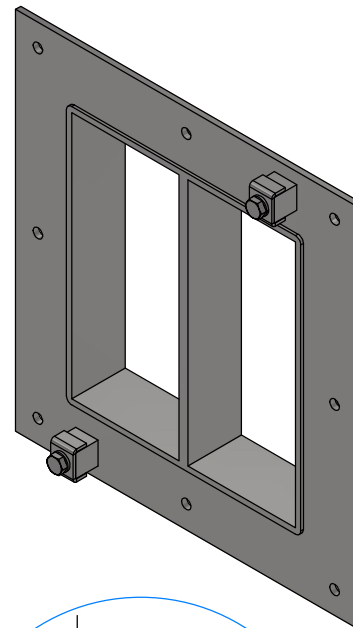
N: FRAME OPENINGS/ROW



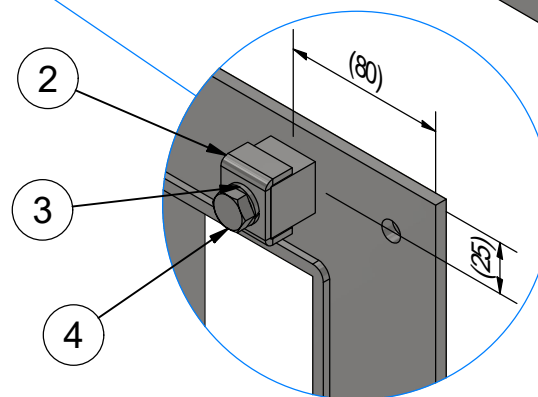
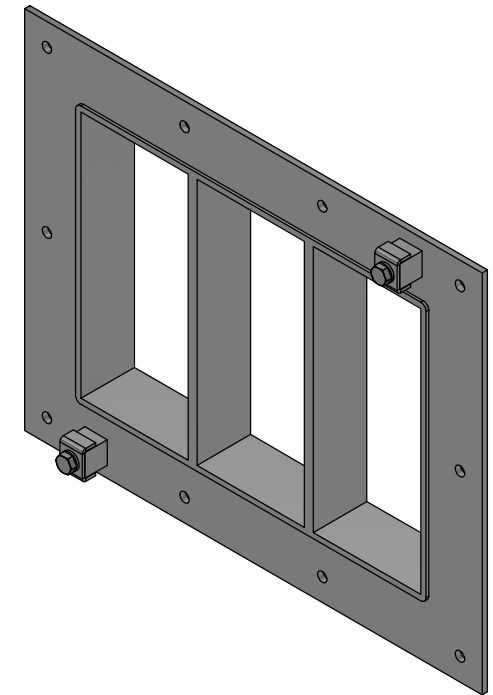
GH BG 8x1
N=1



GH BG 8x2
N=2



GH BG 8x3
N=3



4	E	SCREW	ISO M10x20	
3	E	RETAINER WASHER	M10	
2	E	SADDLE WASHER	M10	
1	1	GH BG FRAME		

ITEM	QTY	Designation	Specification				Weight
General tolerances used for manufacturing shown in document DOC-002180		Designed by/date se-jenboh 2012-11-06	Latest save date 2024-09-06	Format A3	Scale	Sheet no 1 / 1	TotWeight
www.roxtec.com		Title GH BG FRAME SINGLE AND COMBINATION		Projection method		Rev	
Information drawing		Drawing number S1029979				E	

E	LAYOUT CHANGED	2024-08-30	se-marfre
Rev	Type of revision	Date	Sign