

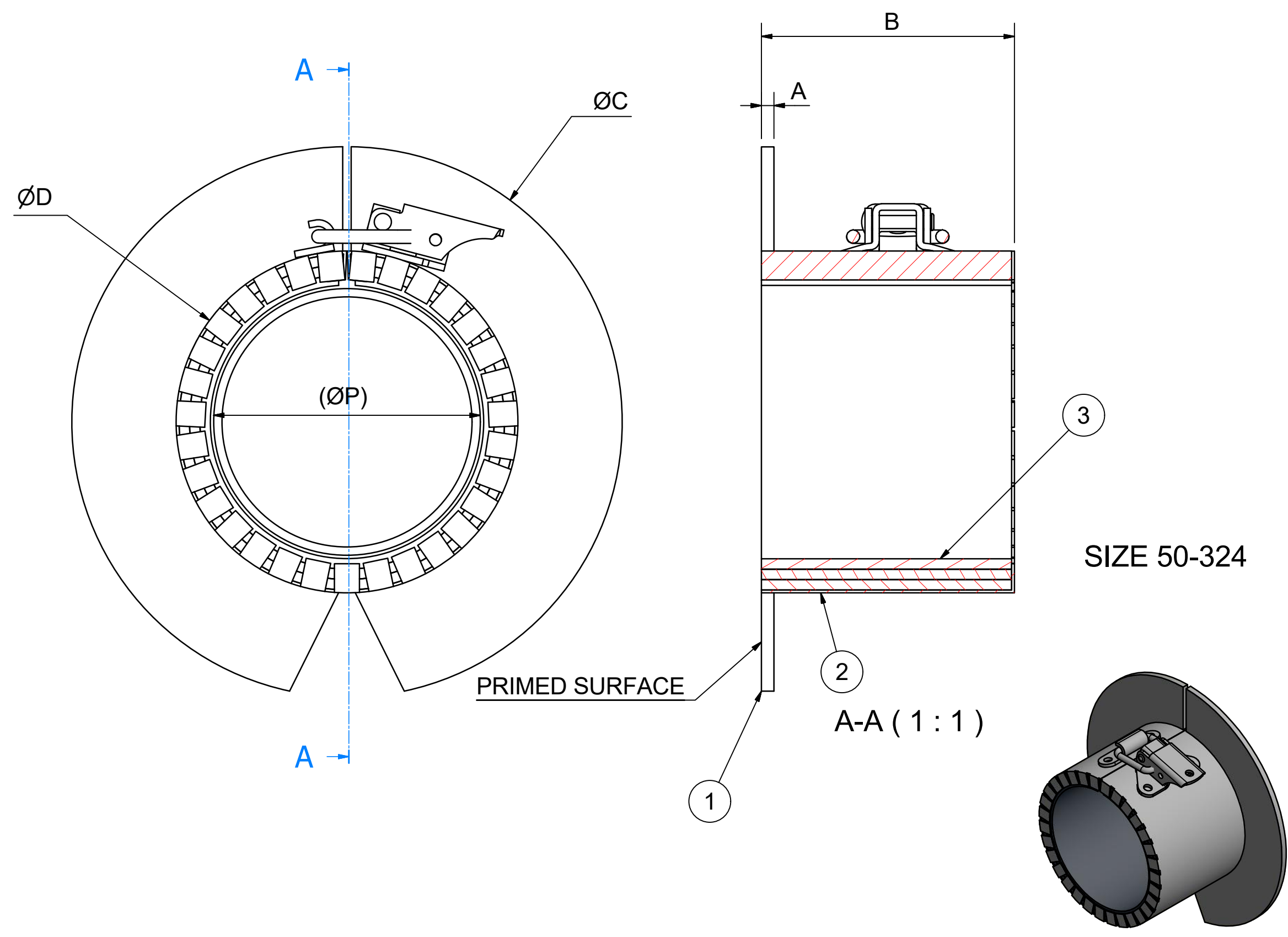
峰克赛克保留所有权利。未经授权严禁复制、使用以及向第三方泄露。

All rights reserved. Unauthorized reproduction, use or disclosure to third parties is strictly forbidden.

Rev 2.0

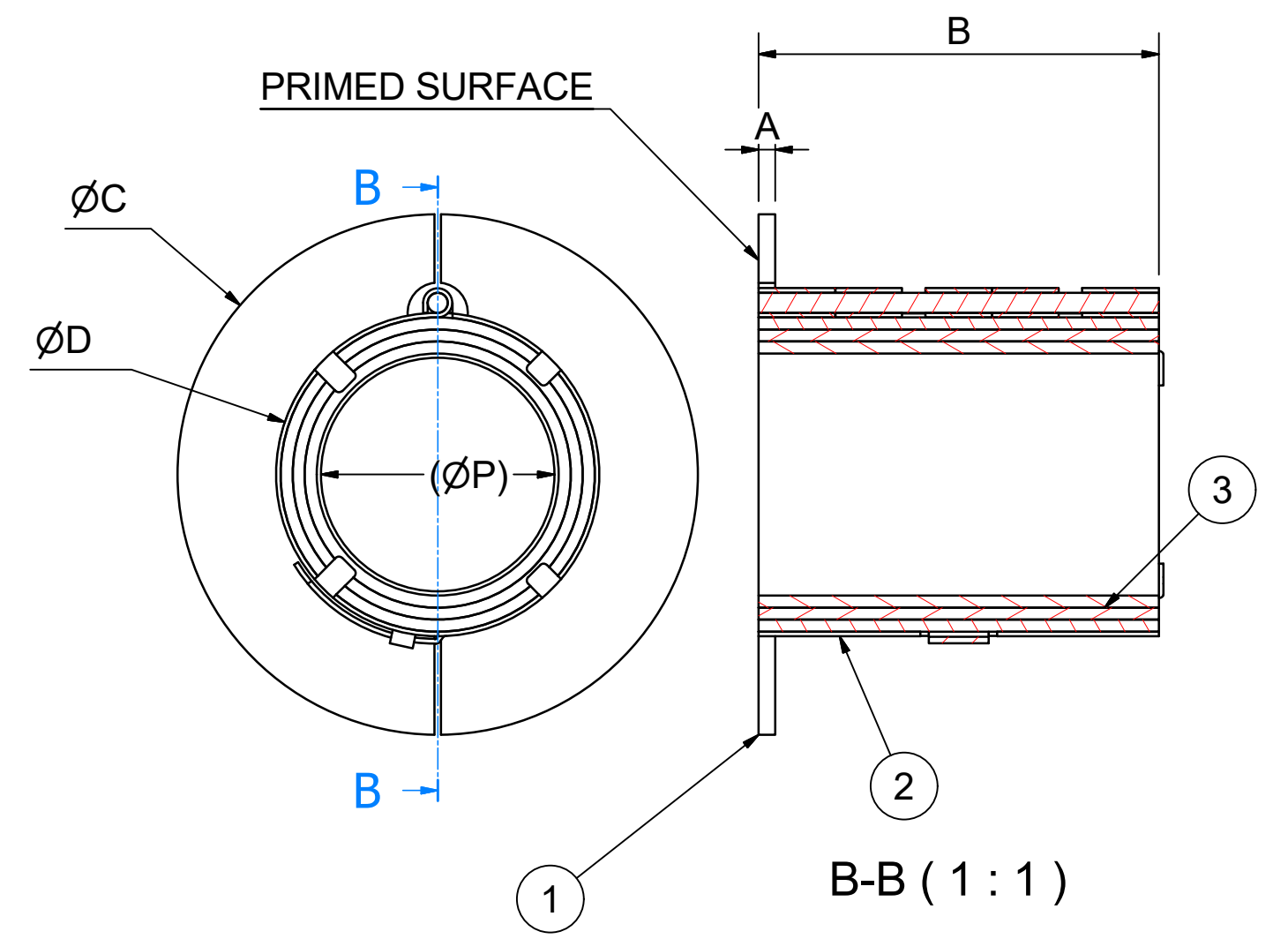
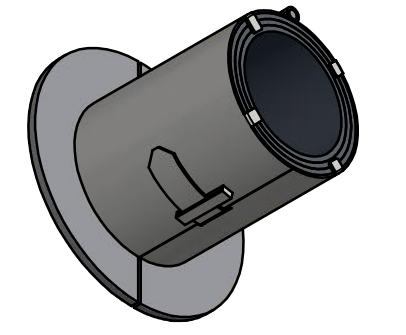
SIZE	FOR PIPE P (mm)	A (mm)	B (mm)	C (mm)	D (mm)
SLEEV-IT FC-MAR16M	16	2,5	60	57,5	28
SLEEV-IT FC-MAR20M	20	2,5	60	66	36,5
SLEEV-IT FC-MAR25M	25	2,5	60	71	41,5
SLEEV-IT FC-MAR32M	32	2,5	60	78	48
SLEEV-IT FC-MAR40M	40	2,5	60	86	56,5
SLEEV-IT FC-MAR50M (1.5")	48,3	3	61	119	69
SLEEV-IT FC-MAR60M (2")	60,3	3	61	132	82
SLEEV-IT FC-MAR63M	63	3	61	133,5	83
SLEEV-IT FC-MAR66M	66	3	61	144	94
SLEEV-IT FC-MAR75M	75	3	61	153,5	102
SLEEV-IT FC-MAR82M	82	3	61	156	106
SLEEV-IT FC-MAR90M (3")	88,9	3	61	172,5	122
SLEEV-IT FC-MAR110M	110	3	61	194	143
SLEEV-IT FC-MAR115M (4")	114,3	3	61	192,6	142
SLEEV-IT FC-MAR125M	125	3	61	207	158
SLEEV-IT FC-MAR140M	140	3	61	225	176
SLEEV-IT FC-MAR160M	160	3	61	253,5	204
SLEEV-IT FC-MAR169M (6")	168,3	3	61	263	213
SLEEV-IT FC-MAR200M	200	3	61	290	248
SLEEV-IT FC-MAR219M (8")	219,1	3	61	330	280
SLEEV-IT FC-MAR225M	225	3	61	335	286
SLEEV-IT FC-MAR273M (10")	273	3	121	410	350
SLEEV-IT FC-MAR315M	315	3	121	451	391
SLEEV-IT FC-MAR324M (12")	323,9	3	121	460	400

J



SIZE 50-324

SIZE 16-40



3	-	INTUMESCENT MATERIAL		0
2	-	STEEL COLLAR	STAINLESS STEEL	0
1	-	FLANGE	MILD STEEL	0
ITE	QTY	Designation	Specification	Weight
General tolerances used for manufacturing shown in document DCC-002180		Designed by/date se-ronpet 2012-02-02	Latest save date 2019-09-05	Format A2
		Title ROXTEC SLEEV-IT FIRE PENETRATION SEAL	Scale 1 / 1	Sheet no 1 / 1
		Restricted due to Information drawing	Drawing number S1026329	TotWeight 0,2 kg
		www.roxtec.com	Projection method First angle	Rev J

Information drawings show general design and nominal dimensions if not else stated