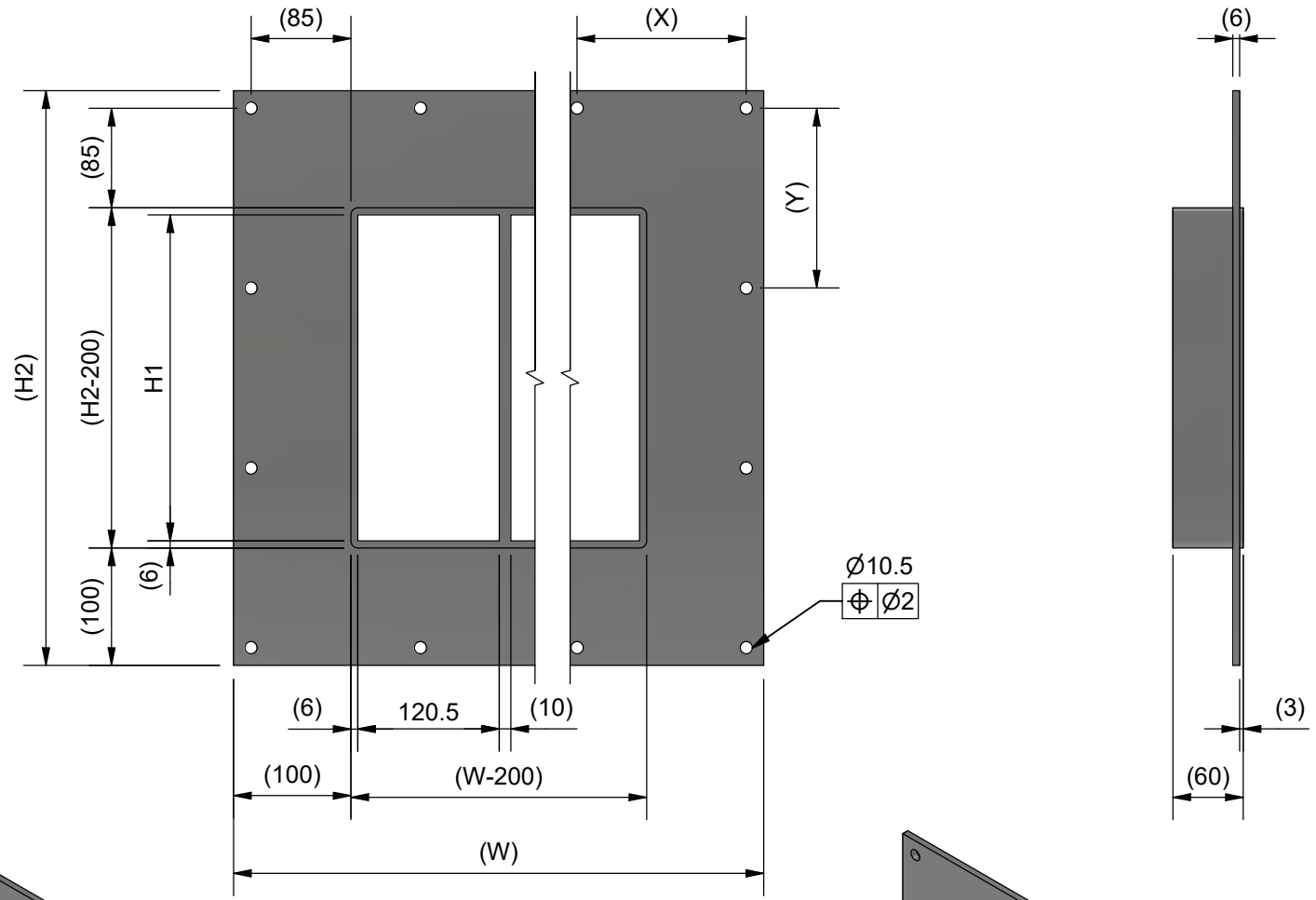


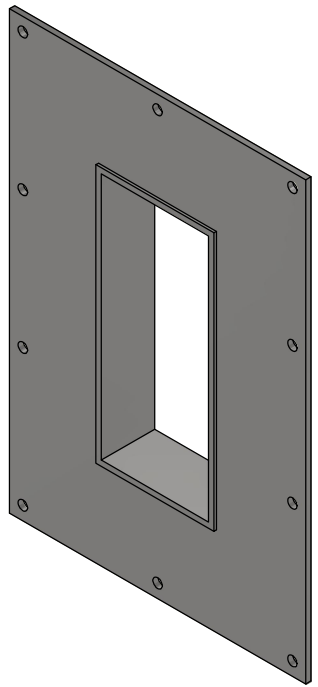
TYPE	H1 [mm]	H2 [mm]	Y [mm]	VERTICAL HOLES [QTY]
GH 2xN FL100	101	313	141.5	3
GH 4xN FL100	159.5	371.5	170.8	3
GH 6xN FL100	218	430	133.3	4
GH 8xN FL100	278	490	153.3	4

N [QTY]	W [mm]	X [mm]	HORIZONTAL HOLES [QTY]
x1	332.5	151.3	3
x2	463	144.3	4
x3	593.5	140.9	5
x4	724	173.5	5
x5	854.5	164.9	6
x6	985	159.2	7
x7	1115.5	155.1	8
x8	1246	173.7	8
x9	1376.5	168.3	9
x10	1507	164.1	10

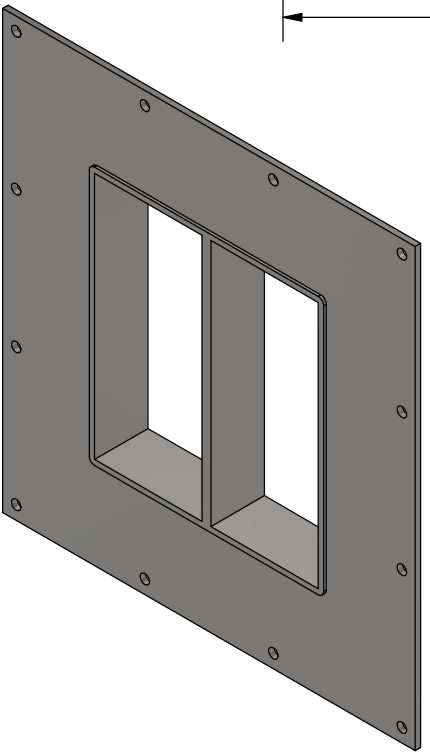
N: FRAME OPENINGS/ROW



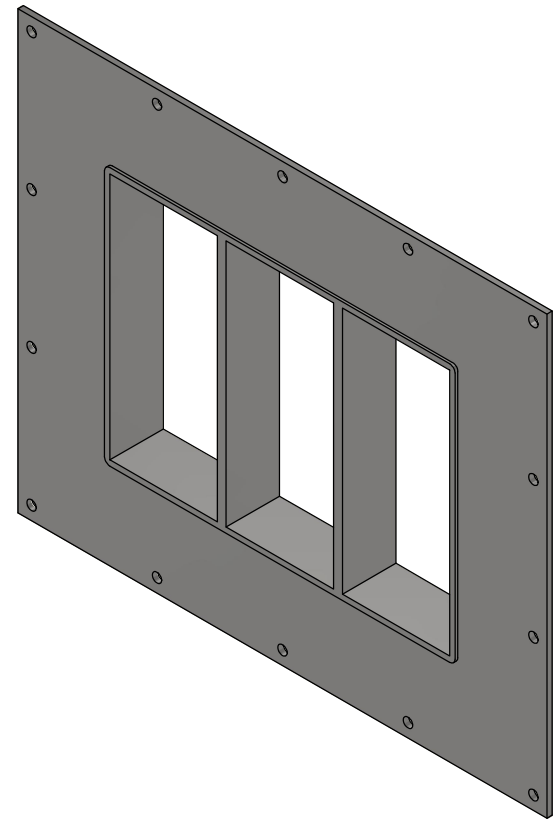
GH 8x1 FL100
N=1




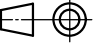
GH 8x2 FL100
N=2



GH 8x3 FL100
N=3



D	LAYOUT CHANGED	2024-08-22	se-marfre
Rev	Type of revision	Date	Sign

General tolerances used for manufacturing shown in document DOC-002180		Designed by/date se-tontor 2011-11-17	Latest save date 2024-08-28	Format A3	Scale	Sheet no 1 / 1	TotWeight
 www.roxtec.com		Title GH FRAME FL100 SINGLE AND COMBINATION FRAME				Projection method 	
		Restricted due to Information drawing			Drawing number S1025601		Rev D