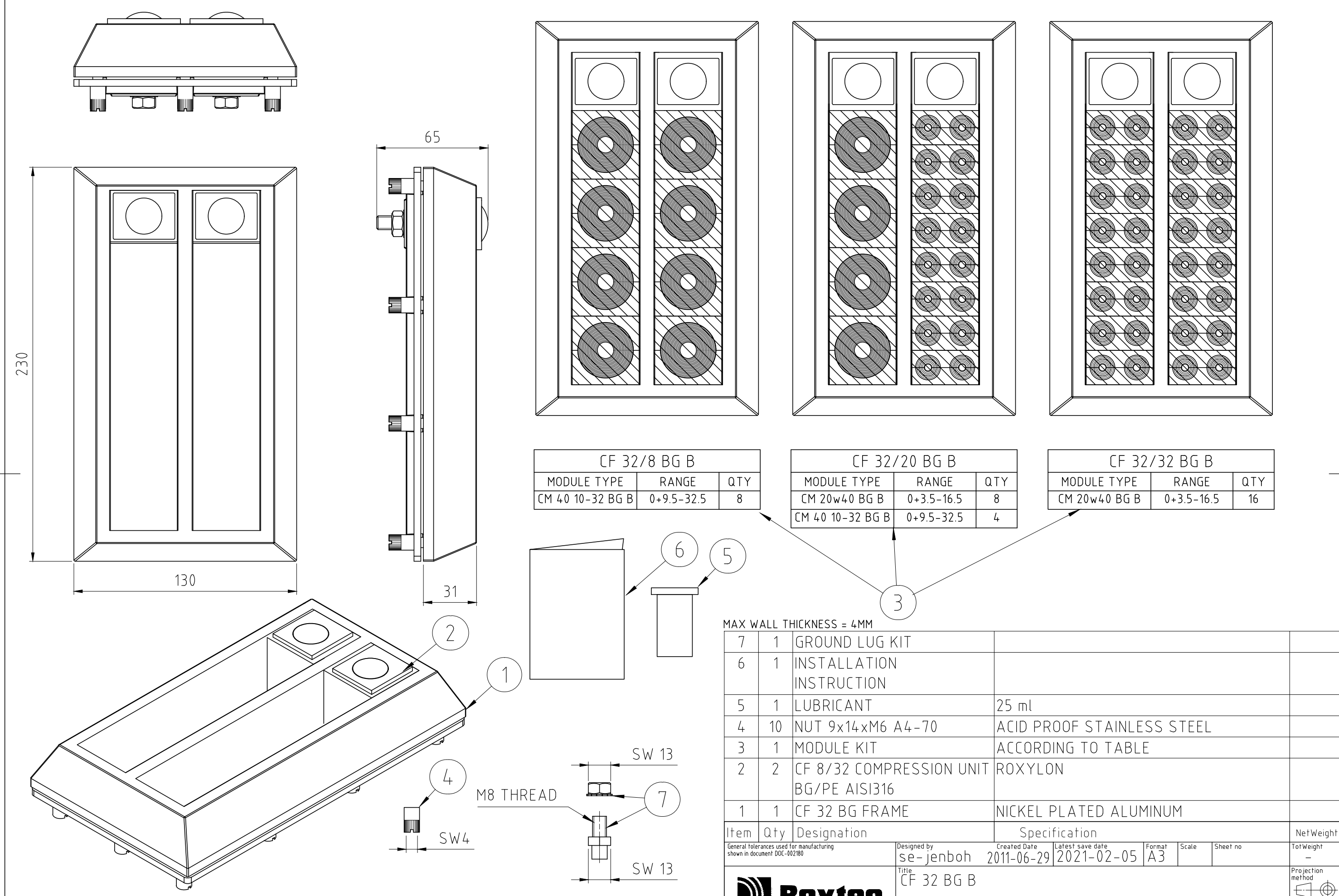


烙克囊克保留所有权利。未经授权严禁复制，使用以及向第三方泄漏。

All rights reserved. Unauthorized reproduction, use or disclosure to third parties is strictly forbidden.

Rev 2.0




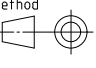
CF 32/8 BG B		
MODULE TYPE	RANGE	QTY
CM 40 10-32 BG B	0+9.5-32.5	8

CF 32/20 BG B		
MODULE TYPE	RANGE	QTY
CM 20w40 BG B	0+3.5-16.5	8
CM 40 10-32 BG B	0+9.5-32.5	4

CF 32/32 BG B		
MODULE TYPE	RANGE	QTY
CM 20w40 BG B	0+3.5-16.5	16

MAX WALL THICKNESS = 4MM

Item	Qty	Designation	Specification	NetWeight
7	1	GROUND LUG KIT		
6	1	INSTALLATION INSTRUCTION		
5	1	LUBRICANT	25 ml	
4	10	NUT 9x14xM6 A4-70	ACID PROOF STAINLESS STEEL	
3	1	MODULE KIT	ACCORDING TO TABLE	
2	2	CF 8/32 COMPRESSION UNIT BG/PE AISI316	ROXYLON	
1	1	CF 32 BG FRAME	NICKEL PLATED ALUMINUM	

General tolerances used for manufacturing shown in document DOC-002180		Designed by se-jenboh	Created Date 2011-06-29	Latest save date 2021-02-05	Format A3	Scale	Sheet no	NetWeight -
 www.roxtec.com		Title CF 32 BG B KIT SOLUTIONS		Drawing number S1024234		Projection method 		Rev E
Information drawing								

E	TABLE UPDATED	2020-12-14	se-mikgru
Rev	Type of revision	Date	Sign

Information drawings show general design and nominal dimensions if not else stated