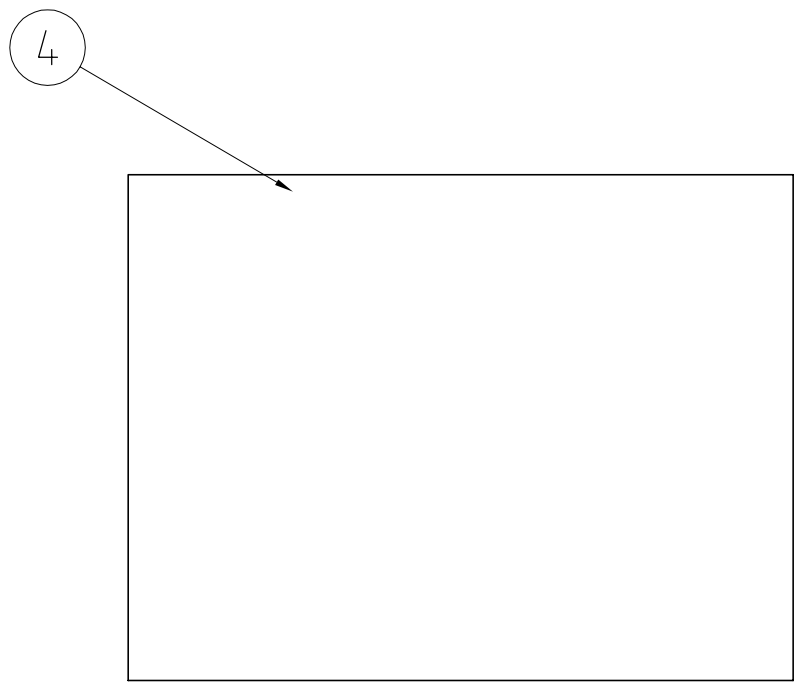
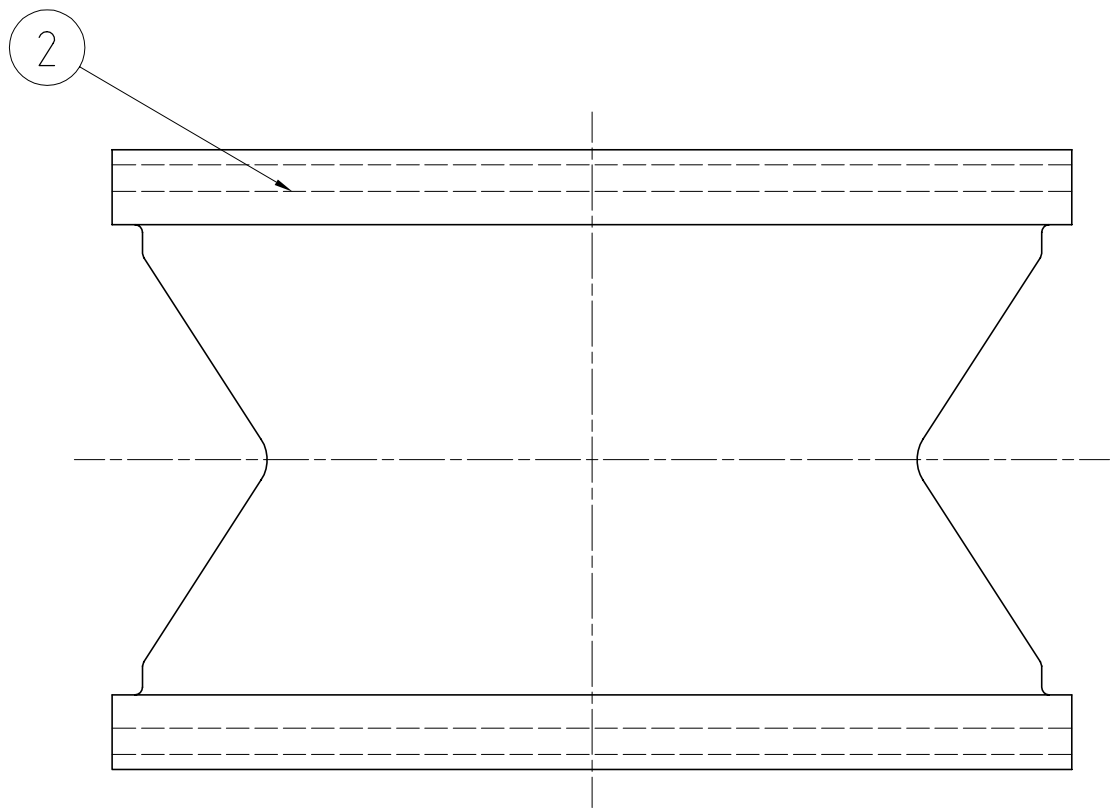
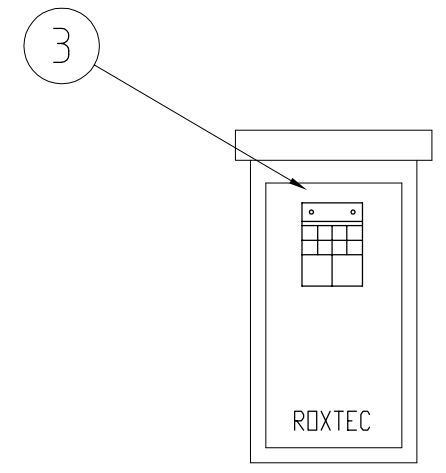
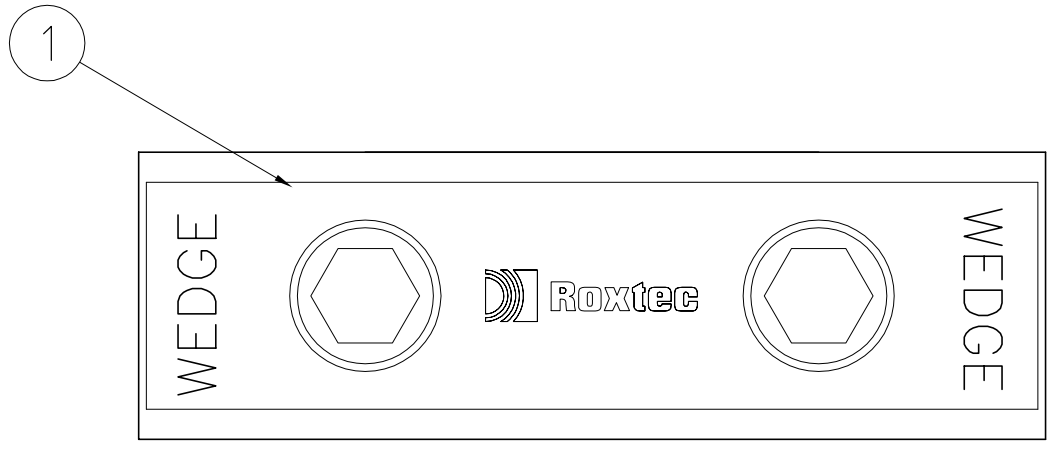
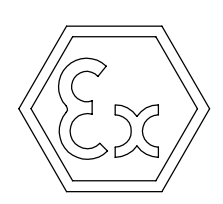


We reserve all rights in this document and in the information contained therein. Reproduction, use or disclosure to third parties without express authority is strictly forbidden. ©ROXTEC INTERNATIONAL AB



TYPE	MATERIAL
-01	GALVANIZED
-02	AISI 316



4	1	ASSEMBLY INSTRUCTION	-	-	
3	1	LUBRICANT	-	-	
2	5	STAYPLATE 120	S1004866 - 01/03	-	
1	1	ROXTEC WEDGE 120	S1004801 -01/02	-	
Item	Qty	Designation	Specification	Net Weight	
ROXTEC INTERNATIONAL AB BOX 540 S-371 23 Karlskrona TEL: +46 455 366700 FAX: +46 455 82012		Designed by M PRZYBYLA Checked by J AKESSON Approved by J AKESSON	Date 2009-03-11 Format A3 Scale 1:1	General tolerance ISO 2768-1 m Welded details SS-EN 25 817 SS-EN 30 042 C General surface roughness, Ra -	Tot Weight -
		Restricted due to INFORMATION DRAWING	Title WEDGE KIT EX ASSEMBLY Drawing number S1016671	Projection method 	Rev -

-	-	2005-04-29	
Rev	Type of revision	Date	Sign