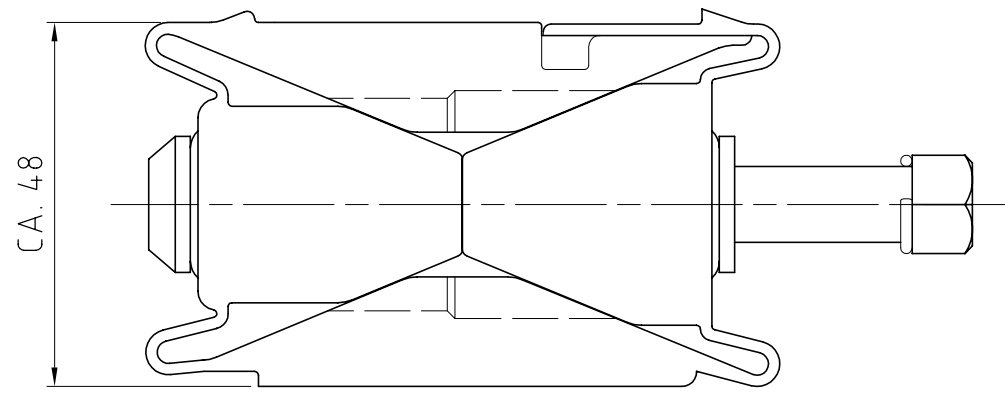
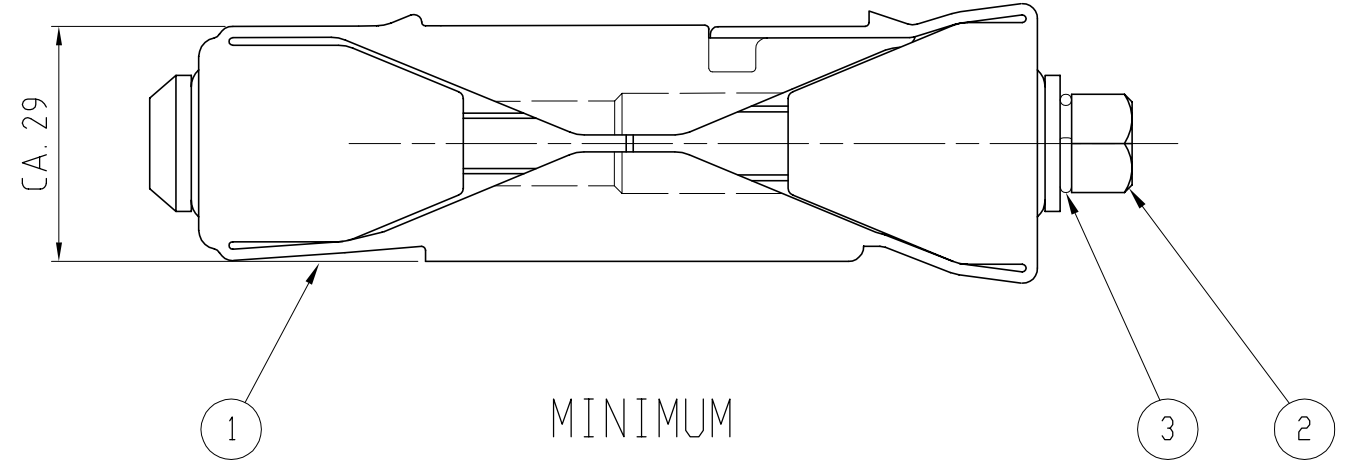


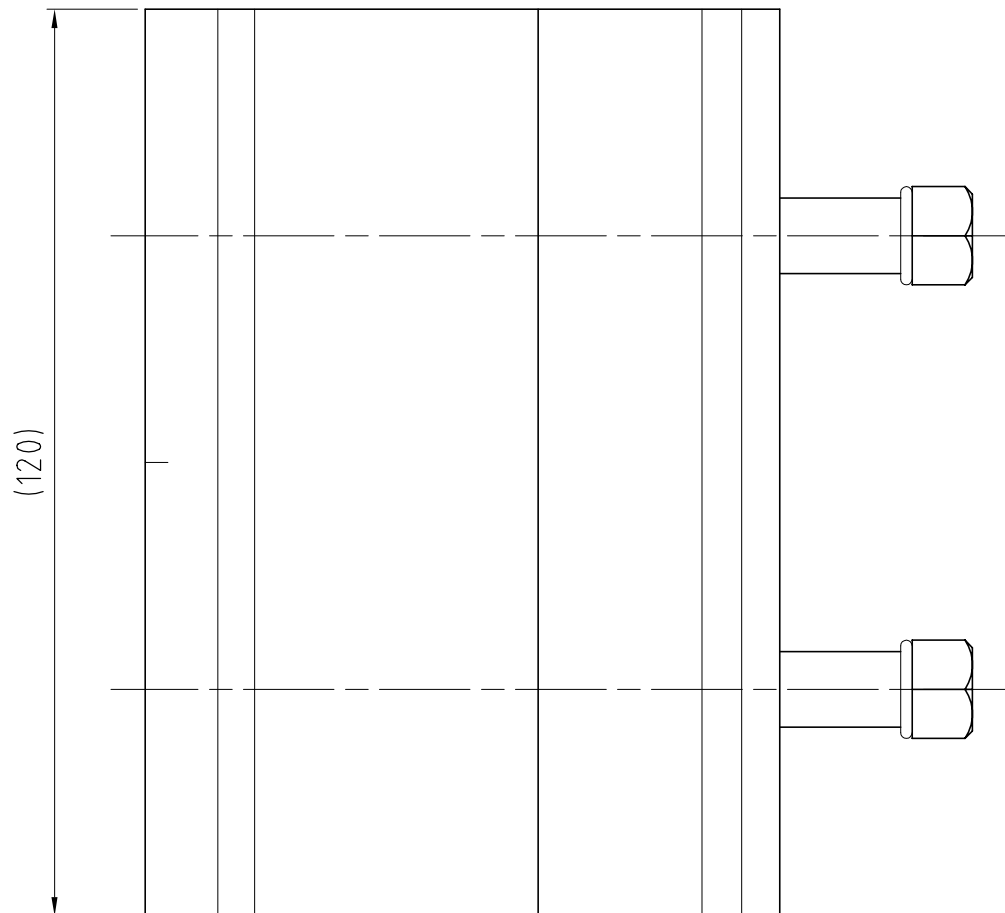
We reserve all rights in this document and in the information contained therein. Reproduction, use or disclosure to third parties without express authority is strictly forbidden. ©ROXTEC INTERNATIONAL AB



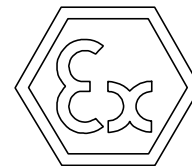
MAXIMUM



MINIMUM



TYPE	MATERIAL
-01	GALVANIZED
-02	AISI 316



3	2	DISTANCE RING	-	-	
2	2	SCREW M8/M10L	-	-	
1	1	ROXTEC WEDGE 120	-	-	
Item	Qty	Designation	Specification	Net Weight	
ROXTEC INTERNATIONAL AB BOX 540 S-371 23 Karlskrona TEL: +46 455 366700 FAX: +46 455 82012		Designed by M PRZYBYLA Checked by J AKESSON Approved by J AKESSON	Date 2009-03-11 Format A3 Scale	General tolerance EN ISO 2768-1/2-m/K EN ISO 13920-BF Welded details EN ISO 5817-B EN ISO 10042-B General surface roughness, Ra 12,5	Tot Weight - Projection method
		Restricted due to INFORMATION DRAWING	Title WEDGE 120 EX ASSEMBLY	Drawing number S1016670 Rev -	

Rev	Type of revision	Date	Sign
-	-	2008-03-05	