

烙克赛克保留所有权利。未经授权严禁复制，使用以及向第三方泄露。

All rights reserved. Unauthorized reproduction, use or disclosure to third parties is strictly forbidden.

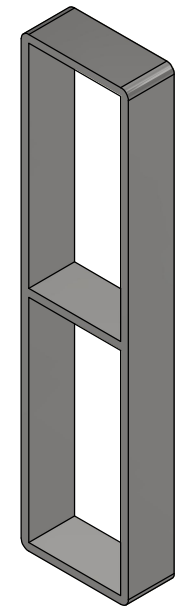
Rev 3.1

TYPE	R [QTY]	H1 [mm]	H2 IF N=1 [mm]	H2 IF N>1 [mm]
S 2+2xN	2	101	232	242
S 4+4xN	2	159.5	349	359
S 6+6xN	2	218	466	476
S 8+8xN	2	278	586	596
S 2+2+2xN	3	101	343	363
S 4+4+4xN	3	159.5	518.5	538.5
S 6+6+6xN	3	218	694	714
S 8+8+8xN	3	278	874	894
S 2+2+2+2xN	4	101	454	484
S 4+4+4+4xN	4	159.5	688	718
S 6+6+6+6xN	4	218	922	952
S 8+8+8+8xN	4	278	1162	1192

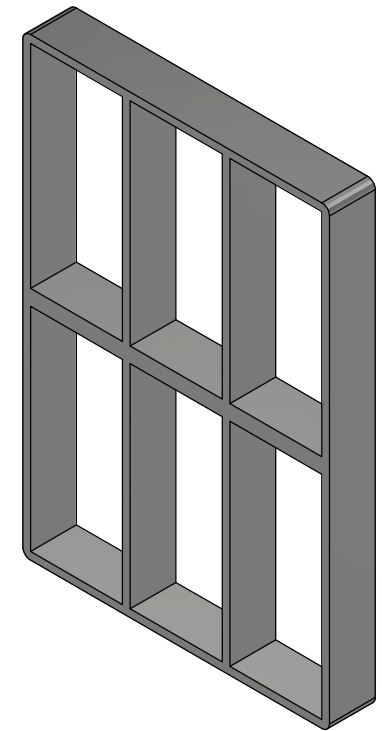
N [QTY]	W [mm]	T [mm]
x1	140.5	1
x2	271	2
x3	401.5	2
x4	532	2
x5	662.5	2
x6	793	2
x7	923.5	2
x8	1054	2
x9	1184.5	2
x10	1315	2

N: FRAME OPENINGS/ROW

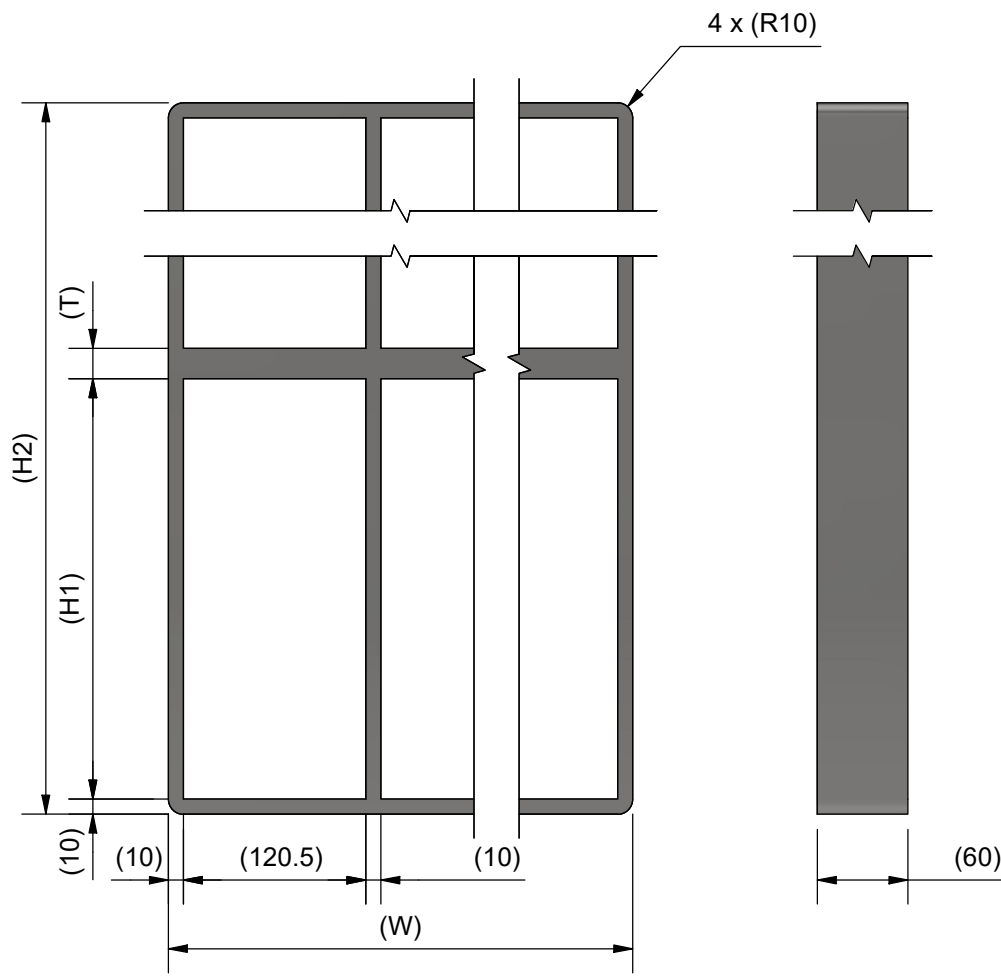
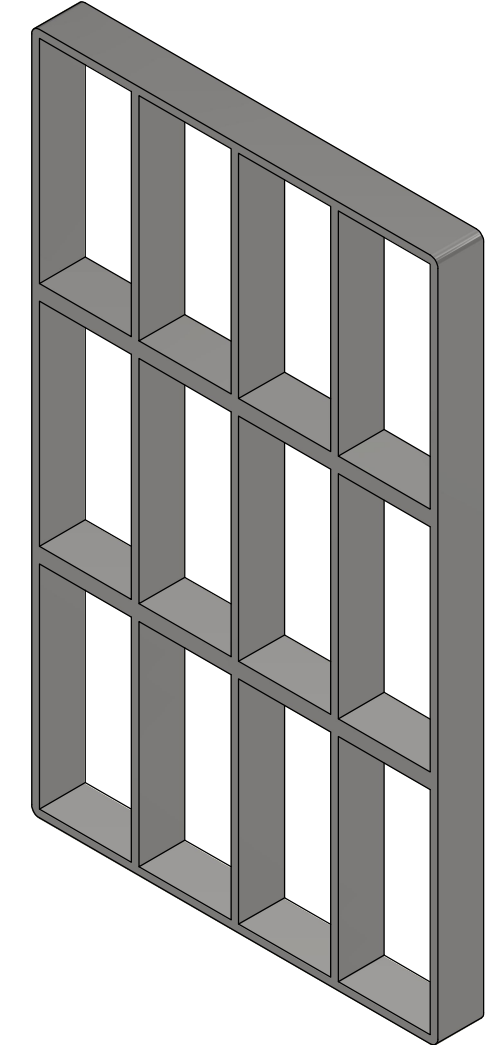
S 8+8x1
N=1



S 8+8x3
N=3



S 8+8+8x4
N=4



MATERIAL ACID PROOF STAINLESS STEEL
MATERIAL MILD STEEL
PRIMED (TRANSPORT PROTECTION)



A	LAYOUT CHANGED	2024-07-05	se-jenboh
Rev	Type of revision	Date	Sign

General tolerances used for manufacturing shown in document DOC-002180		Designed by/date se-marprz 2009-03-10	Latest save date 2024-07-05	Format A3	Scale	Sheet no 1 / 1	TotWeight
 www.roxtec.com		Title S FRAME EX + SINGLE AND +COMBINATION FRAME				Projection method 	
		Restricted due to Information drawing			Drawing number S1016622		Rev A

Information drawings show general design and nominal dimensions if not else stated