

烙克赛克保留所有权利。未经授权严禁复制、使用以及向第三方泄露。

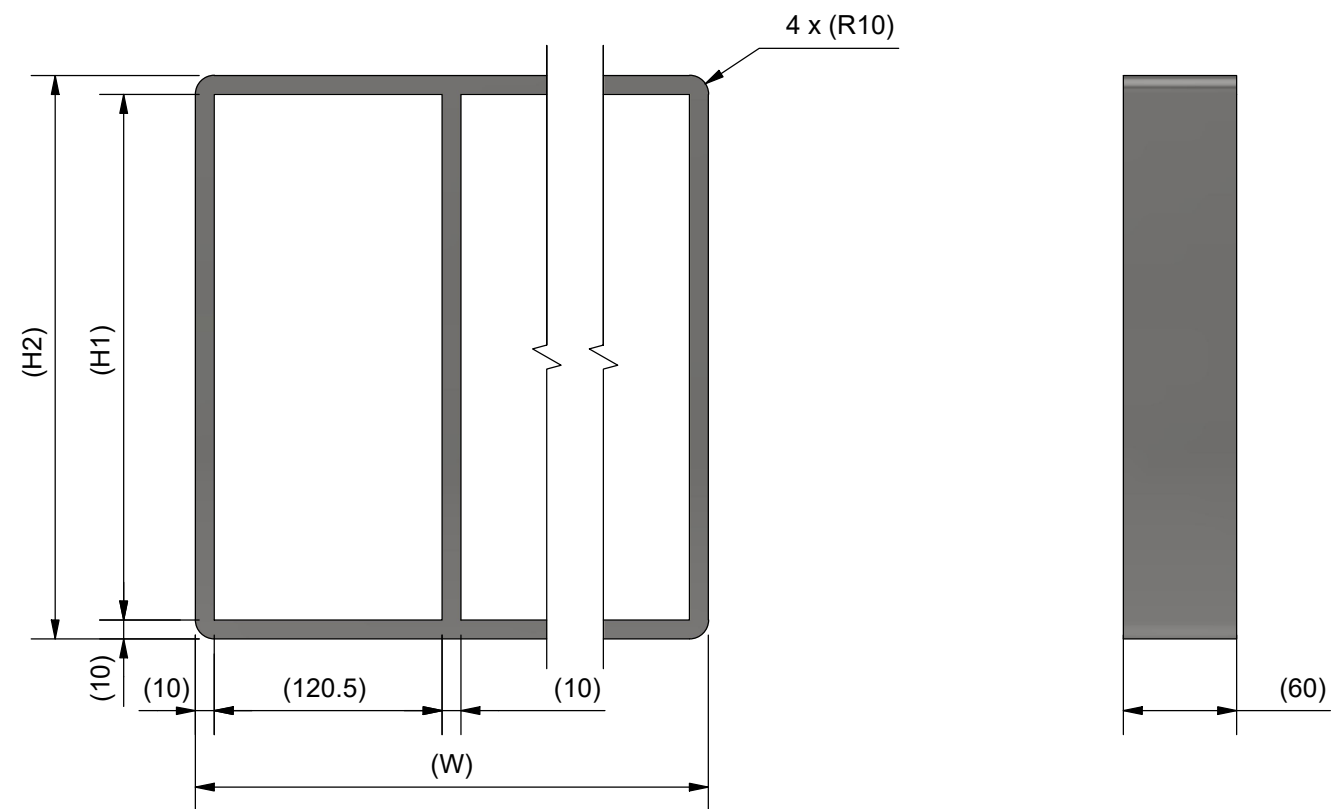
Rev 3.1 All rights reserved. Unauthorized reproduction, use or disclosure to third parties is strictly forbidden.

TYPE	H1 [mm]	H2 [mm]
S 2xN	101	121
S 4xN	159.5	179.5
S 6xN	218	238
S 8xN	278	298

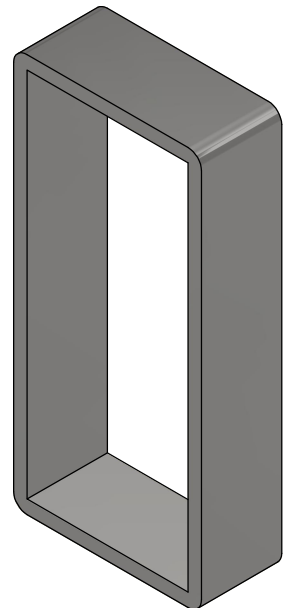
N [QTY]	W [mm]
x1	140.5
x2	271
x3	401.5
x4	532
x5	662.5
x6	793
x7	923.5
x8	1054
x9	1184.5
x10	1315

N: NUMBER OF PACKING SPACES

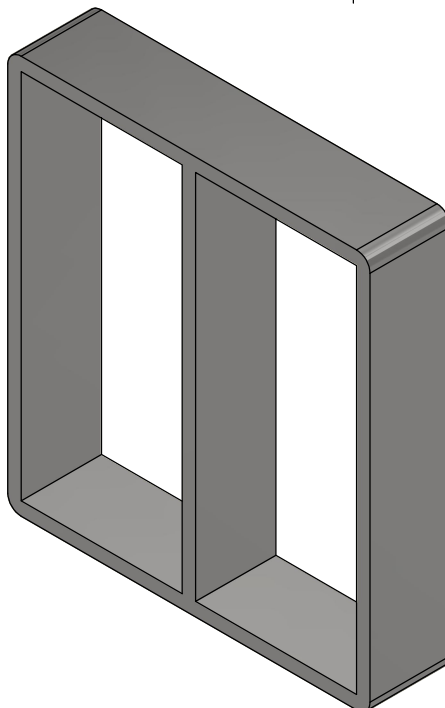
MATERIAL ACID PROOF STAINLESS STEEL
MATERIAL MILD STEEL
PRIMED (TRANSPORT PROTECTION)



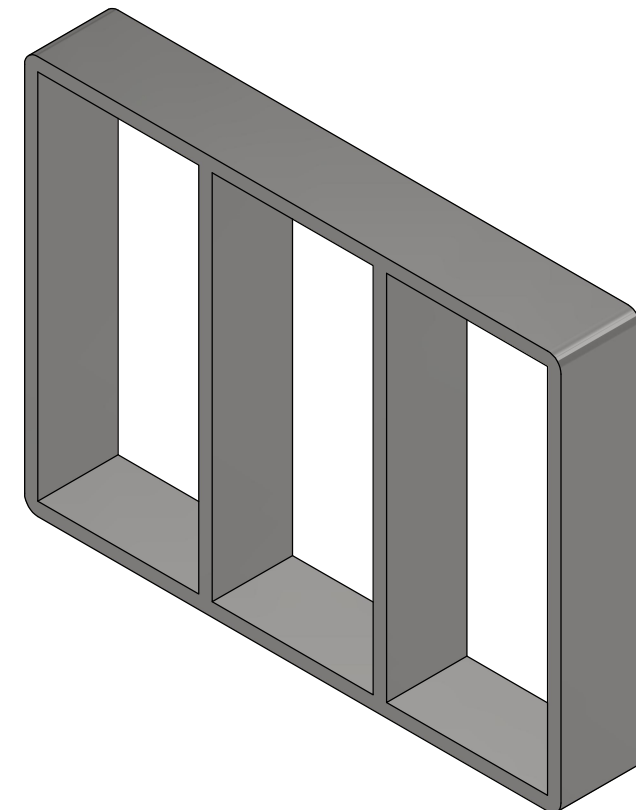
S 6X1
N = 1



S 6X2
N = 2



S 6X3
N = 3



Rev	A	LAYOUT CHANGED	2024-07-04	se-jenboh
	Rev	Type of revision	Date	Sign

General tolerances used for manufacturing shown in document DOC-002180		Designed by/date se-marprz 2009-03-10	Latest save date 2024-07-05	Format A3	Scale	Sheet no 1 / 1	TotWeight
 www.roxtec.com		Title S FRAME EX SINGLE AND COMBINATION FRAME				Projection method 	
		Restricted due to Information drawing			Drawing number S1016620		Rev A

Information drawings show general design and nominal dimensions if not else stated