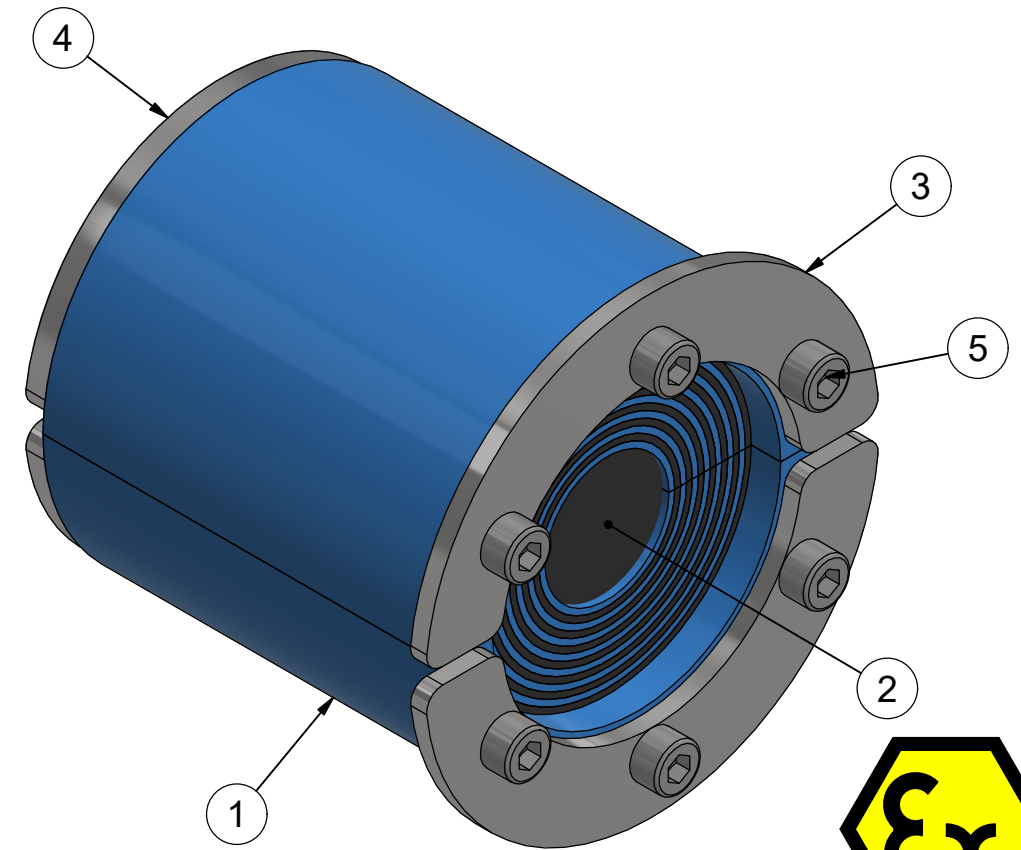
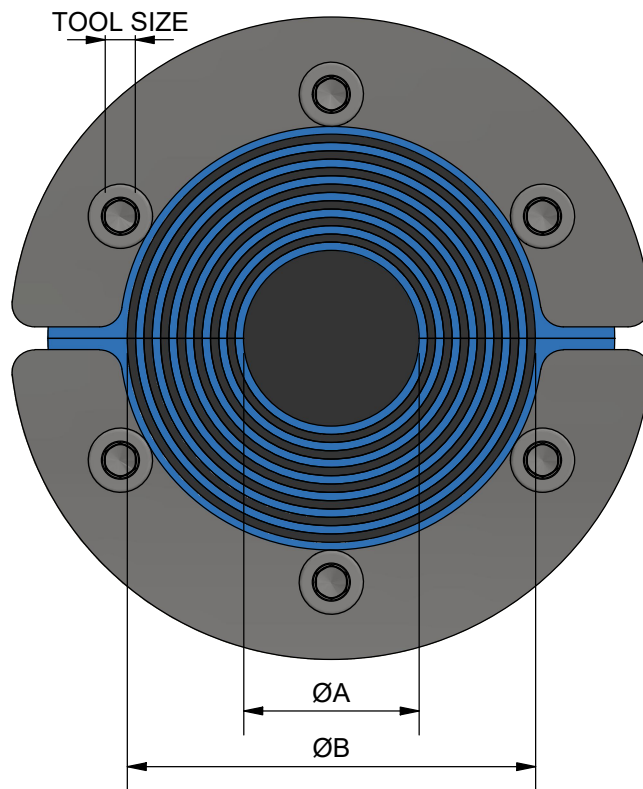
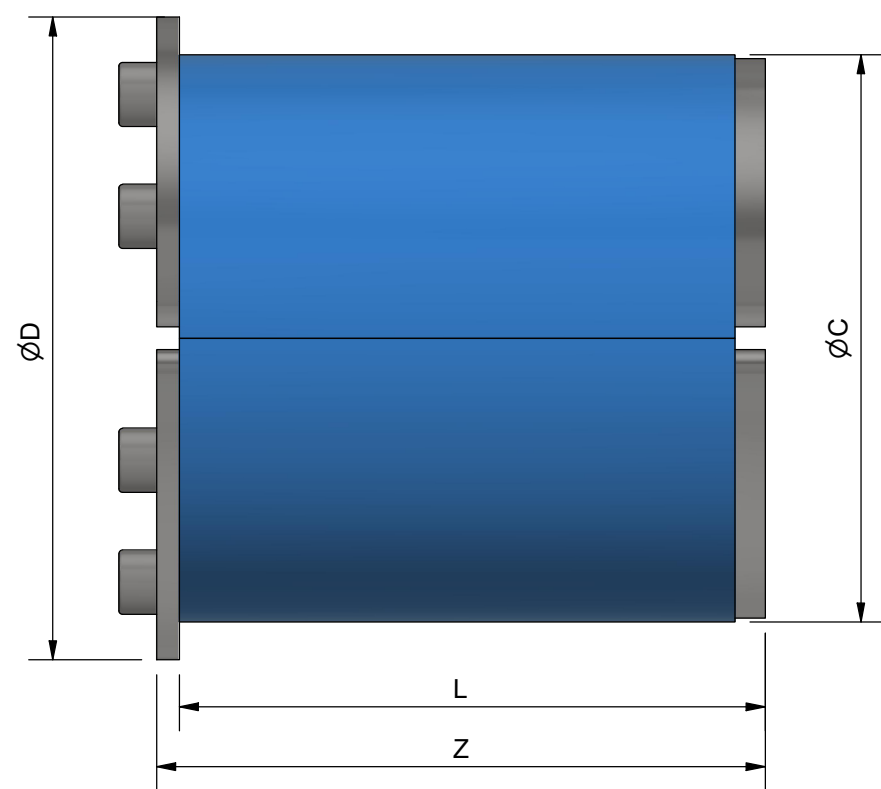
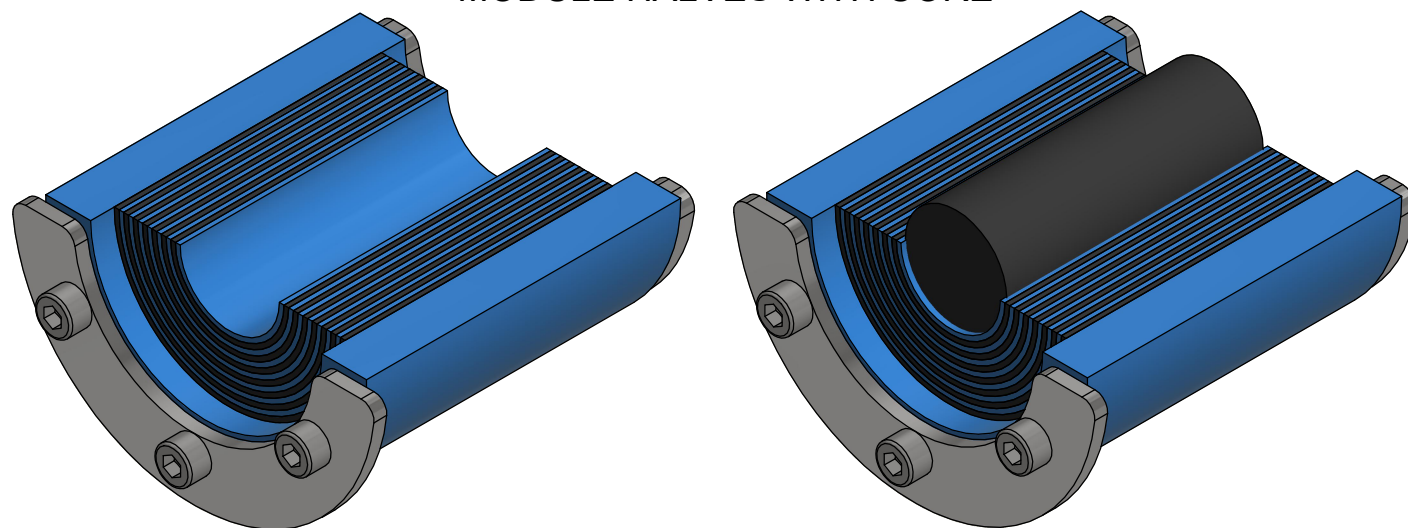


TYPE	CABLE/PIPE Ø (A-B) [mm]	C [mm]	D [mm]	L [mm]	Z [mm]	TOOL SIZE [mm]	S [QTY]
RS 25 Ex	3.6 - 12	25	32	39	43	2.5	4
RS 31 Ex	4 - 17	31	37	39	43	2.5	4
RS 43 Ex	4 - 23	43	53	78	85	4	4
RS 50 Ex	8 - 30	50	60	78	85	4	4
RS 68 Ex	26 - 48	68	78	78	85	4	4
RS 75 Ex	24 - 54	75	85	78	85	4	6
RS 100 Ex*	48 - 70	100	110	78	86	4	6
RS 125 Ex*	66 - 98	125	145	79	88	5	6
RS 150 Ex WOC	93 - 119	150	170	79	88	5	8

*ALSO AVAILABLE IN WOC VERSION DELIVERED WITHOUT CORE



MODULE HALVES WITH CORE



ITEM	QTY	Designation	Specification	Weight
5	S	SCREW	ISO 4762 A4	
4	2	REAR FITTING	ACID PROOF STAINLESS STEEL	
3	2	FRONT FITTING	ACID PROOF STAINLESS STEEL	
2	1	CORE	ROXYLON	
1	2	RUBBER FRAME	ROXYLON	

General tolerances used for manufacturing shown in document DOC-002180		Designed by/date se-marprz 2009-03-10	Latest save date 2024-07-04	Format A3	Scale	Sheet no 1 / 1	TotWeight
		Title RS EX 25-150 ASSEMBLY		Projection method 		Rev C	
www.roxtec.com		Information drawing		Drawing number		S1016610	

Rev	Type of revision	Date	Sign
C	LAYOUT CHANGED	2024-07-03	se-marpre