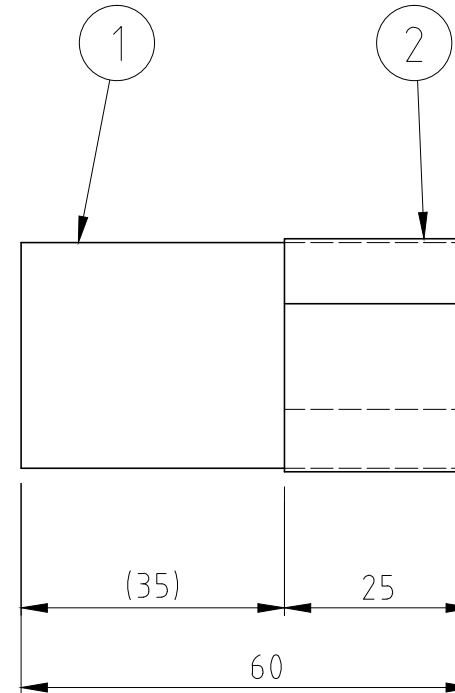
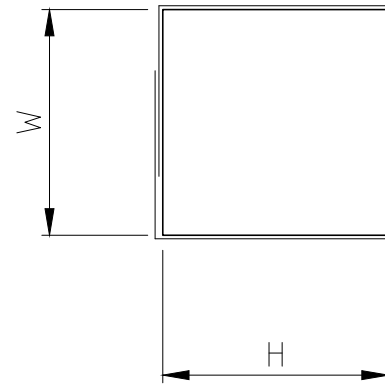


We reserve all rights in this document and in the information contained therein. Reproduction, use or disclosure to third parties without express authority is strictly forbidden. © ROXTEC INTERNATIONAL AB

TYPE	W (mm)	H (mm)
RM 5w40/0 PE B	40	5
RM 5w60/0 PE B	60	5
RM 5w120/0 PE B	120	5
RM 10w40/0 PE B	40	10
RM 10w60/0 PE B	60	10
RM 10w120/0 PE B	120	10
RM 10/0 PE B	10	10
RM 15/0 PE B	15	15
RM 20/0 PE B	20	20
RM 30/0 PE B	30	30
RM 30H90/0 PE B	30	90
RM 40/0 PE B	40	40
RM 40H80/0 PE B	40	80
RM 60/0 PE B	60	60
RM 90/0 PE B	90	90
RM 120/0 PE B	120	120



Rev	Type of revision	Date	Sign
B	DIMENSION CORRECTED	2017-03-09	se-henols

2	1	CONDUCTIVE TAPE	-	-
1	1	RUBBER	ROXYLON	-
Item	Qty	Designation	Specification	Net Weight
ROXTEC INTERNATIONAL AB BOX 540 S-371 23 Karlskrona TEL: +46 455 366700 FAX: +46 455 82012		Designed by fc_service	Date 2007-04-25	General tolerance DIN ISO 2768-1/2-m/K DIN ISO 13920-BF
		Checked by	Format A3	Welded details EN ISO 5817-B EN ISO 10042-B
		Approved by se-ronpet	Scale 1:1	General surface roughness, Ra 12,5
		Restricted due to Information drawing	Title RM PE B MODULES EMC SOLID MODULES	
		Drawing number S1011313		Projection method
				Rev B