

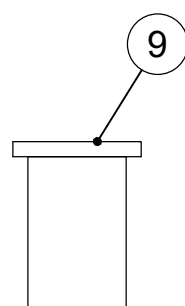
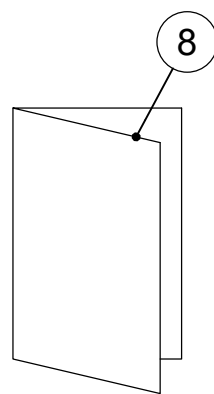
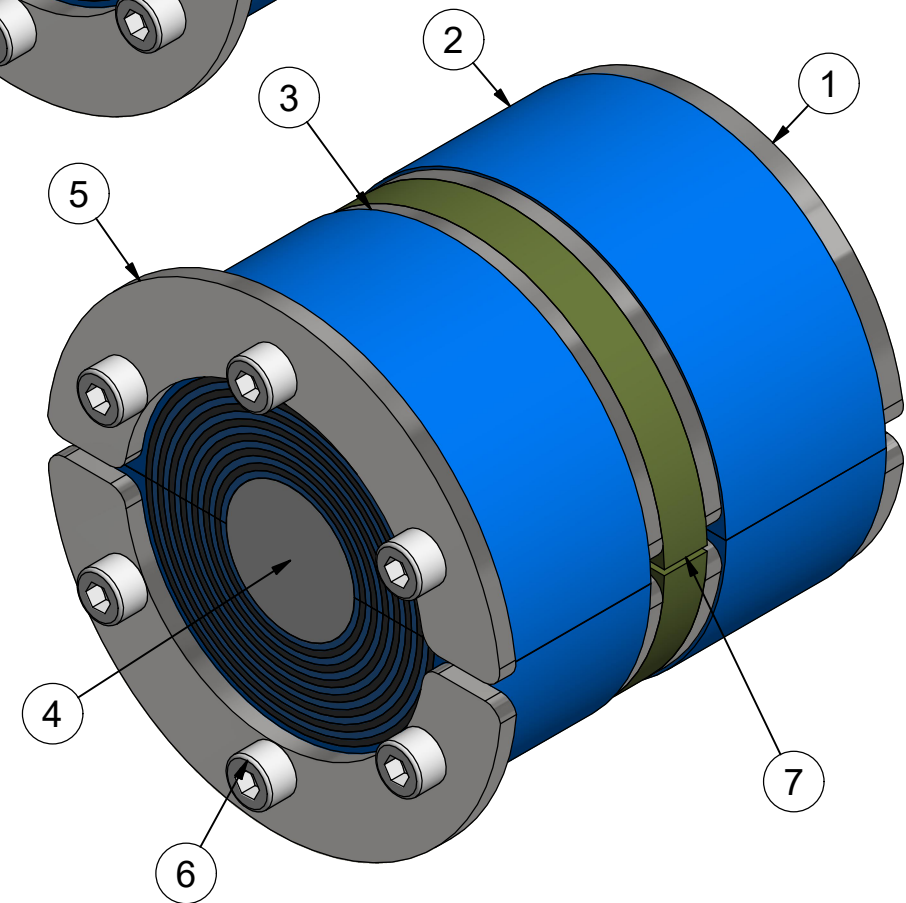
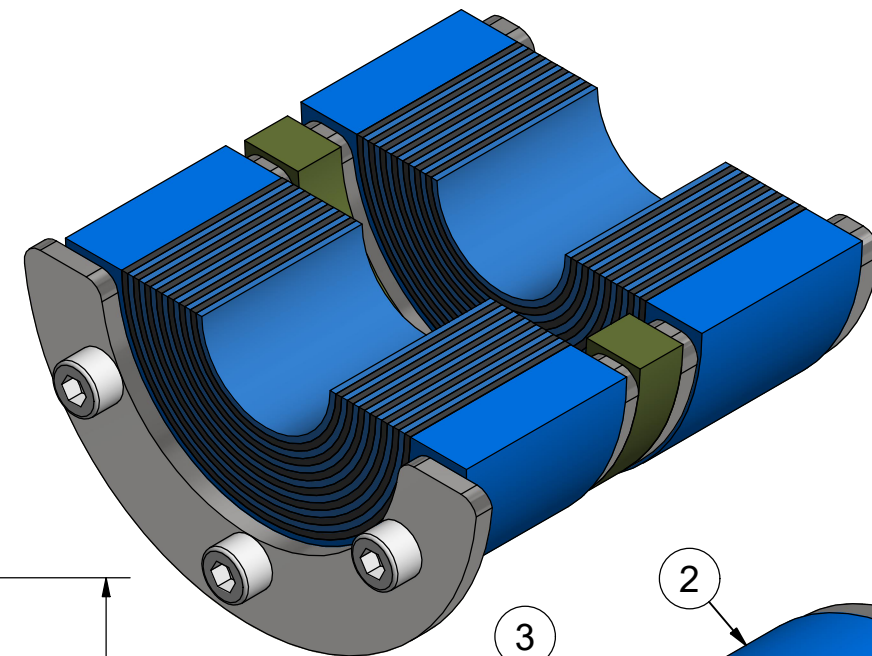
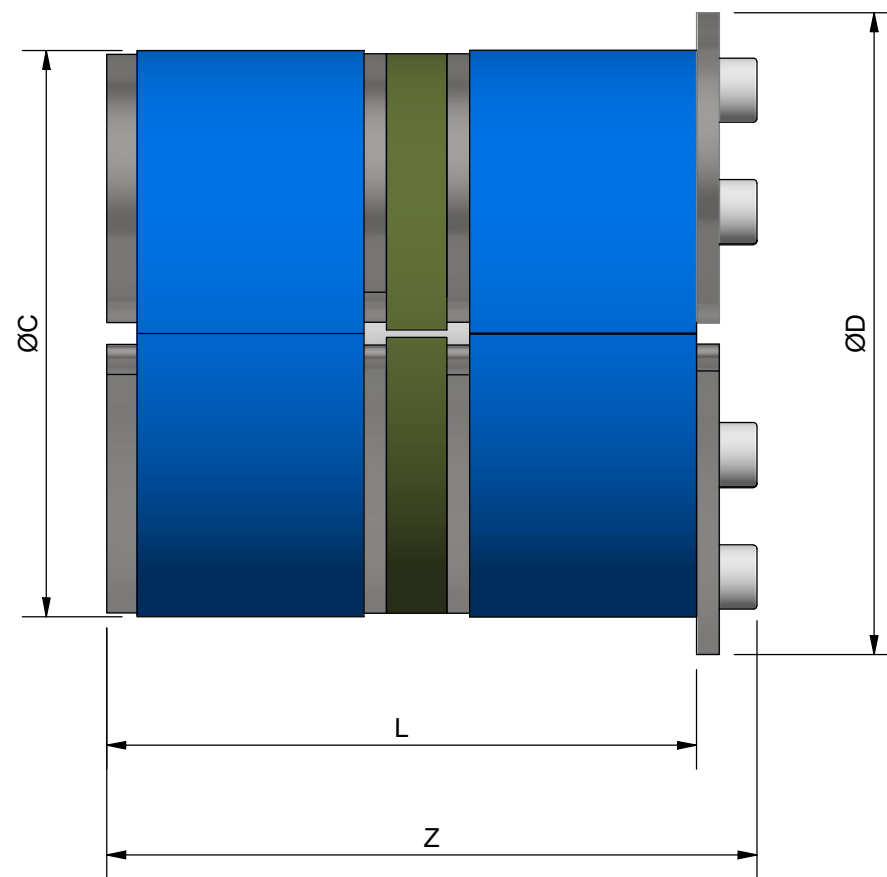
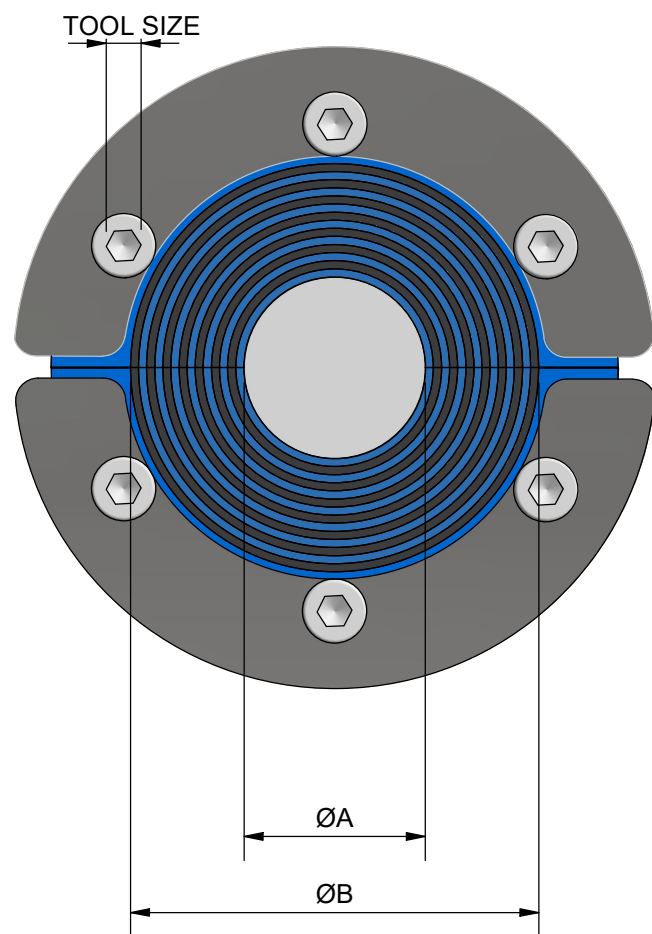
烙克赛克保留所有权利。未经授权严禁复制，使用以及向第三方泄露。

All rights reserved. Unauthorized reproduction, use or disclosure to third parties is strictly forbidden.


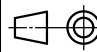
Rev 3.1

SEAL	A	B	C	D	L	Z	TOOL SIZE	Q
RS 31 PPS/S	4	17	31	37	38,5	43	2,5	4
RS 43 PPS/S	4	23	43	53	77	85	4	4
RS 50 PPS/S	8	30	50	60	77	85	4	4
RS 68 PPS/S	26	48	68	78	77	85	4	4
RS 75 PPS/S	24	54	75	85	77	85	4	6
RS 100 PPS/S*	48	70	100	110	77	86	4	6
RS 125 PPS/S*	66	98	125	145	76	88	5	6
RS 150 PPS/S WOC	93	119	150	170	76	88	5	8

* ALSO AVAILABLE IN WOC VERSION DELIVERED WITHOUT CORE.



9	1	LUBRICANT	
8	1	INSTALLATION INSTRUCTION	
7	2	INTUMESCENT MATERIAL	HEAT REACTIVE
6	Q	SCREW	ISO 4762 A4
5	2	FRONT FITTING	ACID PROOF STAINLESS STEEL
4	1	CORE	ROXYLON
3	4	MIDDLE FITTING	ACID PROOF STAINLESS STEEL
2	4	RUBBER FRAME	ROXYLON
1	2	REAR FITTING	ACID PROOF STAINLESS STEEL

ITEM	QTY	Designation	Specification				Weight
General tolerances used for manufacturing shown in document DOC-002180		Designed by/date se-dannil 2007-04-17	Latest save date 2024-02-15	Format A3	Scale	Sheet no 1 / 1	TotWeight 0,5 kg
		Title RS PPS/S SEALS RS PPS/S 31-150		Projection method 		Restricted due to Information drawing	
www.roxtec.com		Drawing number		S1011273		Rev J	

J	LAYOUT CHANGED	2024-02-15	se-jenboh
Rev	Type of revision	Date	Sign

Information drawings show general design and nominal dimensions if not else stated