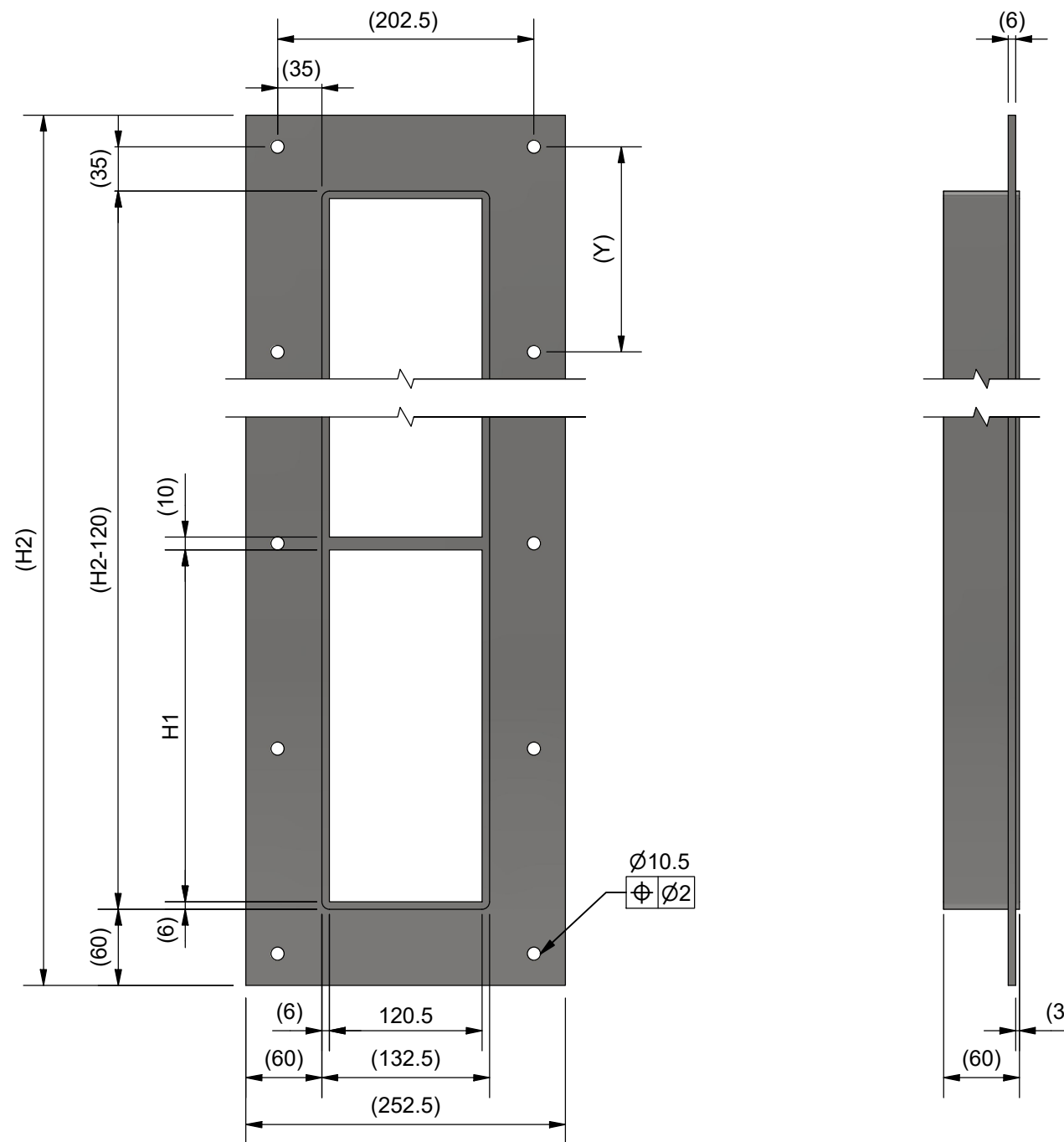
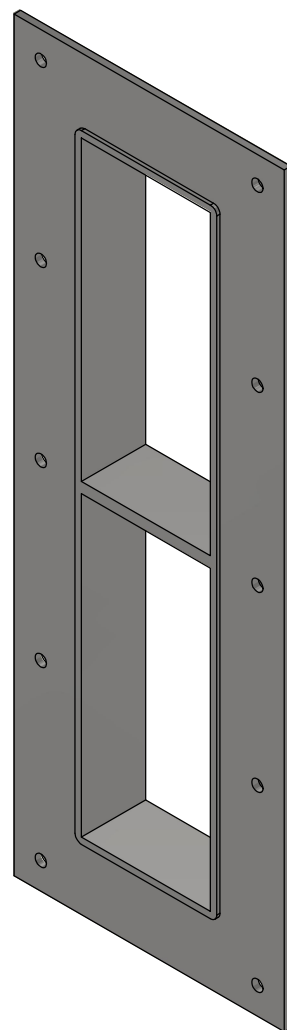

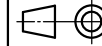


TYPE	ROWS [QTY]	H1 [mm]	H2 [mm]	Y [mm]	VERTICAL HOLES [QTY]
GH 2+2x1	2	101	344	147	3
GH 4+4x1	2	159.5	461	137	4
GH 6+6x1	2	218	578	176	4
GH 8+8x1	2	278	698	162	5
GH 2+2+2x1	3	101	455	135	4
GH 4+4+4x1	3	159.5	630.5	145.1	5
GH 6+6+6x1	3	218	806	151.2	6
GH 8+8+8x1	3	278	986	156	7
GH 2+2+2+2x1	4	101	566	172	4
GH 4+4+4+4x1	4	159.5	800	150	6
GH 6+6+6+6x1	4	218	1034	164	7
GH 8+8+8+8x1	4	278	1274	153	9

GH 8+8x1



C	LAYOUT CHANGED	2024-08-16	se-marfre
Rev	Type of revision	Date	Sign

General tolerances used for manufacturing shown in document DOC-002180		Designed by/date se-ronpet 2007-01-02	Latest save date 2024-08-26	Format A3	Scale	Sheet no 1 / 1	TotWeight
 www.roxtec.com		Title GH FRAME +SINGLE FRAME			Projection method 		Rev C
		Restricted due to Information drawing		Drawing number S1010381			