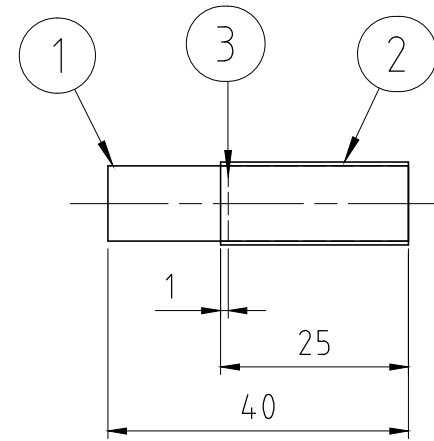
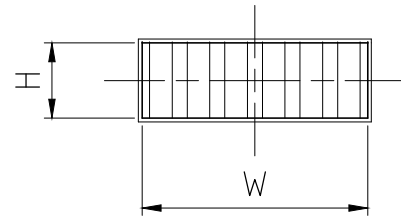


We reserve all rights in this document and in the information contained therein. Reproduction, use or disclosure to third parties without express authority is strictly forbidden. © ROXTEC INTERNATIONAL AB

TYPE	W (mm)	H (mm)
CM 5w40/0 ES	40	5
CM 10w40/0 ES	40	10
CM 20/0 ES	20	20
CM 40/0 ES	40	40



B	TABLE CORRECTED	2018-10-02	se-mikgru
Rev	Type of revision	Date	Sign

3	1	CONDUCTIVE RUBBER	-	
2	1	CONDUCTIVE TAPE	-	
1	2	RUBBER	ROXYLON	
Item	Qty	Designation	Specification	Net Weight
ROXTEC INTERNATIONAL AB BOX 540 S-371 23 Karlskrona TEL: +46 455 366700 FAX: +46 455 82012		Designed by <b>se-tonhal</b>	Date 2006-02-01	General tolerance DIN ISO 2768-1/2-m/K DIN ISO 13920-BF
		Checked by	Format A3	Welded details EN ISO 5817-B EN ISO 10042-B
		Approved by <b>se-ronpet</b>	Scale 1:1	General surface roughness, Ra 12,5
		Restricted due to Information drawing	Title CM ES MODULES EMC SOLID MODULES	Projection method 
			Drawing number S1008881	Rev B

