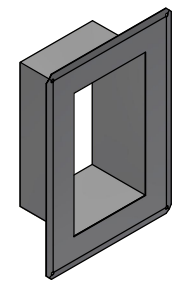


A (MM)				
SIZE (X)	X	X+X	X+X+X	X+X+X+X
1 & 2	115	227	339	451
3 & 4	173,5	344	514,5	685
5 & 6	232	461	690	919
7 & 8	292	581	870	1159

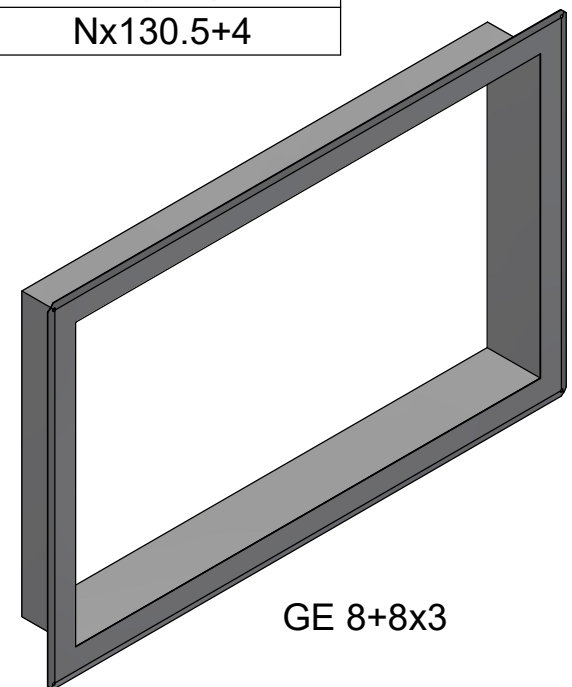
B (MM)	
COMBINATION	SIZE (X) 2,4,6,8
x1	134
x2	265
x3	396
x4	526
x5	657
x6	787
x7	918
x8	1048
x9	1179
x10	1309

B (MM)	
COMBINATION	SIZE (X) 1,3,5,7
x1	75
x2	144
x3	216
x4	286
x5	357
x6	427
x7	498
x8	568
x9	639
x10	709

COMBINATIONS >x10		
SIZE	COMB.	B (MM)
2,4,6,8	xN	Nx130.5+4



GE 6X1



GE 8+8x3

NOTE 1: T=0,9mm FOR GALVANIZED
T=0,7mm FOR ACID PROOF STAINLESS STEEL

NOTE 2: GE FRAMES FITS CORRESPONDING GH FRAME.
EXAMPLES:
GE 4+4x3 FRAME FITS A GH 4+4x3 FRAME
GE 8x2 FRAME FITS A GH 8x2 FRAME

K	TABLE UPDATED	2024-10-02	se-jenboh
Rev	Type of revision	Date	Sign

General tolerances used for manufacturing shown in document DOC-002180		Designed by/date se-andrek 2005-09-08	Latest save date 2024-10-02	Format A3	Scale	Sheet no 1 / 1	TotWeight 0,7 kg
 www.roxtec.com		Title GE FRAME EXTENSION FRAME			Projection method 		Rev K
		Restricted due to Information drawing			Drawing number S1008220		