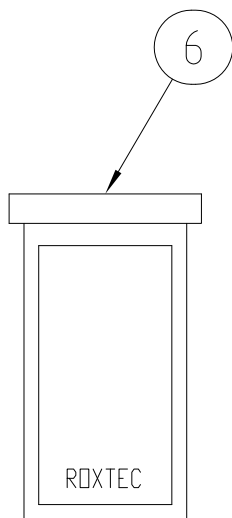
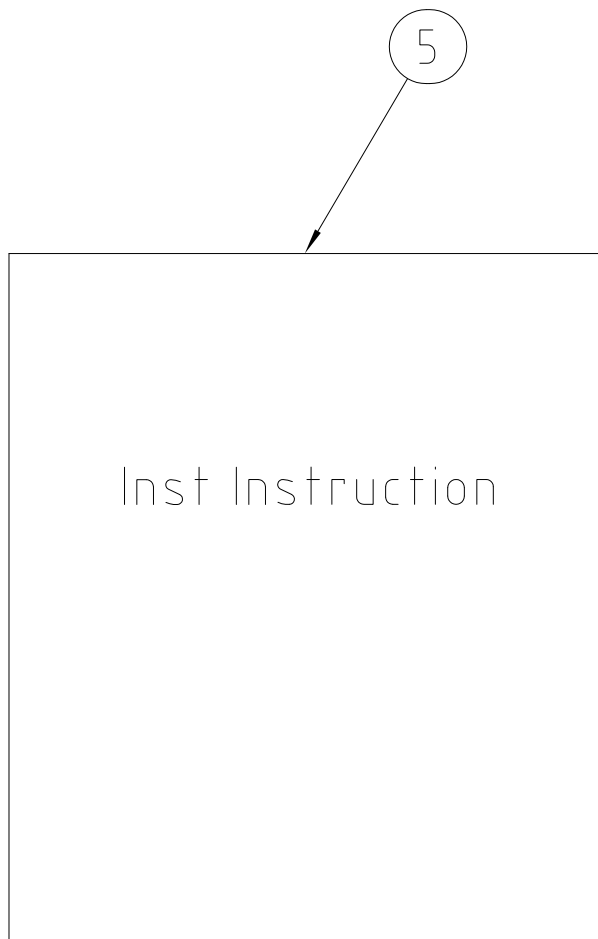
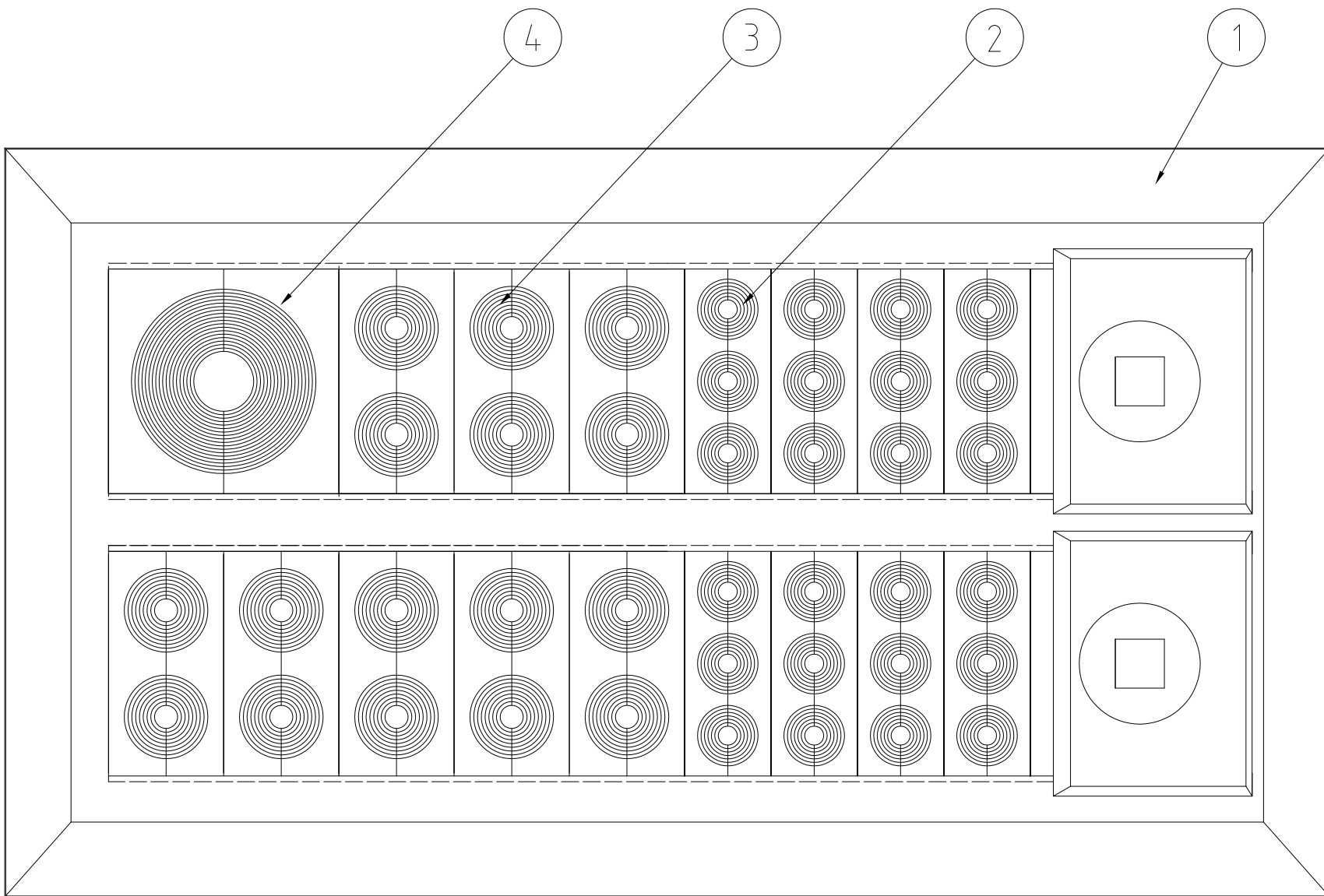



洛克赛克保留所有权利。未经授权严禁复制，
使用以及向第三方泄漏。

All rights reserved. Unauthorized reproduction, use
or disclosure to third parties is strictly forbidden.



Item	Qty	Designation	Specification	Net Weight
6	1	ROXTEC LUBRICANT	25 ML	-
5	1	INSTALLATION INSTRUCTION		-
4	1	CM 40 10-32	0+9.5-32.5MM	-
3	8	CM 20W40	0+3.5-16.5MM	-
2	8	CM 15w40	0+3.5-10.5MM	-
1	1	CF 32		-

General tolerance	Welded details	General surface	Designed by	Created Date	Approved by	Approved Date	Format	Scale	Total Weight
ISO 2768-1/2-m/K EN ISO 13920-BF	EN ISO 5817-B EN ISO 10042-B	General surface roughness, Ra 12,5	se-joahel	2004-02-16	se-jorake	2014-02-14	A3	1:1	
			Title		Projection method				
www.roxtec.com			CF 32/41		ASSEMBLY KIT				
Restricted due to			Information Drawing		Drawing number		Rev		
					S1005906		B		

Rev	Type of revision	Date	Sign
B	ITEM 3 - QTY: 8 WAS 16	2014-02-13	se-emikul