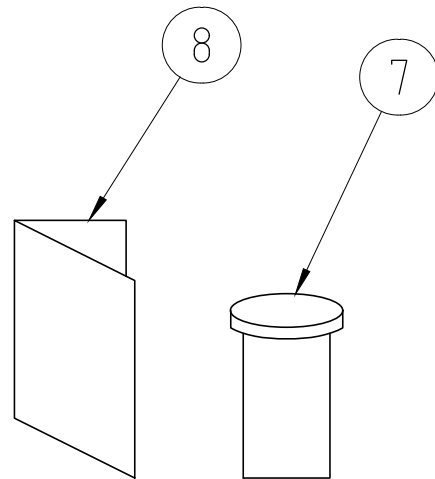
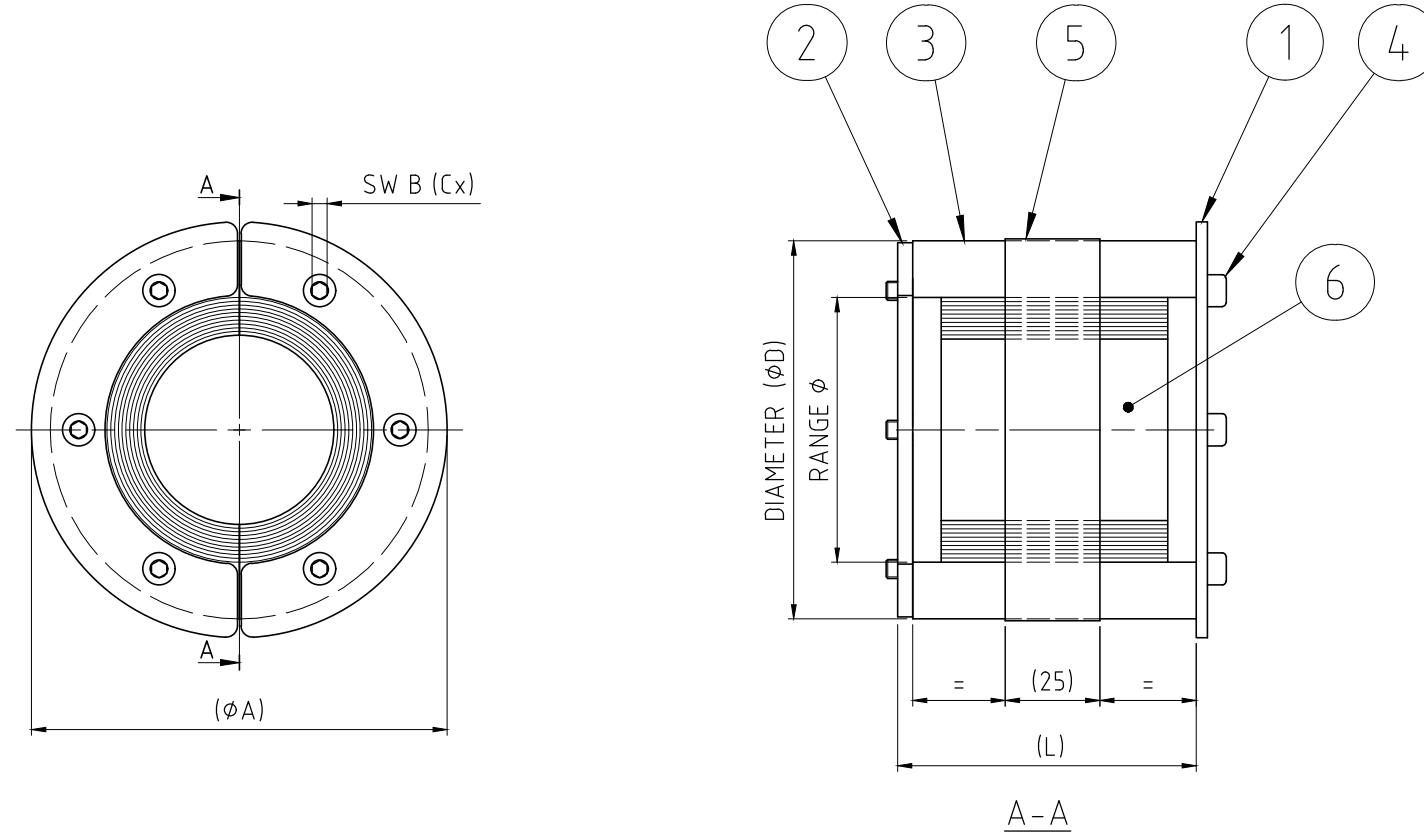


烙克囊克保留所有权利。未经授权严禁复制，使用以及向第三方泄漏。

All rights reserved. Unauthorized reproduction, use or disclosure to third parties is strictly forbidden.

Rev 2.0

RS PE SEALS								RS PE WOC SEALS (WITHOUT CORE)							
SIZE	A	B	C	D	E	RANGE ϕ	L	SIZE	A	B	C	D	E	RANGE ϕ	L
RS 75 PE	85	4	6	75	1	0+24-54	77	RS 75 PE WOC	85	4	6	75	0	24-54	77
RS 100 PE	100	4	6	100	1	0+48-70	77	RS 100 PE WOC	100	4	6	100	0	48-70	77
RS 125 PE	125	5	6	125	1	0+66-98	79	RS 125 PE WOC	125	5	6	125	0	66-98	79
								RS 150 PE WOC	150	5	8	150	0	93-119	79



NOTE:

The range of the Roxtec Seal indicates the smallest possible diameter of the dismantled cable screen to the largest possible diameter of the cable mantle.

8	1	INSTALLATION INSTRUCTION		
7	1	ROXTEC LUBRICANT		
6	E	CORE	ROXYLON	
5	2	CONDUCTIVE TAPE	TINPLATED COPPER	
4	C	SCREW	MC6S A4	
3	2	RUBBER FRAME	ROXYLON	
2	2	REAR FITTING	ACID PROOF STAINLESS STEEL	
1	2	FRONT FITTING	ACID PROOF STAINLESS STEEL	

Item	Qty	Designation	Specification				Net Weight	
General tolerances used for manufacturing shown in document DOC-002180		Designed by	Created Date	Latest save date	Format	Scale	Sheet no	Total Weight
		se-joahel	2004-01-13	2024-01-22	A3	1:2		-
		Title				Projection method		
		RS PE SEALS						
		RS 75-150 PE						
		Restricted due to				Rev		
		Information drawing				E		
		Drawing number				S1005805		

E		2024-01-22	se-parham
Rev	Type of revision	Date	Sign