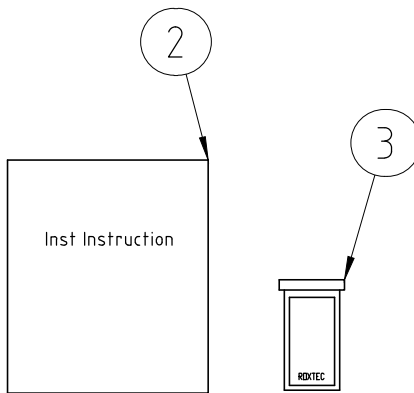
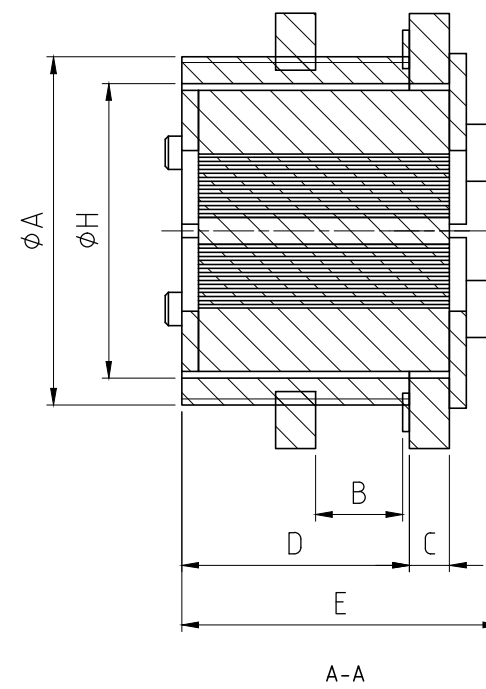
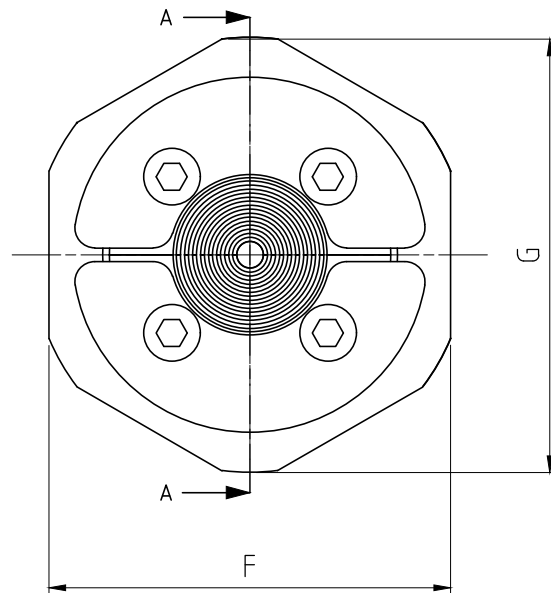
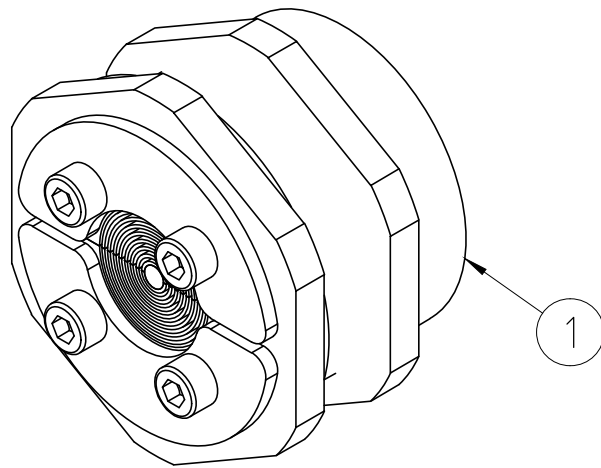


洛克赛克保留所有权利。未经授权严禁复制，  
使用以及向第三方泄露。

All rights reserved. Unauthorized reproduction, use  
or disclosure to third parties is strictly forbidden.

Rev 3.1

TYPE	C R S T 25	C R S T 31	C R S T 43	C R S T 50
DIMENSIONS	mm	mm	mm	mm
CABLE DIAMETER	0+3.6-12	0+4-17	0+4-23	0+8-30
THREAD	M32x1.5	M40x1.5	M50x1.5	M63x1.5
REC HOLECUT	33	41	52	64
A	32	40	50	63
B	1-10	1-8	1-28	1-26
C	4	5	5	6
D	16	15	35	34
E	25	25	48	48
F	36	46	60	70
G	39	50	65	78
H	25	31	43	50



3	1	LUBRICANT	TALLOW	
2	1	INSTALLATION INTRUCTION		
1	1	C R S T SEAL	NICKEL PLATED BRASS / AISI316	
Item	Qty	Designation	Specification	Net Weight
General tolerances used for manufacturing shown in document DOC-002180		Designed by se-joahel	Created Date 2003-12-29	Latest save date 2024-06-14
Format A3		Scale 1:1	Sheet no	TotWeight -
		Title C R S T ASSEMBLY		Projection method 
www.roxtec.com		Restricted due to Information drawing		Drawing number S1005785
Rev		Date		Rev E

E		2024-06-14	se-henols
Rev	Type of revision	Date	Sign

Information drawings show general design and nominal dimensions if not else stated