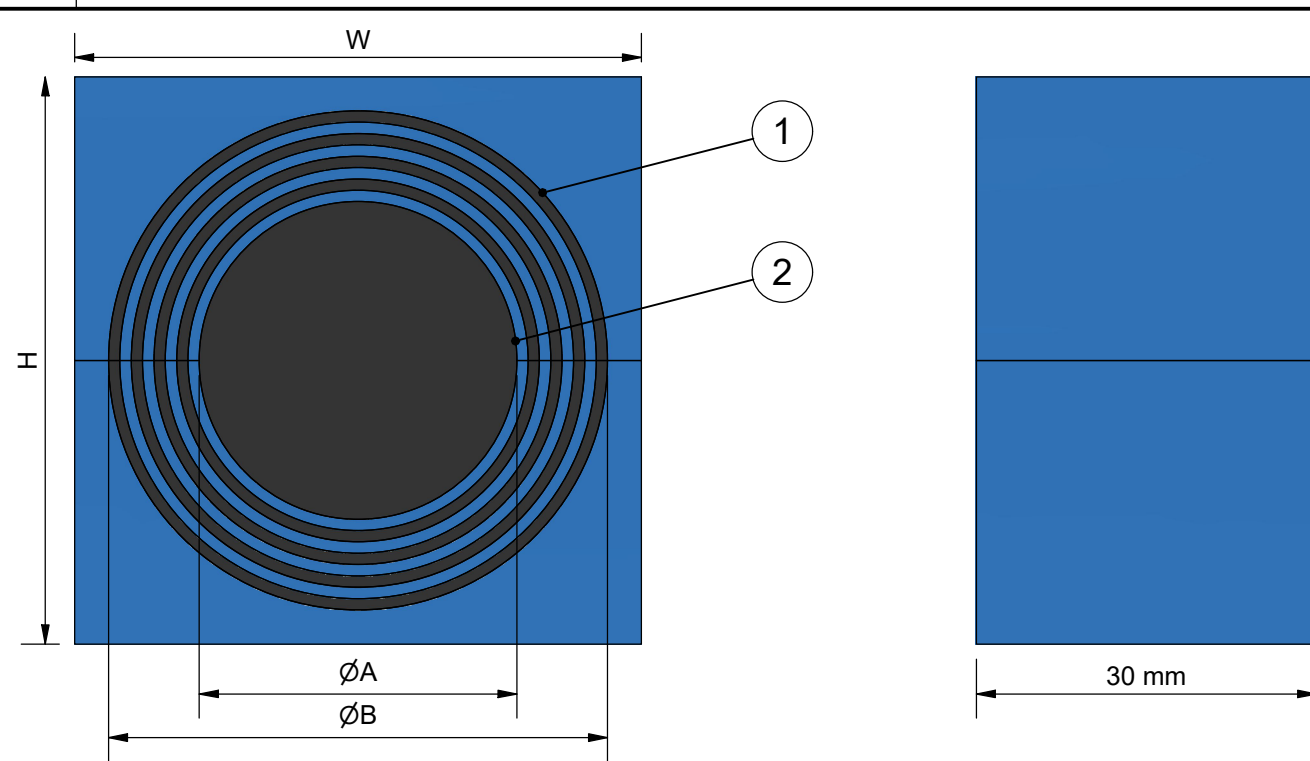
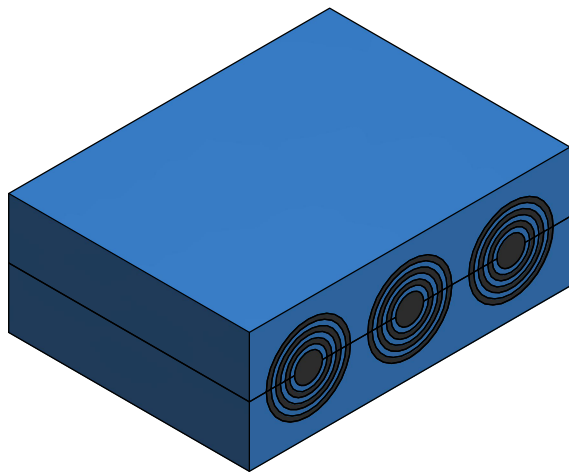


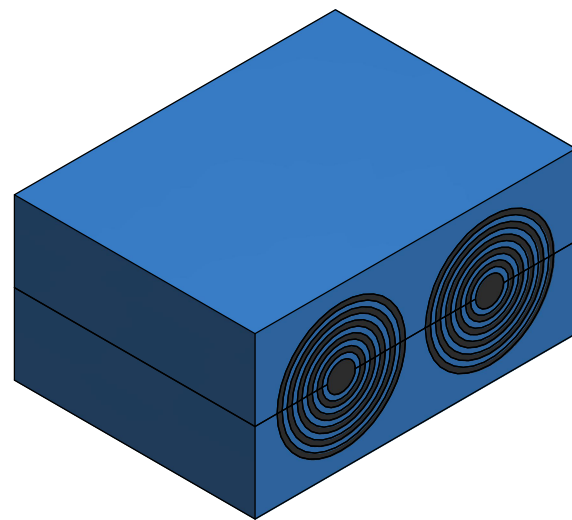
TYPE	CABLE/PIPE Ø (A-B) [mm]	H [mm]	W [mm]	C [QTY]
CM 15	3 - 11	15	15	1
CM 15w40	3.5 - 10.5	15	40	3
CM 20	4 - 14.5	20	20	1
CM 20w40	3.5 - 16.5	20	40	2
CM 30	10 - 25	30	30	1
CM 30w40	10 - 25	30	40	1
CM 40	21.5 - 34.5	40	40	1
CM 40 10-32	9.5 - 32.5	40	40	1
CM 50	28 - 44	50	50	1



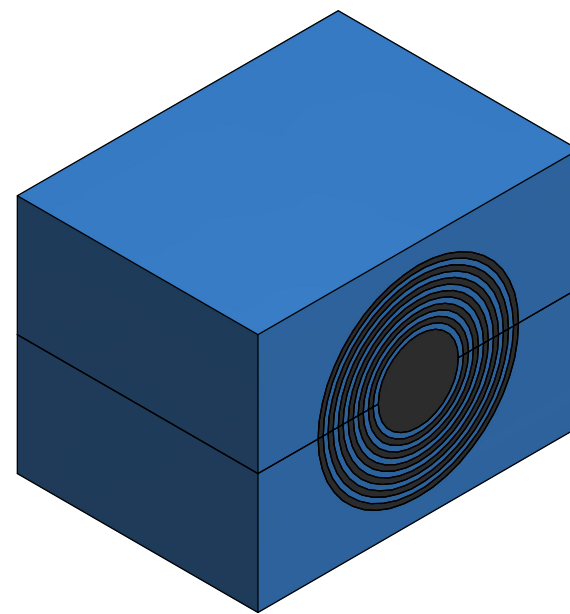
CM 15w40



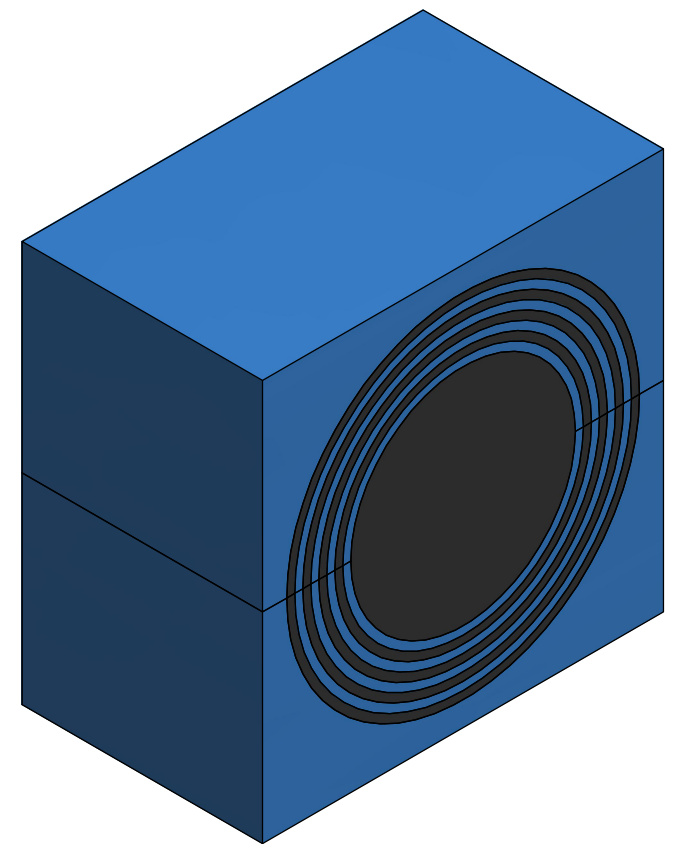
CM 20w40



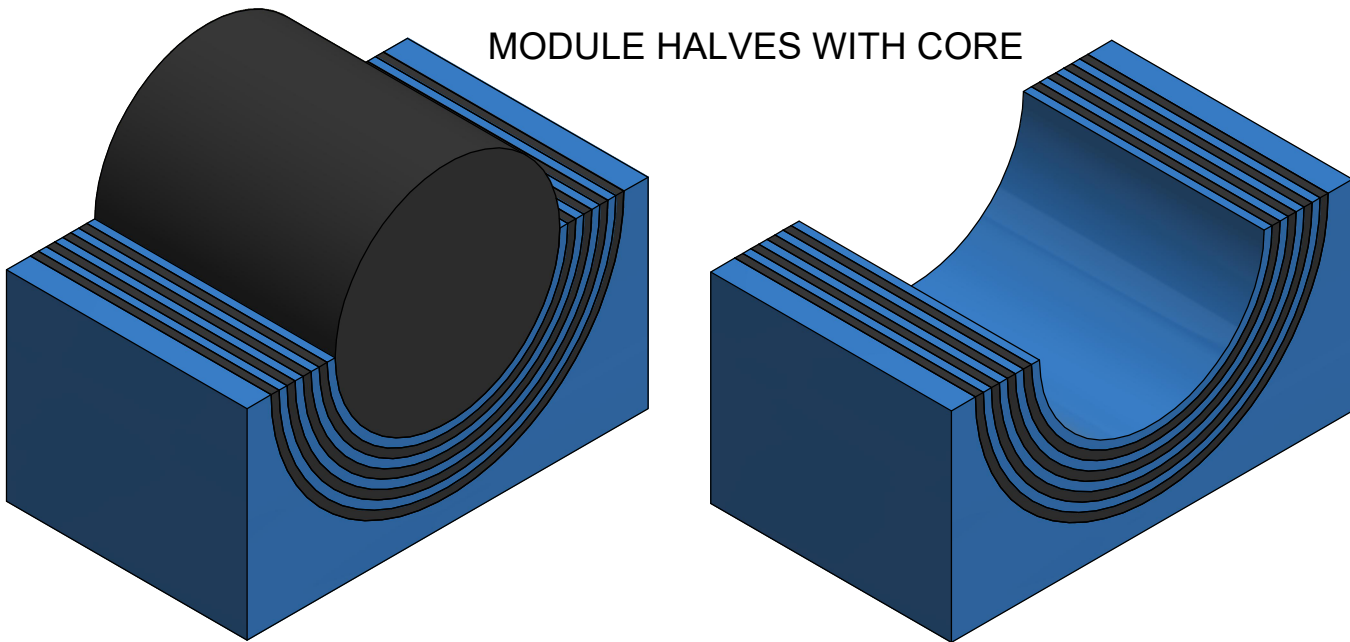
CM 30w40


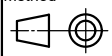


CM 20-50



MODULE HALVES WITH CORE



2	C	CORE	ROXYLON			
1	2	RUBBER PROFILE	ROXYLON			
ITEM	QTY	Designation	Specification			Weight
General tolerances used for manufacturing shown in document DOC-002180		Designed by/date se-joahel 2003-12-29	Latest save date 2024-07-05	Format A3	Scale	Sheet no 1 / 1
		Title <b>CM MODULES ASSEMBLY</b>			Projection method 	
www.roxtec.com		Restricted due to Information drawing			Drawing number <b>S1005784</b>	
Rev		Type of revision			Rev <b>E</b>	

E	LAYOUT CHANGED	2024-06-25	se-marfre
Rev	Type of revision	Date	Sign