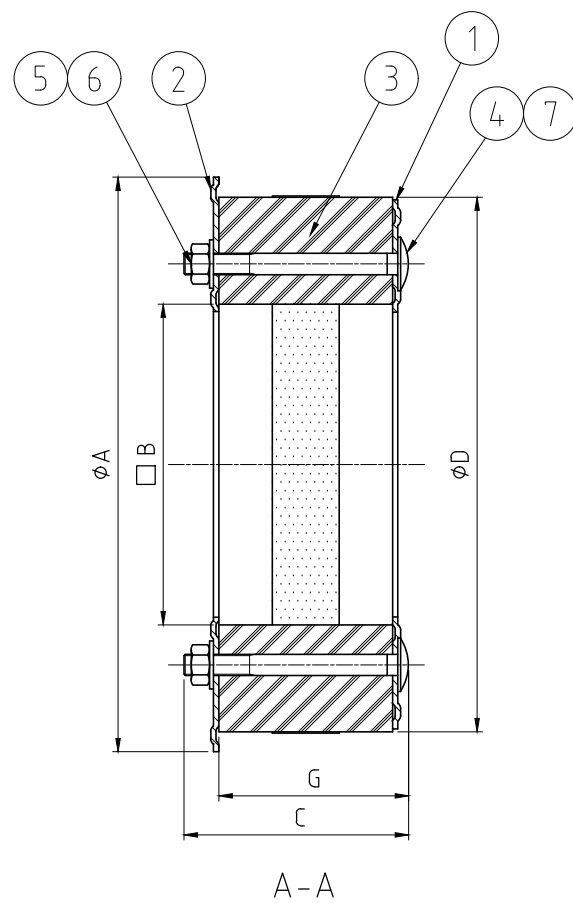
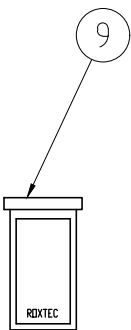
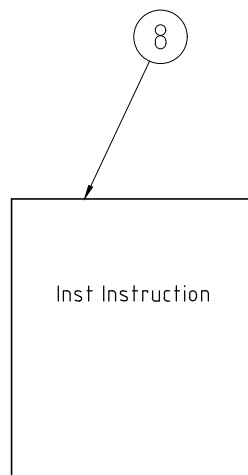
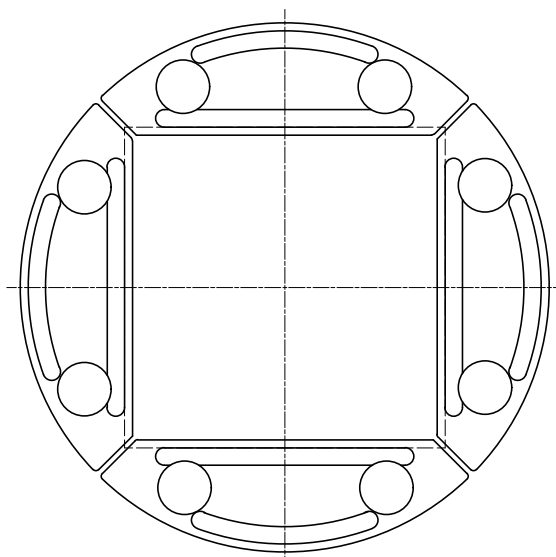


TYPE	A	B	C	D	E	F	G
R 125 EMC	142	80	85	125	148	10	72
R 127 EMC	142	80	85	127	148	10	72
R 150 EMC	165	90	85	150	171	13	73
R 200 EMC	215	120	85	200	223	13	73

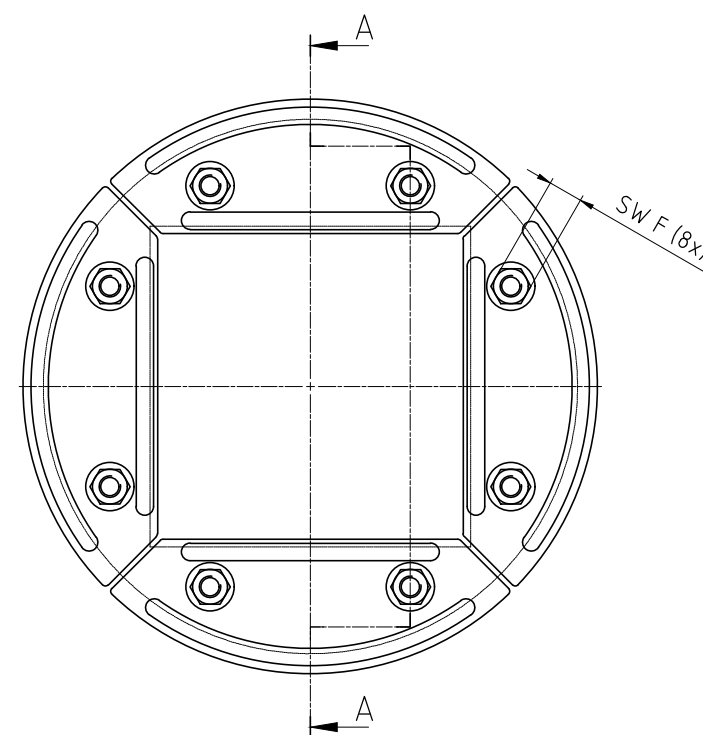
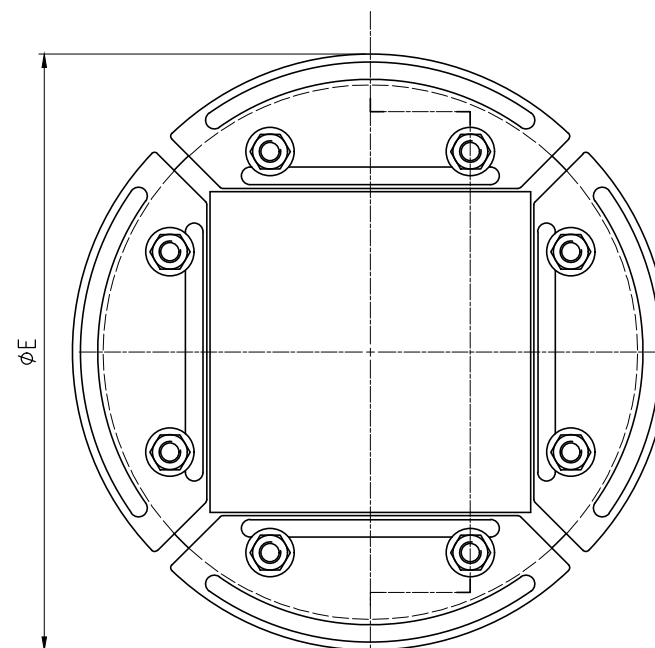
烙克賽克保留所有權利。未經授權嚴禁复制，使用以及向第三方泄漏。

All rights reserved. Unauthorized reproduction, use or disclosure to third parties is strictly forbidden.

Rev 2.0



FITTINGS IN OUTER POSITION



Item	Qty	Designation	Specification	Net Weight
9	1	LUBRICANT		-
8	1	INSTALLATION INSTRUCTION		-
7	8	GASKET MVBF	EPDM	-
6	8	WASHER	A4	-
5	8	NUT	A4	-
4	8	OVAL HEAD SCREW	A4	-
3	1	RUBBER FRAME	ROXYLON	-
2	4	FRONT FITTING	ACID PROOF STAINLESS STEEL	-
1	4	REAR FITTING	ACID PROOF STAINLESS STEEL	-

General tolerance ISO 2768-1/2-M/K	Welded details EN ISO 5817-B	General surface roughness, Ra 12.5	Designed by se-joahel	Created Date 2003-12-29	Approved by se-jenboh	Approved Date 2024-01-22	Format A4	Scale 1:2	Net Weight
Title R 125-200 EMC ASSEMBLY		www.roxtec.com		Information drawing		Drawing number S1005778		Rev F	

F		2024-01-22	se-parham
Rev	Type of revision	Date	Sign

Information drawings show general design and nominal dimensions if not else stated