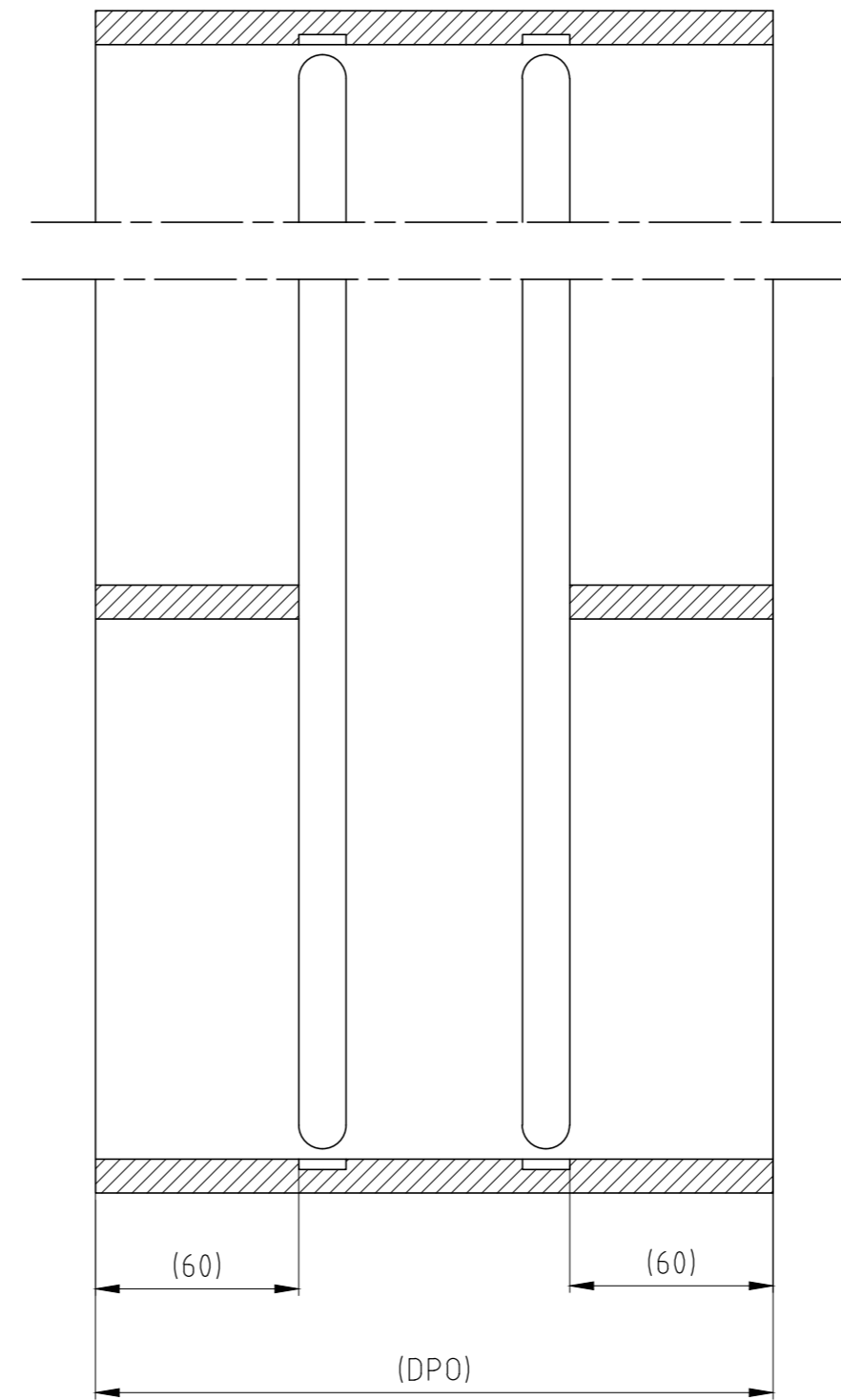
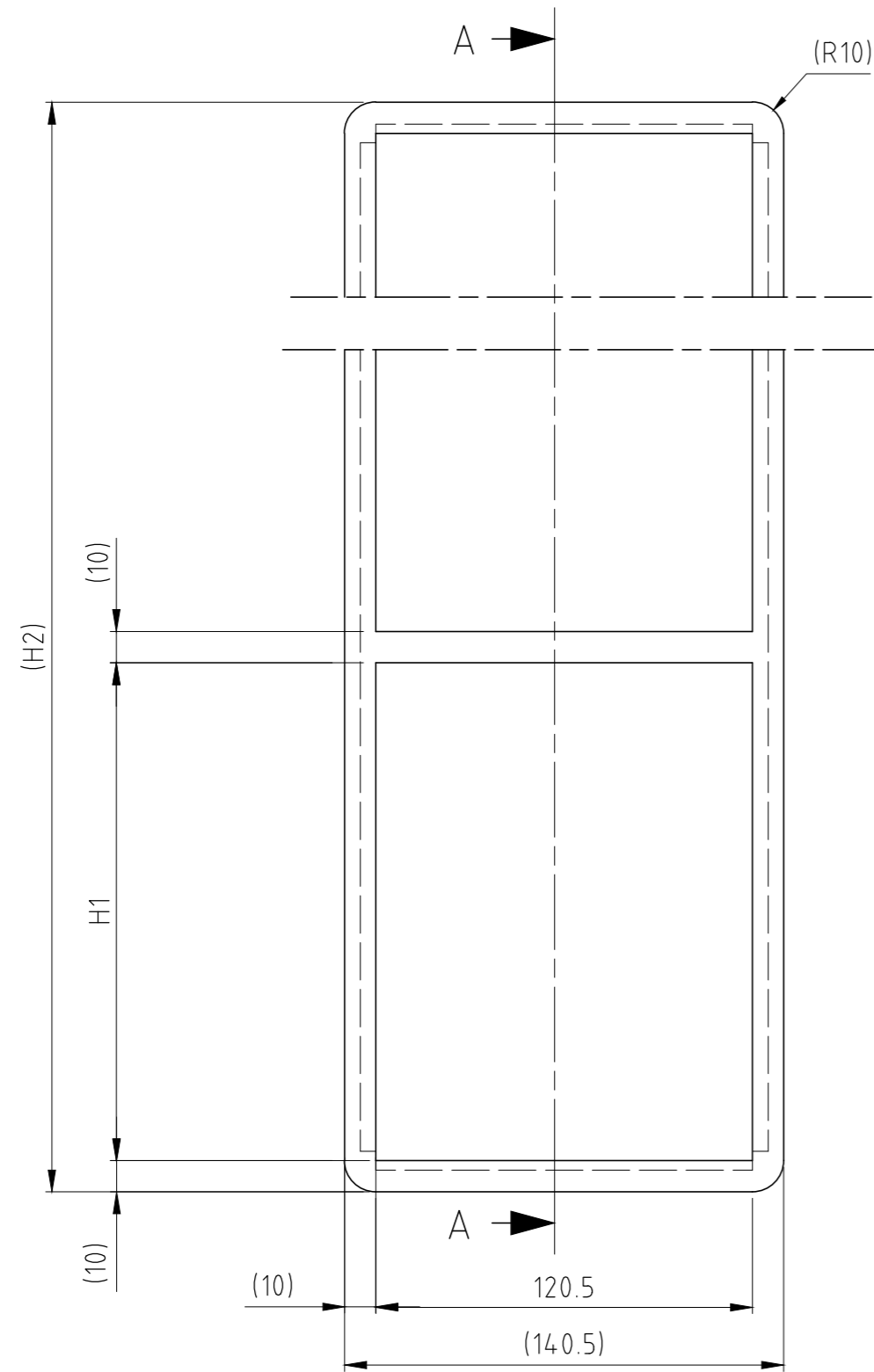


洛克赛克保留所有权利。未经授权严禁复制，  
使用以及向第三方泄漏。

All rights reserved. Unauthorized reproduction, use  
or disclosure to third parties is strictly forbidden.

Rev 2.0



A - A

DPO= DIMENSION VIA PURCHASE ORDER  
STANDARD DPO = 200

### COMBINATION



TYPE	H1 (mm)	H2 (mm)
SBTB 2+2x1	101	232
SBTB 4+4x1	159.5	349
SBTB 6+6x1	218	466
SBTB 8+8x1	278	586
SBTB 2+2+2x1	101	343
SBTB 4+4+4x1	159.5	518.5
SBTB 6+6+6x1	218	694
SBTB 8+8+8x1	278	874
SBTB 2+2+2+2x1	101	454
SBTB 4+4+4+4x1	159.5	688
SBTB 6+6+6+6x1	218	922
SBTB 8+8+8+8x1	278	1162

### SPECIAL COMBINATION

SIZE (mm)	H2 (mm)
H1	Rx(H1+10)+10

R=TOTAL NUMBERS OF ROWS

E	UPDATED TITLE BORDER	2019-05-03	se-linado
Rev	Type of revision	Date	Sign

Item	Qty	Designation	Specification				NetWeight	
General tolerances used for manufacturing shown in document 00C-00780		Designed by	Created Date	Latest save date	Format	Scale	Sheet no	TotWeight
		se-luckri	2003-12-19	2019-05-09	A2	1:2		-
 www.roxtec.com		Title SBTB FRAME (M) + SINGLE FRAME		Restricted due to Information drawing		Drawing number S1005768		Projection method  Rev E

Information drawings show general design and nominal dimensions if not else stated