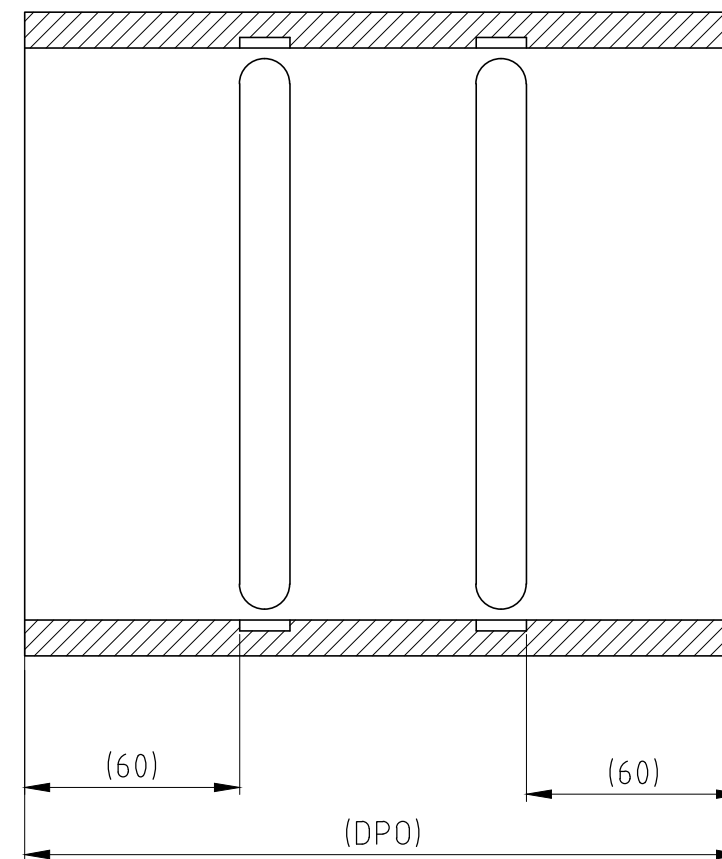
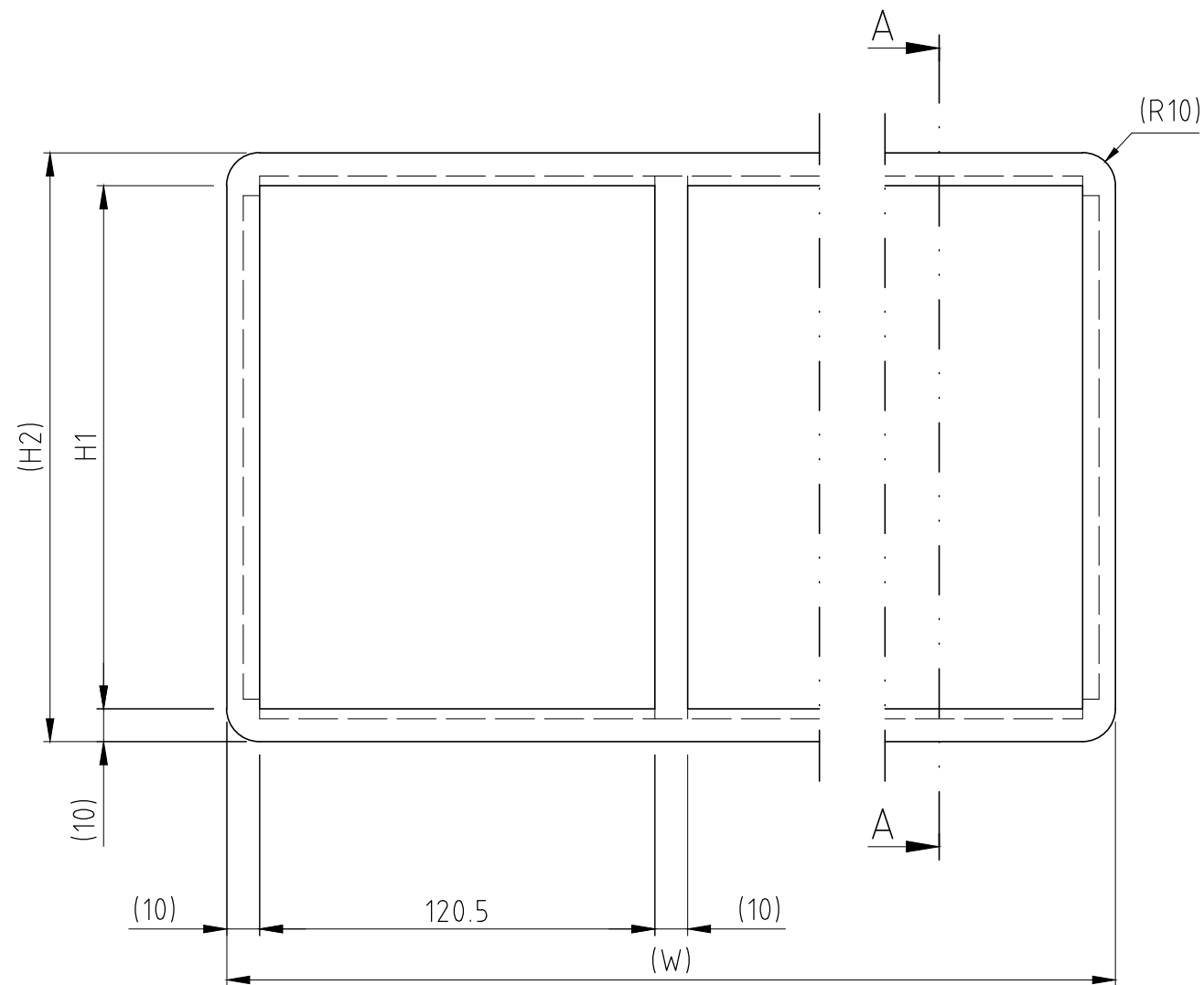


烙克赛克保留所有权利。未经授权严禁复制，
使用以及向第三方泄漏。

All rights reserved. Unauthorized reproduction, use
or disclosure to third parties is strictly forbidden.



A - A

SIZE:

TYPE	H1 (mm)	H2 (mm)
SBTB 2xN	101	121
SBTB 4xN	159.5	179.5
SBTB 6xN	218	238
SBTB 8xN	278	298

COMBINATION:

COMB. (N)	W (mm)
x2	271
x3	401.5
x4	532
x5	662.5
x6	793
x7	923.5
x8	1054
x9	1184.5
x10	1315


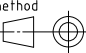
SPECIAL COMBINATION:

COMB.	W (mm)
xN	Nx130,5+10

DPO= DIMENSION VIA PURCHASE ORDER
STANDARD DPO = 200

Rev 2.0

H	UPDATED TITLE BORDER	2019-05-03	se-linado
Rev	Type of revision	Date	Sign

Item	Qty	Designation	Specification					NetWeight
<small>General tolerances used for manufacturing shown in document DDC-002180</small>		Designed by se-luckri	Created Date 2003-12-19	Latest save date 2019-05-07	Format A3	Scale 1:2	Sheet no	TotWeight -
 www.roxtec.com		Title SBTB FRAME (M) COMBINATION FRAME					Projection method 	
		Restricted due to Information drawing					Drawing number S1005767	Rev H

Information drawings show general design and nominal dimensions if not else stated