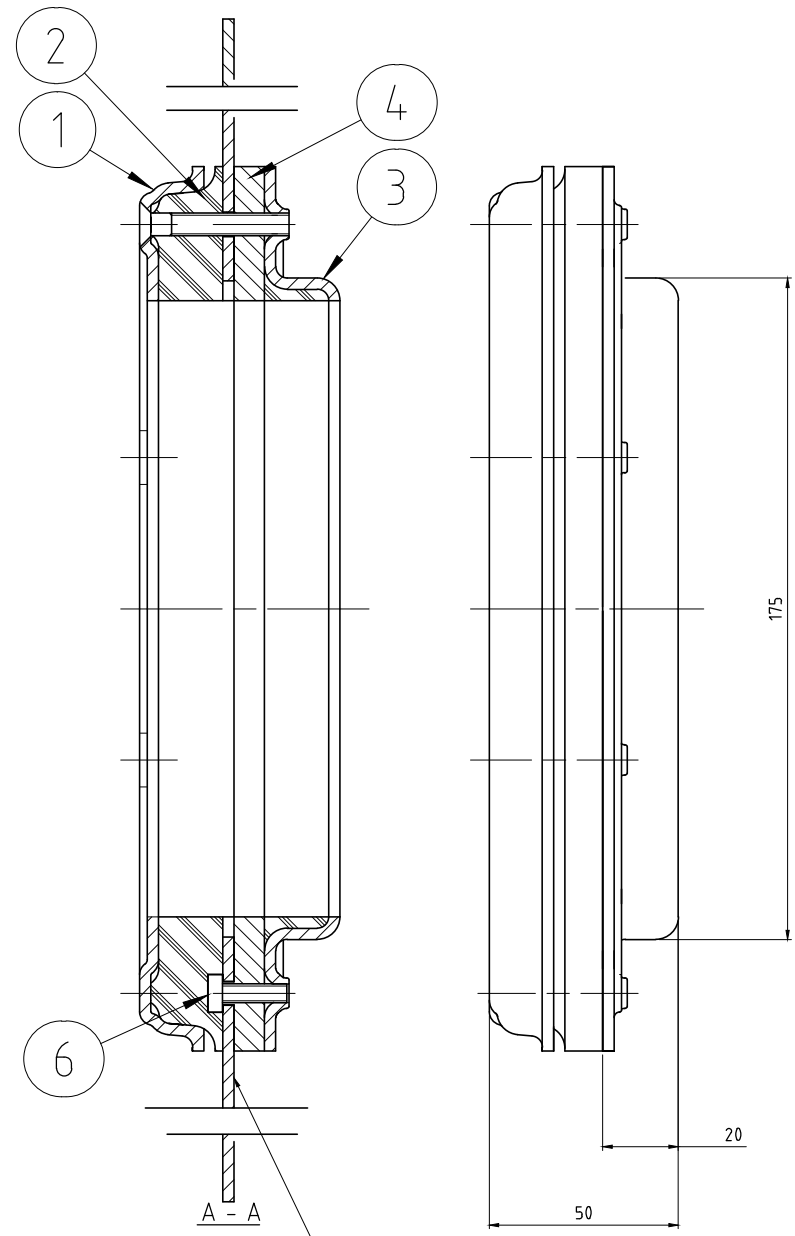
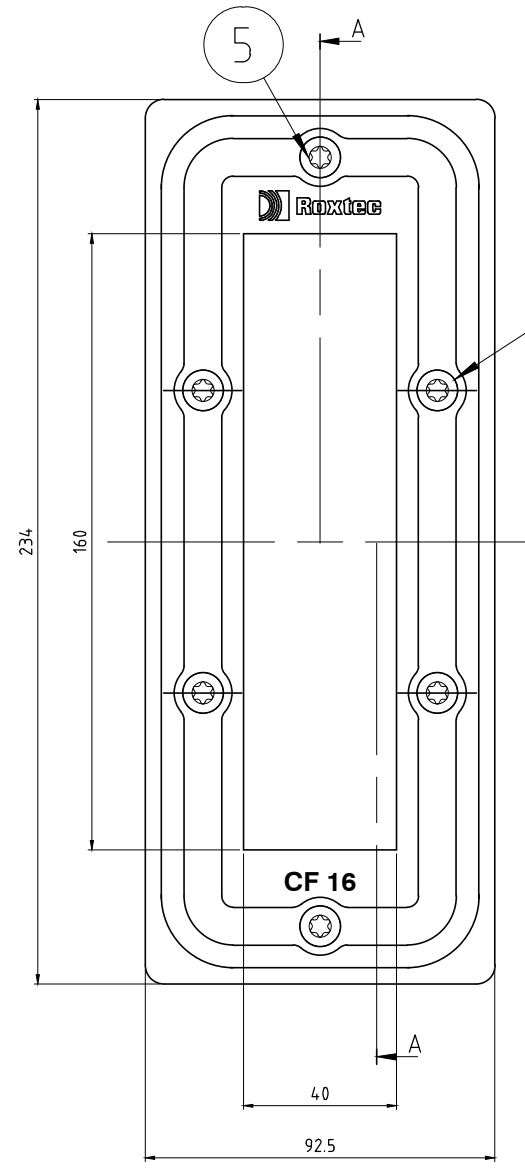


洛克赛克保留所有权利。未经授权严禁复制，使用以及向第三方泄漏。

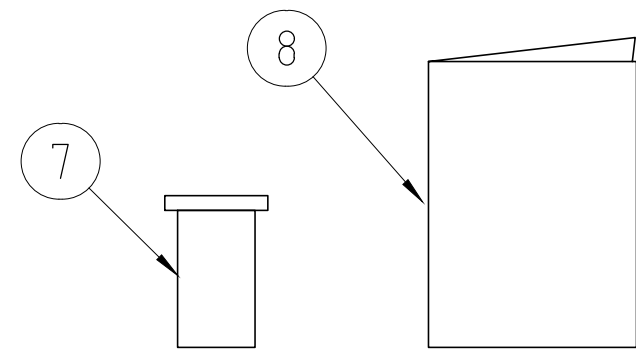
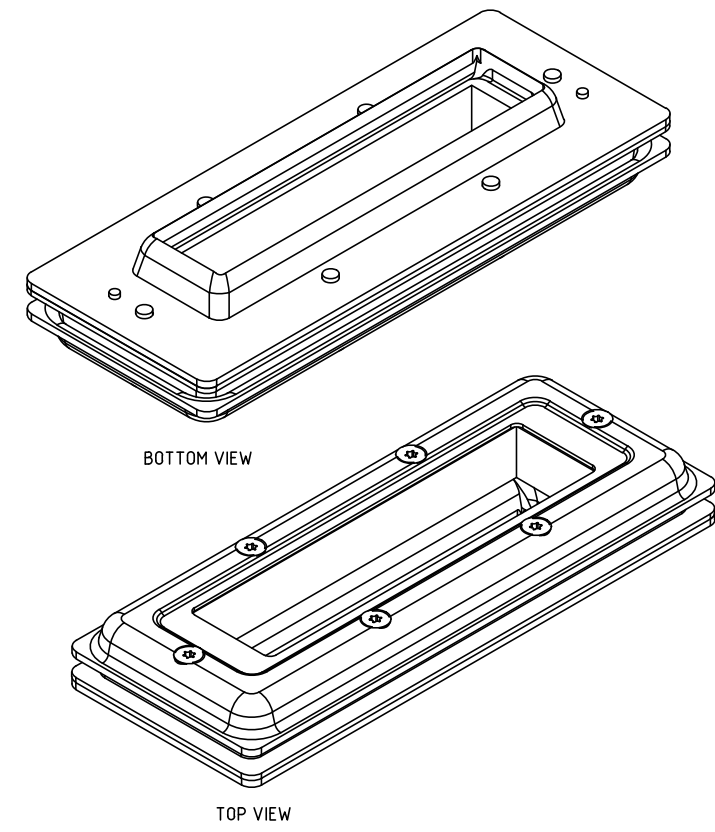
All rights reserved. Unauthorized reproduction, use or disclosure to third parties is strictly forbidden.




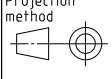
NOTE:
CABINETTE WALL MAX. T=4mm



SW TX30 (6x)



Item	Qty	Designation	Specification	Net Weight
8	1	INSTALLATION INSTRUCTION		
7	1	LUBRICANT		
6	2	FASTENERS	SCREW M5 A4	
5	6	FASTENERS	SCREW M6 A4	
4	1	EMC PLATE	NICKELPLATED ALUMINUM	
3	1	BACK PIECE	AISI 304 OR GALVANIZED MILD STEEL	
2	1	COMPRESSION RUBBER	NITRIL	
1	1	FRONT PIECE	AISI 304 OR POWDER COAT MILD STEEL	

General tolerances used for manufacturing shown in document DOC-002180		Designed by	Created Date	Latest save date	Format	Scale	Sheet no	Net Weight
		se-joahel	2003-12-17	2022-12-06	A3	1:2		-
 www.roxtec.com		Title			Projection method			
		CF 16 EMC ASSEMBLY						
Rev		Date		Sign		Drawing number		Rev
F		2022-12-06		se-henols		S1005743		F

Rev 3.0

F	TORX WRENCH REMOVED	2022-12-06	se-henols
Rev	Type of revision	Date	Sign

Information drawings show general design and nominal dimensions if not else stated