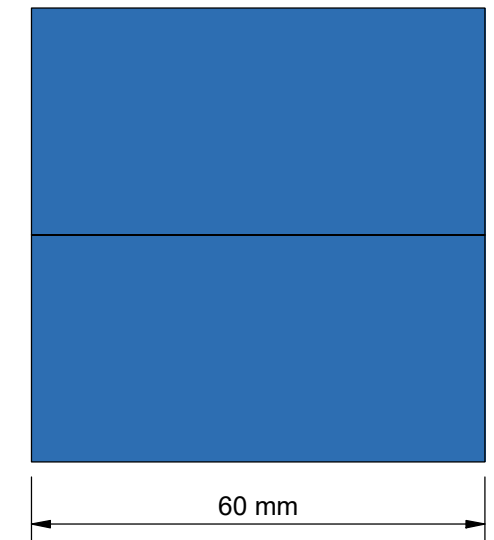
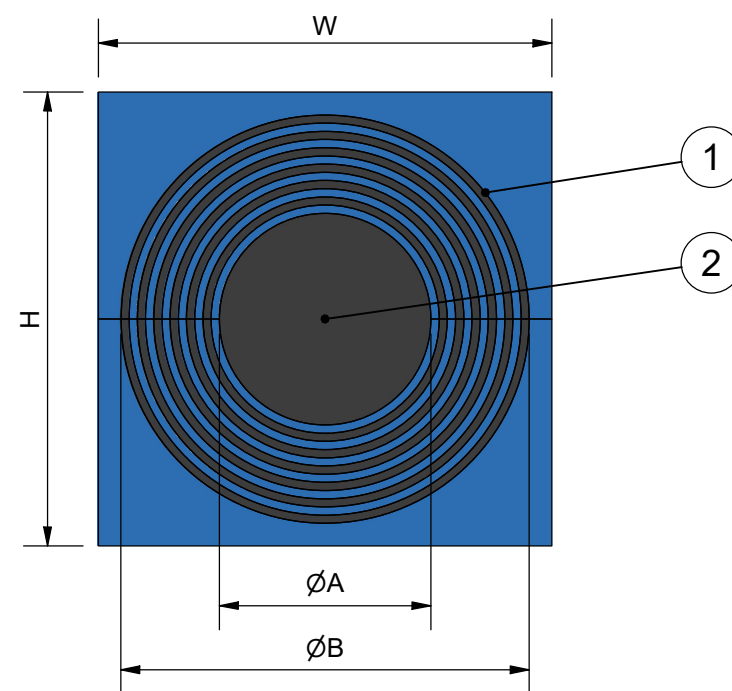
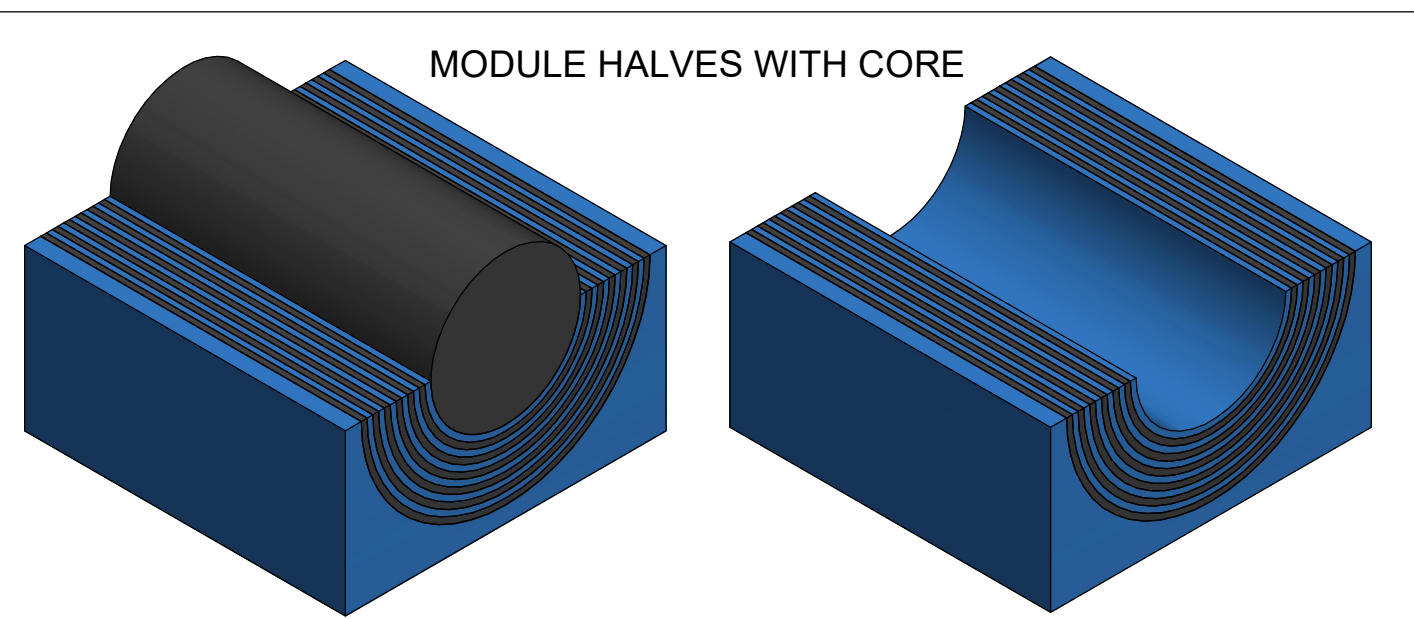
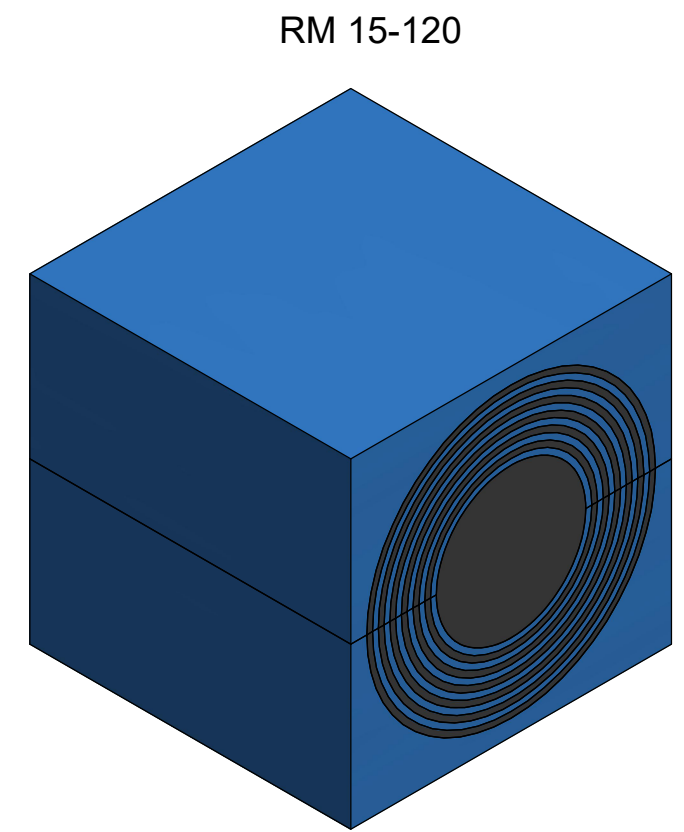
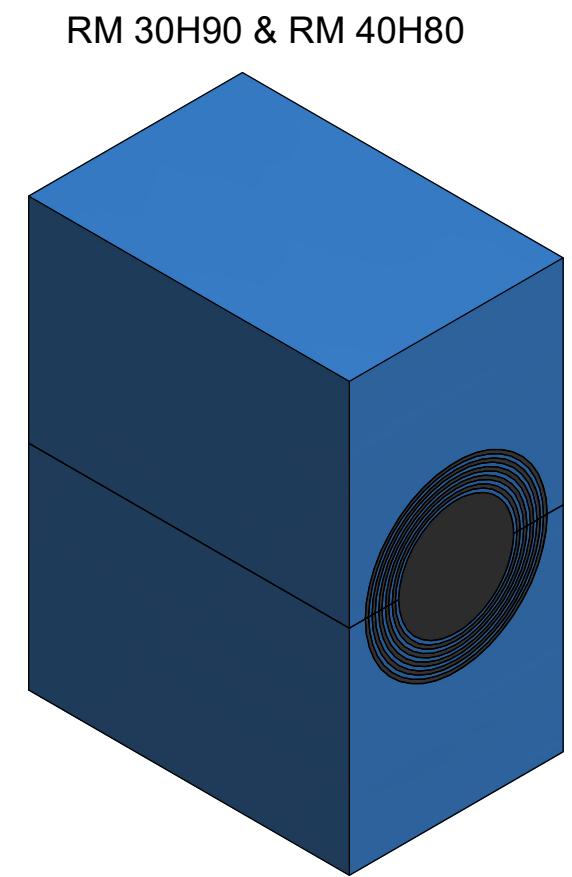
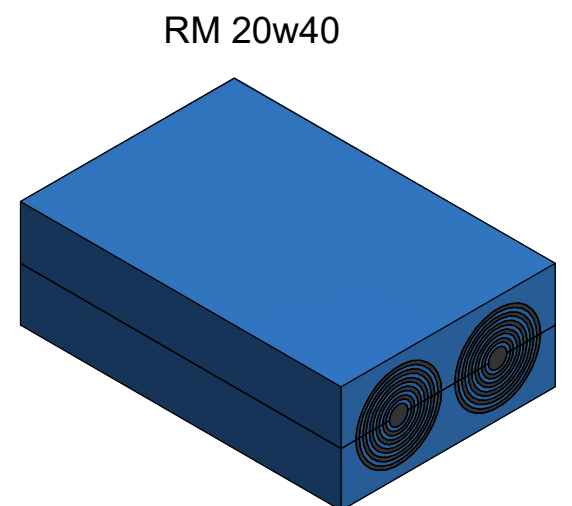
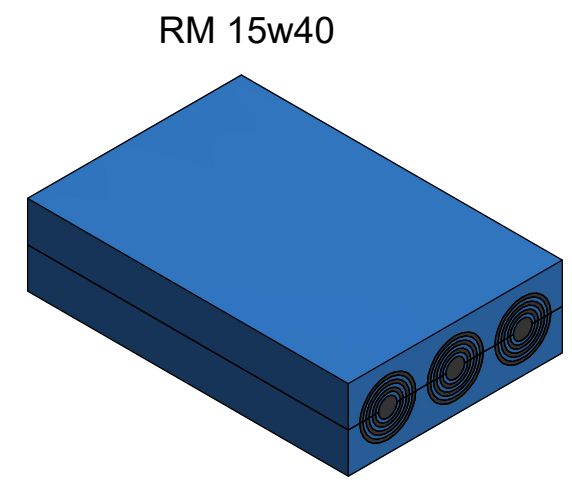


TYPE	CABLE/PIPE Ø (A-B) [mm]	H [mm]	W [mm]	C [QTY]
RM 15	3 - 11	15	15	1
RM 15w40	3.5 - 10.5	15	40	3
RM 20	4 - 14.5	20	20	1
RM 20w40	3.5 - 16.5	20	40	2
RM 30	10 - 25	30	30	1
RM 30 H90	10 - 25	30	90	1
RM 40	21.5 - 34.5	40	40	1
RM 40 H80	21.5 - 34.5	40	80	1
RM 40 10-32	9.5 - 32.5	40	40	1
RM 60*	28 - 54	60	60	1
RM 60 24-54	24 - 54	60	60	1
RM 80*	48 - 71	80	80	1
RM 90*	48 - 71	90	90	1
RM 120*	67.5 - 99	120	120	1



*ALSO AVAILABLE IN WOC VERSION DELIVERED WITHOUT CORE



2	C	CORE	ROXYLON			
1	2	RUBBER PROFILE	ROXYLON			
ITEM	QTY	Designation	Specification		Weight	
General tolerances used for manufacturing shown in document DOC-002180		Designed by/date se-joahel 2003-12-12	Latest save date 2024-07-03	Format A3	Scale Sheet no 1 / 1	TotWeight
 www.roxtec.com		Title RM MODULES ASSEMBLY		Projection method 		
		Restricted due to Information drawing		Drawing number S1005711		Rev F

F	LAYOUT CHANGED	2024-06-25	se-marfre
Rev	Type of revision	Date	Sign