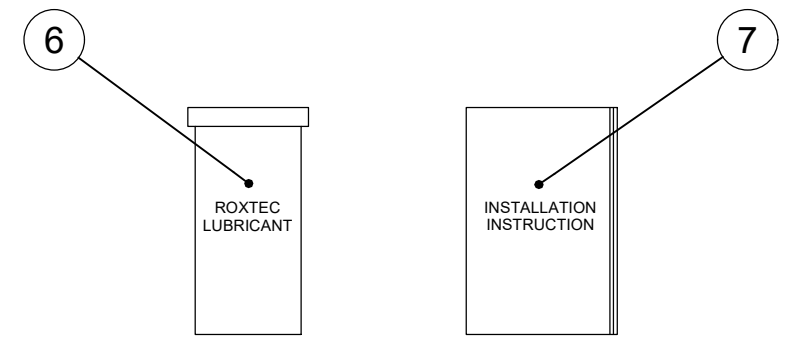
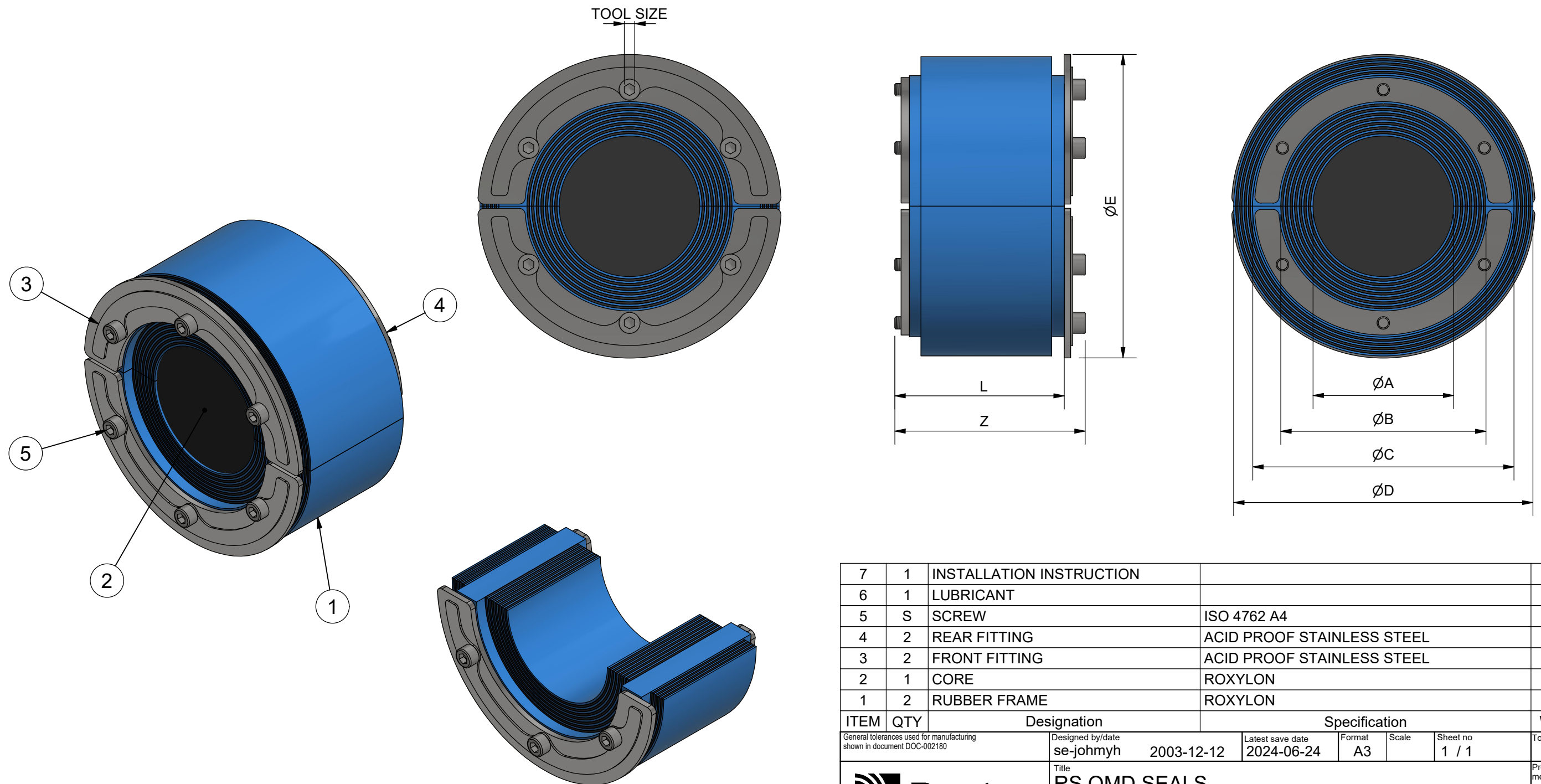


TYPE	A [mm]	B [mm]	C [mm]	D [mm]	E [mm]	L [mm]	Z [mm]	TOOL SIZE [mm]	S [QTY]
RS 25 OMD	3.6	12	26	30	32	38.5	43	2.5	4
RS 31 OMD	4	17	32	35.5	37	38.5	43	2.5	4
RS 43 OMD	4	23	44	51	53	77.5	85	4	4
RS 50 OMD	8	30	51	58	60	77.5	85	4	4
RS 68 OMD	26	48	69	76.5	78	77.5	85	4	4
RS 100 OMD*	48	70	101	108	110	78	85	4	6
RS 125 OMD*	66	98	126	143	145	80	85	5	6
RS 150 OMD WOC	93	119	151	168	170	80	90	5	8



*ALSO AVAILABLE IN WOC VERSION DELIVERED WITHOUT CORE



ITEM	QTY	Designation	Specification	Weight
7	1	INSTALLATION INSTRUCTION		
6	1	LUBRICANT		
5	S	SCREW	ISO 4762 A4	
4	2	REAR FITTING	ACID PROOF STAINLESS STEEL	
3	2	FRONT FITTING	ACID PROOF STAINLESS STEEL	
2	1	CORE	ROXYLON	
1	2	RUBBER FRAME	ROXYLON	

General tolerances used for manufacturing shown in document DOC-002180		Designed by/date se-johmyh 2003-12-12		Latest save date 2024-06-24		Format A3		Scale 1 / 1		Sheet no 1 / 1		TotWeight	
 www.roxtec.com		Title RS OMD SEALS RS OMD 25-150						Projection method 		Drawing number S1005710 Rev E			
		Restricted due to Information drawing											

Rev	Type of revision	Date	Sign
E	LAYOUT CHANGED	2024-06-17	se-marfre