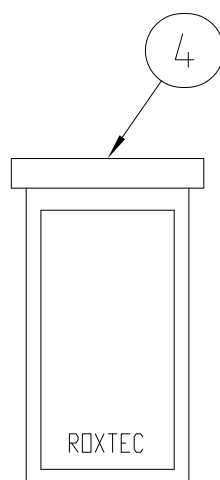
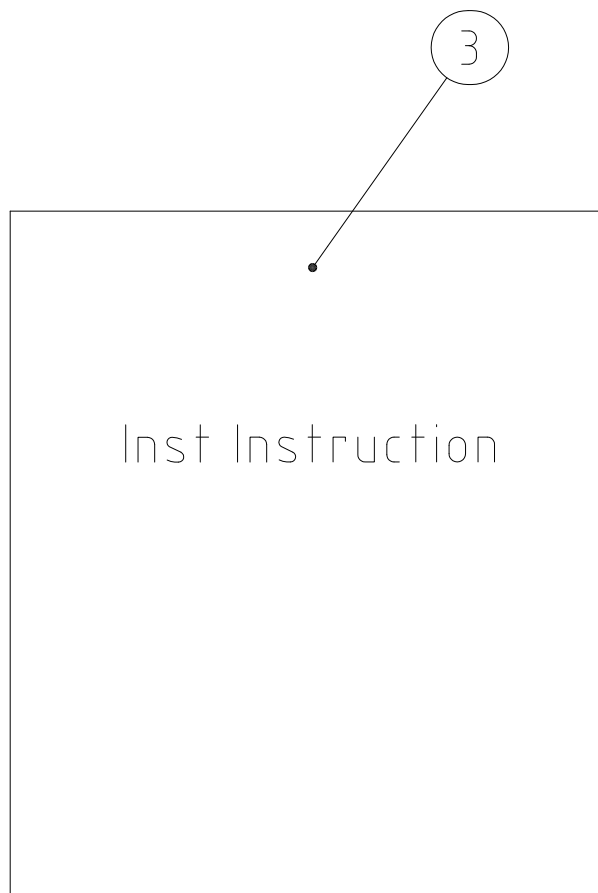
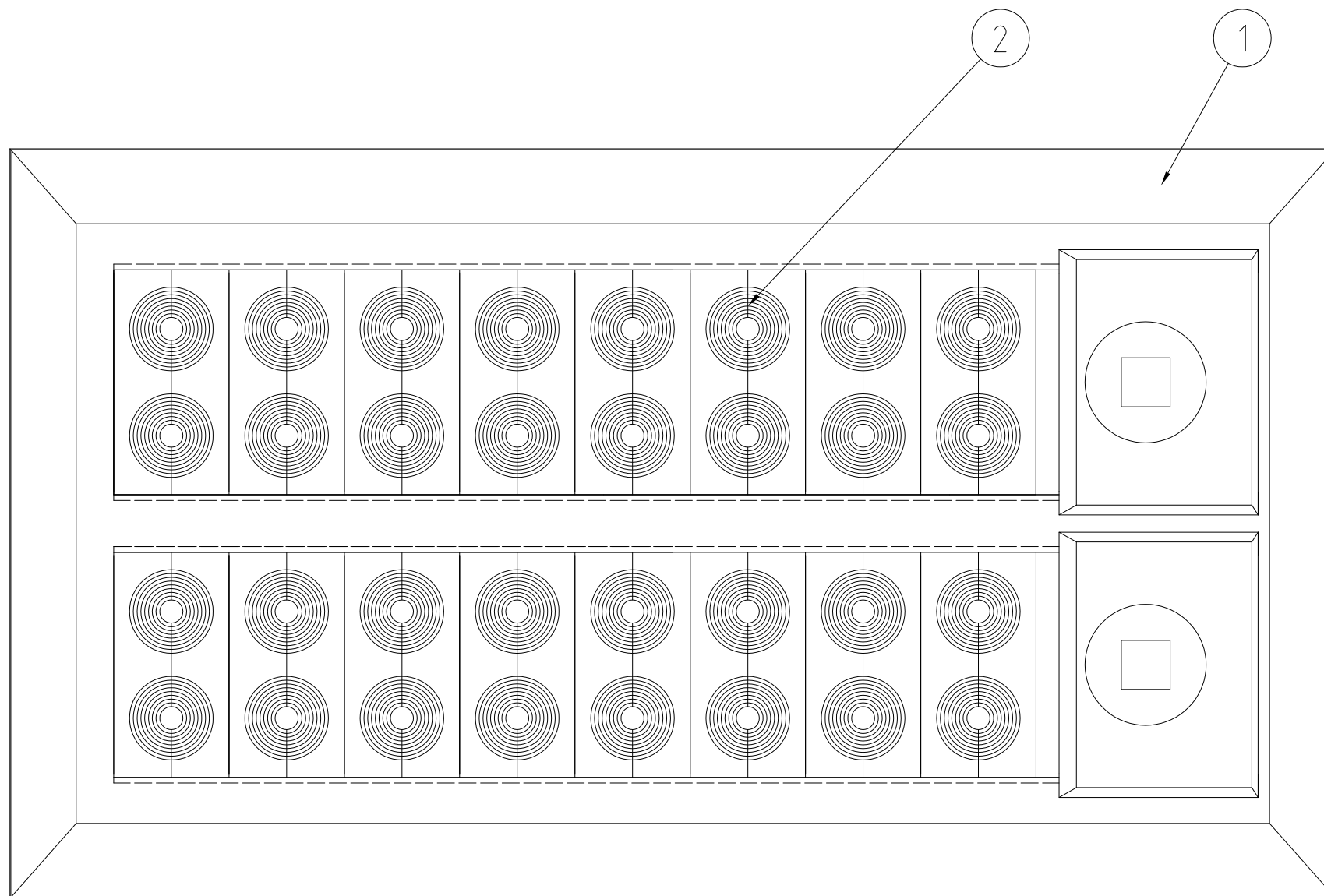

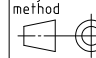


洛克赛克保留所有权利。未经授权严禁复制，
使用以及向第三方泄漏。

All rights reserved. Unauthorized reproduction, use
or disclosure to third parties is strictly forbidden.



4	1	ROXTEC LUBRICANT	25ML	-
3	1	INSTALLATION INSTRUCTION		-
2	16	CM 20W40	0+3.5-16.5MM	-
1	1	CF 32		-

Item	Qty	Designation	Specification			Net Weight	
ROXTEC INTERNATIONAL AB BOX 540 S-371 23 Karlskrona TEL: +46 455 366700 FAX: +46 455 82012		Designed by se-camsve	Created Date 2003-11-26	General tolerance ISO 2768-1/2-m/K EN ISO 13920-BF	Welded details EN ISO 5817-B EN ISO 10042-B	General surface roughness, Ra 12,5 -	Tot Weight
		Approved by se-jorake	Approved Date 2013-04-10	Title CF 32/32		Projection method 	Rev
		Format A3	Scale 1:1	ASSEMBLY KIT		Drawing number S1005655	B
		Restricted due to Information Drawing					

B	INSTALLATION INSTRUCTION AND LUBRICANT ADDED	2013-04-10	se-henols
Rev	Type of revision	Date	Sign