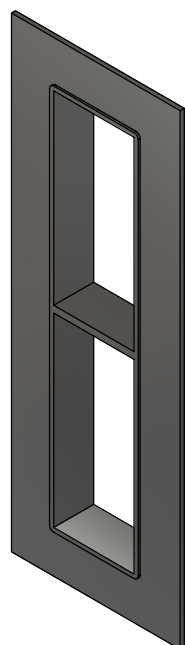


TYPE	ROWS [QTY]	H1 [mm]	H2 FOR +SINGLE FRAMES [mm]	H2 FOR +COMB. FRAMES [mm]
G 2+2xN	2	101	344	346
G 4+4xN	2	159.5	461	463
G 6+6xN	2	218	578	580
G 8+8xN	2	278	698	700
G 2+2+2xN	3	101	455	459
G 4+4+4xN	3	159.5	630.5	634.5
G 6+6+6xN	3	218	806	810
G 8+8+8xN	3	278	986	990
G 2+2+2+2xN	4	101	566	572
G 4+4+4+4xN	4	159.5	800	806
G 6+6+6+6xN	4	218	1034	1040
G 8+8+8+8xN	4	278	1274	1280

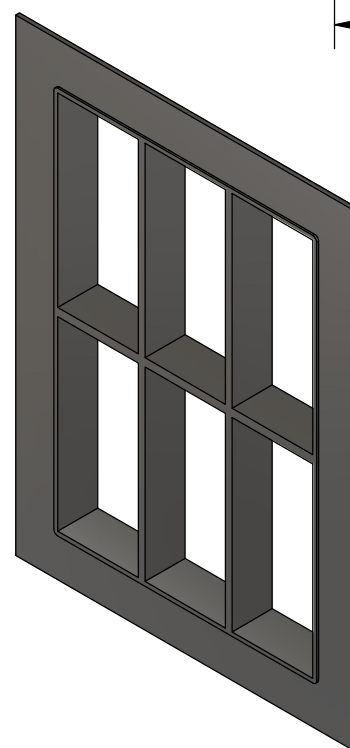
N [QTY]	TYPE	W [mm]	T [mm]
x1	+SINGLE	252.5	10
x2	+COMB.	383	12
x3	+COMB.	513.5	12
x4	+COMB.	644	12
x5	+COMB.	774.5	12
x6	+COMB.	905	12
x7	+COMB.	1035.5	12
x8	+COMB.	1166	12
x9	+COMB.	1296.5	12
x10	+COMB.	1427	12

N: FRAME OPENINGS/ROW

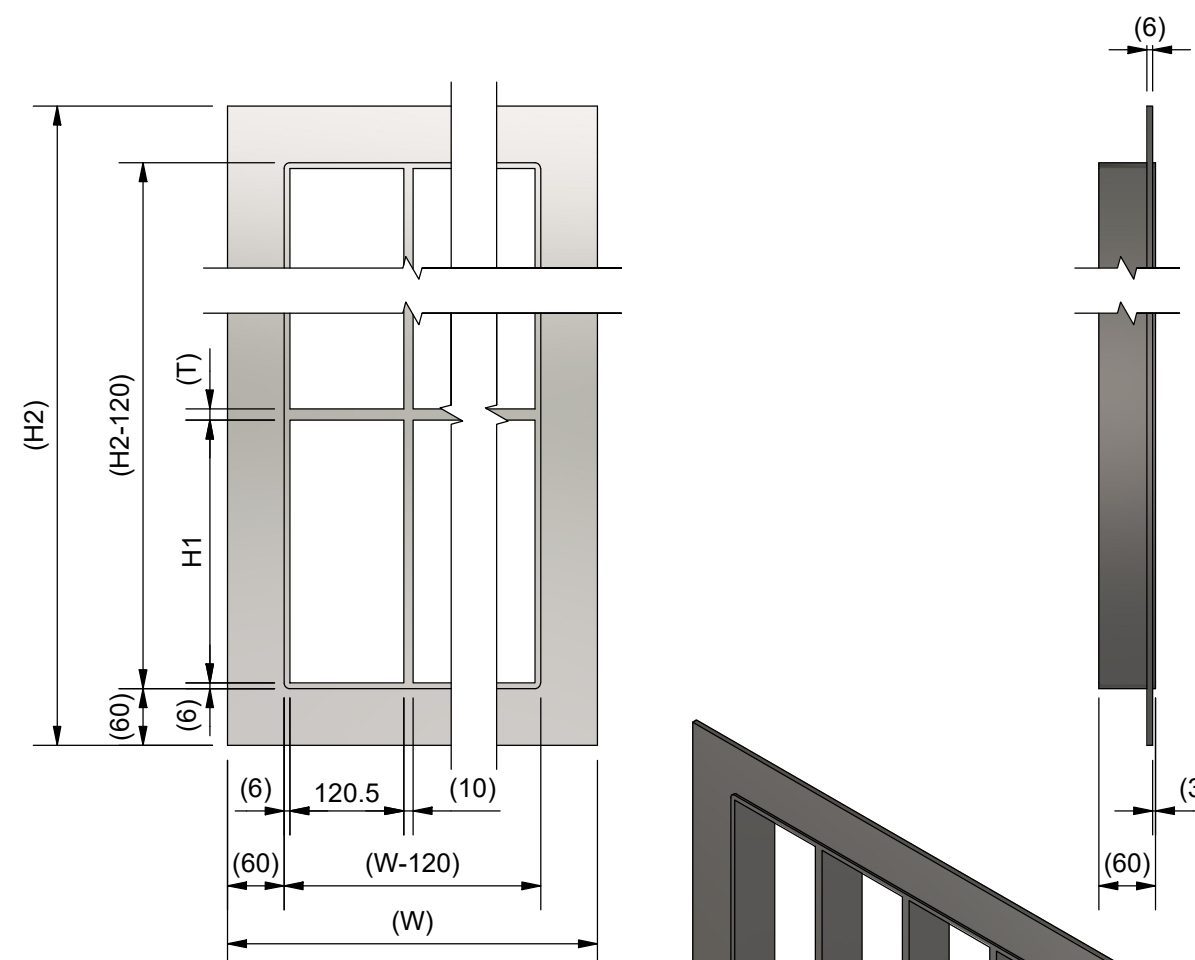
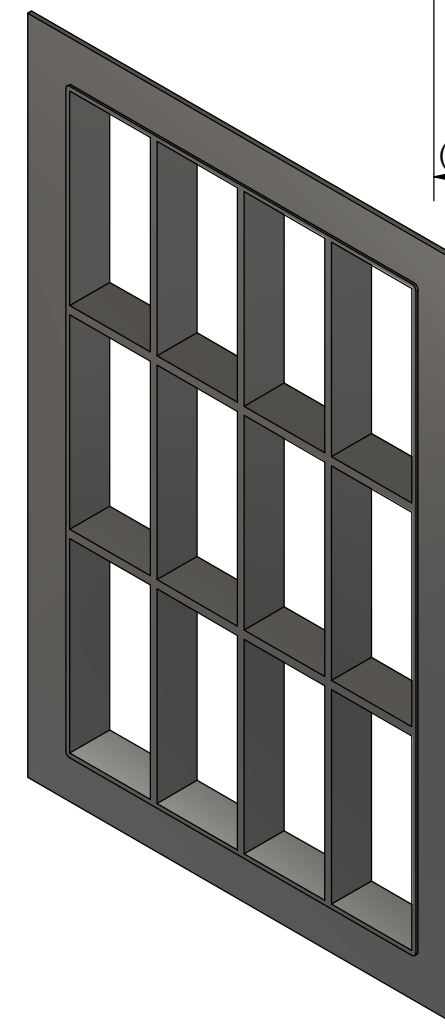
G 8+8x1  
N=1



G 8+8x3  
N=3



G 8+8+8x4  
N=4



L	COLOR UPDATED	2024-11-07	se-marfre
Rev	Type of revision	Date	Sign

General tolerances used for manufacturing shown in document DOC-002180		Designed by/date se-joahel 2003-11-04	Latest save date 2024-11-07	Format A3	Scale	Sheet no 1 / 1	TotWeight
 www.roxtec.com		Title G FRAME +SINGLE AND +COMBINATION FRAME				Projection method 	
		Restricted due to Information drawing			Drawing number S1005558		Rev L